

Sales - House - Mijas

2.495.000€

Mijas

House

Community: 708 EUR / year

IBI: 2,435 EUR / year



4



5



600 m2



2150 m2

Luxury Villa in Valtocado - Panoramic Views Set in the prestigious and tranquil urbanisation of Valtocado, Mijas, this impressive modern villa offers the ultimate blend of privacy, comfort, and spectacular scenery. Just 20 minutes from Málaga Airport, 15 minutes from Fuengirola, and only 5 minutes from the charming whitewashed village of Mijas Pueblo, the location is as convenient as it is serene. Perched to capture both the Mediterranean Sea and Ronda mountains, this south-facing property enjoys some of the most breathtaking panoramic views on the Costa del Sol. The villa features underfloor heating, hot and cold A/C, tempered glass windows throughout, and solar panels for both water and underfloor heating. There are two lifts: one from the entrance to the garage, and another to the rooftop terrace with jacuzzi. Outdoors, you'll find an infinity pool, children's pool, extensive terraces, and a large outdoor kitchen. On the ground floor, a grand entrance hall with guest WC leads into a vast open-plan dining and living area. To one side is a fully fitted modern kitchen with high-end appliances including two ovens, two fridges, two freezers, induction cookers, dishwasher, microwave, and a special tap for filtered drinking water, with direct garden access. On the other side, patio doors open to a large terrace with glass curtains, perfect for enjoying sunrise and sunset year-round. The elegant living room features coloured LED ceiling lighting, direct terrace access, and a lift to the rooftop jacuzzi. The master suite on this floor boasts a wraparound terrace, a luxurious walk-in closet with central island, and an en-suite bathroom with balcony—ideal for soaking in a hot bath while watching the sun set over the Andalusian hills. The lower level, accessible by stairs or lift, includes a second spacious living area with rustic bar, wine shelving, and billiard table, two generous en-suite bedrooms with garden and pool access (one with Turkish bath), a guest WC, large laundry room with kitchenette and storage, and a cinema room with surround sound and theatre seating. A completely independent guest annex offers a bright kitchen, living room, spacious bedroom, bathroom, and an additional utility room for electrics and water systems. The property is surrounded by a wraparound garden with multiple terraces, a saltwater infinity pool plus a children's pool, and a two-car garage. An eco-friendly septic tank recycles water for irrigation. This villa combines modern luxury, energy efficiency, and unbeatable panoramic views, all in a prime Costa del Sol location.

Setting

- ✓ Suburban
- ✓ Country
- ✓ Mountain Pueblo
- ✓ Close To Shops
- ✓ Close To Schools
- ✓ Close To Forest
- ✓ Urbanisation

Climate Control

- ✓ Air Conditioning
- ✓ Hot A/C
- ✓ Cold A/C
- ✓ Central Heating
- ✓ U/F Heating
- ✓ U/F/H Bathrooms

Kitchen

- ✓ Fully Fitted

Utilities

- ✓ Electricity
- ✓ Drinkable Water
- ✓ Telephone
- ✓ Photovoltaic solar panels
- ✓ Solar water heating

Orientation

- ✓ South

Views

- ✓ Sea
- ✓ Mountain
- ✓ Country
- ✓ Panoramic
- ✓ Garden
- ✓ Pool
- ✓ Urban
- ✓ Forest

Garden

- ✓ Private
- ✓ Landscaped
- ✓ Easy Maintenance

Category

- ✓ Luxury
- ✓ Resale
- ✓ Contemporary

Condition

- ✓ Excellent
- ✓ Good
- ✓ New Construction

Features

- ✓ Covered Terrace
- ✓ Lift
- ✓ Fitted Wardrobes
- ✓ Private Terrace
- ✓ Satellite TV
- ✓ WiFi
- ✓ Sauna
- ✓ Games Room
- ✓ Guest Apartment
- ✓ Guest House
- ✓ Storage Room
- ✓ Utility Room
- ✓ Ensuite Bathroom
- ✓ Access for people with reduced mobility
- ✓ Marble Flooring
- ✓ Jacuzzi
- ✓ Bar
- ✓ Barbeque
- ✓ Double Glazing
- ✓ Basement

Security

- ✓ Alarm System
- ✓ Safe

Pool

- ✓ Private
- ✓ Children`s Pool

Furniture

- ✓ Optional

Parking

- ✓ Garage
- ✓ Covered
- ✓ More Than One
- ✓ Private







































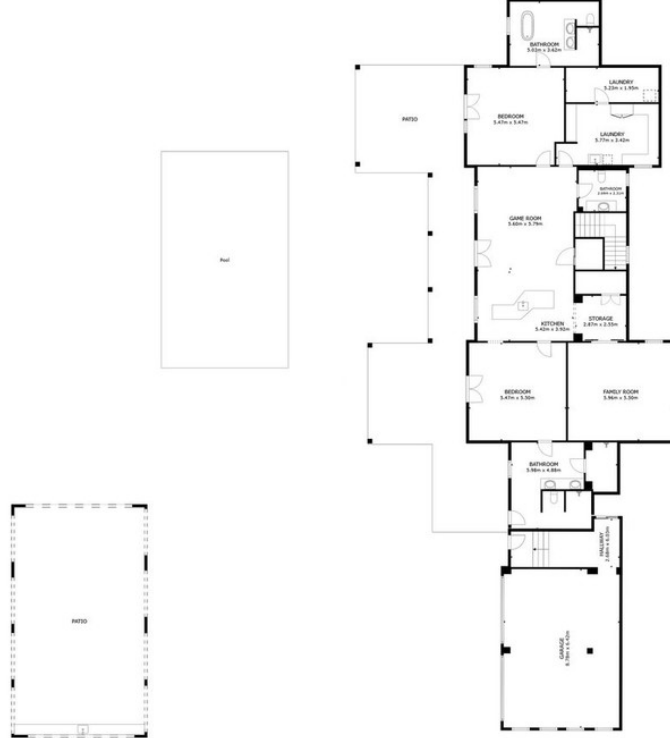












FLOOR 1

GROSS INTERNAL AREA
 FLOOR 1 252.0 m² FLOOR 2 244.0 m² FLOOR 3 20.0 m²
 EXCLUDED AREAS : PATIO 115.5 m² PATIO 94.2 m² BALCONY 52.2 m² BALCONY 31.0 m²
 VERANDA 33.5 m² BALCONY 77.6 m²
 TOTAL : 516.0 m²
 SIZES AND DIMENSIONS ARE APPROXIMATE, ACTUAL MAY VARY.



FLOOR 2

GROSS INTERNAL AREA
 FLOOR 1 252.0 m² FLOOR 2 244.0 m² FLOOR 3 20.0 m²
 EXCLUDED AREAS : PATIO 115.5 m² PATIO 94.2 m² BALCONY 52.2 m² BALCONY 31.0 m²
 VERANDA 33.5 m² BALCONY 77.6 m²
 TOTAL : 516.0 m²
 SIZES AND DIMENSIONS ARE APPROXIMATE, ACTUAL MAY VARY.



FLOOR 3

GROSS INTERNAL AREA
 FLOOR 1 252.0 m² FLOOR 2 244.0 m² FLOOR 3 20.0 m²
 EXCLUDED AREAS : PATIO 115.5 m² PATIO 94.2 m² BALCONY 52.2 m² BALCONY 31.0 m²
 VERANDA 33.5 m² BALCONY 77.6 m²
 TOTAL : 516.0 m²
 SIZES AND DIMENSIONS ARE APPROXIMATE, ACTUAL MAY VARY.



FLOOR 1

FLOOR 2

FLOOR 3

GROSS INTERNAL AREA
 FLOOR 1 252.0 m² FLOOR 2 244.0 m² FLOOR 3 20.0 m²
 EXCLUDED AREAS : PATIO 115.5 m² PATIO 94.2 m² BALCONY 52.2 m² BALCONY 31.0 m² GARAGE 70m²
 VERANDA 33.5 m² BALCONY 77.6 m²
 TOTAL : 516.0 m²
 SIZES AND DIMENSIONS ARE APPROXIMATE, ACTUAL MAY VARY.

