

Sales - Apartment - Calahonda

302.000€

Calahonda

Apartment

Community: 1,260 EUR / year IBI: 386 EUR / year

Rubbish: 134 EUR / year



2



2



90 m2

This stunning and impeccably maintained apartment is perched in the upper part of Calahonda and boasts the most spectacular panoramic sea views in the entire development. It features two spacious bedrooms, two bathrooms (one en-suite), rustic-style ceramic flooring, a jacuzzi in the master bathroom, and a fully renovated and equipped kitchen with high-quality finishes. The property also includes a generous covered terrace, a laundry room, and a private rear patio. Everything is in perfect condition and ready to move into. The southeast-facing terrace is ideal for enjoying the morning sun and dining al fresco in the afternoon. From here, you'll enjoy sweeping views of the Mediterranean Sea, Gibraltar, and even the coast of Africa. The southwest-facing rear patio offers maximum privacy and sunshine from the afternoon until sunset – perfect for sunbathing in peace. Sold fully furnished and includes a private parking space. The gated community offers excellent security and features three stunning communal swimming pools with sea views and beautifully landscaped gardens. Located just a 7-minute drive from the beach and shopping areas of the urbanisation. An ideal apartment for those seeking peace and tranquillity in a lush green setting, with absolutely unbeatable sea views!

Setting

- ✓ Town
- ✓ Close To Golf
- ✓ Close To Town
- ✓ Urbanisation

Climate Control

- ✓ Air Conditioning
- ✓ Hot A/C

Garden

- ✓ Communal

Category

- ✓ Resale

Orientation

- ✓ South West

Views

- ✓ Sea
- ✓ Panoramic

Security

- ✓ Gated Complex
- ✓ Entry Phone
- ✓ Alarm System

Condition

- ✓ Excellent

Features

- ✓ Covered Terrace
- ✓ Fitted Wardrobes
- ✓ Private Terrace
- ✓ WiFi
- ✓ Utility Room
- ✓ Ensuite Bathroom
- ✓ Double Glazing

Parking

- ✓ Private

Pool

- ✓ Communal

Furniture

- ✓ Optional

Utilities

- ✓ Electricity
- ✓ Drinkable Water



















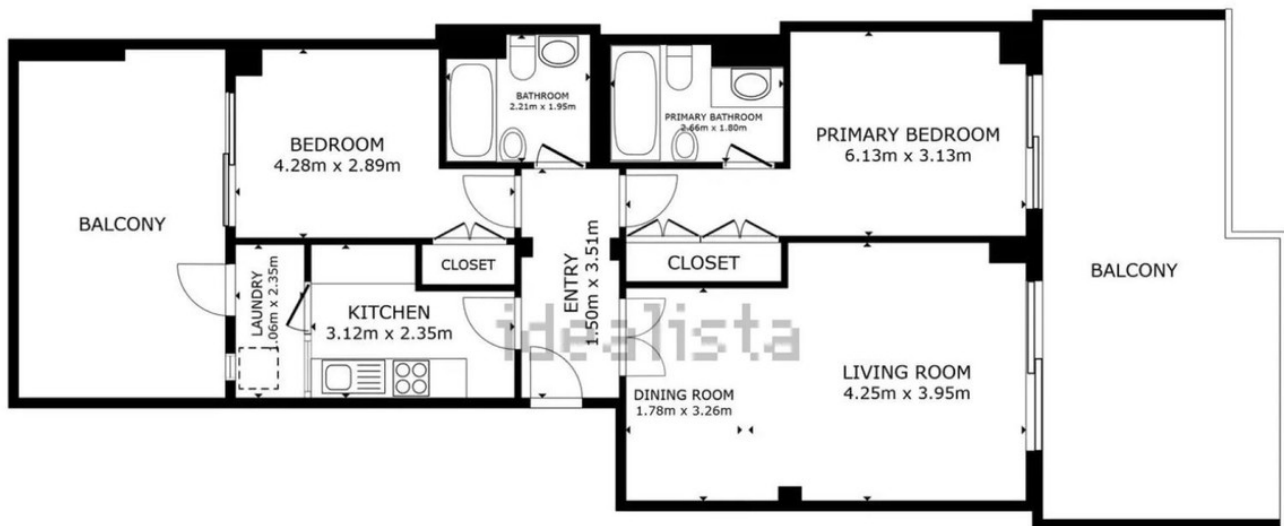












FLOOR PLAN

GROSS INTERNAL AREA
 FLOOR PLAN 76.0 m²
 EXCLUDED AREAS : BALCONY 25.0 m² BALCONY 16.9 m²
 TOTAL : 76.0 m²
 SIZES AND DIMENSIONS ARE APPROXIMATE, ACTUAL MAY VARY.