

Sales - Apartment - Calahonda

475.000€

Calahonda

Apartment

Community: 2,316 EUR / year IBI: 550 EUR / year

Rubbish: 78 EUR / year



2



2



75 m2

SEA VIEWS!! LOCATION!! The spacious apartment to reform with 2-bedroom, 2-bathroom (one en suite) is located in an exclusive frontline beach complex in Calahonda. Situated on the third floor with lift access, it boasts a privileged front-facing position, offering spectacular sea views from both bedrooms, the spacious living-dining room, and, of course, from the large private terrace — a true balcony over the Mediterranean. The complex, Mansion Alhamar, was originally a luxury hotel in the 1980s and still retains its charm and prestige. It offers a wide range of amenities: • Beautiful communal gardens with waterfalls • Swimming pools for adults and children • Tennis and paddle courts • Gym • Games room • Private café and beachside restaurant • Grand communal lobby with fireplace for guests • Secure gated communal parking All this just steps from shopping centres, supermarkets, shops, medical centres, public transport, and all necessary services. An ideal property for luxurious beachfront holidays or year-round living by the sea. Location, views, and comfort — a rare find!

Setting

- ✓ Beachfront
- ✓ Town
- ✓ Beachside
- ✓ Close To Golf
- ✓ Close To Port
- ✓ Close To Shops
- ✓ Close To Sea
- ✓ Close To Town
- ✓ Urbanisation
- ✓ Front Line Beach Complex

Orientation

- ✓ South

Condition

- ✓ Renovation Required

Pool

- ✓ Communal

Views

- ✓ Sea
- ✓ Beach
- ✓ Panoramic

Features

- ✓ Lift
- ✓ Fitted Wardrobes
- ✓ Near Transport
- ✓ Paddle Tennis
- ✓ Tennis Court
- ✓ Ensuite Bathroom
- ✓ Bar
- ✓ 24 Hour Reception
- ✓ Restaurant On Site
- ✓ Near Church

Furniture

- ✓ Not Furnished

Kitchen

- ✓ Fully Fitted

Garden

- ✓ Communal

Security

- ✓ Gated Complex
- ✓ 24 Hour Security

Parking

- ✓ Communal

Utilities

- ✓ Electricity
- ✓ Drinkable Water
- ✓ Gas

Category

- ✓ Beachfront
- ✓ Resale







































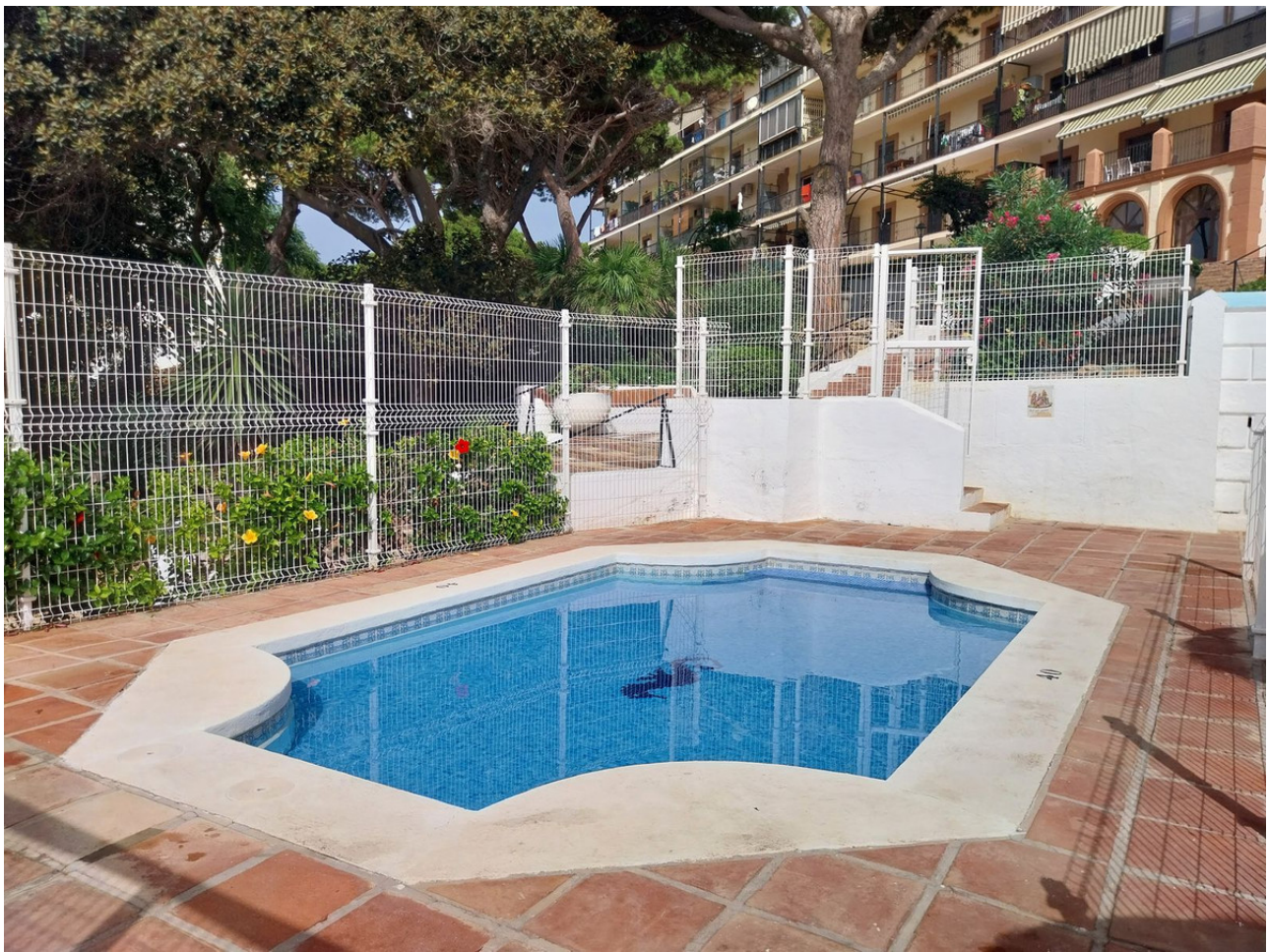


















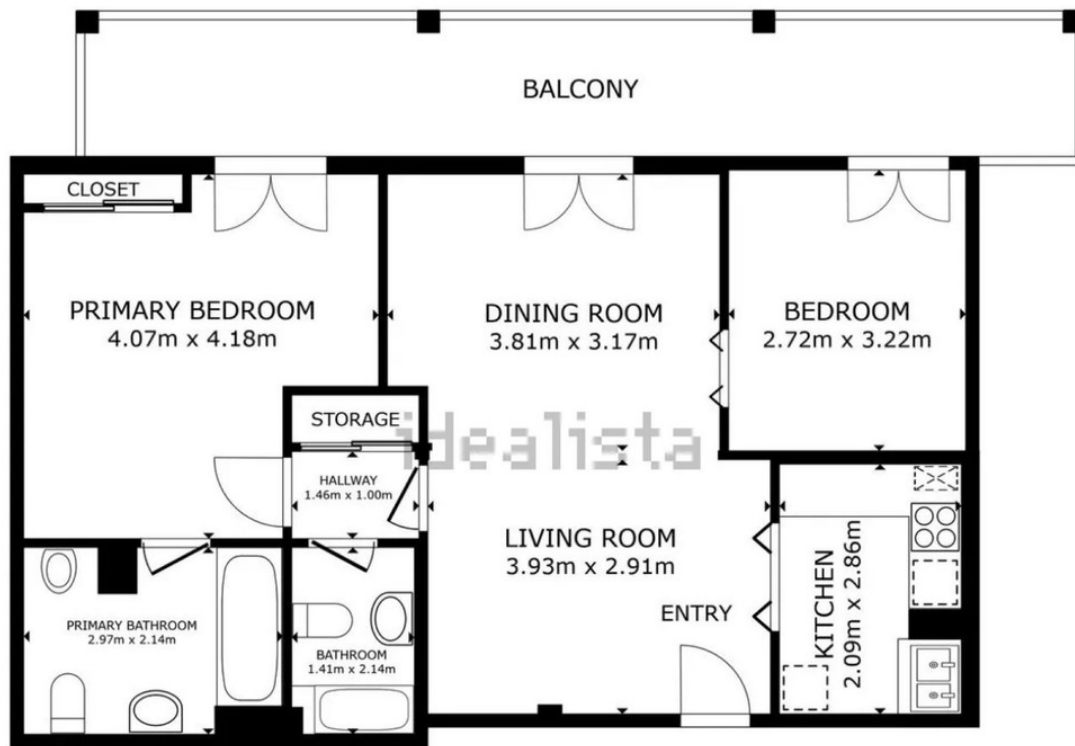












FLOOR PLAN

GROSS INTERNAL AREA
 FLOOR PLAN 67.8 m²
 EXCLUDED AREAS : BALCONY 17.8 m²
 TOTAL : 67.8 m²
 SIZES AND DIMENSIONS ARE APPROXIMATE, ACTUAL MAY VARY.