

**Sales - House - El Faro**

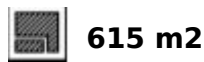
**3.675.000€**



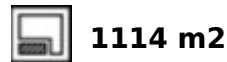
5



6.5



615 m2



1114 m2

Wonderful, ultra-modern, newly built villa in the El Faro residential area, Mijas Costa, just 200 metres from the beach. Unparalleled luxury in the area. Spacious, bright, with uninterrupted sea views and plenty of privacy to delight even the most demanding client. The property consists of three levels connected by stairs and a lift, distributed as follows: main floor with large living-dining room opening onto a large terrace, gardens and swimming pool, as well as a barbecue area. Fully equipped kitchen with separate utility room, a guest toilet and two en-suite bedrooms, perfect for guests. First floor with two large en-suite bedrooms, study and another full bathroom. In addition, a terrace of over 100 m<sup>2</sup> with spectacular sea and mountain views. Finally, the large basement of over 250 m<sup>2</sup> houses a spacious car park for several vehicles, a machinery room and a huge area that could be used to create a guest apartment, cinema, wine cellar, games room or whatever the new owner desires.

**Setting**

- ✓ Beachside
- ✓ Close To Golf
- ✓ Close To Shops
- ✓ Close To Sea
- ✓ Close To Town
- ✓ Urbanisation

**Climate Control**

- ✓ Air Conditioning
- ✓ Hot A/C
- ✓ Cold A/C

**Kitchen**

- ✓ Fully Fitted

**Utilities**

- ✓ Electricity
- ✓ Drinkable Water
- ✓ Telephone

**Orientation**

- ✓ South

**Views**

- ✓ Sea
- ✓ Panoramic
- ✓ Garden
- ✓ Pool

**Garden**

- ✓ Private
- ✓ Easy Maintenance

**Category**

- ✓ Bargain
- ✓ Beachfront
- ✓ Golf
- ✓ Holiday Homes
- ✓ Investment
- ✓ Luxury
- ✓ Contemporary

**Condition**

- ✓ Excellent
- ✓ New Construction

**Features**

- ✓ Covered Terrace
- ✓ Lift
- ✓ Fitted Wardrobes
- ✓ Near Transport
- ✓ Private Terrace
- ✓ Solarium
- ✓ Satellite TV
- ✓ WiFi
- ✓ Storage Room
- ✓ Utility Room
- ✓ Ensuite Bathroom
- ✓ Access for people with reduced mobility
- ✓ Barbeque
- ✓ Double Glazing
- ✓ Domotics
- ✓ Basement
- ✓ Fiber Optic

**Security**

- ✓ Gated Complex
- ✓ Entry Phone
- ✓ Alarm System

**Pool**

- ✓ Private

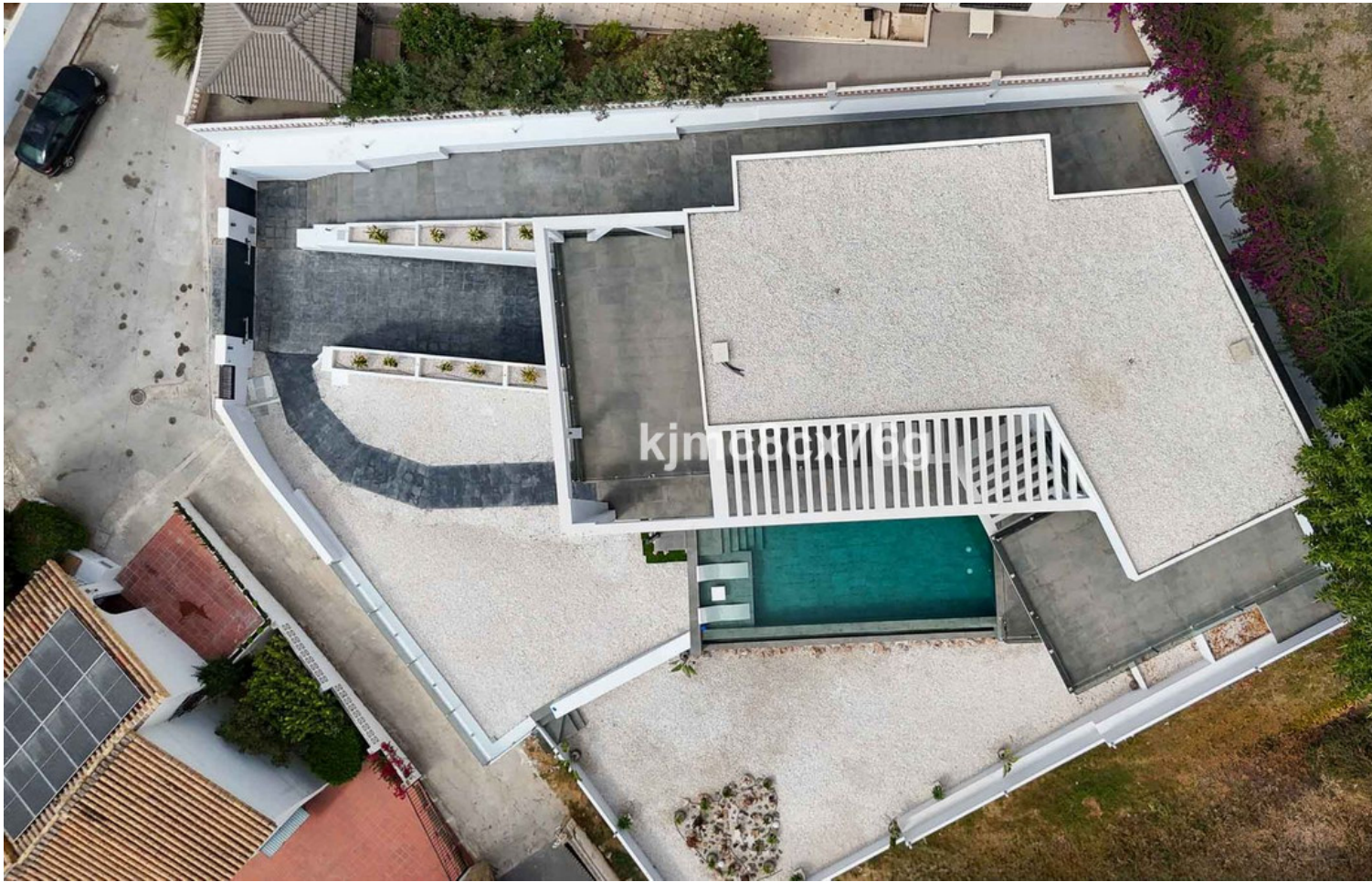
**Furniture**

- ✓ Not Furnished

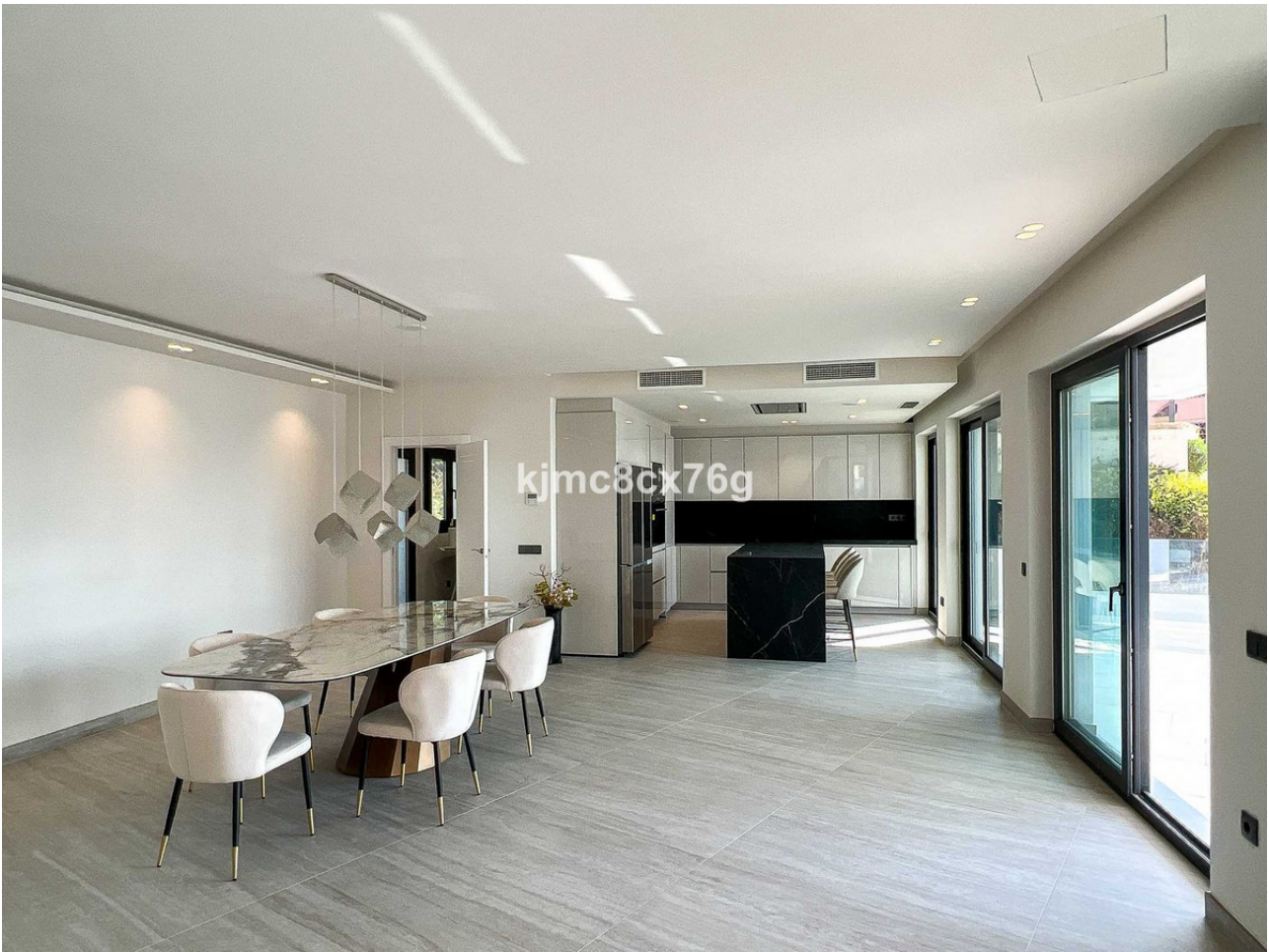
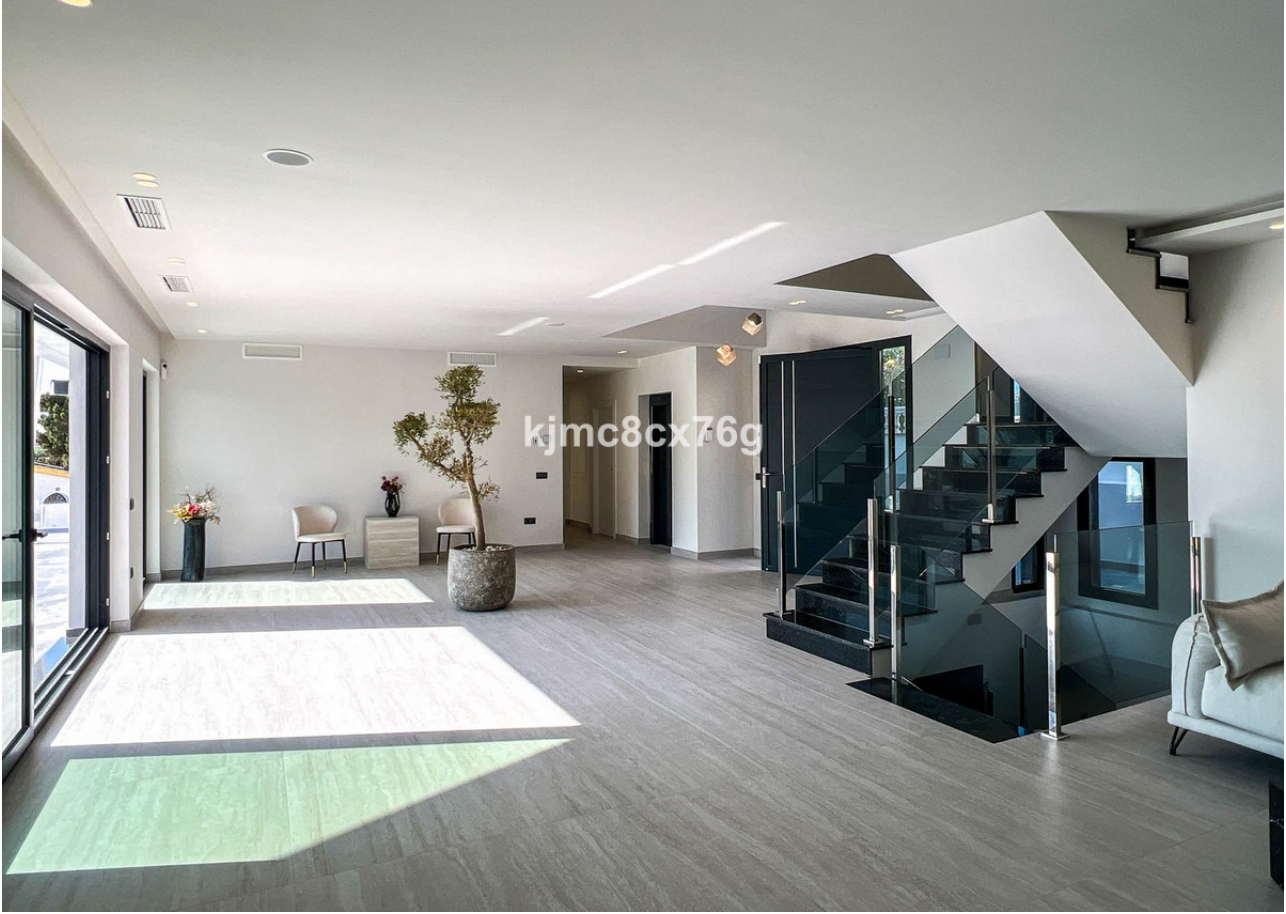
**Parking**

- ✓ Garage
- ✓ Covered
- ✓ More Than One

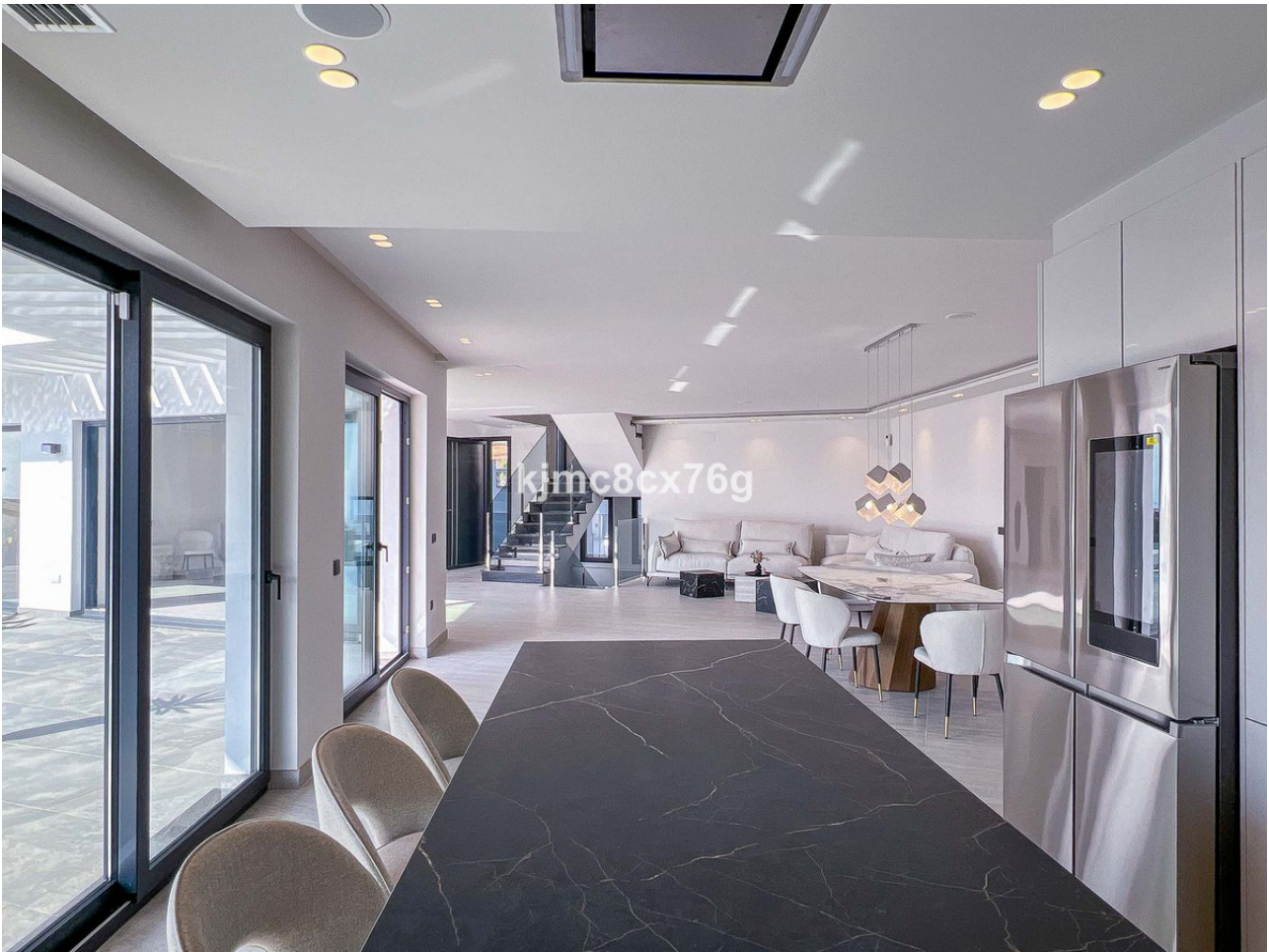




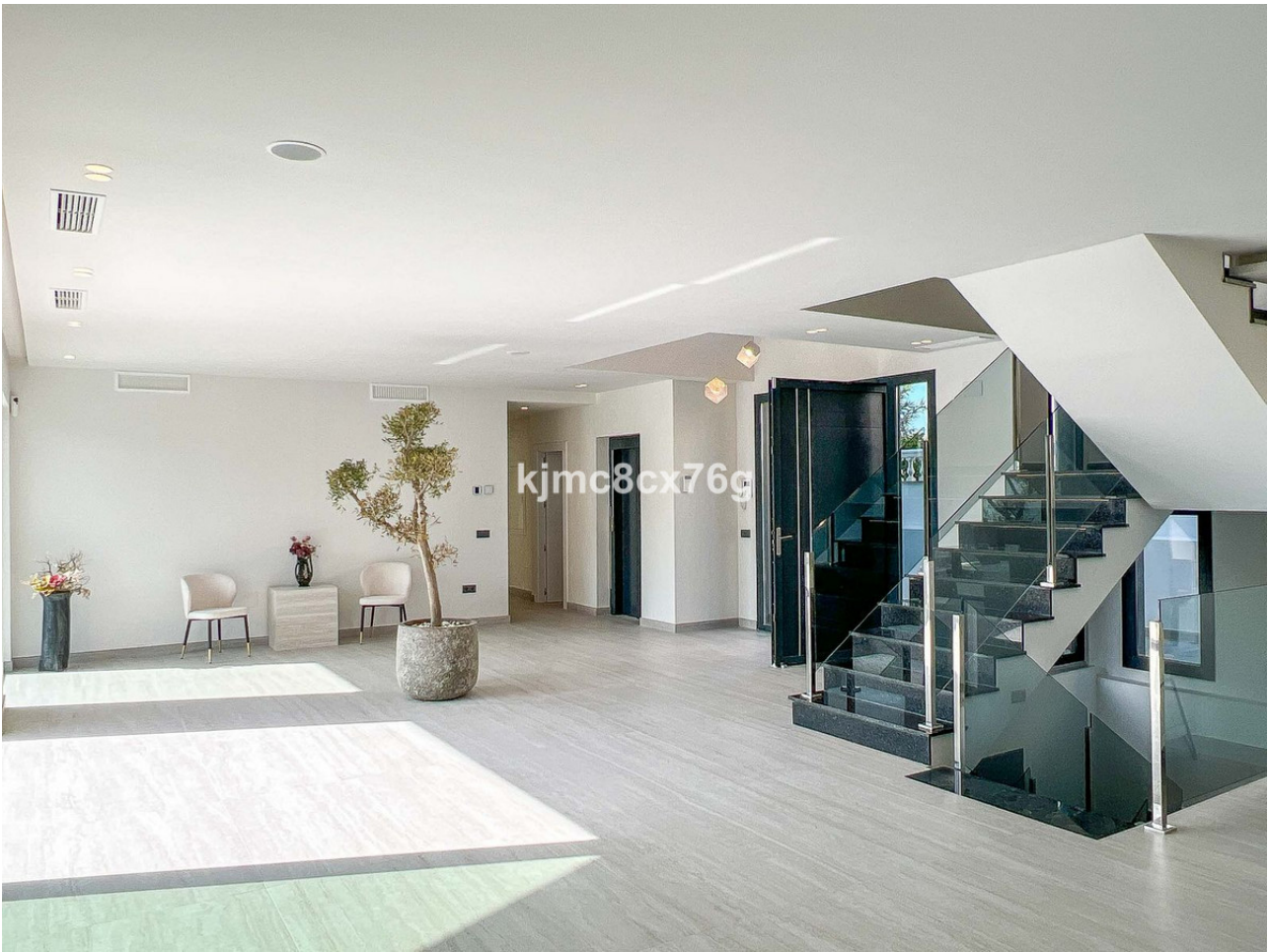


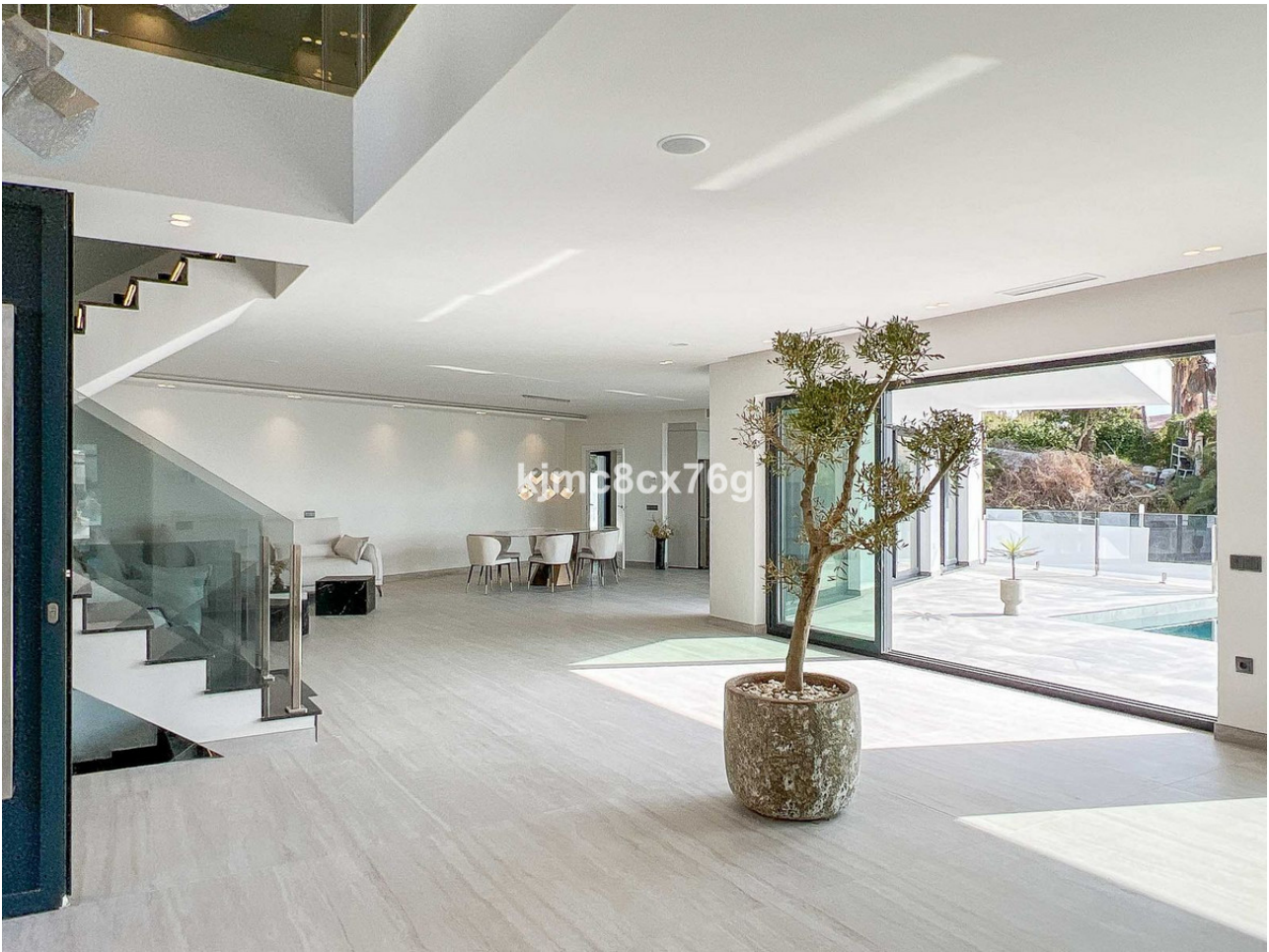








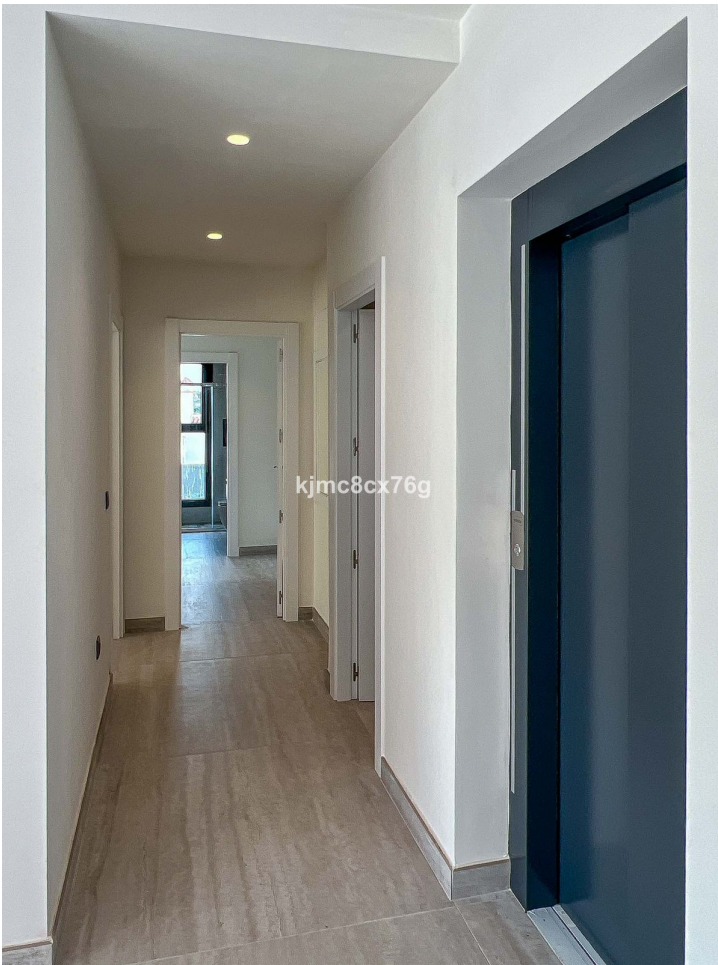


















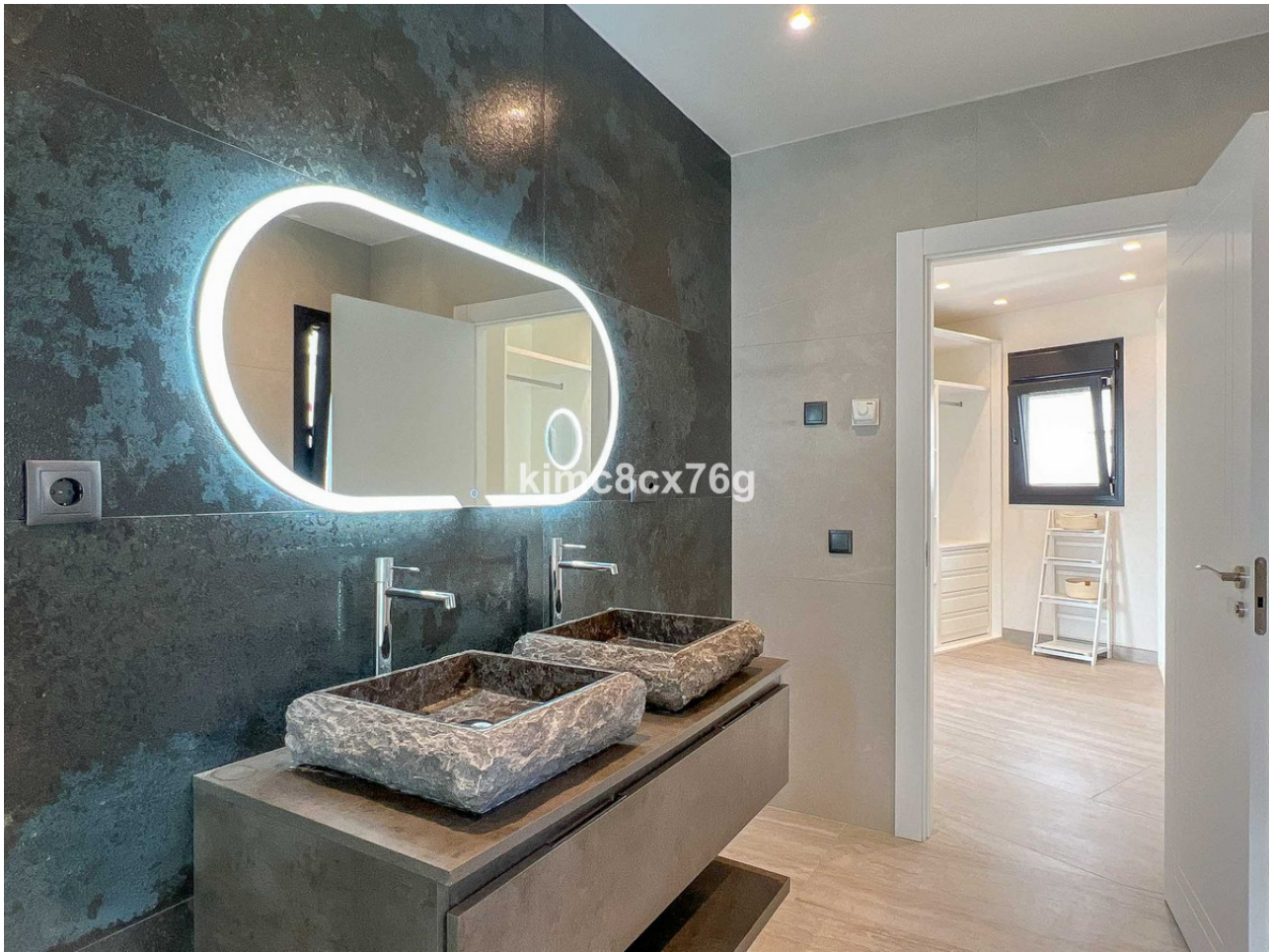








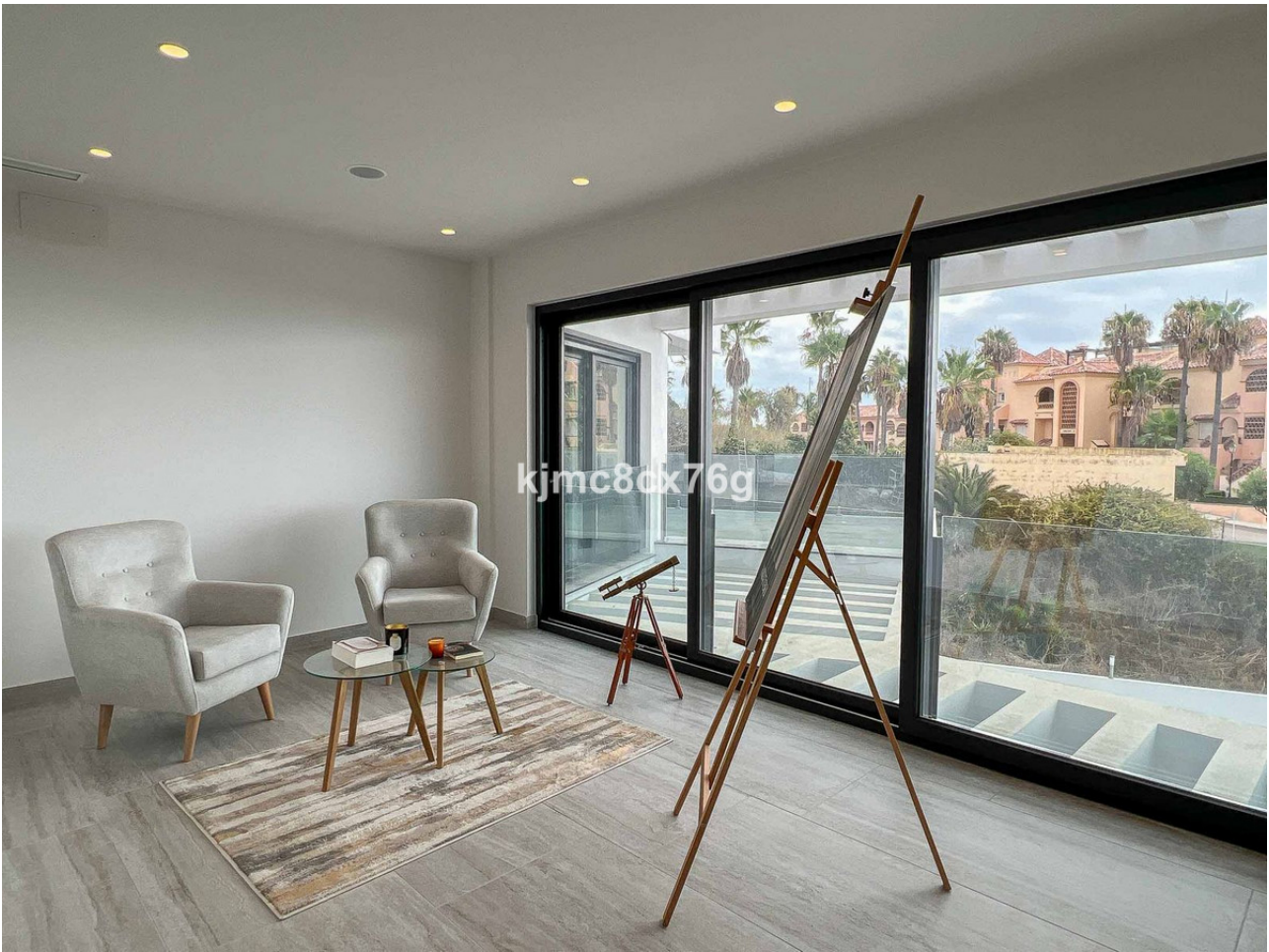










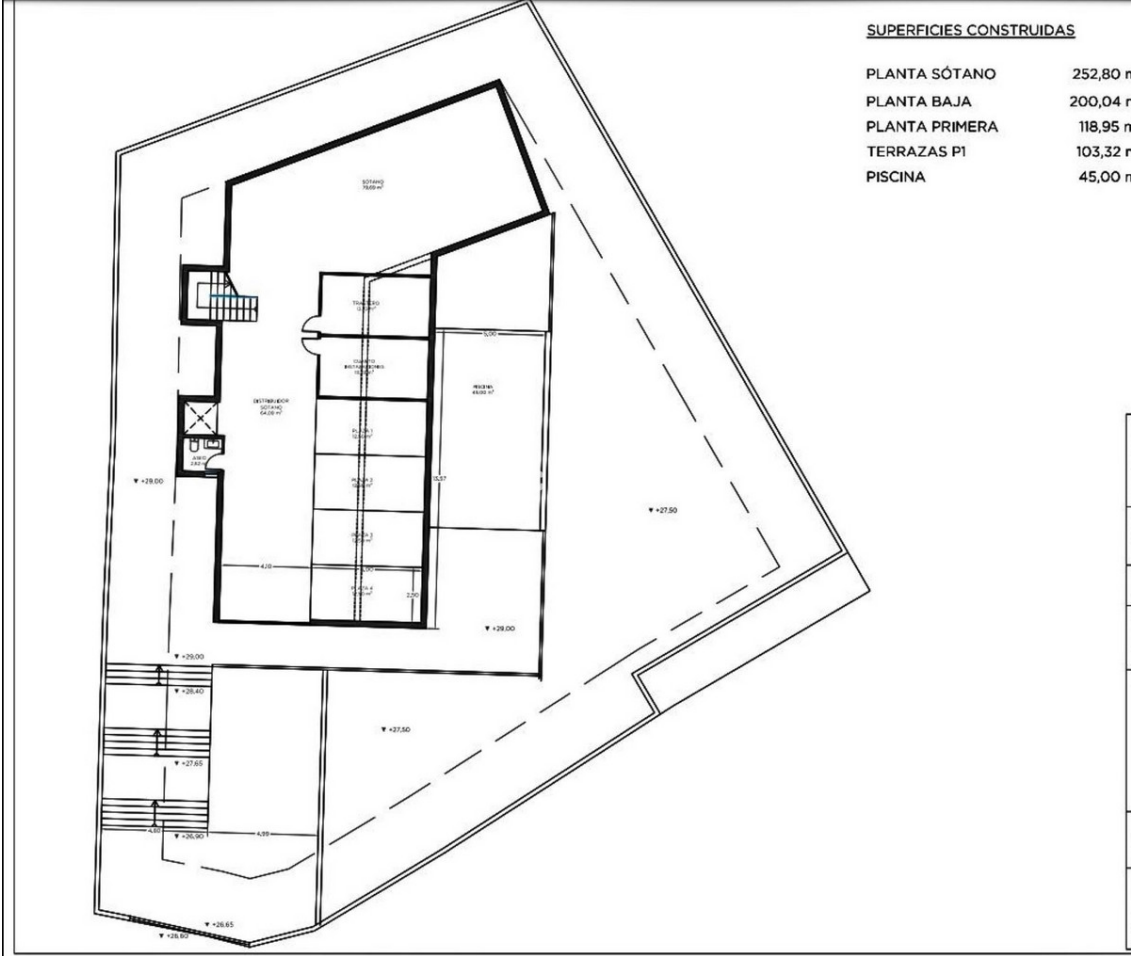


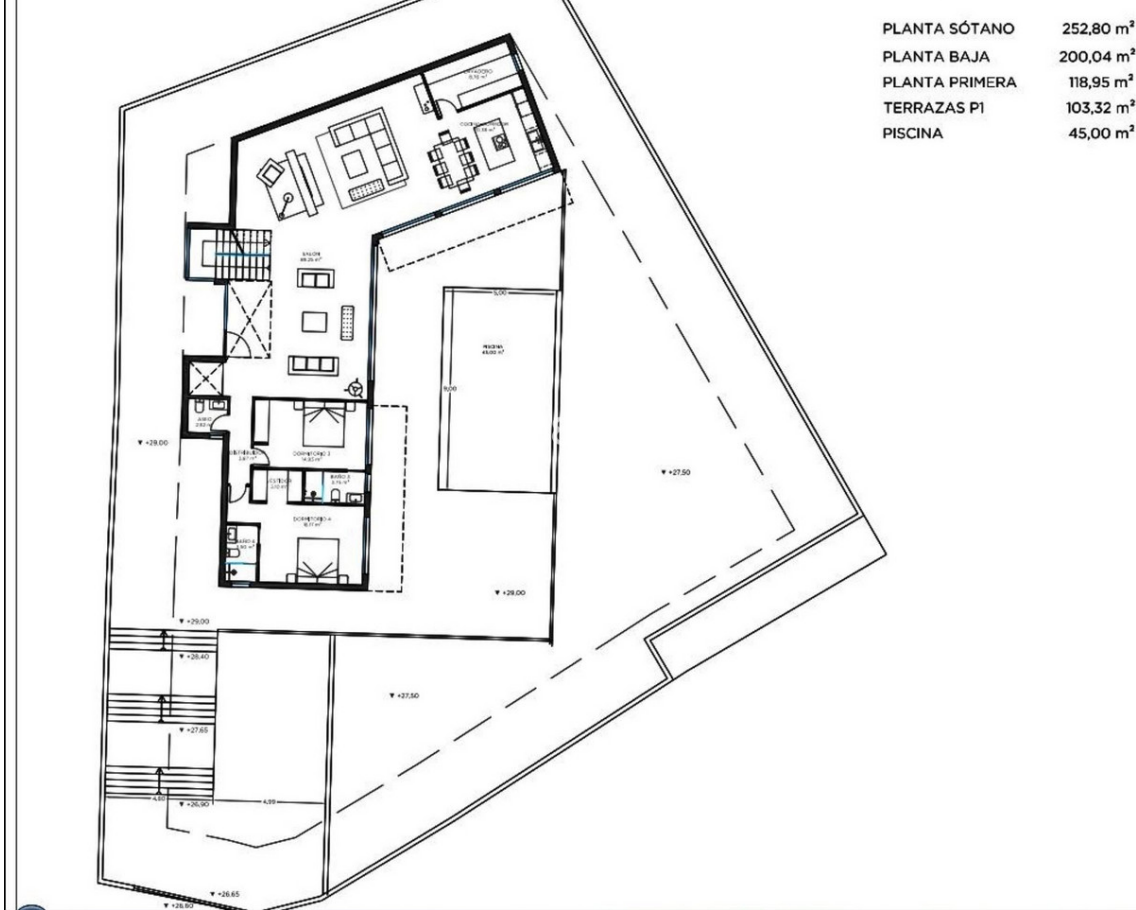




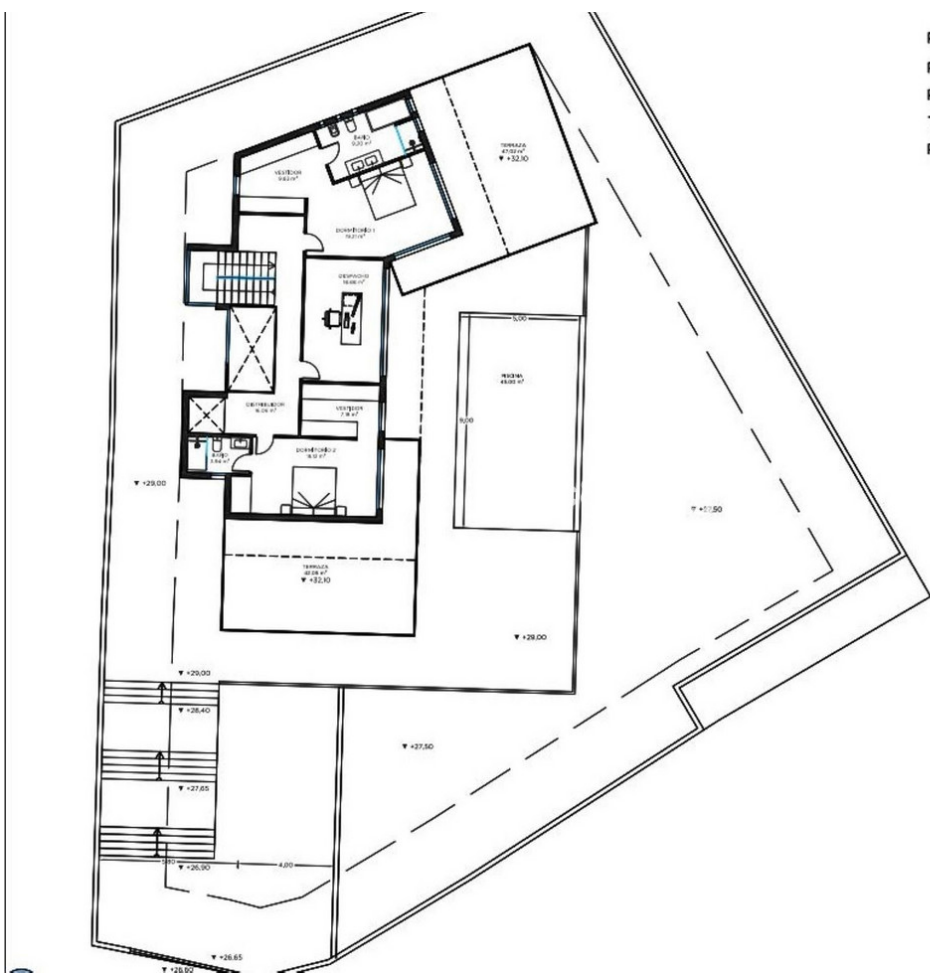








PLANTA SÓTANO	252,80 m <sup>2</sup>
PLANTA BAJA	200,04 m <sup>2</sup>
PLANTA PRIMERA	118,95 m <sup>2</sup>
TERRAZAS P1	103,32 m <sup>2</sup>
PISCINA	45,00 m <sup>2</sup>



PLANTA SÓTANO	252,80 m <sup>2</sup>
PLANTA BAJA	200,04 m <sup>2</sup>
PLANTA PRIMERA	118,95 m <sup>2</sup>
TERRAZAS P1	103,32 m <sup>2</sup>
PISCINA	45,00 m <sup>2</sup>