

Sales - Apartment - Fuengirola

949.000€

Fuengirola

Apartment



3



2



114 m2

Discover a unique 3-bedroom middle floor at the corner of the building, where no one lives above you—offering privacy, light, and a peaceful ambiance rarely matched. The living room flows directly into the main bedroom through a sliding glass wall, allowing you to open up the space fully when you choose or close it for intimacy. With an extended living area that stretches to a side terrace framed in full-height glass, you'll enjoy sweeping Mediterranean views from multiple perspectives. Throughout, rich wooden floors are complemented by real wood accents along the walls and ceilings, adding warmth, texture and natural character to every room. Step outside and sink into your private jacuzzi under the stars in your own outdoor sanctuary. This home combines architectural elegance with resort-level living, all wrapped in a layout that feels expansive, airy, and absolutely exceptional.

Setting

- ✓ Close To Shops
- ✓ Close To Sea
- ✓ Close To Town
- ✓ Close To Forest
- ✓ Close To Marina
- ✓ Urbanisation

Climate Control

- ✓ Air Conditioning
- ✓ U/F Heating

Kitchen

- ✓ Fully Fitted

Utilities

- ✓ Electricity
- ✓ Drinkable Water
- ✓ Photovoltaic solar panels

Orientation

- ✓ East
- ✓ South East
- ✓ South
- ✓ South West

Views

- ✓ Sea
- ✓ Mountain
- ✓ Panoramic
- ✓ Garden
- ✓ Pool

Garden

- ✓ Communal

Category

- ✓ Luxury
- ✓ Resale
- ✓ Contemporary

Condition

- ✓ Excellent

Features

- ✓ Covered Terrace
- ✓ Lift
- ✓ Near Transport
- ✓ Private Terrace
- ✓ WiFi
- ✓ Gym
- ✓ Sauna
- ✓ Paddle Tennis
- ✓ Tennis Court
- ✓ Storage Room
- ✓ Utility Room
- ✓ Wood Flooring
- ✓ Jacuzzi
- ✓ Domotics
- ✓ Courtesy Bus

Security

- ✓ Gated Complex
- ✓ Entry Phone
- ✓ Alarm System
- ✓ 24 Hour Security

Pool

- ✓ Communal
- ✓ Private

Furniture

- ✓ Not Furnished

Parking

- ✓ Underground
- ✓ More Than One
- ✓ EV charge point











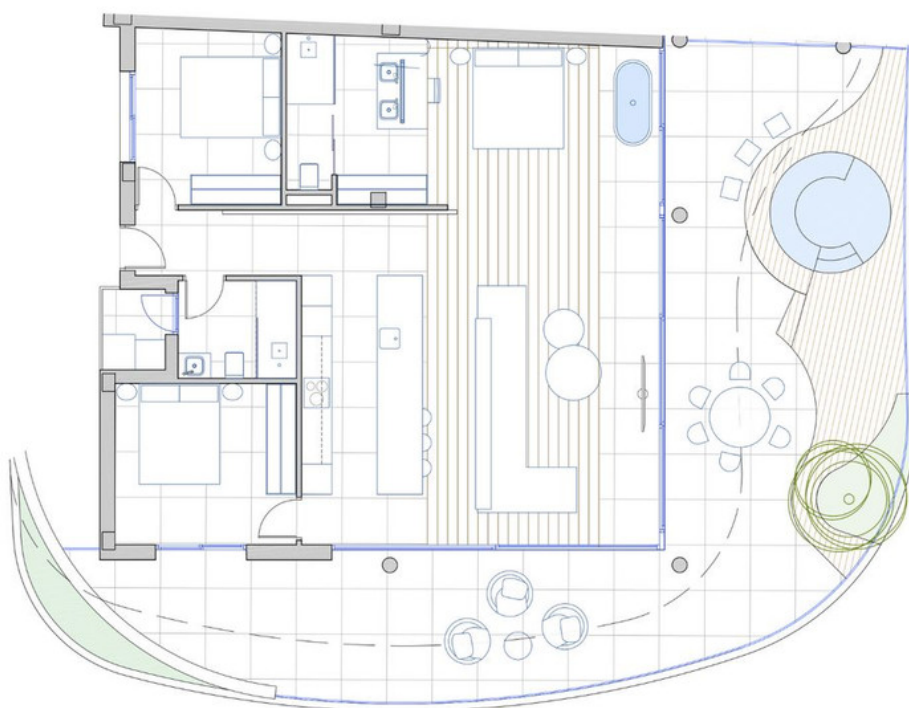












SUPERFICIE DE VIVIENDA 114,38 m²
SUPERFICIE DE TERRAZA 90,98 m²
SUPERFICIE TOTAL 205,36 m²