

## Sales - House - Benalmadena

**1.695.000€**

**Benalmadena**

**House**

**IBI: 367 EUR / year**



**4**



**4**



**500 m2**



**700 m2**

Discover this contemporary villa located in an expanding area of Benalmádena, a sanctuary where every morning is a work of art. Imagine starting each day with the rising sun painting the Mediterranean gold. A life experience that redefines the concept of luxury and exclusivity. Located in the most rapidly expanding and revalued area of Benalmádena, this property offers an unrivalled connection between modern design and the majesty of nature. Light is the protagonist, flooding every corner. A unique opportunity to be the first to enjoy it. Luxury is measured in absolute views and at the same time just minutes from all amenities. Lift on all floors including the garage with capacity for 5 cars, infinity pool, four bedrooms with en-suite bathrooms in all of them, kitchen open to the living room with large windows, laundry area, solarium. It has a 700 m plot, 500 metres of construction, all rooms with panoramic sea views. In a privileged location with direct access to the motorway just three minutes away. Only 15 minutes from Malaga airport and 25 minutes from Marbella. Ideal as a primary residence, second home or investment. Demand for properties with views in Benalmádena in this area of high appreciation is exceptional. Please do not hesitate to contact us for more information or to arrange a viewing. It will not leave you indifferent!

**Setting**

- ✓ Port
- ✓ Close To Golf
- ✓ Close To Port
- ✓ Close To Shops
- ✓ Close To Sea
- ✓ Close To Town
- ✓ Close To Schools
- ✓ Close To Forest
- ✓ Marina
- ✓ Close To Marina
- ✓ Urbanisation

**Climate Control**

- ✓ Air Conditioning
- ✓ Hot A/C
- ✓ Cold A/C

**Kitchen**

- ✓ Fully Fitted

**Utilities**

- ✓ Electricity
- ✓ Drinkable Water
- ✓ Telephone
- ✓ Photovoltaic solar panels
- ✓ Solar water heating

**Orientation**

- ✓ East
- ✓ South East
- ✓ South
- ✓ South West
- ✓ West

**Views**

- ✓ Sea
- ✓ Mountain
- ✓ Golf
- ✓ Beach
- ✓ Country
- ✓ Panoramic
- ✓ Pool
- ✓ Urban
- ✓ Forest
- ✓ Street

**Garden**

- ✓ Private
- ✓ Landscaped
- ✓ Easy Maintenance

**Category**

- ✓ Bargain
- ✓ Beachfront
- ✓ Cheap
- ✓ Distressed
- ✓ Golf
- ✓ Holiday Homes
- ✓ Investment
- ✓ Luxury
- ✓ Resale
- ✓ Contemporary

**Condition**

- ✓ Excellent
- ✓ New Construction

**Features**

- ✓ Covered Terrace
- ✓ Lift
- ✓ Fitted Wardrobes
- ✓ Near Transport
- ✓ Private Terrace
- ✓ Solarium
- ✓ Satellite TV
- ✓ WiFi
- ✓ Games Room
- ✓ Storage Room
- ✓ Utility Room
- ✓ Ensuite Bathroom
- ✓ Access for people with reduced mobility
- ✓ Barbeque
- ✓ Double Glazing
- ✓ Domotics
- ✓ Courtesy Bus
- ✓ Near Mosque
- ✓ Near Church
- ✓ Basement
- ✓ Fiber Optic

**Security**

- ✓ Gated Complex
- ✓ Electric Blinds
- ✓ Entry Phone
- ✓ Alarm System
- ✓ 24 Hour Security

**Pool**

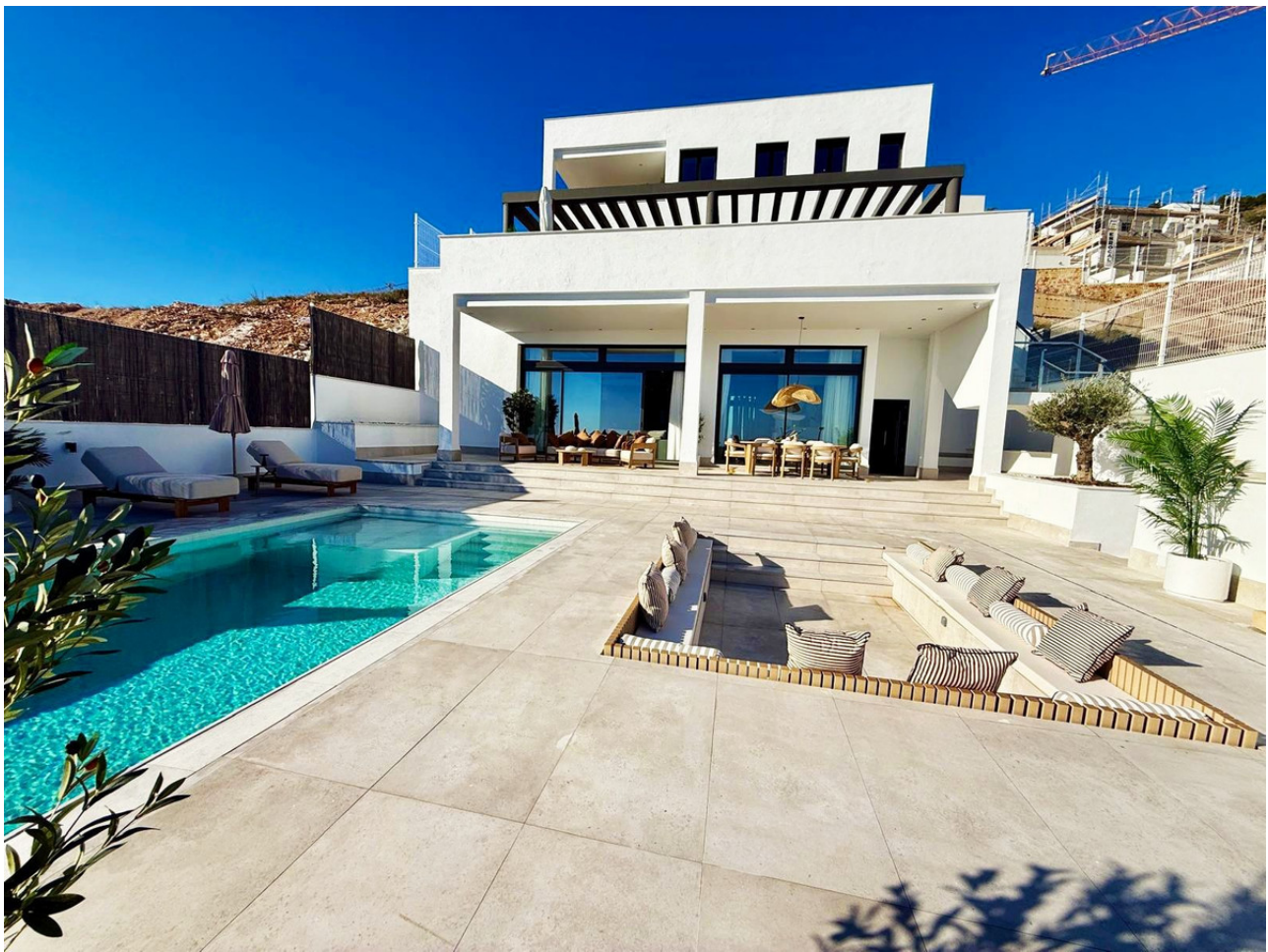
- ✓ Private

**Furniture**

- ✓ Fully Furnished

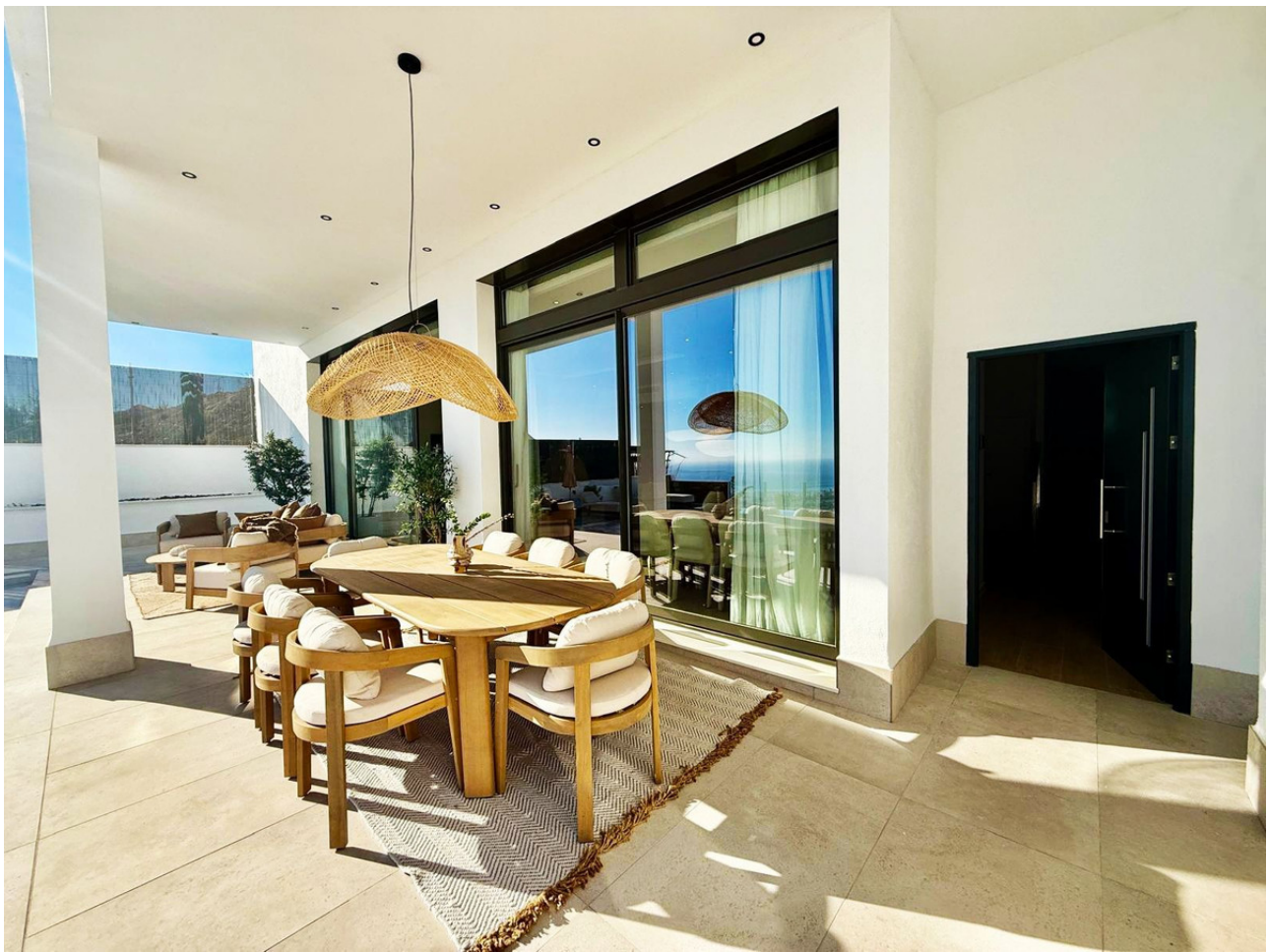
**Parking**

- ✓ Underground
- ✓ Garage
- ✓ Covered
- ✓ More Than One
- ✓ Private































































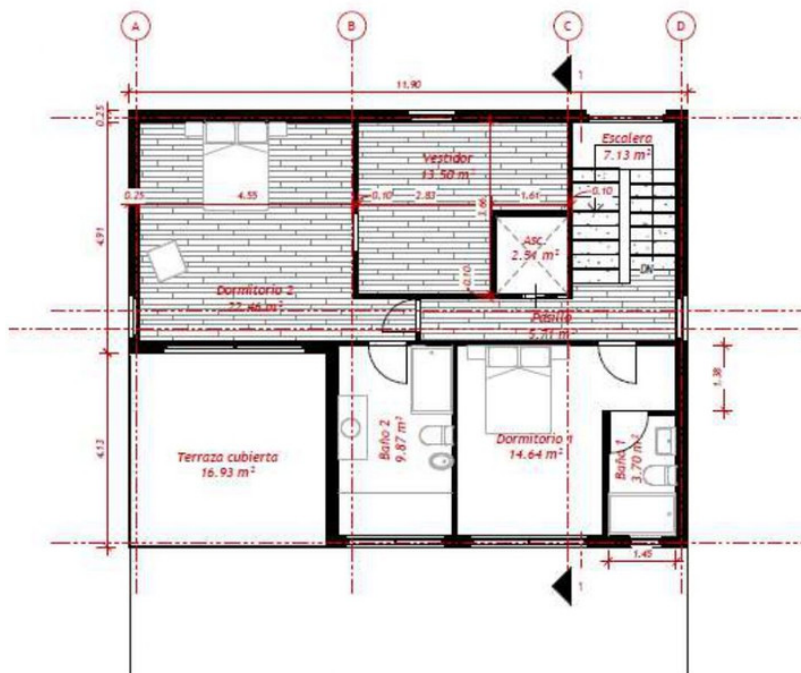




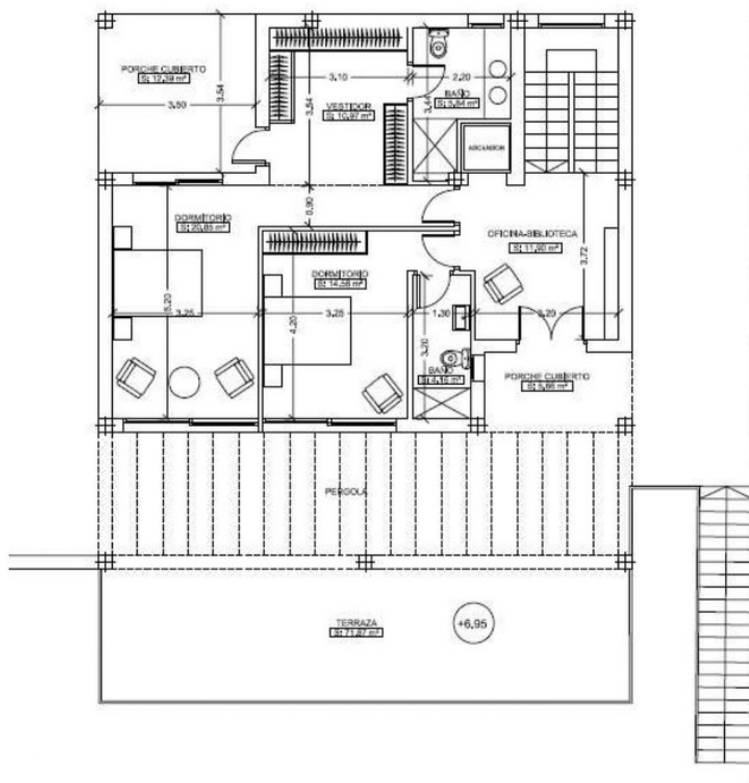




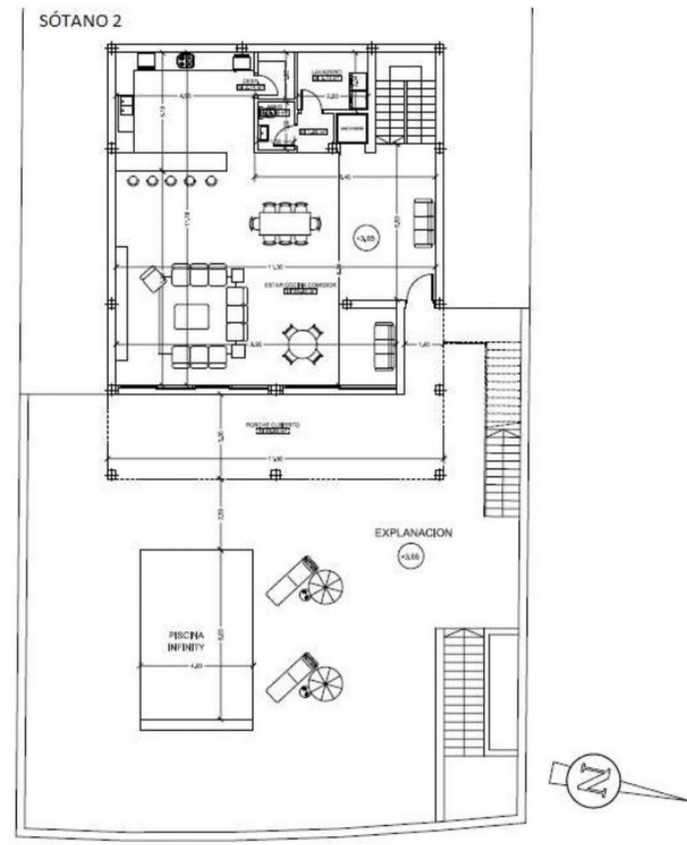
PLANTA PRIMERA



# PLANTA BAJA



## SÓTANO 2



[illegible]

Architectural floor plan of Sótano 1. The plan shows a large rectangular room with a staircase on the right side. A small square room is located at the top left. The plan includes various structural elements and dimensions.