

# Sales - Apartment - La Cala

## 319.000€

La Cala

Apartment

Community: 1,500 EUR / year IBI: 401 EUR / year

Rubbish: 82 EUR / year



2



2



134 m2

Looking for a spacious apartment with a west-facing terrace in a well maintained community with multiple swimming pools? We are delighted to present this immaculate first-floor, two-bedroom apartment, where both bedrooms benefit from en-suite bathrooms, offering comfort and privacy in equal measure. Located just a five-minute drive from the heart of La Cala de Mijas, the property forms part of a highly regarded residential community set within expansive landscaped grounds, complete with elegant water features. Residents enjoy access to three communal swimming pools, a concierge service, and the peace of mind provided by a 24-hour monitored CCTV security system. The apartment itself is presented in excellent condition throughout and is ready for immediate occupation. Additional features include a private underground parking space and a dedicated storage room, making this an ideal option as a permanent residence, holiday home, or investment property.

### Setting

- ✓ Close To Golf
- ✓ Urbanisation

### Climate Control

- ✓ Air Conditioning
- ✓ Hot A/C
- ✓ Cold A/C
- ✓ Fireplace
- ✓ U/F/H Bathrooms

### Kitchen

- ✓ Fully Fitted

### Utilities

- ✓ Electricity

### Orientation

- ✓ West

### Views

- ✓ Mountain
- ✓ Country
- ✓ Street

### Garden

- ✓ Communal

### Category

- ✓ Holiday Homes
- ✓ Investment
- ✓ Resale
- ✓ Contemporary

### Condition

- ✓ Excellent

### Features

- ✓ Covered Terrace
- ✓ Lift
- ✓ Fitted Wardrobes
- ✓ Private Terrace
- ✓ WiFi
- ✓ Storage Room
- ✓ Ensuite Bathroom
- ✓ Access for people with reduced mobility
- ✓ Marble Flooring
- ✓ Double Glazing
- ✓ Fiber Optic

### Security

- ✓ Gated Complex
- ✓ Electric Blinds
- ✓ Entry Phone
- ✓ 24 Hour Security

### Pool

- ✓ Communal

### Furniture

- ✓ Not Furnished

### Parking

- ✓ Underground

































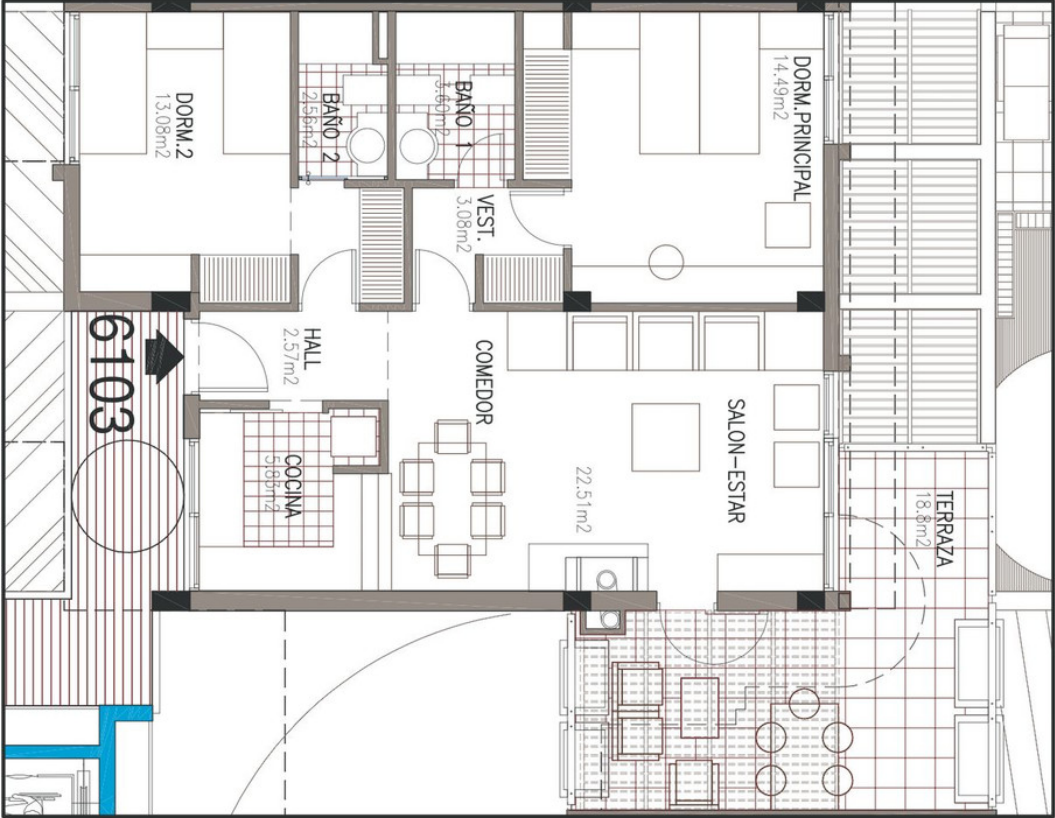












**VIVIENDA TIPO V2dt (central izquierda)**  
Escala: Ver escala gráfica