

Sales - Apartment - Estepona

515.000€

Estepona

Apartment

Community: 1,680 EUR / year IBI: 731 EUR / year

Rubbish: 152 EUR / year



2



2



186 m2

This duplex penthouse is located in the Serenity Views Urbanization, in West Estepona, and stands out for its impressive sea views and spaciousness. The property, situated in a gated community, offers the tranquility of living close to the sea and the convenience of being near golf courses, shops, restaurants, and schools. The home features a spacious main living room, designed with an open-concept layout, which integrates perfectly with the private terrace, allowing you to enjoy natural light and direct panoramic sea views. The kitchen, fully equipped and modern in style, is connected to the living room and includes high-quality appliances, as well as a practical laundry area. In the sleeping area, there are two bedrooms with built-in wardrobes and two full bathrooms, one of them en suite. The bedrooms are designed to offer comfort and privacy, and the master bedroom also has a private bathroom and a private terrace with views of the countryside and mountains. An elegant staircase leads to the solarium, where the sense of spaciousness and the breathtaking sea views are truly impressive. Among the extras offered by this duplex penthouse are air conditioning, double glazing, reinforced door, as well as a garage and storage room included. The complex features a swimming pool and mature communal gardens, and elevator. The property is in excellent condition and has close access to all amenities, including the port, city center, and the beach.

Setting

- ✓ Close To Port
- ✓ Close To Shops
- ✓ Close To Sea
- ✓ Close To Town
- ✓ Close To Schools

Climate Control

- ✓ Air Conditioning

Garden

- ✓ Communal

Orientation

- ✓ South

Views

- ✓ Sea

Security

- ✓ Gated Complex

Condition

- ✓ Excellent

Features

- ✓ Covered Terrace
- ✓ Lift
- ✓ Fitted Wardrobes
- ✓ Private Terrace
- ✓ Solarium
- ✓ Storage Room
- ✓ Double Glazing

Parking

- ✓ Communal

Pool

- ✓ Communal

Kitchen

- ✓ Partially Fitted
- ✓ Kitchen-Lounge





































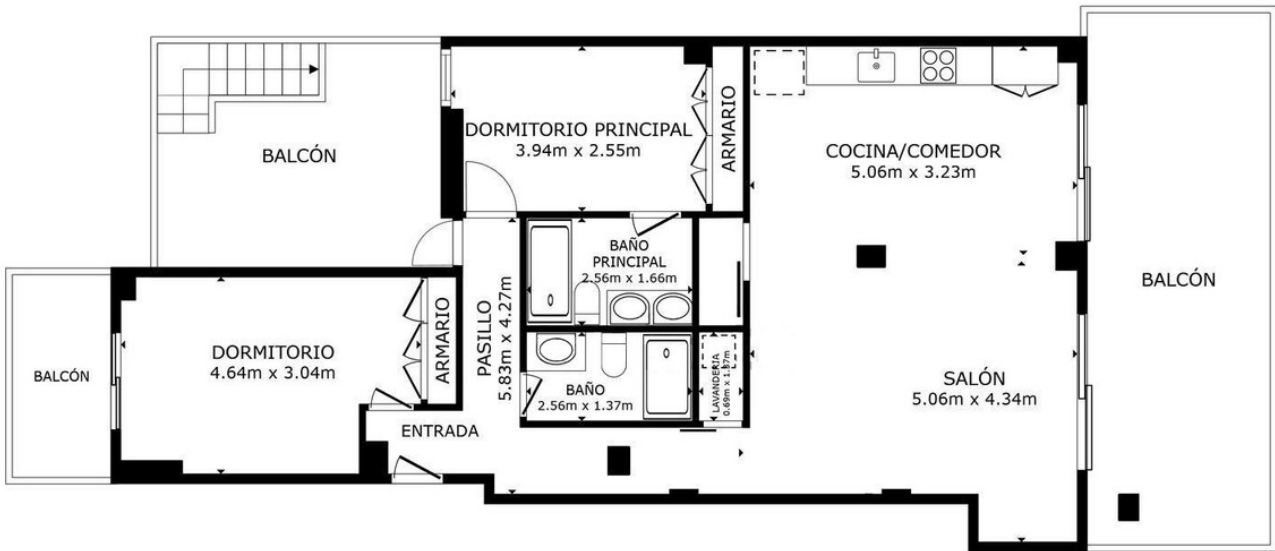












PLANTA

ÁREA INTERNA BRUTA
 PLANTA 83.3 m²
 ÁREAS EXCLUIDAS : BALCÓN 4.8 m² BALCÓN 23.3 m² BALCÓN 15.3 m²
 TOTAL : 83.3 m²
 LOS TAMAÑOS Y LAS DIMENSIONES SON APROXIMADAS Y PUEDEN VARIAR EN ALGUNOS CASOS.