

## Sales - Apartment - Cabopino

**1.150.000€**

**Cabopino**

**Apartment**

**Community: 4,992 EUR / year    IBI: 1,301 EUR / year**

**Rubbish: 185 EUR / year**



**3**



**2**



**149 m2**

Luxury Duplex Penthouse with Panoramic Golf & Sea Views – Cabopino, Marbella This stunning 3-bedroom, 2-bathroom duplex penthouse offers an exceptional lifestyle in one of Marbella’s most sought-after locations. Expansive floor-to-ceiling windows flood the home with natural light, while two generous terraces provide breathtaking frontline golf and Mediterranean sea views. A private jacuzzi creates the perfect setting for relaxation and entertaining, enhanced by the property’s desirable south-southwest orientation for sun throughout the day. The penthouse is presented fully furnished with brand-new, high-quality furniture. The furniture can be purchased separately by agreement. The property also includes two underground parking spaces and a private storage room. Located within the prestigious Artola Homes, a secure gated community designed with resort-style luxury and modern architecture, residents enjoy beautifully landscaped gardens, outdoor and indoor swimming pools, and a fully equipped fitness area. Positioned directly on the frontline of Cabopino Golf Course, the property is just minutes from protected sand dunes, beautiful beaches, and the charming Cabopino Marina with its waterfront restaurants and beach clubs. Cabopino is known for its relaxed yet upscale atmosphere, excellent connectivity, and proximity to nature, while Marbella town center is only a short drive away. The area offers easy access to more than 70 golf courses along the Costa del Sol, international schools, health centers, shopping centers, and Málaga International Airport — making this penthouse ideal both as a permanent residence and as a high-end investment opportunity. A rare opportunity to acquire a luxury penthouse combining panoramic views, privacy, and a prime location. (The images used in this listing are taken from the project’s marketing material prepared during the construction phase. New and updated photos will be added a.s.a.p)

**Setting**

- ✓ Frontline Golf
- ✓ Close To Golf
- ✓ Close To Port
- ✓ Close To Sea
- ✓ Close To Forest
- ✓ Close To Marina

**Climate Control**

- ✓ Air Conditioning
- ✓ Hot A/C
- ✓ Cold A/C

**Kitchen**

- ✓ Fully Fitted

**Utilities**

- ✓ Electricity

**Orientation**

- ✓ South West

**Views**

- ✓ Sea
- ✓ Mountain
- ✓ Golf
- ✓ Panoramic
- ✓ Pool
- ✓ Forest

**Garden**

- ✓ Communal
- ✓ Landscaped
- ✓ Easy Maintenance

**Category**

- ✓ Golf
- ✓ Luxury
- ✓ Resale
- ✓ Contemporary

**Condition**

- ✓ Excellent

**Features**

- ✓ Covered Terrace
- ✓ Lift
- ✓ Fitted Wardrobes
- ✓ Near Transport
- ✓ Private Terrace
- ✓ Solarium
- ✓ Satellite TV
- ✓ WiFi
- ✓ Gym
- ✓ Storage Room
- ✓ Utility Room
- ✓ Ensuite Bathroom
- ✓ Marble Flooring
- ✓ Double Glazing
- ✓ 24 Hour Reception
- ✓ Fiber Optic

**Security**

- ✓ Gated Complex
- ✓ Electric Blinds
- ✓ Entry Phone
- ✓ Alarm System
- ✓ 24 Hour Security

**Pool**

- ✓ Communal
- ✓ Private
- ✓ Indoor
- ✓ Children`s Pool

**Furniture**

- ✓ Fully Furnished
- ✓ Optional

**Parking**

- ✓ Underground
- ✓ More Than One























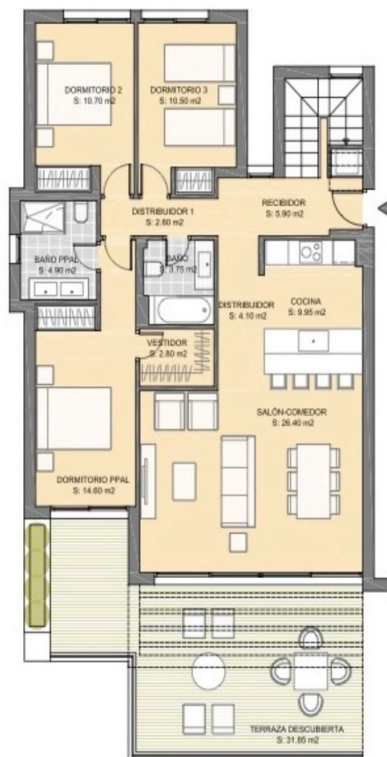












PLANTA 1



PLANTA SOLARIUM

