

Sales - Apartment - Estepona

700.000€

Estepona

Apartment

Community: 1,260 EUR / year IBI: 319 EUR / year

Rubbish: 115 EUR / year



3



2



220 m2

STUNNING PENTHOUSE FOR SALE IN ESTEPONA, COSTA DEL SOL! Welcome to luxury living in this breathtaking penthouse apartment, ideally located on the edge of Estepona's charming Old Town. From the moment you enter, you'll be captivated by the panoramic views that stretch across the coast and surrounding landscape. This unique property features three spacious bedrooms, including a master suite with its own private en suite bathroom, plus an additional sleek and modern second bathroom. Designed for comfort and versatility, the apartment offers not one but two fully equipped kitchens – perfect for entertaining guests or enjoying extra flexibility in your daily living. Step outside to the sunny roof solarium – an ideal space for relaxing, dining al fresco, or simply soaking up the views and the warm Costa del Sol sunshine. Additional perks include a private storage room, a dedicated garage space, and access to a beautifully maintained communal swimming pool. Set in a prime location just minutes from everything Estepona has to offer, this penthouse is not only a stylish home but also a fantastic investment opportunity. A true gem that must be seen to be believed – contact us today to arrange your viewing!

Setting

- ✓ Town
- ✓ Close To Shops
- ✓ Close To Town
- ✓ Close To Schools
- ✓ Urbanisation

Climate Control

- ✓ Air Conditioning

Orientation

- ✓ South East
- ✓ South
- ✓ South West
- ✓ West

Views

- ✓ Sea
- ✓ Mountain
- ✓ Panoramic
- ✓ Urban

Condition

- ✓ Excellent

Features

- ✓ Covered Terrace
- ✓ Lift
- ✓ Fitted Wardrobes
- ✓ Near Transport
- ✓ Private Terrace
- ✓ Solarium
- ✓ WiFi
- ✓ Storage Room
- ✓ Utility Room
- ✓ Ensuite Bathroom
- ✓ Near Church

Parking

- ✓ Underground

Pool

- ✓ Communal

Furniture

- ✓ Part Furnished

Kitchen

- ✓ Fully Fitted

Garden

- ✓ Communal

Utilities

- ✓ Electricity

Category

- ✓ Holiday Homes
- ✓ Investment
- ✓ Resale









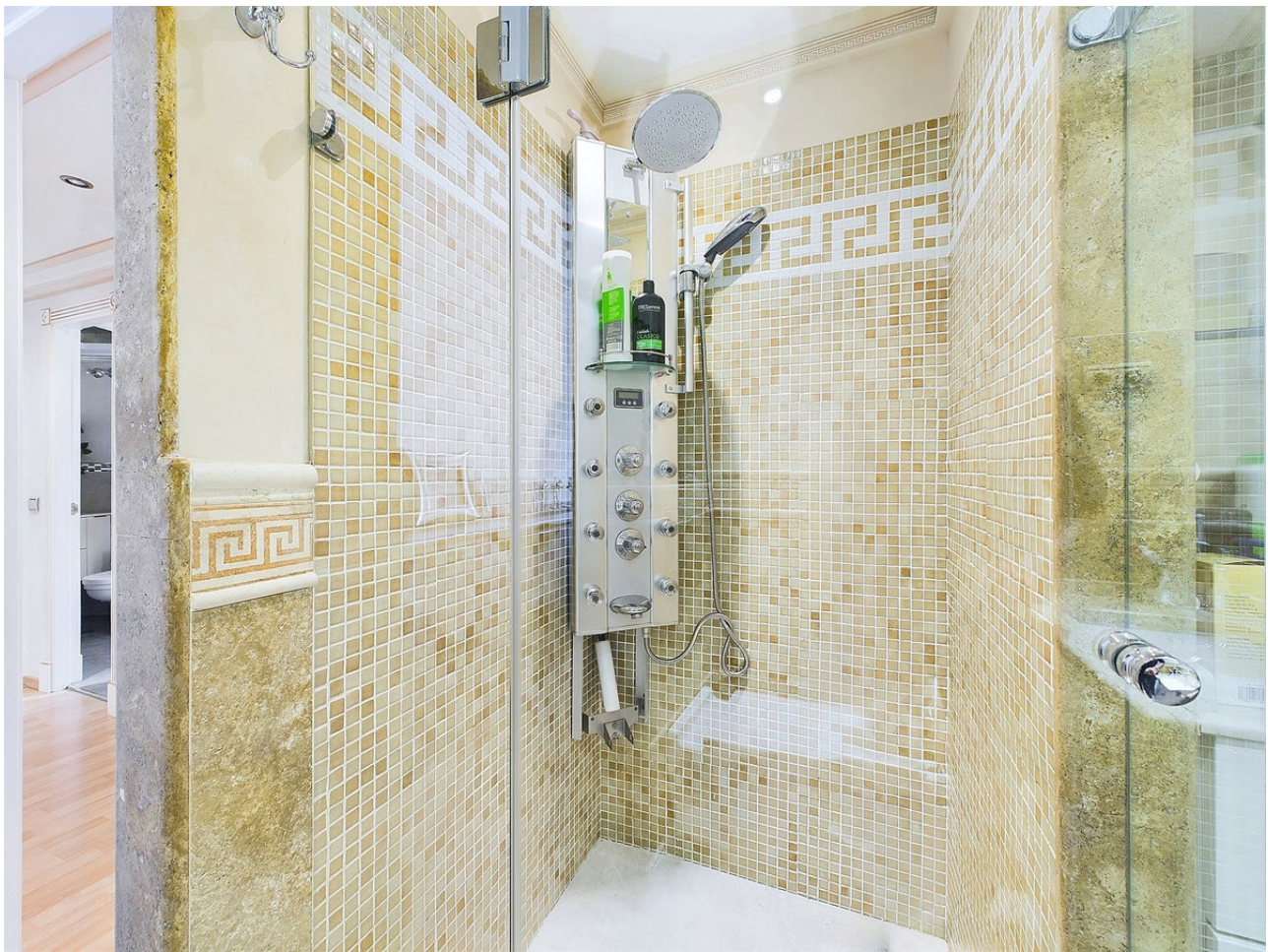










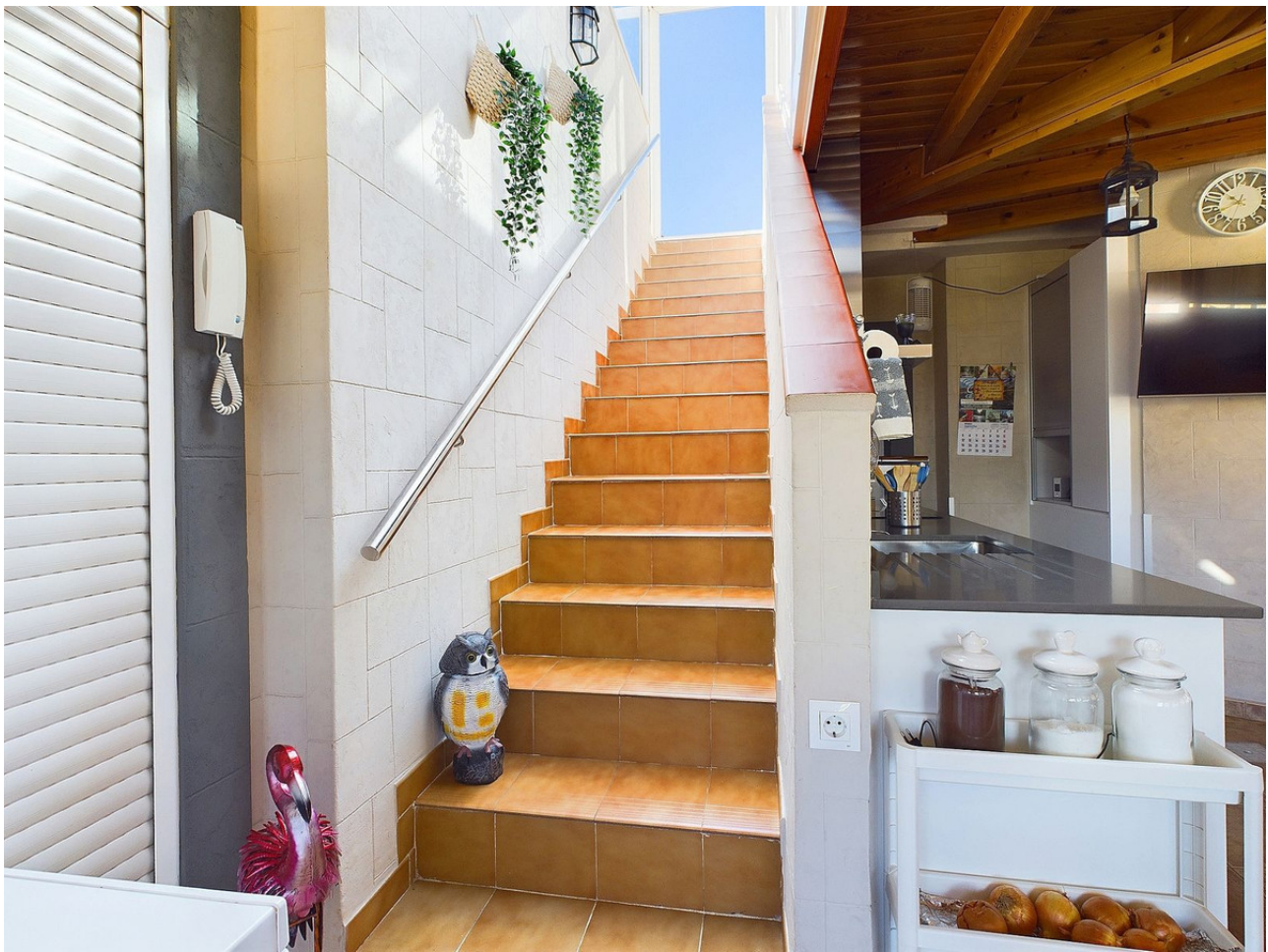














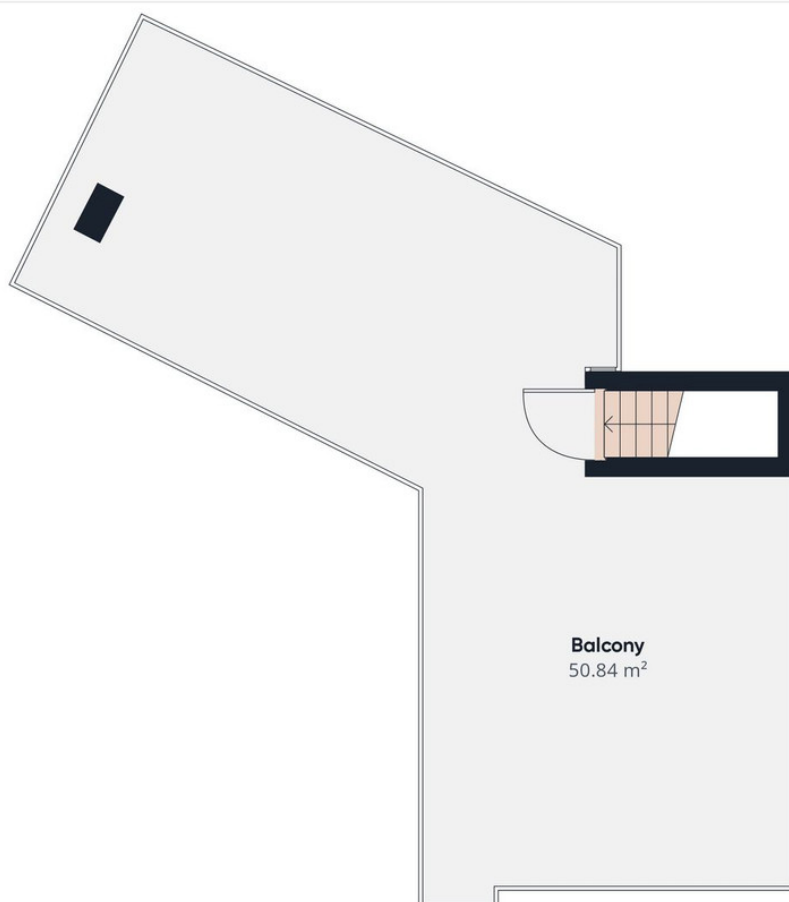








Floor 0



Floor 1