

Sales - Apartment - Fuengirola

995.000€

Community: 5,004 EUR / year



Now available: newly completed luxury residence in Reserva del Higuierón - ready for immediate viewing This resale unit has just been completed and is move-in ready. Located in the most exclusive phase of the development, it offers the unique convenience of being only 500 meters from the beach. It is the only phase where all high-end amenities are housed within the same building. In future phases, residents will need to walk here to access shared facilities, making this property especially convenient and private. The home enjoys panoramic sea views from its elevated position, with a tiered architectural design that follows the natural slope of the land. Inside, you'll find a bright and open layout with floor-to-ceiling windows, offering a seamless connection between indoor and outdoor living. The interiors are finished with high-quality materials and a calm, modern design. For practicality and comfort, the property includes two large underground parking spaces and a private 25m² storage room, ideal for storing sports equipment, luggage, or seasonal items. Residents in this phase have direct internal access to: Infinity pool with solarium and bar Heated indoor pool Full spa with sauna, hammam, salt cave, Jacuzzi, and massage rooms Gym with Technogym equipment and frontal sea views Private cinema room Coworking space Landscaped gardens and quiet areas to relax The home also features smart and eco-efficient systems, including home automation, aerothermal energy, rainwater reuse, low-consumption fixtures, solar protection, and native plant landscaping that reduces water use. Additional services include a concierge available seven days a week, a one-year Platinum membership to the Reserva del Higuierón Sport Club, access to the private Owners Club, and a free community shuttle to local shopping areas. This is a rare opportunity to own a newly finished, never-lived-in resale unit in the most desirable part of Reserva del Higuierón — with every comfort and amenity located directly within your building. Contact us to arrange your private viewing.

Setting

- ✓ Suburban
- ✓ Close To Shops
- ✓ Close To Sea
- ✓ Close To Town
- ✓ Close To Schools
- ✓ Urbanisation

Climate Control

- ✓ Air Conditioning
- ✓ Hot A/C
- ✓ Cold A/C

Kitchen

- ✓ Fully Fitted

Utilities

- ✓ Electricity

Orientation

- ✓ South East

Views

- ✓ Sea
- ✓ Panoramic

Garden

- ✓ Communal

Category

- ✓ Investment
- ✓ Luxury
- ✓ Resale

Condition

- ✓ Excellent

Features

- ✓ Covered Terrace
- ✓ Lift
- ✓ Fitted Wardrobes
- ✓ Private Terrace
- ✓ WiFi
- ✓ Sauna
- ✓ Paddle Tennis
- ✓ Ensuite Bathroom
- ✓ Jacuzzi
- ✓ Double Glazing
- ✓ 24 Hour Reception
- ✓ Fiber Optic

Security

- ✓ Gated Complex
- ✓ Electric Blinds
- ✓ Entry Phone
- ✓ 24 Hour Security

Pool

- ✓ Communal
- ✓ Indoor
- ✓ Heated

Furniture

- ✓ Not Furnished

Parking

- ✓ Underground





































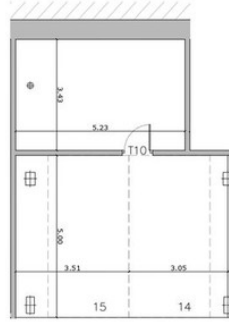




SUPERFICIE CONSTRUIDA VIVIENDA

SUPERFICIE CONSTRUIDA ANEXOS

BLOQUE 1	Unidad	Unidad	SUPERFICIE CONSTRUIDA VIVIENDA					TOTAL CONSTRUIDA (m ²)	SUPERFICIE CONSTRUIDA ANEXOS			TOTAL ANEXOS (m ²)	
			Vivienda (m ²)	Lavadero (m ²)	Terraza (m ²)	Patio/terrazo (m ²)	Porch/Lab. agua (m ²)		Aparcamientos	Trasteros	TOTAL ANEXOS (m ²)		
PLANTA SEGUNDA	2 ^a	DELFINO	84,59	3,04	36,05	0,00	0,00	123,68	Unidad	m ²	Unidad	m ²	
									14 (2)	15,28	10 (2)	22,61	50,19
									15 (2)	12,50			



APARCAMIENTOS Y TRASTERO



ESCALA: 1:100

Las superficies expresadas, al dimensionarse de pilares, la situación de vigas y cornisas de cerramiento, podrán experimentar leves variaciones durante la ejecución de la obra por exigencias técnicas, prácticas, constructivas. Los muestros serán los señalados en el momento de colocación. El responsable del presente documento es el autor, quien garantiza la veracidad de los datos técnicos y constructivos presentados.