

**Sales - Apartment - New Golden Mile**

**850.000€**

## New Golden Mile

## Apartment

Community: 5,976 EUR / year IBI: 918 EUR / year

Rubbish: 152 EUR / year



3



2



123 m2

Luxury contemporary middle floor apartment in the stylish Cataleya complex on the New Golden Mile, East-Estepona. Breathe nature and enjoy the tranquility and views in this amazing luxury complex with easy access to all amenities, schools, Puerto Banus, Marbella, San Pedro, Estepona and the beach. Apartment highlights \* Luxury super modern middle floor apartment with a large L-shaped terrace wrapped around the living room \* Stylish minimalist architectural appearance with white ceramic tiles, white fitted wardrobes, white kitchen island and bathrooms \* Corner position = more privacy and increased views variety \* Beautiful views over the gardens and pool area towards the mountains \* 3 bedrooms + 2 bathrooms of which 1 en-suite \* South-West orientation \* An important feature are the floor to ceiling sliding windows which create a smooth transition of the living room into the extensive terrace area, perfect for maximum enjoyment of the Mediterranean climate and creating lots of extra living space, chillout area, outdoor dining area.... \* Air-conditioning for cooling and heating \* Fitted wardrobes in all bedrooms \* Fully fitted kitchen with all appliances \* 2 spacious and easy accessible underground parking spaces + very large storage room. This beautiful apartment is in an immaculate condition throughout as it has been barely used by the current owners. It is located on the highest point of the most recently built phase of the complex, creating nice views over the entire phase. Community highlights \* Gated with barriers and benefitting from 24h security patrol \* Stunning, state-of-the-art communal gardens. \* Heated outdoor pool, enabling outdoor swimming all year round \* Cataleya is known as one of the most sought after and stylish contemporary communities in the Golden Triangle Marbella-Estepona Benahavis. It has superior fixtures and fittings and was built by the highly respected Eraser developer and builder. \* Located adjacent to the Atalaya golf course, on the most eastern tip of the New Golden Mile \* Short drive to the Blue Flag El Saladillo Beach which also counts several beach excellent restaurants \* Very short drive to local supermarkets (Mercadona, ) and 2 commercial centres with a wide range of services, cafes, restaurants and 2 banks \* Very short drive to a plethora of golf courses (Atalaya, El Paraiso, Guadalmina, El Higueral, and all the courses of the Golf Valley)

### Setting

- ✓ Close To Shops
- ✓ Close To Sea
- ✓ Close To Town
- ✓ Close To Schools
- ✓ Urbanisation

### Climate Control

- ✓ Air Conditioning
- ✓ Hot A/C
- ✓ Cold A/C

### Kitchen

- ✓ Fully Fitted

### Utilities

- ✓ Electricity
- ✓ Drinkable Water

### Orientation

- ✓ South
- ✓ West

### Views

- ✓ Mountain
- ✓ Golf
- ✓ Panoramic
- ✓ Garden
- ✓ Pool
- ✓ Urban

### Garden

- ✓ Communal
- ✓ Landscaped

### Category

- ✓ Golf
- ✓ Holiday Homes
- ✓ Investment
- ✓ Luxury
- ✓ Resale
- ✓ Contemporary

### Condition

- ✓ Excellent

### Features

- ✓ Covered Terrace
- ✓ Lift
- ✓ Fitted Wardrobes
- ✓ Private Terrace
- ✓ WiFi
- ✓ Storage Room
- ✓ Utility Room

### Security

- ✓ Gated Complex
- ✓ 24 Hour Security

### Pool

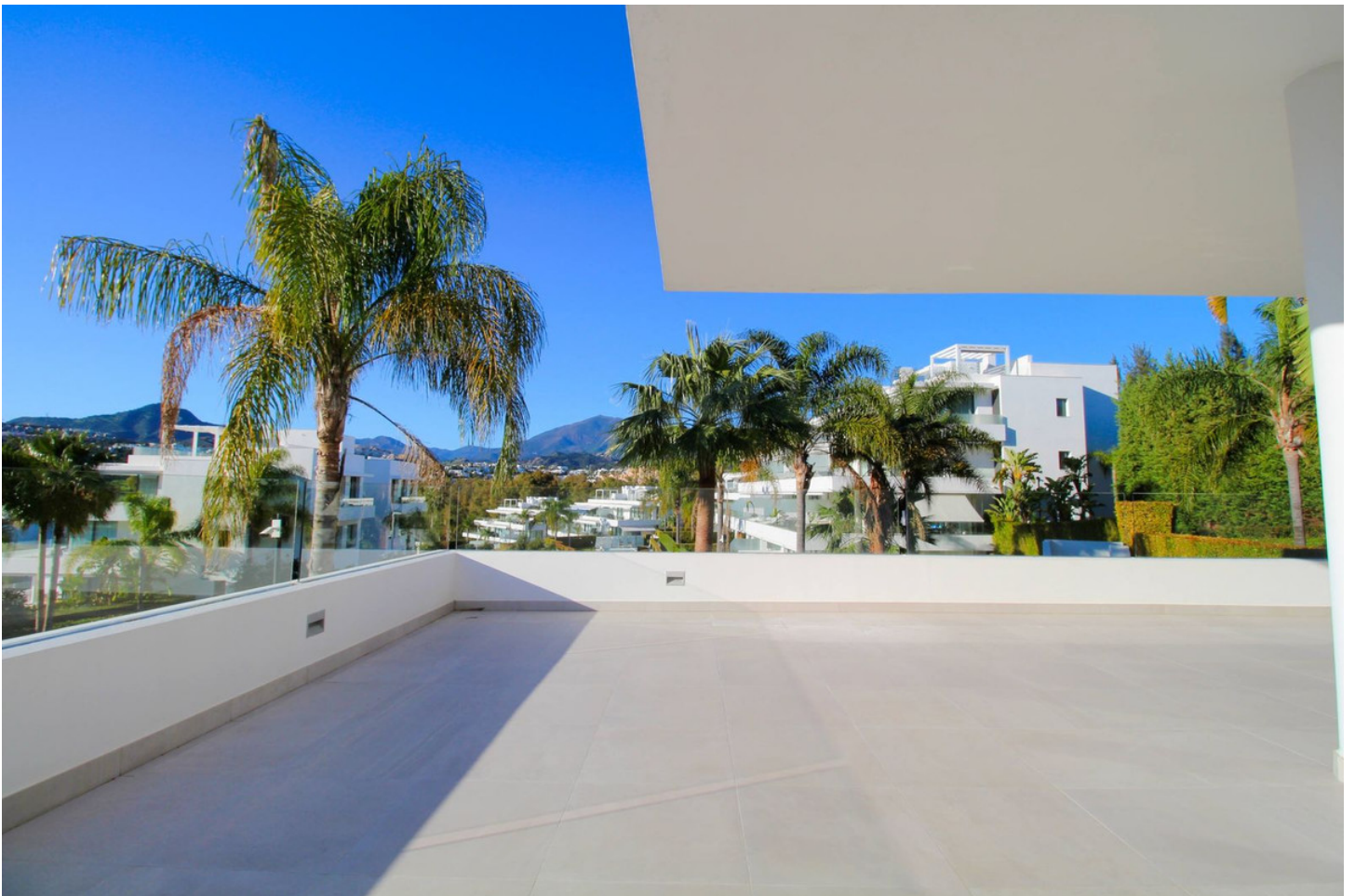
- ✓ Communal
- ✓ Heated
- ✓ Children`s Pool

### Furniture

- ✓ Optional

### Parking

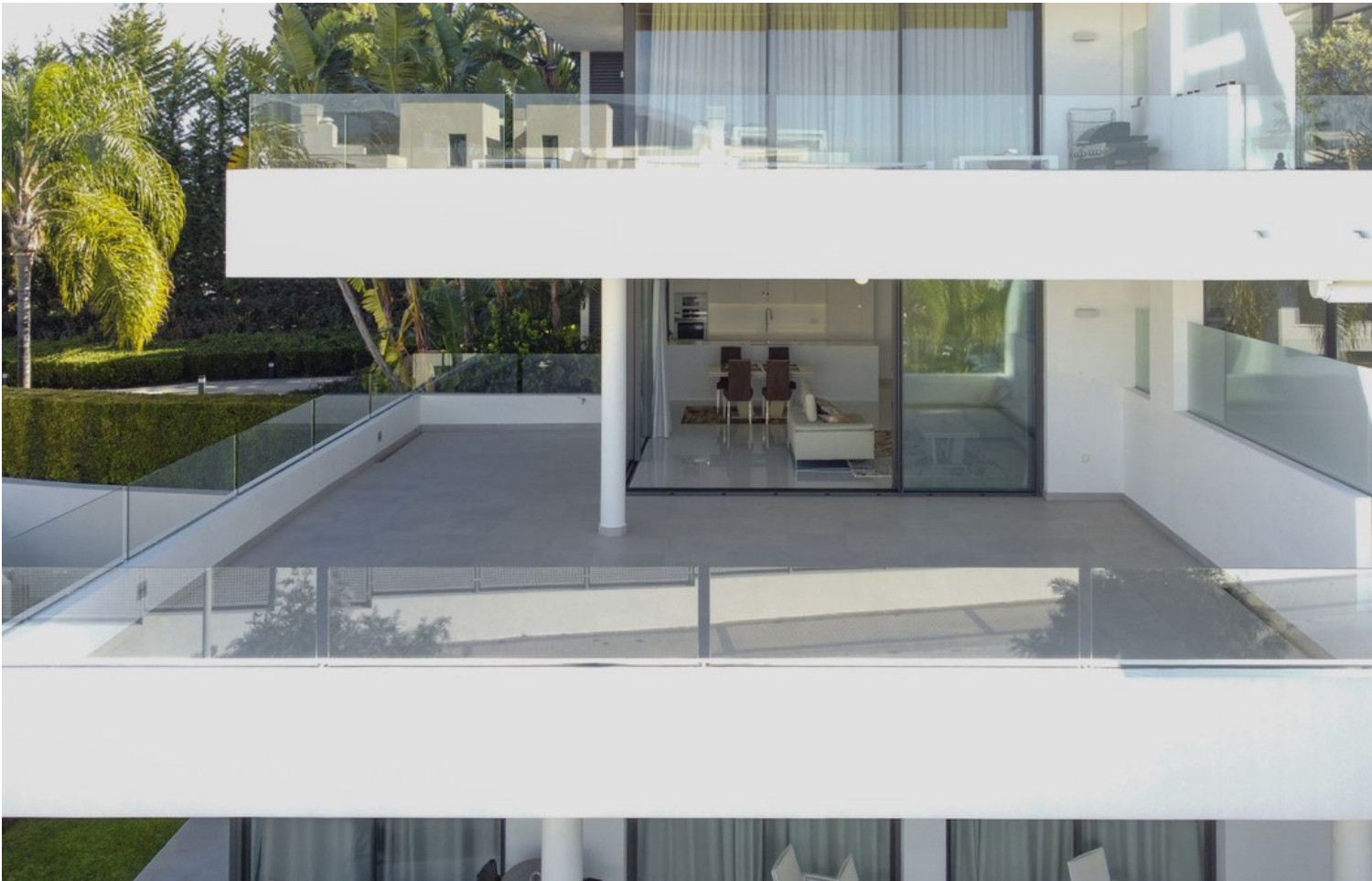
- ✓ Underground
- ✓ More Than One
- ✓ Private









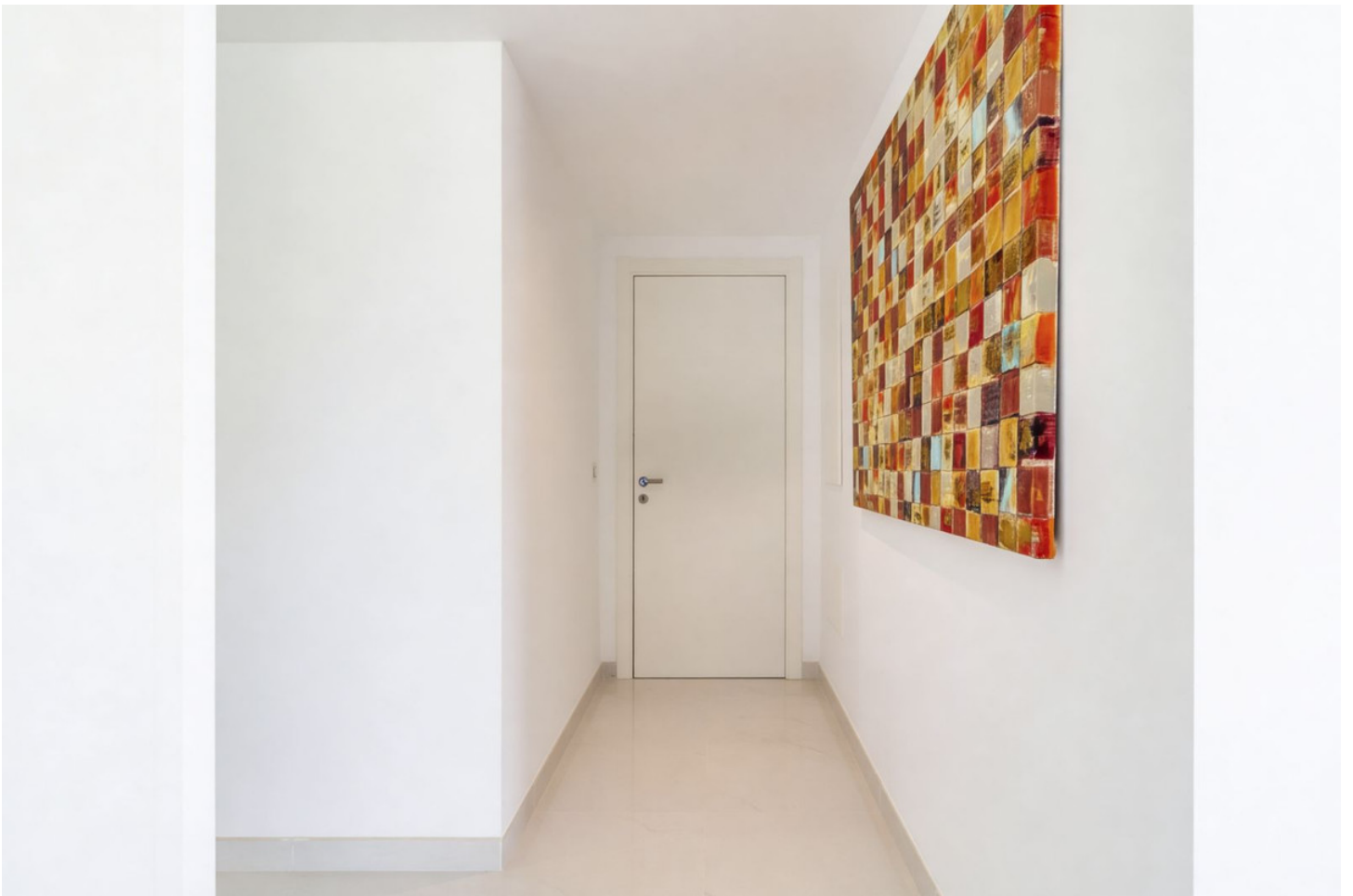
















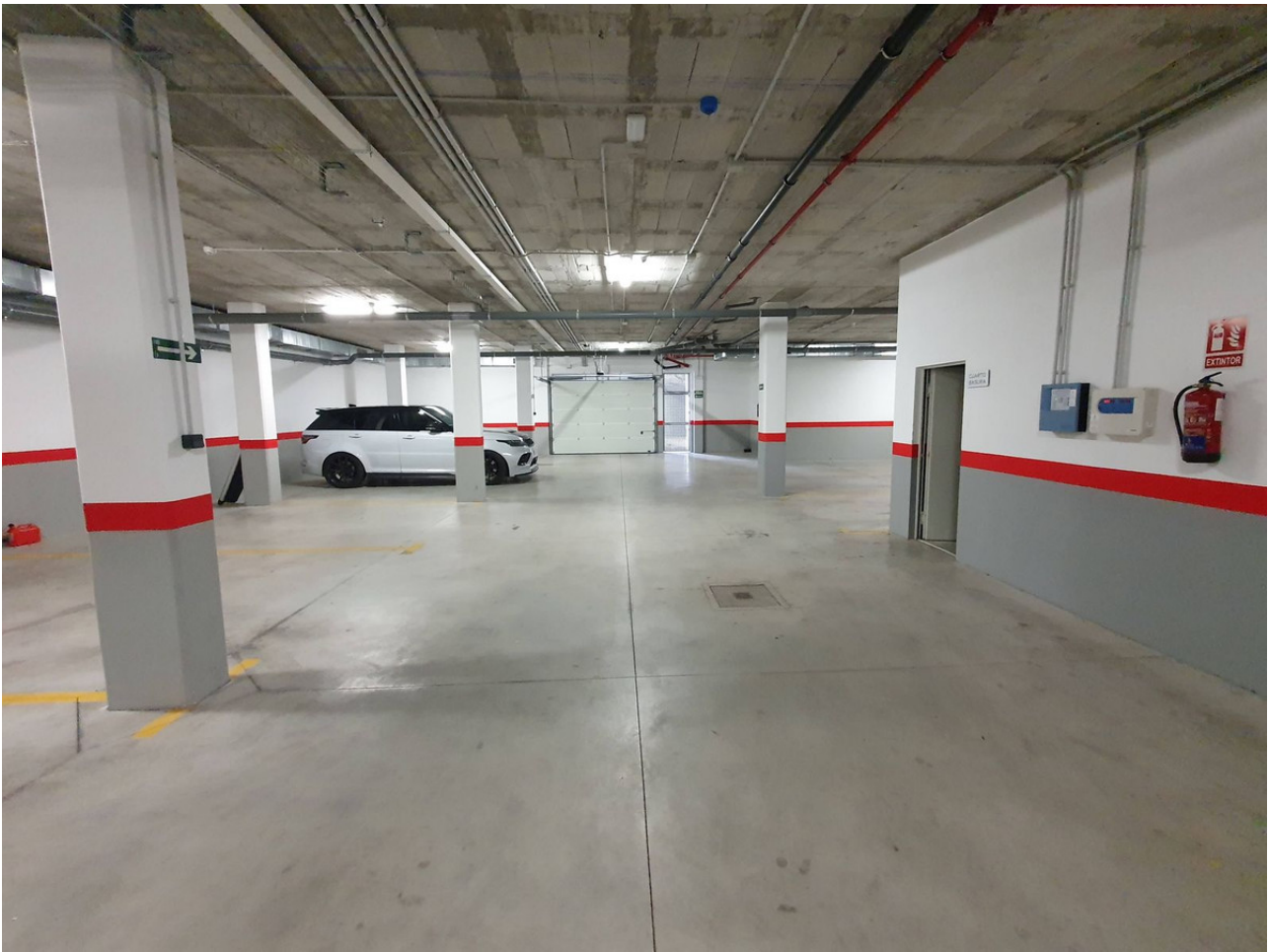


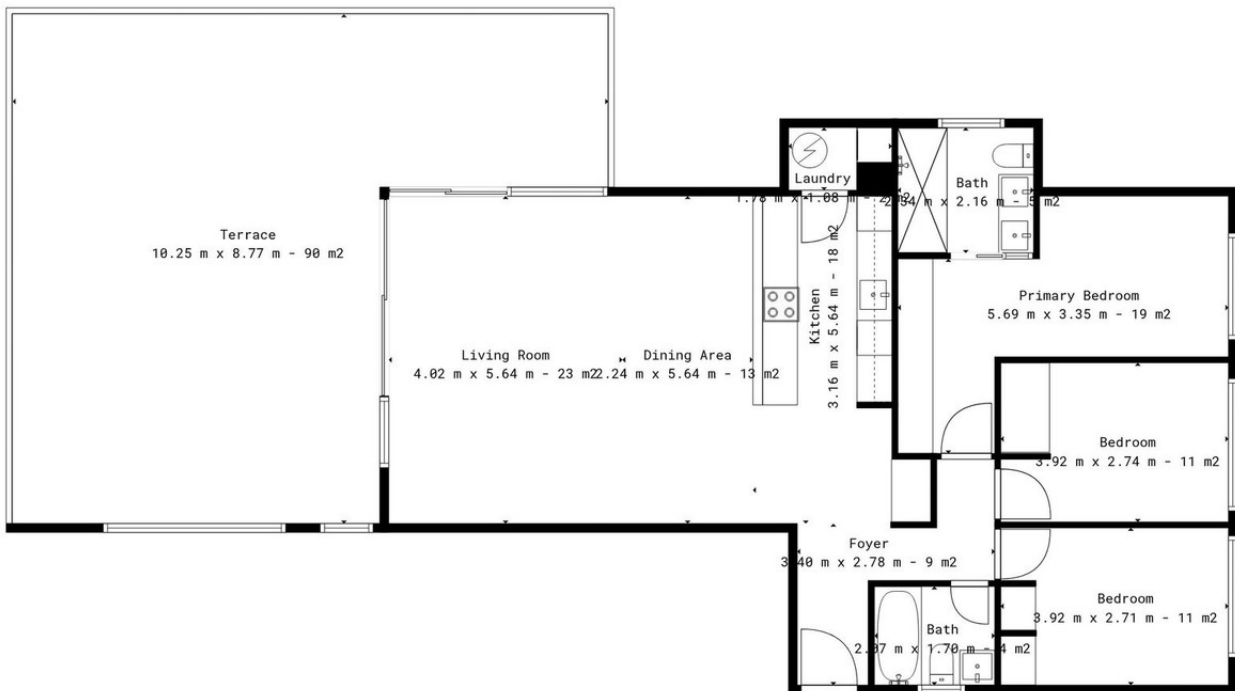












**TOTAL: 107 m<sup>2</sup>**  
 1st floor: 107 m<sup>2</sup>  
 EXCLUDED AREAS: TERRACE: 67 m<sup>2</sup>, WALLS: 8 m<sup>2</sup>

Please Note Dimensions Are Believed To Be Correct But Subject To Errors.

