

Sales - Apartment - Torrequebrada

1.150.000€

Torrequebrada

Apartment

Community: 3,984 EUR / year IBI: 896 EUR / year

Rubbish: 68 EUR / year



3



3



185 m2

Imagine waking up to the first rays of sunlight filling your spacious living room, while endless Mediterranean blue stretches beyond your windows. This unique 185 m² duplex apartment in Benalmádena, Torrequebrada offers the perfect blend of modern comfort, style, and a prime location. Built in 2023 and in impeccable condition, the apartment features bright, contemporary finishes that create a light and elegant atmosphere. The upper level welcomes you with a spacious living room, dining area, and open-plan kitchen — perfect for everyday living and entertaining. From here, step onto a large south-southwest facing terrace, ideal for enjoying spectacular sunsets and sea views. This level also includes an entrance hall and a guest toilet. The lower level offers a rare feature for Spanish apartments — a large and welcoming hallway that enhances the feeling of a true home. Here you'll find three bright and spacious bedrooms. The master bedroom has an en-suite shower room and direct access to a private enclosed patio — a versatile space perfect for a sauna, gym, or shaded relaxation area. The other two bedrooms also enjoy sea views and share a modern shower room. Thanks to its smart two-level layout, generous entrance areas, terrace, and patio, this property feels more like a townhouse while maintaining the convenience of apartment living. Additional features: - 2 underground parking spaces - Large storage room next to the apartment - Small, well-maintained community of only 12 apartments - Stunning panoramic swimming pool - Tourist license The location is another major highlight: walking distance to the beach, just 100 meters from Mercadona supermarket, close to restaurants including the prestigious Trocadero, public transport, and an international English college. An ideal property for both living and investment. Contact us for the private viewing!

Setting

- ✓ Beachside
- ✓ Close To Golf
- ✓ Close To Shops
- ✓ Close To Sea
- ✓ Close To Town
- ✓ Close To Schools
- ✓ Urbanisation

Climate Control

- ✓ Air Conditioning

Kitchen

- ✓ Fully Fitted

Utilities

- ✓ Electricity

Orientation

- ✓ South
- ✓ South West

Views

- ✓ Sea

Garden

- ✓ Communal

Category

- ✓ Luxury
- ✓ Resale
- ✓ Contemporary

Condition

- ✓ Excellent

Features

- ✓ Covered Terrace
- ✓ Lift
- ✓ Fitted Wardrobes
- ✓ Near Transport
- ✓ Private Terrace
- ✓ Storage Room
- ✓ Utility Room
- ✓ Ensuite Bathroom
- ✓ Double Glazing
- ✓ Near Church
- ✓ Fiber Optic

Security

- ✓ Gated Complex
- ✓ Entry Phone

Pool

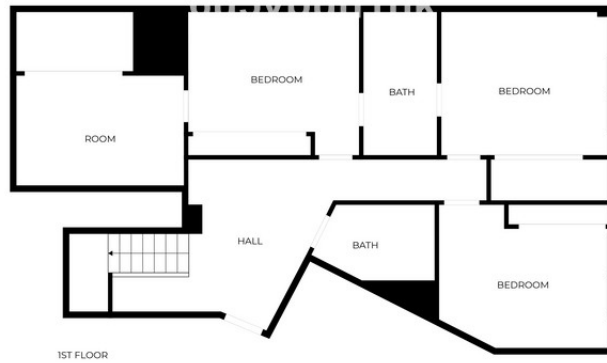
- ✓ Communal

Furniture

- ✓ Optional

Parking

- ✓ Garage
- ✓ Communal



SIZES ARE APPROXIMATE, ACTUAL MAY VARY.























