

Sales - Apartment - Fuengirola

695.000€

Fuengirola

Apartment



2



2



85 m2

Compare the price for example with ground floor apartments in the area and you'll find this a very interestingly priced home. ALSO: Do you want to SAVE 20.000 € in purchase costs? Unlike most new builds in the area, this home comes with only 7% transfer tax instead of 10% VAT. That means you save over 20.000€ in purchase costs - instantly. This opportunity you'll find in El Higuero - one of the most sought-after locations between Benalmádena and Fuengirola. Easy walk, only 500m, to the El Higuero Sport Club & Spa & Hotel since this penthouse is situated on the same height with the hotel. Hotel has a lot of wellness amenities, like pilates, yoga, padel, award winning spa, Michelin star restaurant and bistro, cafés, etc... 1,2 km from the beach and Carvajal train station. This stunning penthouse, built in 2026 is not just about sunny and healthy lifestyle... it's also a smart investment. - 2 bedrooms | 2 bathrooms. - Spacious 53 sqm terrace with private jacuzzi for 7. - Sea, pool and mountain view. - 2 underground parking spaces + storage. - Access to pool, gym & co-working spaces (in the same community). If you've been waiting for the right penthouse... this might be it! Book a viewing and let's find out if this is the right holiday home for you.

Setting

- ✓ Close To Sea
- ✓ Close To Town
- ✓ Close To Schools
- ✓ Urbanisation

Climate Control

- ✓ Air Conditioning
- ✓ Central Heating
- ✓ U/F/H Bathrooms

Kitchen

- ✓ Fully Fitted

Utilities

- ✓ Electricity
- ✓ Drinkable Water

Orientation

- ✓ South West
- ✓ West

Views

- ✓ Sea
- ✓ Mountain
- ✓ Pool
- ✓ Urban

Garden

- ✓ Communal

Category

- ✓ Holiday Homes
- ✓ Luxury
- ✓ Contemporary

Condition

- ✓ Excellent
- ✓ New Construction

Features

- ✓ Lift
- ✓ Fitted Wardrobes
- ✓ Near Transport
- ✓ Private Terrace
- ✓ WiFi
- ✓ Gym
- ✓ Storage Room
- ✓ Ensuite Bathroom
- ✓ Access for people with reduced mobility
- ✓ Double Glazing
- ✓ Domotics
- ✓ Fiber Optic

Security

- ✓ Gated Complex
- ✓ Entry Phone
- ✓ Alarm System

Pool

- ✓ Communal

Furniture

- ✓ Optional

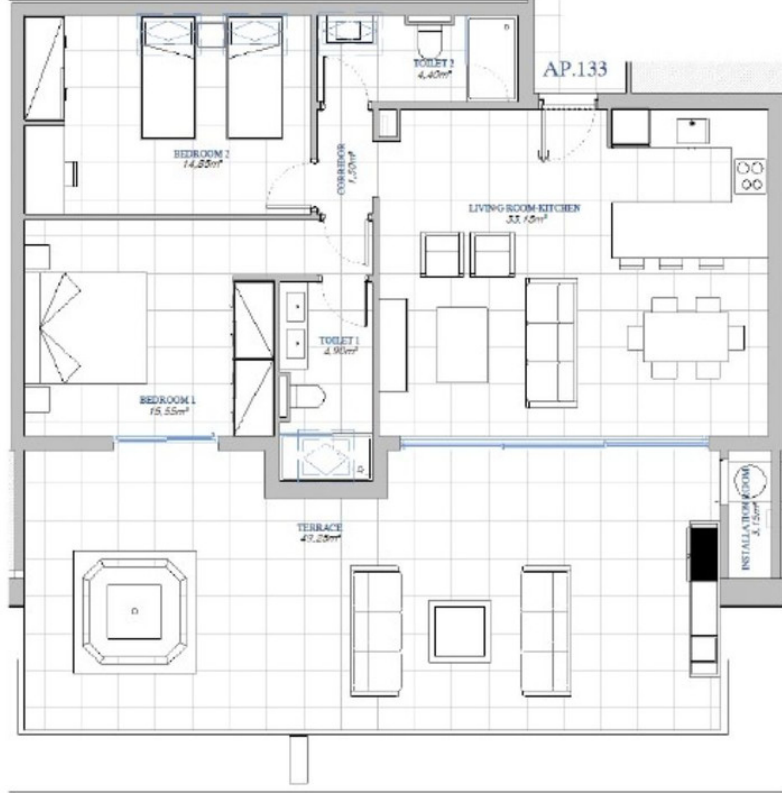
Parking

- ✓ Underground
- ✓ Garage
- ✓ Covered
- ✓ More Than One
- ✓ Communal
- ✓ Private









BUILT AREA

Living Area	85,27 m ²
Terrace Area	53,81 m ²
TOTAL BUILT AREA:	139,08 m ²













