

Sales - Apartment - Estepona

480.000€

Estepona

Apartment

Community: 2,292 EUR / year IBI: 428 EUR / year

Rubbish: 116 EUR / year



2



2



95 m2

Exclusive duplex penthouse in Estepona, located in the prestigious Sunset Golf complex and with a tourist rental license, offering stunning panoramic views of the sea, mountains, and gardens, in one of the most sought-after areas just minutes from the beach. This elegant contemporary-style property features a layout designed to maximize natural light and comfort, with a fully equipped kitchen on the main floor, a spacious and bright living room with direct access to a private terrace, as well as generously sized bedrooms with built-in wardrobes, the master standing out with an en-suite bathroom. On the upper floor, the property boasts a magnificent solarium, an ideal space to relax outdoors and enjoy spectacular sunsets. The home also includes air conditioning, central heating, an underground parking space, and a storage room, and is part of a gated community with a lift, swimming pool, beautifully maintained gardens, and 24-hour security. Its location, next to Resina Golf & Country Club and close to cafés, shops, and all amenities, makes it an ideal option as a permanent residence, holiday home, or tourist investment.

Setting

- ✓ Close To Port
- ✓ Close To Shops
- ✓ Close To Sea
- ✓ Close To Town
- ✓ Close To Schools
- ✓ Close To Marina
- ✓ Urbanisation

Climate Control

- ✓ Air Conditioning
- ✓ Hot A/C
- ✓ Cold A/C
- ✓ Central Heating

Kitchen

- ✓ Fully Fitted

Utilities

- ✓ Electricity
- ✓ Drinkable Water

Orientation

- ✓ South West

Views

- ✓ Sea
- ✓ Mountain
- ✓ Country
- ✓ Panoramic
- ✓ Garden

Garden

- ✓ Communal

Category

- ✓ Golf
- ✓ Resale

Condition

- ✓ Excellent

Features

- ✓ Covered Terrace
- ✓ Lift
- ✓ Fitted Wardrobes
- ✓ Private Terrace
- ✓ Solarium
- ✓ Storage Room
- ✓ Ensuite Bathroom
- ✓ Barbeque
- ✓ Double Glazing
- ✓ Fiber Optic

Security

- ✓ Gated Complex
- ✓ Entry Phone
- ✓ Safe

Pool

- ✓ Communal

Furniture

- ✓ Optional

Parking

- ✓ Underground
- ✓ Garage
- ✓ Private

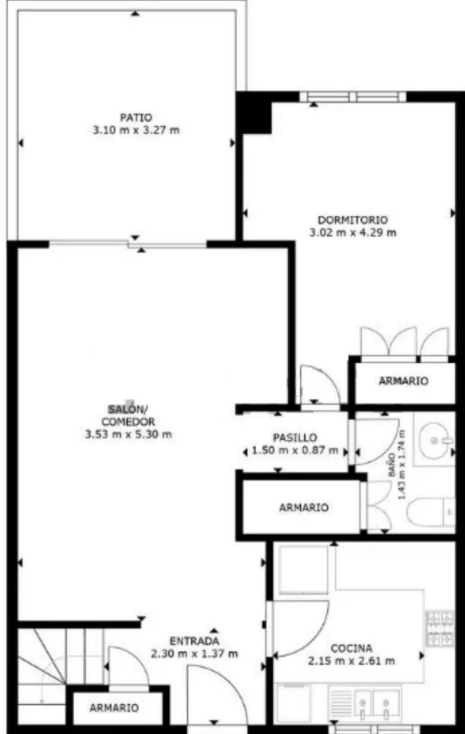








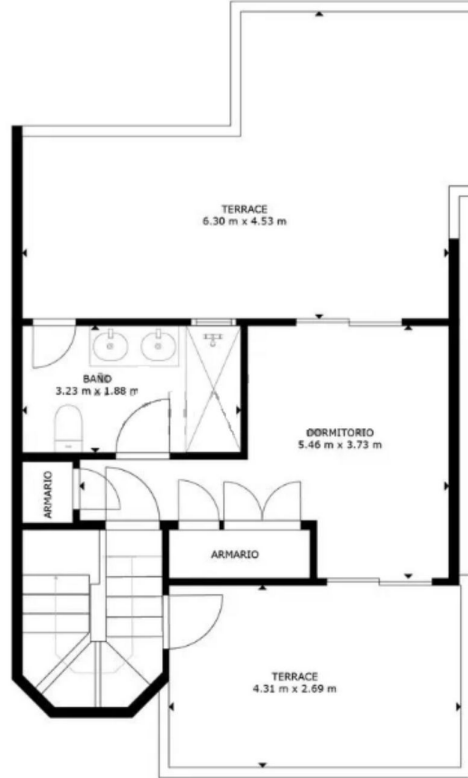




PLANTA 1

ÁREA INTERINA BRUTA
 PLANTA 1: 48 m², PLANTA 2: 27 m²
 TOTAL: 75 m²

ÁREAS EXCLUIDAS: PATIO: 10 m², TERRACE: 35 m²
 LOS TAMAÑOS Y LAS DIMENSIONES SON APROXIMADAS Y PUEDEN VARIAR EN ALGUNOS CASOS.



ÁREA INTERINA BRUTA
 PLANTA 1: 48 m², PLANTA 2: 27 m²
 TOTAL: 75 m²

ÁREAS EXCLUIDAS: PATIO: 10 m², TERRACE: 35 m²
 LOS TAMAÑOS Y LAS DIMENSIONES SON APROXIMADAS Y PUEDEN VARIAR EN ALGUNOS CASOS.











































