

Sales - House - Estepona

2.750.000€

Estepona

House



6



5



520 m2



5900 m2

Exclusive estate close to the centre and beach of Estepona. Situated in the privileged setting of Estepona, in Reinoso just 2 km from the centre and beach, this extraordinary property combines privacy, spaciousness, and a comprehensive range of leisure and wellness features on a 5,860 m² plot. The main residence boasts a built area of 1,096 m², laid out in a functional and elegant manner. It features four spacious bedrooms, as well as an office that can be converted into a fifth bedroom, in addition to four full bathrooms and a guest toilet. The day area offers a main living room and a cosy TV lounge, as well as an independent dining room. The fully equipped kitchen includes a breakfast area and a laundry room, designed for maximum daily comfort. There is also a spectacular wine cellar designed for entertaining, equipped with a bar and a dedicated space for wine storage. The property incorporates a full wellness area with a private spa, including a sauna, whirlpool bath, hydromassage shower, and gymnasium. Outdoors, the spaces are carefully designed for relaxation and enjoyment: a porch and solarium next to the swimming pool create an ideal setting for leisure and rest. The estate also features a garage for two vehicles with automated access. Among its exclusive features, highlights include: • An elevator with capacity for four people • 110 m³ swimming pool with a stunning 3-metre-high waterfall • Private tennis court • Equestrian area with changing rooms, two horse stalls, and storage • Main entrance with automatic gate • 150-metre printed concrete walkway, decorated with pergolas covered with blue wisteria, wooden benches, and a semicircular fountain with 16 jets The estate is equipped for efficient maintenance of its extensive green areas, with a 100,000-litre irrigation water tank and its own well with a submersible pump. The landscaping includes an elegant French garden with rose bushes, palm trees, ornamental fountain, and ceramic benches, as well as two orchards: one with a variety of fruit trees and another with approximately 70 navelate orange trees. The entire property is completed by illuminated gardens, enhancing the beauty of the estate also at night.

Setting

- ✓ Town
- ✓ Country
- ✓ Close To Shops
- ✓ Close To Sea
- ✓ Close To Town

Climate Control

- ✓ Air Conditioning
- ✓ Fireplace

Kitchen

- ✓ Fully Fitted

Orientation

- ✓ South

Views

- ✓ Sea
- ✓ Mountain
- ✓ Country
- ✓ Panoramic
- ✓ Pool

Garden

- ✓ Private
- ✓ Landscaped

Condition

- ✓ Good

Features

- ✓ Covered Terrace
- ✓ Lift
- ✓ Fitted Wardrobes
- ✓ Private Terrace
- ✓ Solarium
- ✓ Satellite TV
- ✓ WiFi
- ✓ Gym
- ✓ Sauna
- ✓ Games Room
- ✓ Tennis Court
- ✓ Guest Apartment
- ✓ Storage Room
- ✓ Utility Room
- ✓ Ensuite Bathroom
- ✓ Jacuzzi
- ✓ Bar
- ✓ Barbeque
- ✓ Double Glazing
- ✓ Basement
- ✓ Fiber Optic

Parking

- ✓ Garage
- ✓ Covered
- ✓ More Than One

Pool

- ✓ Private

Furniture

- ✓ Fully Furnished

Utilities

- ✓ Electricity
- ✓ Drinkable Water
- ✓ Telephone

























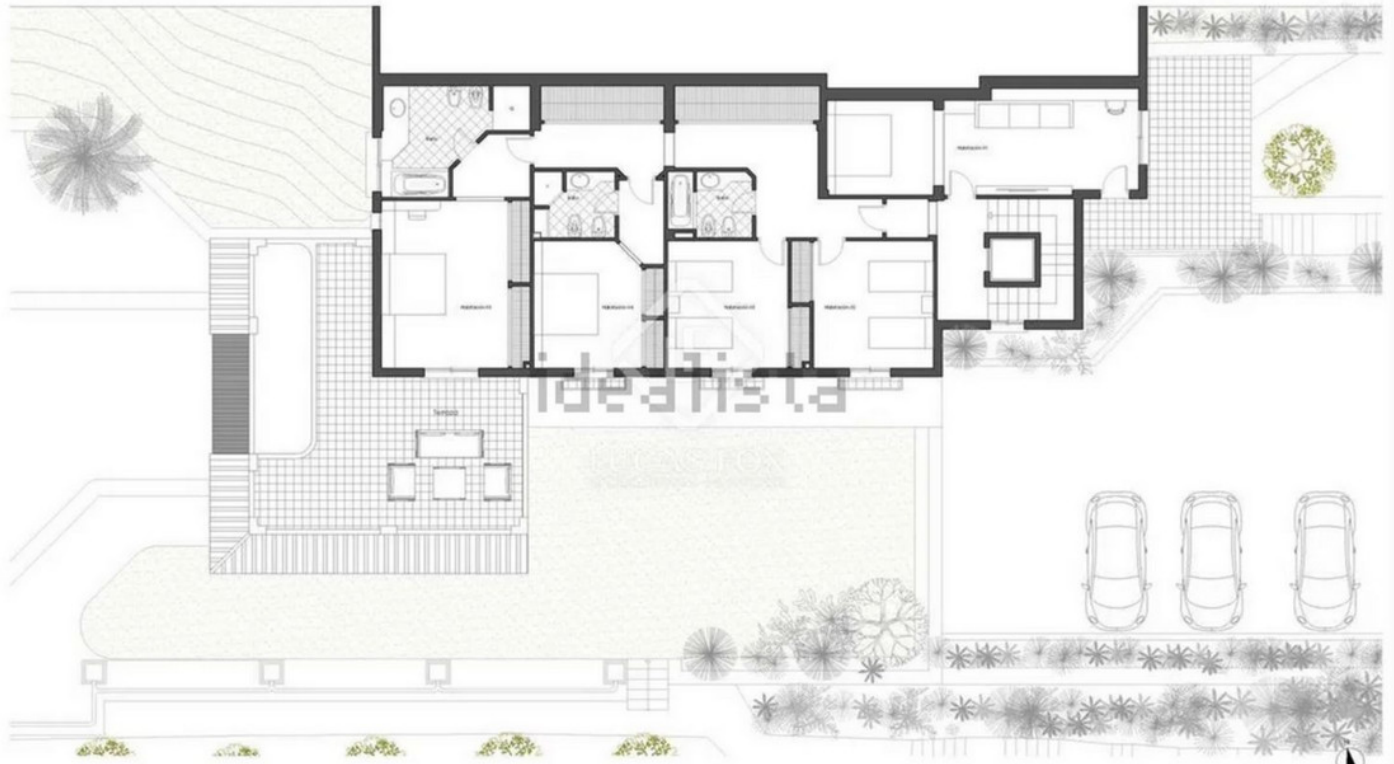




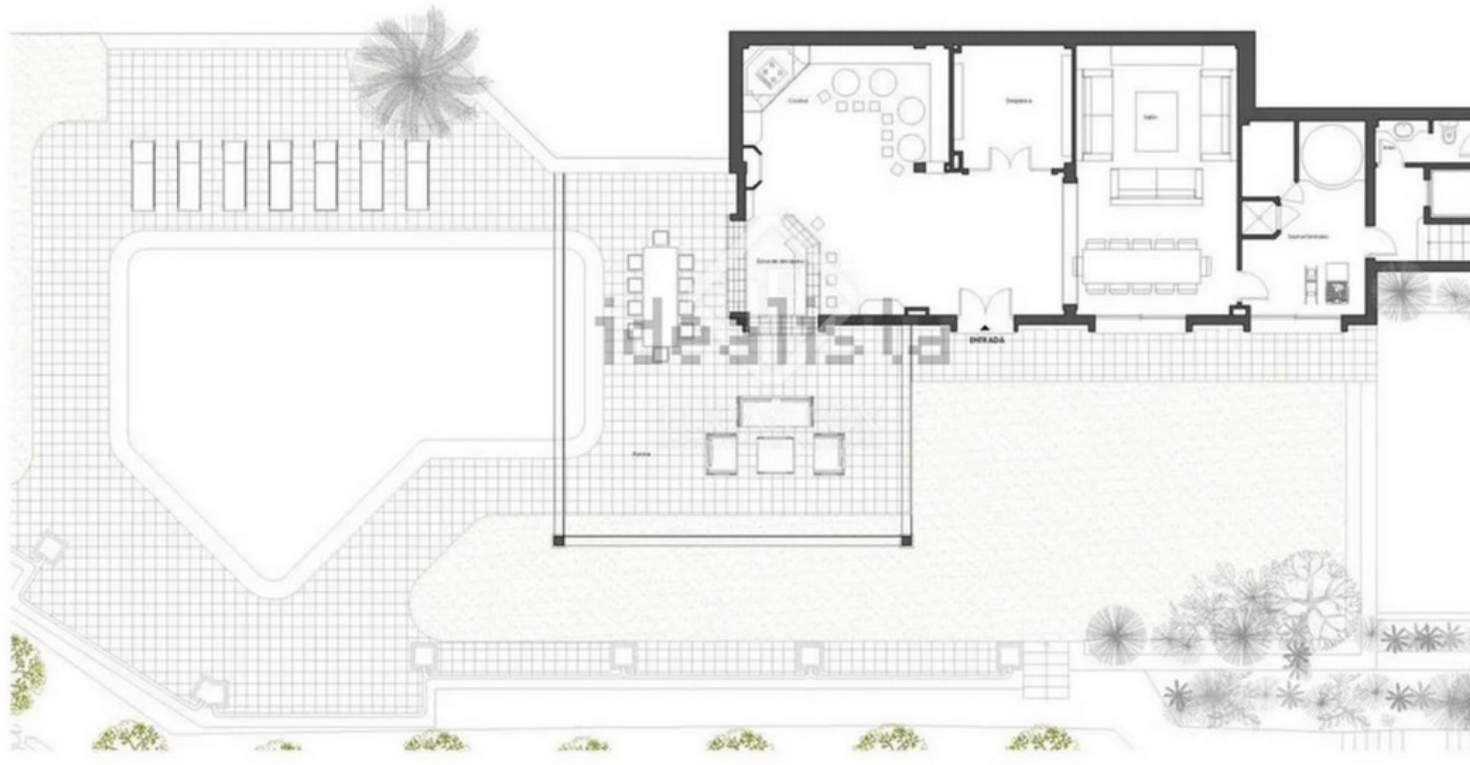








0 1 2 3 4 5 6 7 8 9 10m
PLANO: Planta Habitaciones
 14/06/2018
 ESCALA
 1:100



0 1 2 3 4 5 6 7 8 9 10m
PLANO: Planta Bodega/Pischa
 14/06/2018
 ESCALA