

Sales - Plot - Estepona

595.000€

Estepona

Plot



500 m2

Exceptional Development Opportunity | Contemporary Villa Plot on the New Golden Mile|Estepona An outstanding opportunity to acquire a prime residential plot with contemporary villa project in the increasingly sought-after area of Llanos de La Boladilla, perfectly positioned on Estepona's prestigious New Golden Mile. Set within an emerging boutique residential enclave moments from the beach, this 500 m² urban plot offers the ideal canvas to create a stylish modern villa in one of the Costa del Sol's fastest-growing coastal locations. The plot is sold with a contemporary architectural concept for a detached villa with private pool, generous terraces, landscaped gardens and private parking. The proposed design blends clean modern architecture with bright open-plan living spaces, floor-to-ceiling glazing and seamless indoor-outdoor living ,perfectly suited to the Costa del Sol lifestyle. The planned accommodation includes spacious living and dining areas, a contemporary kitchen, multiple bedroom suites, expansive terraces and a large lower-ground level with flexibility for additional living space, gym, cinema room or entertainment area. Importantly, the surrounding urbanisation has recently received partial reception of the infrastructure works by Estepona Town Hall, significantly enhancing the attractiveness and future potential of the area. Located just minutes from beaches, golf courses, international schools, restaurants and the centres of Estepona, Marbella and Puerto Banús, this is a rare opportunity for investors, developers or private buyers seeking to build a contemporary home in a prime coastal setting. A superb opportunity combining location, future potential and modern villa design on the New Golden Mile.

Setting

- ✓ Close To Shops
- ✓ Close To Town
- ✓ Urbanisation

Orientation

- ✓ South

Condition

- ✓ New Construction

Category

- ✓ Holiday Homes
- ✓ Investment
- ✓ Resale
- ✓ With Planning Permission



SUPERFICIE PARCELA : 500,00 m²
TIPOLOGÍA : VIVIENDA UNIFAMILIAR EXENTA
SUP. EDIFICABLE : 165,00 m²
OCUPACIÓN : 150,00 m²
ALTURA : 2 PLANTAS

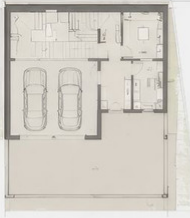






CONTEMPORARY VILLA PROJECT

PLOT SIZE	500.00 m ²
VILLA TYPE	DETACHED (EXENTA)
BUILDABLE AREA	165.00 m ²
OCCUPANCY	150.00 m ²
FLOORS	2 FLOORS + BASEMENT



BASEMENT PLAN



GROUND FLOOR PLAN



FIRST FLOOR PLAN



