

Sales - House - Torrequebrada

1.830.000€

Torrequebrada

House



5



6



390 m2

Modern totally renovated Boho Ibiza villa in Torrequebrada - Calle Finlandia, one of the most sought-after residential areas of Benalmádena, just 5 minutes from the beach, golf course, train station and all amenities. South-facing property with sea views, outstanding natural light and spacious open-plan interiors. Sold fully furnished and equipped with high-quality furniture and premium appliances, ready to move into. Built area of 390 m² on a 1,900 m² plot, distributed over 3 floors with 5 large bedrooms, 6 bathrooms, 2 bright living areas with open-plan kitchens, independent guest apartment, large basement and storage room. Outdoor areas include a private swimming pool, spacious terraces, covered parking and a mature garden with fruit trees, offering privacy and the fresh atmosphere of the nearby golf course throughout the summer. Ideal as a luxury family home, holiday property or high-end investment on the Costa del Sol.

Setting

- ✓ Frontline Golf
- ✓ Close To Golf
- ✓ Close To Town
- ✓ Close To Schools

Climate Control

- ✓ Air Conditioning
- ✓ Hot A/C
- ✓ Cold A/C
- ✓ Central Heating

Kitchen

- ✓ Fully Fitted

Utilities

- ✓ Electricity
- ✓ Drinkable Water

Orientation

- ✓ South East

Views

- ✓ Sea
- ✓ Mountain
- ✓ Golf
- ✓ Panoramic

Garden

- ✓ Private

Category

- ✓ Distressed
- ✓ Golf
- ✓ Holiday Homes
- ✓ Luxury

Condition

- ✓ Excellent

Features

- ✓ Covered Terrace
- ✓ Fitted Wardrobes
- ✓ Private Terrace
- ✓ Solarium
- ✓ Gym
- ✓ Games Room
- ✓ Guest Apartment
- ✓ Guest House
- ✓ Storage Room
- ✓ Access for people with reduced mobility
- ✓ Barbeque
- ✓ Double Glazing
- ✓ Domotics
- ✓ Staff Accommodation

Security

- ✓ Alarm System
- ✓ Safe

Pool

- ✓ Private

Furniture

- ✓ Fully Furnished

Parking

- ✓ Garage



































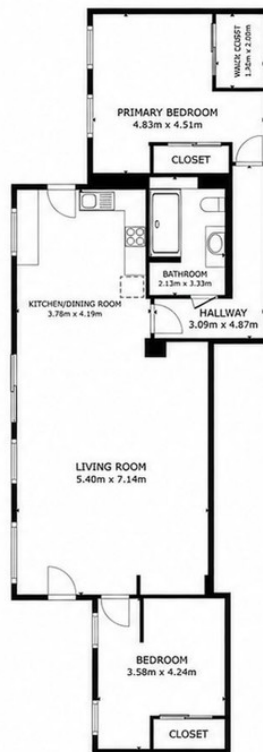
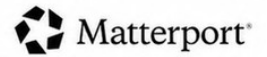






FLOOR 1

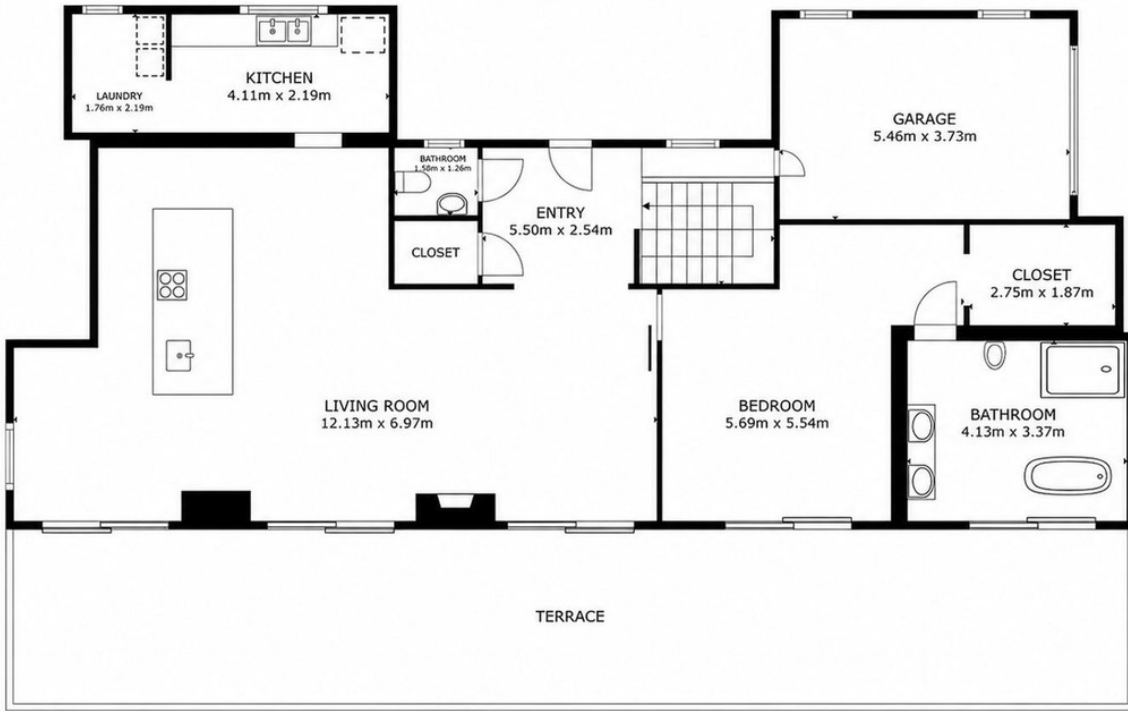
GROSS INTERNAL AREA
 FLOOR 1 93.0 m² FLOOR 2 145.9 m²
 EXCLUDED AREAS : BALCONY 50.4 m² GARAGE 20.4 m² TERRACE 67.5 m²
 TOTAL : 238.9 m²
 SIZES AND DIMENSIONS ARE APPROXIMATE, ACTUAL MAY VARY.



FLOOR PLAN

GROSS INTERNAL AREA
 FLOOR PLAN 107.8 m²
 TOTAL : 107.8 m²
 SIZES AND DIMENSIONS ARE APPROXIMATE, ACTUAL MAY VARY.





FLOOR 2

GROSS INTERNAL AREA
 FLOOR 1 93.0 m² FLOOR 2 145.9 m²
 EXCLUDED AREAS : BALCONY 50.4 m² GARAGE 20.4 m² TERRACE 67.5 m²
 TOTAL : 238.9 m²
 SIZES AND DIMENSIONS ARE APPROXIMATE, ACTUAL MAY VARY.

