

## Sales - House - El Chaparral

# 1.250.000€

El Chaparral

House



4



4



159 m2



457 m2

Are you dreaming of a home where sleek design, tranquility, and luxury come together in perfect harmony? This stunning townhouse is part of an exclusive new development in El Chaparral, scheduled for completion in Q1 2027. Located in the heart of Mijas Golf Valley, just minutes from the beach and with the golf club right around the corner, this is a unique opportunity to secure a modern home before the project is completed. Here, architecture and nature meet in perfect harmony. Large panoramic windows let in the light and open up to a fantastic view of the Mediterranean, while the elegant living spaces create a warm and inviting atmosphere. Every detail is carefully considered, from material choices to layout, resulting in a home that is both highly functional and aesthetically superior. The townhouse offers four spacious bedrooms and stylish bathrooms with underfloor heating, collectively creating an oasis of comfort and well-being. The open kitchen and living room form the natural gathering point of the home, where design and quality go hand in hand. Outdoor living is equally impressive. The large terrace and private garden invite relaxation, al fresco dining, and long, sunny days. There is the possibility to add a private pool and create your very own sanctuary. As an owner, you will have access to exclusive resort-style communal facilities: swimming pools with panoramic views, a fitness center, sauna, Turkish bath, social areas, and coworking facilities - all designed to add a touch of luxury to everyday life. You are surrounded by nature, golf, and some of the most beautiful beaches on the Costa del Sol. Please note: The images are from a show home. The layout is identical. The private pool shown is not included but can be added as an optional upgrade. The development is scheduled for completion in Q1 2027. Ideal Location: 25 minutes from Malaga Airport 10 minutes from Fuengirola Station 40 minutes from Malaga city centre 23 minutes from Marbella 30 minutes from Puerto Banús Contact us for more information and to secure your place in this exclusive development.

### Setting

- ✓ Frontline Golf
- ✓ Beachside
- ✓ Close To Golf
- ✓ Close To Shops
- ✓ Close To Sea
- ✓ Close To Town

### Climate Control

- ✓ Air Conditioning
- ✓ Central Heating
- ✓ U/F/H Bathrooms

### Garden

- ✓ Private

### Orientation

- ✓ South East

### Views

- ✓ Sea
- ✓ Mountain
- ✓ Golf
- ✓ Panoramic
- ✓ Garden
- ✓ Pool
- ✓ Urban

### Security

- ✓ Gated Complex
- ✓ Electric Blinds
- ✓ Alarm System
- ✓ 24 Hour Security

### Condition

- ✓ Excellent

### Features

- ✓ Covered Terrace
- ✓ Fitted Wardrobes
- ✓ Private Terrace
- ✓ WiFi
- ✓ Gym
- ✓ Marble Flooring
- ✓ Double Glazing
- ✓ Basement
- ✓ Fiber Optic

### Parking

- ✓ More Than One
- ✓ Private

### Pool

- ✓ Communal

### Furniture

- ✓ Not Furnished

### Category

- ✓ Golf
- ✓ Luxury





















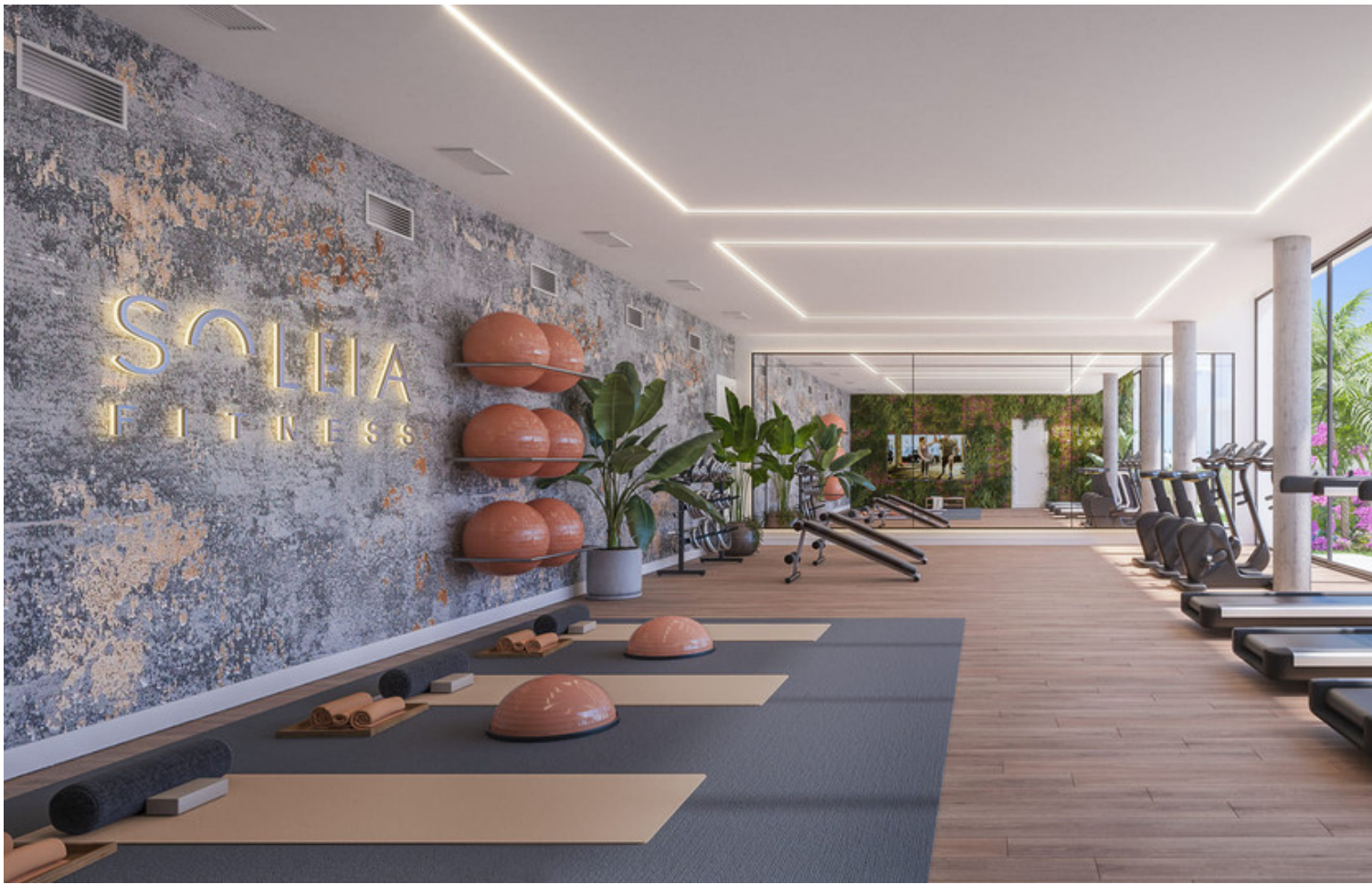










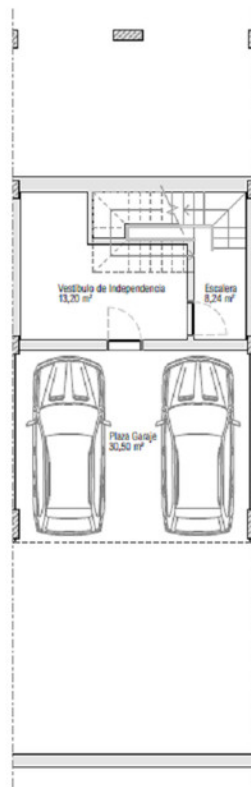


SOLEIA LIVING El Chaparral  
MÚJAS (MÁLAGA)

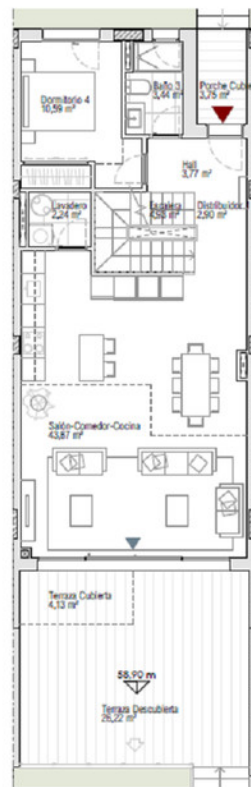
**VIVIENDA 03**  
TIPO A3  
4 DORMITORIOS

SUPERFICIES

Parcela Privativa	175,36 m <sup>2</sup>
Jardín	54,01 m <sup>2</sup>
Superficie Construida Vivienda	158,31 m <sup>2</sup>
Superficie Construida Sótano	58,94 m <sup>2</sup>
Superficie Construida Terrazas	42,03 m <sup>2</sup>
<b>Construida Total</b>	<b>259,28 m<sup>2</sup></b>
Superficies BOJA	
Superficie BOJA Útil	145,53 m <sup>2</sup>
Superficie BOJA Construida	174,14 m <sup>2</sup>



PLANTA SÓTANO



PLANTA BAJA



PLANTA ALTA



SOLEIA LIVING El Chapparal  
MIJAS (MÁLAGA)

## VIVIENDA 04

TIPO A3  
4 DORMITORIOS

### SUPERFICIES

Parcela Privativa	174,28 m <sup>2</sup>
Jardín	54,93 m <sup>2</sup>
Superficie Construida Vivienda	158,31 m <sup>2</sup>
Superficie Construida Sótano	38,94 m <sup>2</sup>
Superficie Construida Terrazas	42,03 m <sup>2</sup>
<b>Construida Total</b>	<b>239,28 m<sup>2</sup></b>
<b>Superficies BOJA</b>	
Superficie BOJA Util	145,83 m <sup>2</sup>
Superficie BOJA Construida	174,14 m <sup>2</sup>

