

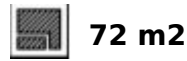
Sales - Apartment - Benalmadena

540.000€

Benalmadena

Apartment

Community: 1,368 EUR / year



Stunning Frontline Sea View Apartment - Benalmádena Costa Exceptional opportunity to acquire a spacious 2-bedroom apartment with breathtaking, uninterrupted panoramic sea views in one of the most desirable areas of Benalmádena Costa. This bright elevated ground floor apartment offers 72 m² built area plus an impressive 40 m² private terrace, perfectly positioned to enjoy spectacular frontline views of the Mediterranean coastline. The generous covered terrace provides the ideal setting for outdoor dining, relaxing and enjoying the sea breeze all year round. The property features 2 spacious bedrooms and 2 bathrooms, a comfortable living-dining area with direct access to the terrace, and a fully fitted independent kitchen. Thanks to its elevated position within the complex, the apartment enjoys privacy and open sea views while maintaining easy access. Located in a well-maintained gated beachfront urbanisation with communal swimming pool, landscaped gardens and direct access to the promenade and beach. The property also includes underground parking and storage room. Within walking distance to restaurants, shops, public transport and all amenities. An ideal holiday home, rental investment or permanent residence with true panoramic sea views.

Setting

- ✓ Beachside
- ✓ Close To Sea
- ✓ Close To Town
- ✓ Urbanisation

Climate Control

- ✓ Air Conditioning
- ✓ Hot A/C
- ✓ Cold A/C

Kitchen

- ✓ Fully Fitted

Utilities

- ✓ Electricity
- ✓ Drinkable Water

Orientation

- ✓ South

Views

- ✓ Sea
- ✓ Beach
- ✓ Panoramic

Garden

- ✓ Communal

Category

- ✓ Holiday Homes
- ✓ Resale

Condition

- ✓ Good

Features

- ✓ Covered Terrace
- ✓ Lift
- ✓ Fitted Wardrobes
- ✓ Private Terrace

Security

- ✓ Gated Complex

Pool

- ✓ Communal

Furniture

- ✓ Fully Furnished

Parking

- ✓ Underground
- ✓ Covered
- ✓ Private





















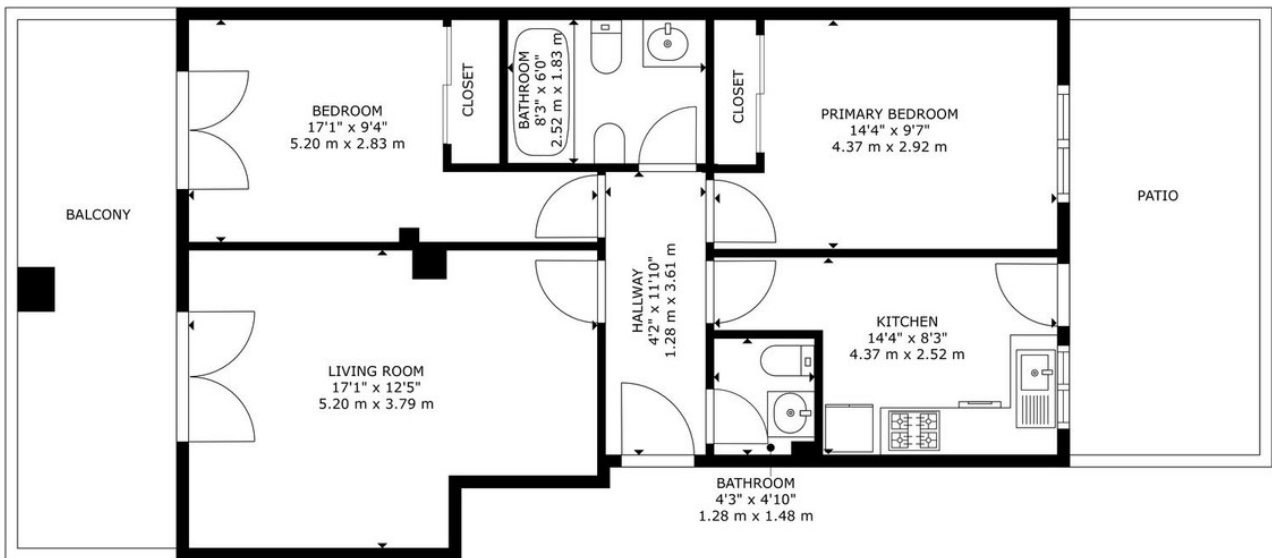












FLOOR PLAN

GROSS INTERNAL AREA
 FLOOR PLAN: 707 sq. ft, 65 m²
 SIZES AND DIMENSIONS ARE APPROXIMATE, ACTUAL MAY VARY.