

Sales - Apartment - Benalmadena Costa

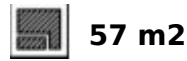
364.000€

Benalmadena Costa

Apartment

Community: 1,224 EUR / year IBI: 125 EUR / year

Rubbish: 54 EUR / year



Viewings available: May 27th to June 5th June 17th to July 1st July 7th to July 21st A very cozy 2-bedroom top floor (2nd floor) apartment with a living room and bathroom, located in the heart of Benalmádena in the sought-after Boulevard area, right next to the famous Paloma Park. The apartment is south-facing, enjoying sunshine all day, with an unobstructed private terrace that is not overlooked. Conveniently located close to everything you need. The gated community features well-maintained gardens and a swimming pool, and is only a few minutes from the beaches of Benalmádena Costa. The price includes a private closed garage parking space with an automatic door. Guests can also reserve the BBQ area by the pool, which is equipped with electricity. The property has both a Tourist Licence and an NRA registration number. There is currently no elevator in the building, but the community is in the process of installing one for this apartment building. Distances: Next to Paloma Park Train station: 600 m Beach: 750 m Airport: 15 km Bus stop: right outside the building Corner shops and supermarkets: on your doorstep Pharmacy: directly across the street

Setting

- ✓ Close To Shops
- ✓ Close To Sea
- ✓ Close To Town
- ✓ Close To Schools

Views

- ✓ Panoramic
- ✓ Urban
- ✓ Street

Orientation

- ✓ South

Features

- ✓ Near Transport

Condition

- ✓ Excellent

Garden

- ✓ Communal

Pool

- ✓ Communal

Parking

- ✓ Private















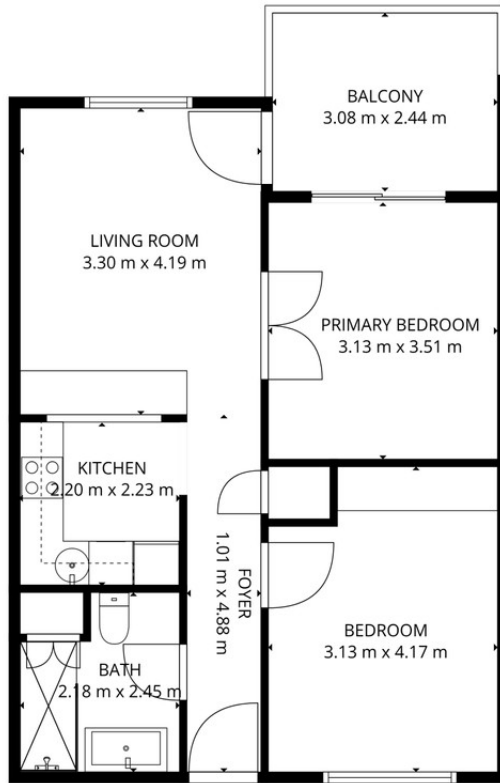












TOTAL: 55 m²

1st floor: 55 m²

EXCLUDED AREAS: BALCONY: 8 m², WALLS: 5 m²

FLOOR PLAN CREATED BY CUBICASA APP. MEASUREMENTS DEEMED HIGHLY RELIABLE BUT NOT GUARANTEED.