

Sales - House - Puerto Banús

2.395.000€

Puerto Banús

House

Community: 2,304 EUR / year IBI: 2,197 EUR / year

Rubbish: 93 EUR / year



7



3.5



401 m2



600 m2

Beautifully refurbished, this spacious 7-bedroom, 3.5-bathroom semi-detached villa is ideally situated just 50 meters from the beach and a short stroll from Puerto Banús, luxury boutiques, fine dining, and essential amenities. An exceptional opportunity for a holiday retreat or a high-yield investment property. Designed for seamless indoor-outdoor living, the property features a private heated swimming pool, a beautifully landscaped garden, and an outdoor gym, allowing you to stay active in the fresh sea air. A home cinema provides the perfect entertainment space, while a carport for two cars ensures secure parking. In addition to its proximity to Puerto Banús, the villa is within walking distance of the stunning San Pedro beach walk, a lively promenade lined with charming restaurants and cafés, perfect for seaside dining and sunset strolls. With a proven track record as a high-performing short-term rental, this villa generates an impressive €8,400 per week in low season and up to €10,500 per week in high season, making it an exceptional investment opportunity. Property Layout Ground floor: 1 bedroom, 1 bathroom, living room, and kitchen. First floor: Master bedroom with en-suite bathroom, plus 2 additional bedrooms sharing a large bathroom. Third floor: 1 bedroom that can also be used as an office, along with a toilet. Basement: Home cinema and 2 additional bedrooms. Don't miss your chance to own this prime beachside property in one of Marbella's most sought-after locations. Contact us today to arrange a private viewing! LET US MOVE YOU!

Setting

- ✓ Town
- ✓ Beachside
- ✓ Port
- ✓ Close To Port
- ✓ Close To Shops
- ✓ Close To Sea
- ✓ Close To Town
- ✓ Close To Schools
- ✓ Close To Forest
- ✓ Close To Marina
- ✓ Urbanisation

Climate Control

- ✓ Air Conditioning
- ✓ Pre Installed A/C
- ✓ Hot A/C
- ✓ Cold A/C
- ✓ Central Heating
- ✓ Fireplace

Kitchen

- ✓ Fully Fitted

Utilities

- ✓ Electricity

Orientation

- ✓ East
- ✓ South East
- ✓ South
- ✓ South West
- ✓ West

Views

- ✓ Garden
- ✓ Pool

Garden

- ✓ Private

Category

- ✓ Bargain
- ✓ Beachfront
- ✓ Holiday Homes
- ✓ Investment
- ✓ Luxury
- ✓ Resale
- ✓ Contemporary

Condition

- ✓ Excellent

Features

- ✓ Covered Terrace
- ✓ Fitted Wardrobes
- ✓ Near Transport
- ✓ Private Terrace
- ✓ WiFi
- ✓ Gym
- ✓ Games Room
- ✓ Storage Room
- ✓ Utility Room
- ✓ Ensuite Bathroom
- ✓ Wood Flooring
- ✓ Marble Flooring
- ✓ Barbeque
- ✓ Double Glazing
- ✓ Basement
- ✓ Fiber Optic

Security

- ✓ Electric Blinds
- ✓ Alarm System
- ✓ Safe

Pool

- ✓ Private
- ✓ Heated

Furniture

- ✓ Fully Furnished

Parking

- ✓ Covered
- ✓ More Than One
- ✓ Private





































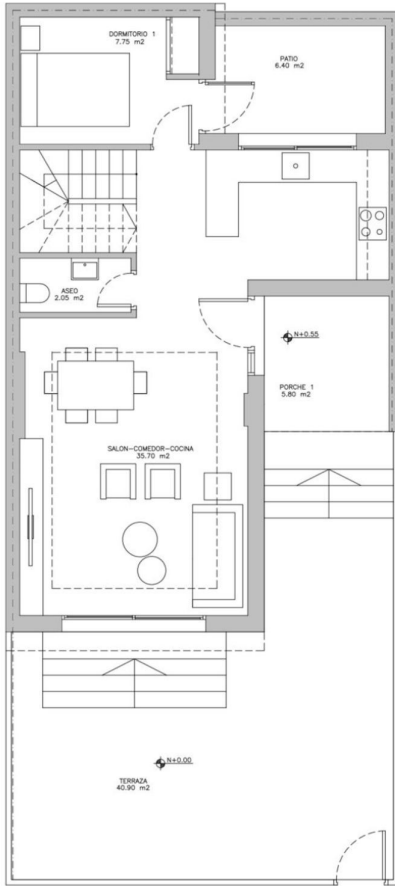












PLANTA BAJA REFORMADO
Sup.Construida: 58.20 m²
Sup.Porche: 5.80 m²