

## Sales - Apartment - Benalmadena Costa

# 399.950€

**Benalmadena Costa**

**Apartment**

**Community: 1,320 EUR / year IBI: 600 EUR / year**

**Rubbish: 172 EUR / year**



**2**



**2**



**85 m2**

EXCLUSIVE 2-BEDROOM APARTMENT WITH SEA VIEWS ON THE SECOND LINE OF THE BEACH. Discover this magnificent 2bedroom, 2bathroom (1 on suit) apartment located on the second line of the beach in the highly sought-after area of Benalmádena Costa. An ideal property both as a permanent residence, a holiday home, or an investment thanks to its excellent location and features. The property stands out for its location, spaciousness, and privacy, as well as a generous living room with a dining area that leads to a beautiful terrace with sea views. It also belongs to one of the most prestigious residential complexes in Benalmádena, known for its upkeep, maintenance, and excellent condition, allowing residents to enjoy a wonderful swimming pool with communal gardens. The property includes a large, enclosed underground garage, providing great convenience as well as additional storage space. Additionally, there is communal parking available, ideal for visitors of family and friends. A perfect opportunity to enjoy the quality of life on the Costa del Sol, with all services, shops, and transport links just a couple of minutes away. Don't miss the chance to be the first to view it! SHORT-TERM (TOURIST) RENTALS NOT PERMITTED Community fees: €110/month Property tax (IBI): €600/year Garbage collection: €172/year YOUR DREAM - OUR PASSION [www.cristihomes.com](http://www.cristihomes.com)

### Setting

- ✓ Close To Golf

### Views

- ✓ Mountain
- ✓ Panoramic

### Security

- ✓ Gated Complex

### Orientation

- ✓ South
- ✓ West

### Features

- ✓ Covered Terrace
- ✓ Lift
- ✓ Fitted Wardrobes
- ✓ Near Transport
- ✓ Private Terrace
- ✓ Satellite TV
- ✓ Storage Room
- ✓ Ensuite Bathroom
- ✓ Marble Flooring
- ✓ Fiber Optic

### Parking

- ✓ Underground
- ✓ Garage
- ✓ Open
- ✓ Private

### Pool

- ✓ Communal

### Furniture

- ✓ Fully Furnished

### Climate Control

- ✓ Air Conditioning
- ✓ Central Heating

### Garden

- ✓ Private



















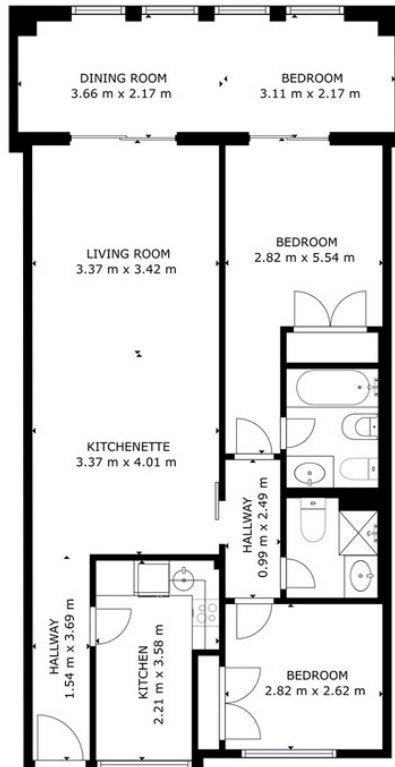












GROSS INTERNAL AREA  
 FLOOR 1: 85.27 m<sup>2</sup>  
 TOTAL: 85.27 m<sup>2</sup>  
 SIZES AND DIMENSIONS ARE APPROXIMATE, ACTUAL MAY VARY.

