

Long Term Rental - House - Benahavís

7.500€ / Month

Benahavís

House



4



4.5



410 m2



654 m2

Set within the exclusive Atalaya Fairways community of Benahavís, this stunning contemporary villa offers a rare combination of elegance, privacy, and breathtaking views. With 4 spacious bedrooms, all featuring luxurious en-suite bathrooms, plus an additional guest toilet, this home is designed to deliver the ultimate in comfort and style. Spanning 410 m² of interior space on a generous 654 m² plot, the property blends modern architecture with functional living, creating the perfect sanctuary for family life or holiday escapes. The interior comes fully furnished, showcasing a sleek, fully fitted kitchen, a bright dining room, and an inviting living area. Floor-to-ceiling glass doors flood the home with natural light while framing panoramic vistas of the sea, mountains, golf course, and surrounding greenery. Enjoy unobstructed views stretching across the coastline, a spectacular setting for entertaining or sunset cocktails. The villa's private outdoor spaces are equally impressive, featuring a pristine swimming pool, landscaped garden, and both covered and uncovered terraces for year-round enjoyment. Practical luxuries such as fitted wardrobes, a lift, and a private garage ensure a lifestyle of convenience and sophistication. Located in a boutique development of just 16 uniquely designed residences, Atalaya Fairways is a peaceful, low-density enclave surrounded by the lush fairways of Atalaya Golf Course. Its privileged position offers the perfect balance: tranquil natural surroundings yet only minutes from golden beaches, vibrant dining spots, world-class leisure facilities, and the highly regarded Atalaya International School, making it an ideal choice for families seeking quality education close to home. This property is in excellent condition, offering a move-in-ready opportunity to own a slice of contemporary luxury in one of the Costa del Sol's most sought-after addresses.

Setting

- ✓ Close To Golf
- ✓ Close To Schools

Climate Control

- ✓ Air Conditioning
- ✓ Fireplace

Garden

- ✓ Private

Orientation

- ✓ South

Views

- ✓ Sea
- ✓ Garden
- ✓ Pool

Security

- ✓ Gated Complex
- ✓ Entry Phone

Condition

- ✓ Excellent

Features

- ✓ Covered Terrace
- ✓ Lift
- ✓ Fitted Wardrobes
- ✓ Private Terrace
- ✓ WiFi
- ✓ Ensuite Bathroom
- ✓ Marble Flooring
- ✓ Domotics
- ✓ Basement
- ✓ Fiber Optic

Parking

- ✓ More Than One
- ✓ Private

Pool

- ✓ Private

Furniture

- ✓ Fully Furnished



































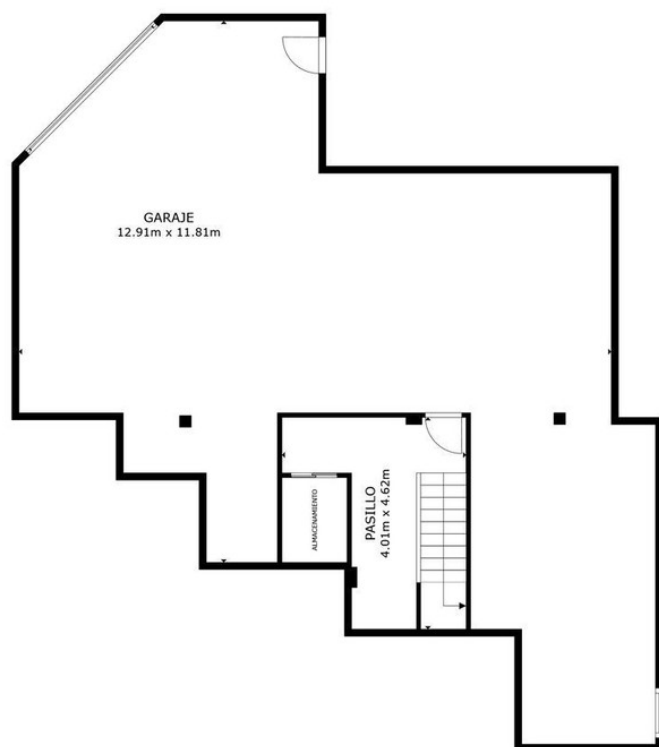
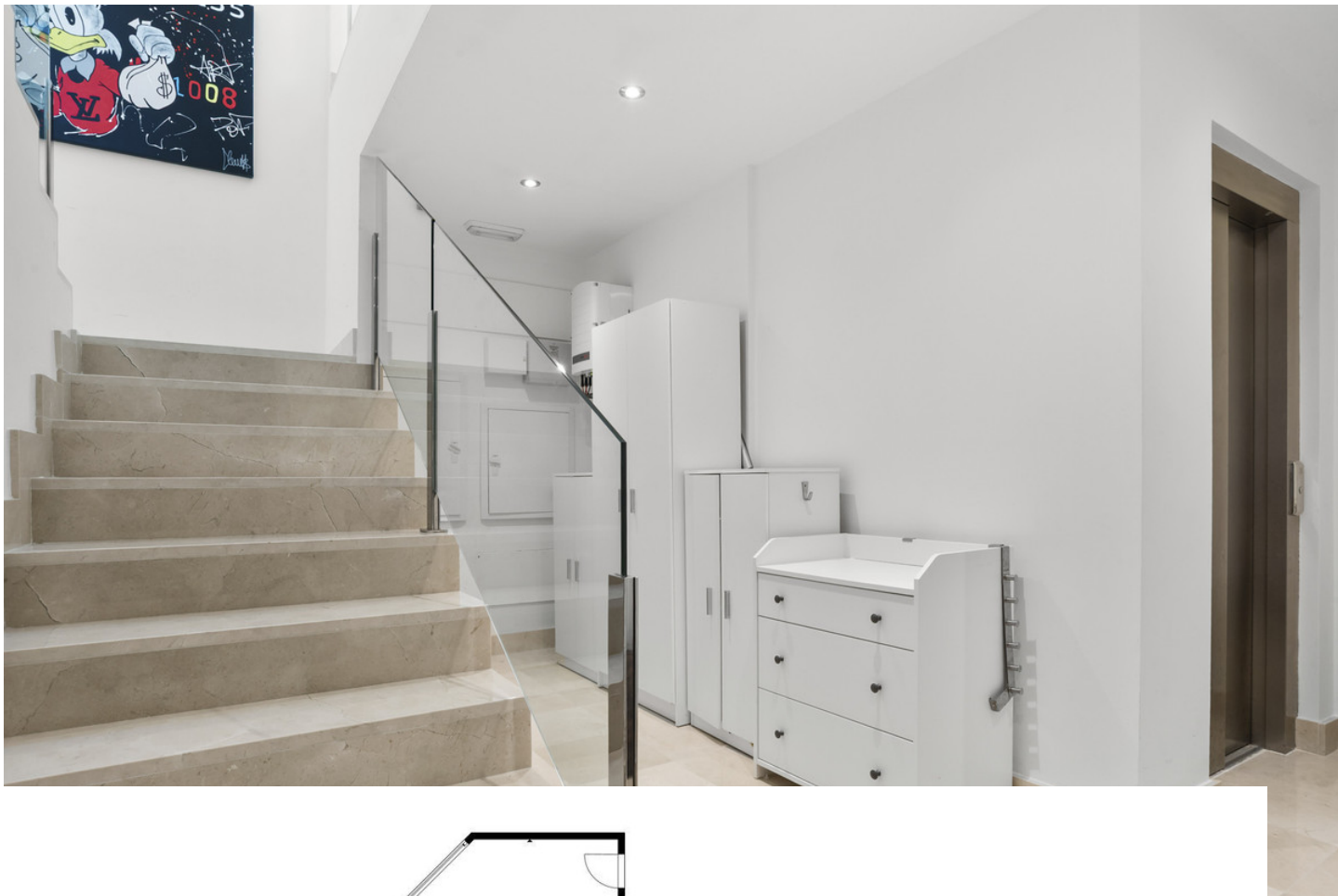








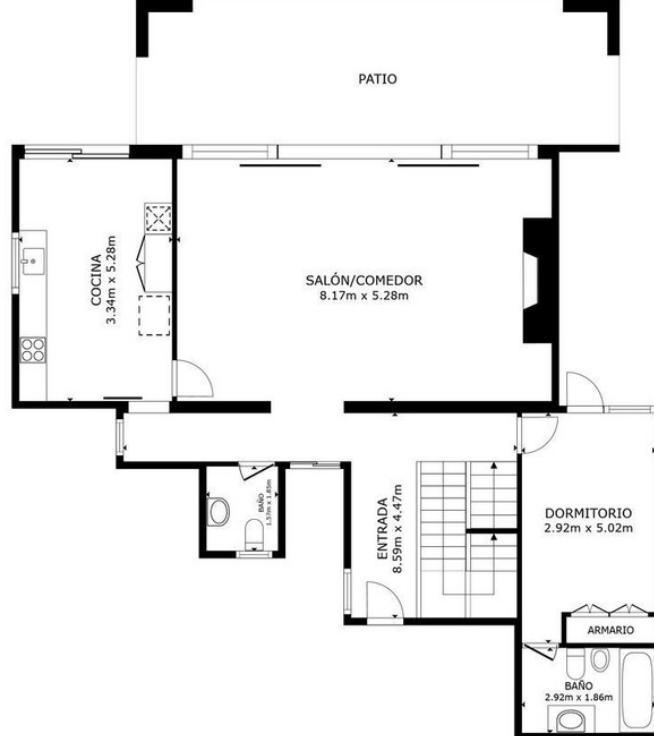




PLANTA 1

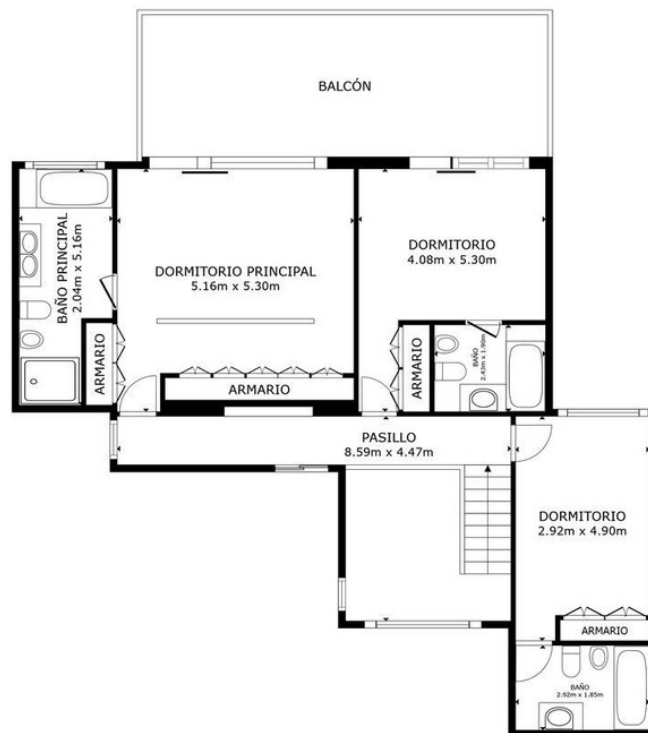
ÁREA INTERNA BRUTA
 PLANTA 1 17.5 m² PLANTA 2 109.0 m² PLANTA 3 103.3 m²
 ÁREAS EXCLUIDAS : GARAJE 117.7 m² PATIO 29.0 m² BALCÓN 27.5 m²
 TOTAL : 229.9 m²
 LOS TAMAÑOS Y LAS DIMENSIONES SON APROXIMADAS Y PUEDEN VARIAR EN ALGUNOS CASOS.





PLANTA 2

ÁREA INTERNA BRUTA
 PLANTA 1 17.5 m² PLANTA 2 109.0 m² PLANTA 3 103.3 m²
 ÁREAS EXCLUIDAS : GARAJE 117.7 m² PATIO 29.0 m² BALCÓN 27.5 m²
 TOTAL : 229.9 m²
 LOS TAMAÑOS Y LAS DIMENSIONES SON APROXIMADAS Y PUEDEN VARIAR EN ALGUNOS CASOS.



PLANTA 3

ÁREA INTERNA BRUTA
 PLANTA 1 17.5 m² PLANTA 2 109.0 m² PLANTA 3 103.3 m²
 ÁREAS EXCLUIDAS : GARAJE 117.7 m² PATIO 29.0 m² BALCÓN 27.5 m²
 TOTAL : 229.9 m²
 LOS TAMAÑOS Y LAS DIMENSIONES SON APROXIMADAS Y PUEDEN VARIAR EN ALGUNOS CASOS.

