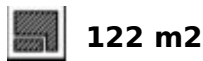


Long Term Rental - Commercial - Fuengirola

2.000€ / Month

Fuengirola

Commercial



Looking for a business on the Costa del Sol with a solid track record, loyal clientele, and a prime seafront location? Here it is! A fully operational ice cream shop is available for transfer, ready to operate from day one, with a loyal customer base and an unbeatable location on Paseo Marítimo Rey de España, Fuengirola. Prime Location: Right on the seafront, with high visibility and foot traffic, 3-minute walk to Plaza de la Constitución Surrounded by restaurants, bars, and hospitality businesses, creating a dynamic environment with a constant flow of customers Close to all the services in central Fuengirola What makes this business special? Fully furnished and equipped with high-quality materials Elegant and carefully designed décor, paying attention to every detail Varied gastronomic offerings: artisanal ice cream, coffee, natural juices, sweets, and tea pastries Established clientele, ideal to continue its success Recent Improvements (March 2025): Renovation of paint and drywall throughout Updated electrical installation Expansion of the restroom lobby Rear door completely restored Facilities and Documentation: Restrooms compliant with current regulations Valid licenses for premises and terrace 22 m² terrace with tables, chairs, and umbrellas Civil liability insurance Up-to-date documentation, free of encumbrances Complete inventory available Financial Conditions: Transfer price: €85000 (fully equipped and adapted) Monthly rent: €2,000 A secure investment with growth potential, perfect for entrepreneurs seeking a profitable, well-established, and recognized business on the Costa del Sol. If you're looking for a charming, profitable business that's ready to continue growing, this is your opportunity. Call us today and come see it in person!

Setting

- ✓ Beachside
- ✓ Close To Port
- ✓ Close To Shops
- ✓ Close To Schools

Furniture

- ✓ Fully Furnished

Climate Control

- ✓ Air Conditioning

Security

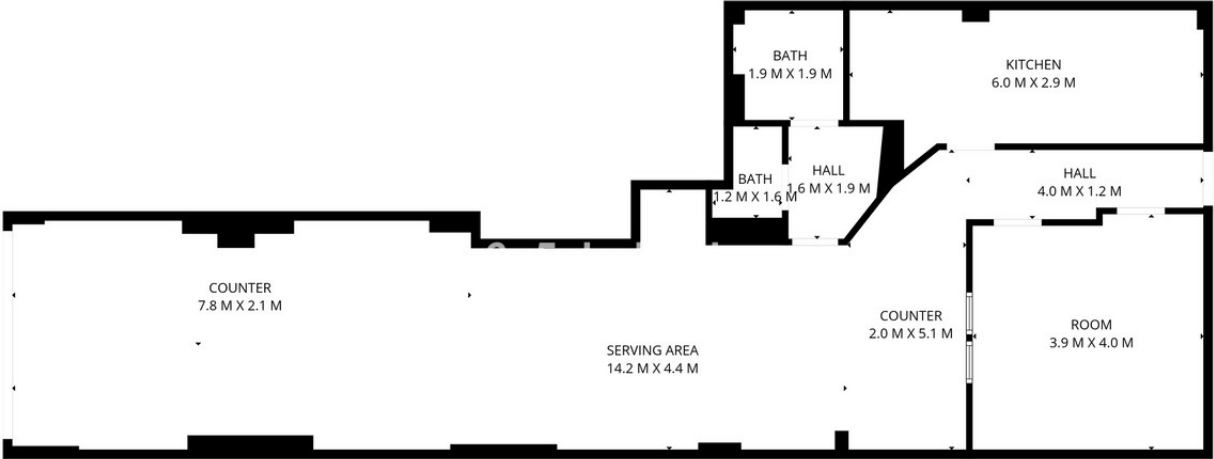
- ✓ Alarm System

Views

- ✓ Sea
- ✓ Urban

Features

- ✓ Near Transport
- ✓ Private Terrace



SIZES ARE APPROXIMATE, ACTUAL MAY VARY.































6u5vbuh1hk



6u5vbuh1hk













6u5vbuh1hk

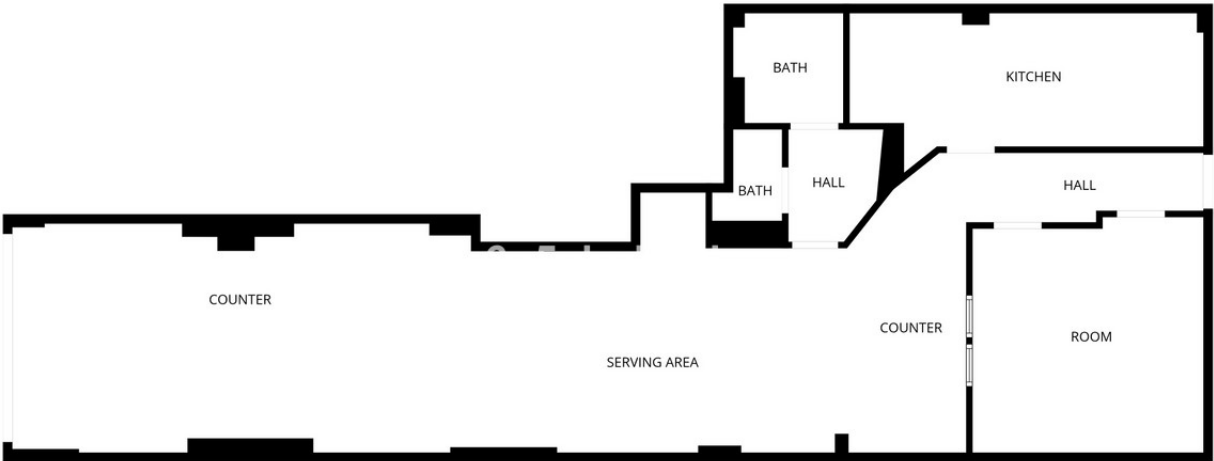


6u5vbuh1hk



6u5vbuh1hk





SIZES ARE APPROXIMATE, ACTUAL MAY VARY.

