

# Long Term Rental - Commercial - Marbella

## 5.500€ / Month

Marbella

Commercial



426 m2

Commercial premises in a highly trafficked location. It is street-level and 300 meters from the Quirónsalud Marbella Hospital. Previously operated as a branch of a renowned bank for a long period. The premises consist of two floors, with both the ground floor and basement totaling 213 sqm each, making a total of 426 sqm. Three shop window with a highly visible facade. Unique opportunity for various types of businesses. Contact us for more details and seize this opportunity!

### Setting

- ✓ Close To Port
- ✓ Close To Shops
- ✓ Close To Sea
- ✓ Close To Town

### Condition

- ✓ Good

### Features

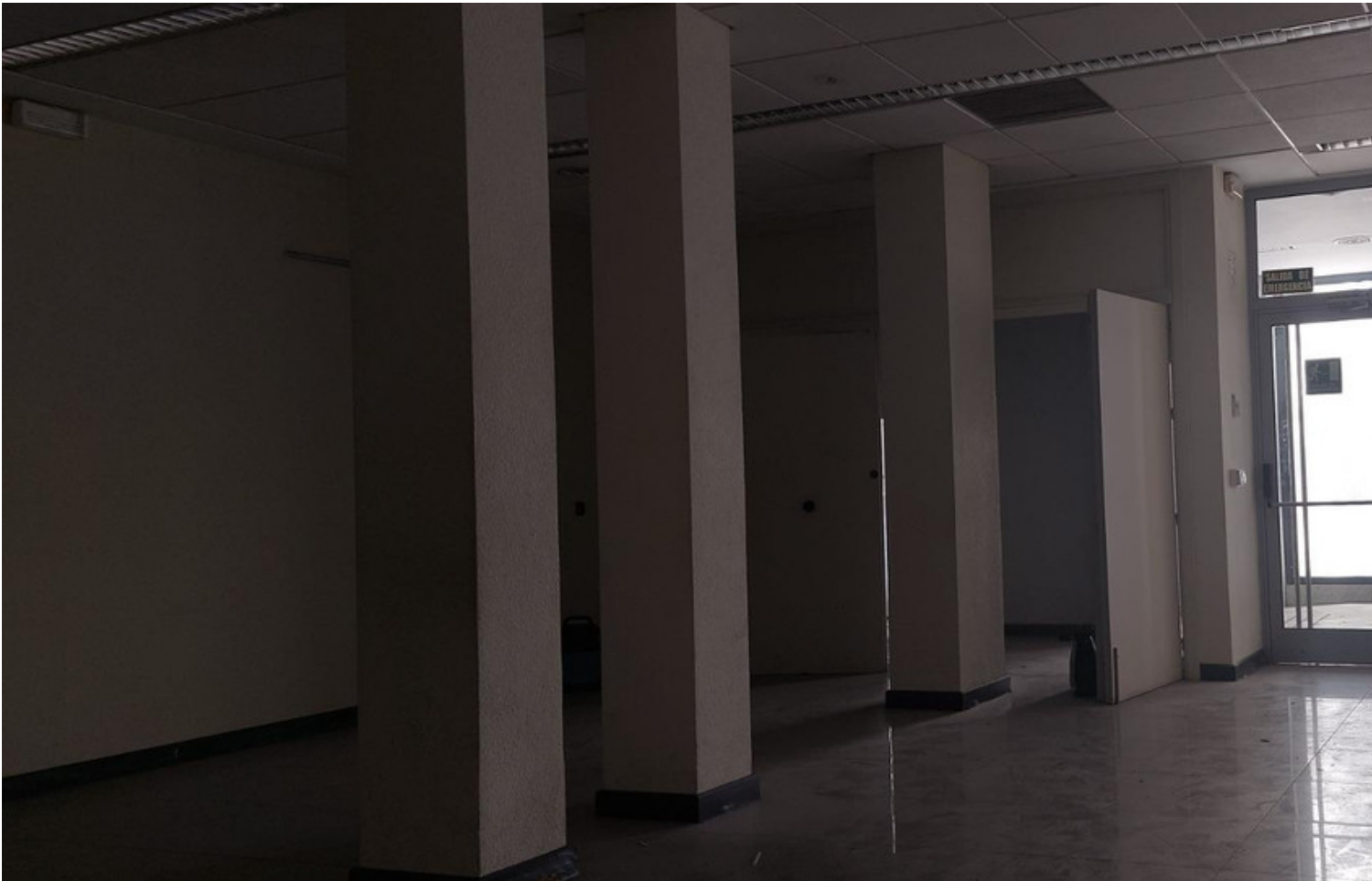
- ✓ Near Transport



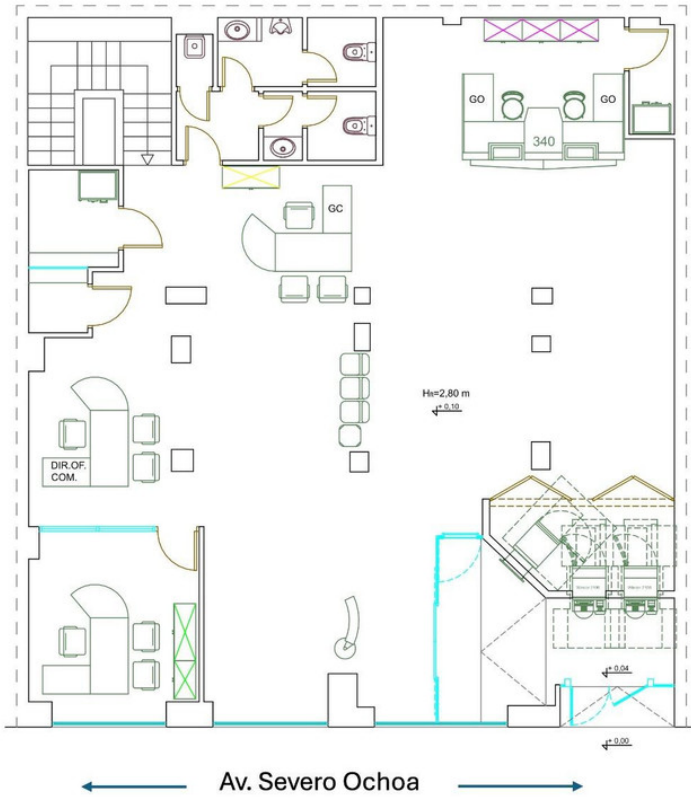












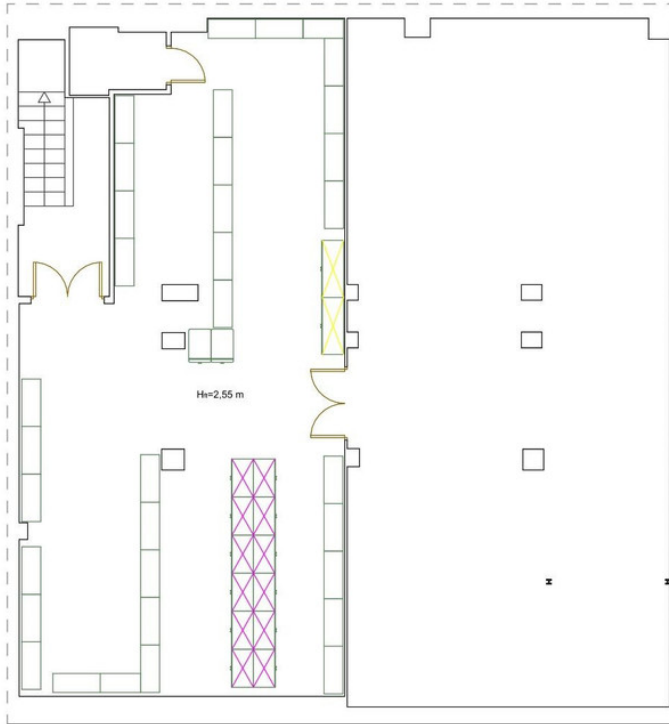
## PLANTA BAJA

### PLANTA BAJA

SUP. ÚTIL PLANTA	188,55
SUP. CONSTRUIDA	213,00

### SÓTANO

SUP. ÚTIL PLANTA	192,33
SUP. CONSTRUIDA	213,00



## SÓTANO

### SÓTANO

SUP. ÚTIL PLANTA	192.33
SUP. CONSTRUIDA	213.00

### PLANTA BAJA

SUP. ÚTIL PLANTA	188.55
SUP. CONSTRUIDA	213.00