

Long Term Rental - Apartment - Estepona

4.500€ / Month

Estepona

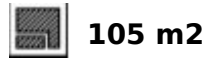
Apartment



2



2



105 m2

We are proud to present a truly rare offer: an exclusive beachfront penthouse, in the gated community of Punta Planta, Estepona. Front-row views over the Mediterranean sea, renovated in 2025. This exceptional 2 bedroom penthouse offers an unparalleled opportunity to experience Estepona from one of its most privileged and scenic locations. In a market where prime beachfront locations are increasingly scarce, the size of this property is truly remarkable, boasting 2 bedrooms with breathtaking panoramic views of the sea, Gibraltar, and the African coastline. This penthouse features a spacious master bedroom with an en-suite bathroom, a generously sized second bedroom, and a separate guest bathroom. The open-plan living and kitchen area is flooded with natural light, with floor-to-ceiling windows framing the spectacular sea views. It's a space designed for both everyday living and effortless entertaining. Step out onto the expansive 21 m² terrace, ideal for your morning coffee or evening glass of wine as the sun sets over the water. From a private staircase leads to the ultimate feature: a rooftop terrace of 67 m², a personal sky lounge complete with a fully equipped outdoor kitchen, space for dining, lounging, and sunbathing. With a jacuzzi, outdoor shower, and your dream rooftop setup, this space offers endless potential for relaxation and entertainment. Additional highlights include a private technical/storage room beneath the staircase, adding everyday functionality to luxury living. The location is unbeatable, with direct access from your garden to the beach and promenade, you're steps away from the sea. A shopping center is just a few minute's walk away, as well as public transport links. Estepona's charming old town, with its cafés, restaurants, shops, and local culture, is only a short stroll away. A truly unique frontline beach duplex penthouse.

Setting

- ✓ Beachfront
- ✓ Beachside
- ✓ Close To Shops
- ✓ Close To Sea
- ✓ Close To Town

Climate Control

- ✓ Air Conditioning

Kitchen

- ✓ Partially Fitted
- ✓ Kitchen-Lounge

Category

- ✓ Beachfront
- ✓ Luxury

Orientation

- ✓ South

Views

- ✓ Sea
- ✓ Panoramic
- ✓ Garden

Garden

- ✓ Communal

Condition

- ✓ Recently Renovated

Features

- ✓ Lift
- ✓ Near Transport
- ✓ Private Terrace
- ✓ Solarium
- ✓ Ensuite Bathroom
- ✓ Jacuzzi
- ✓ Barbeque
- ✓ Double Glazing

Security

- ✓ Gated Complex

Pool

- ✓ Communal

Furniture

- ✓ Fully Furnished

Parking

- ✓ Communal















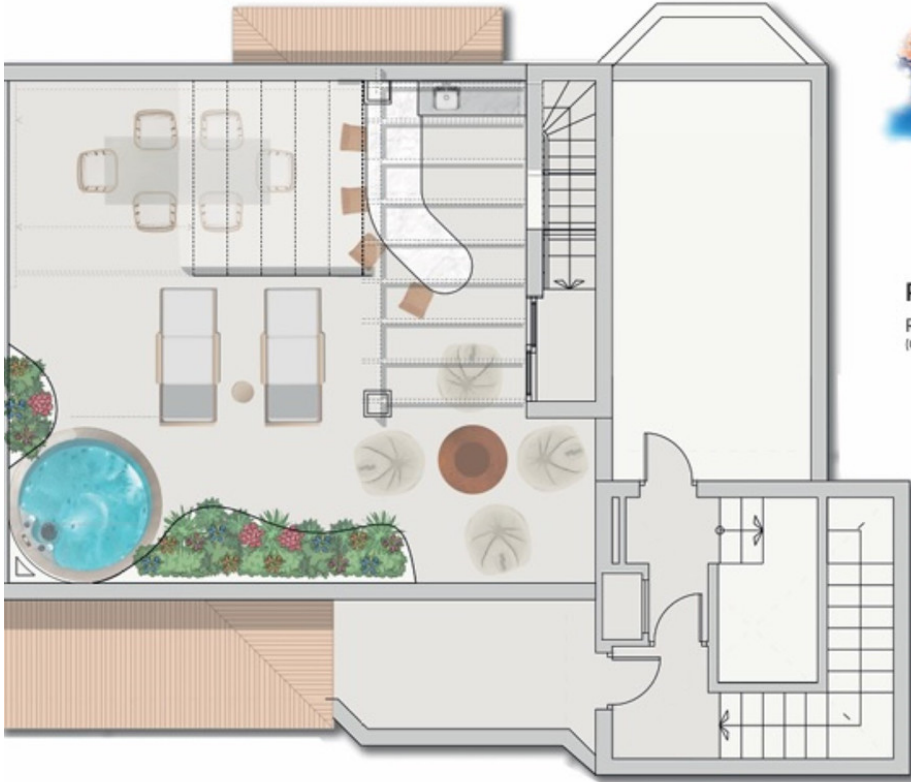












PENTHOUSE

Roof Terrace
(Optional Jacuzzi Location)

67 m²

ROOF TERRACE -