

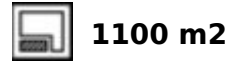
Ref.-ID: MIBGR2223614

Elviria

House

IBI: 1,831 EUR / year

Rubbish: 278 EUR / year



Rustic style villa distributed over three floors, located in a quiet area of Elviria. The property has four bedrooms, two bathrooms and a toilet, a fully fitted kitchen and a spacious living room. It is characterized by its high ceilings, its Andalusian style and the large basement with an area of 200 m2. It also has a garage with capacity for three cars.

Orientation

- ✓ South

Pool

- ✓ Private

Climate Control

- ✓ Pre Installed A/C
- ✓ Central Heating
- ✓ Fireplace

Views

- ✓ Mountain
- ✓ Country
- ✓ Garden
- ✓ Pool

Features

- ✓ Fitted Wardrobes
- ✓ Storage Room
- ✓ Utility Room
- ✓ Basement

Furniture

- ✓ Not Furnished
- ✓ Optional

Kitchen

- ✓ Fully Fitted

Garden

- ✓ Private
- ✓ Easy Maintenance

Security

- ✓ Alarm System

Parking

- ✓ Garage
- ✓ Covered
- ✓ More Than One

Utilities

- ✓ Electricity
- ✓ Drinkable Water
- ✓ Telephone
- ✓ Gas

Category

- ✓ Reduced













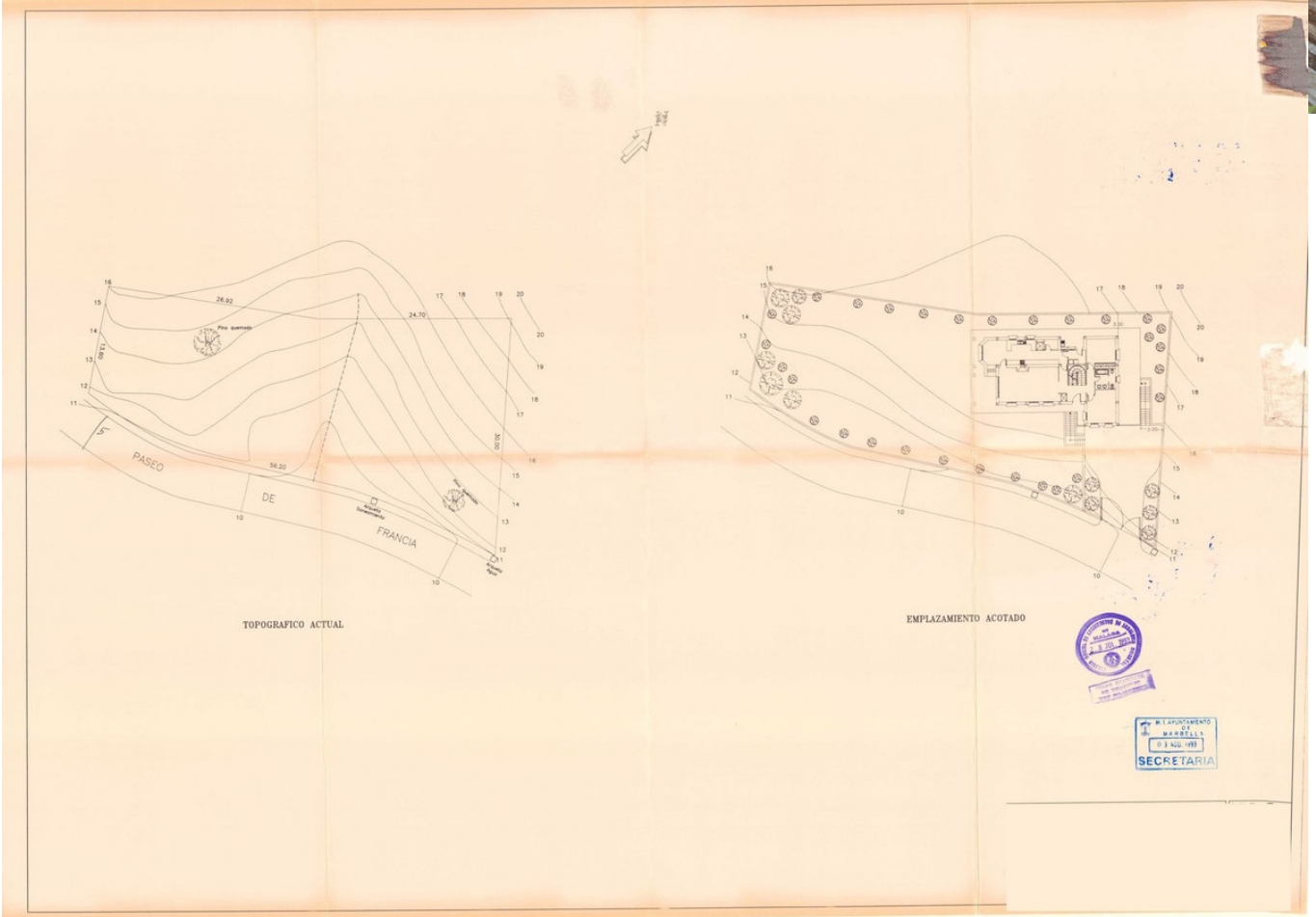


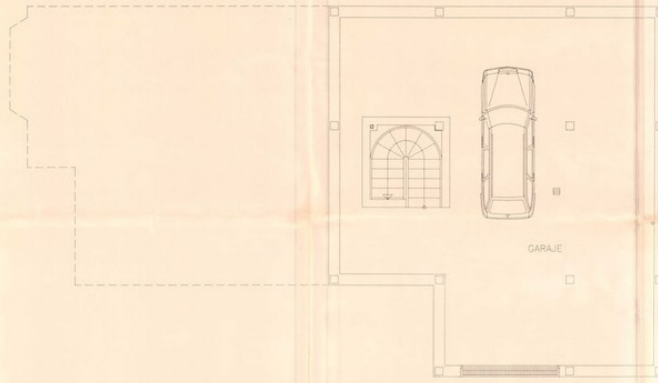








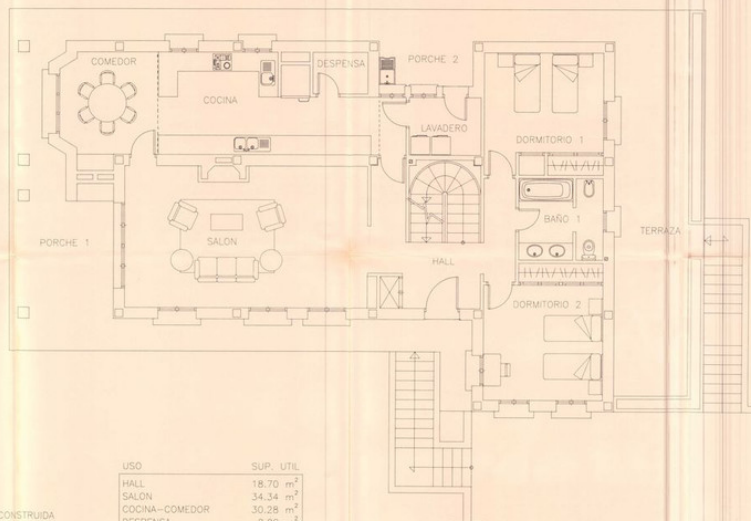




USO	SUP. UTIL
GARAJE	90,03 m ²
TOTAL SUP. UTIL P.SOTANO	90,03 m²



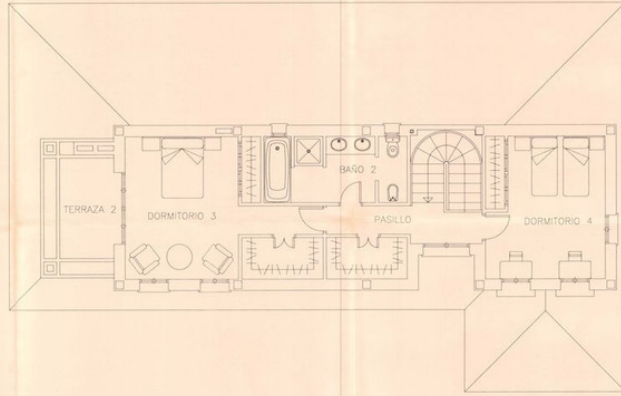
PL. VICTORIA, 3-07. TEL. 278676 - FAX 278862 (BARCELONA)



USO	SUP. CONSTRUIDA
PILANTA BAJA	154,65 m ²
PORCHE 2	2,07 m ²
TOTAL SUP. CONSTRUIDA	156,72 m²

USO	SUP. UTIL
HALL	18,70 m ²
SALON	34,34 m ²
COCINA-COMEDOR	30,28 m ²
DESPENSA	2,28 m ²
LAVADERO	4,05 m ²
DORMITORIO 1	14,18 m ²
DORMITORIO 2	15,36 m ²
BAÑO 1	6,58 m ²
PORCHE 1	20,27 m ²
PORCHE 2	4,13 m ²
TERRAZA 1	35,77 m ²
TOTAL SUP. UTIL	185,94 m²





USO	SUP. CONSTRUIDA
VIVIENDA	75.19 m ²
TOTAL SUP. CONSTRUIDA P.ALTA	75.19 m ²
TOTAL SUP. CONSTRUIDA PLANTA BAJA + PLANTA ALTA	235.91 m ²

USO	SUP. UTIL.
PASILLO + (armario)	8.24 m ²
BAÑO 2	8.90 m ²
DORMITORIO 3	22.97 m ²
DORMITORIO 4	16.60 m ²
TERRAZA 2	5.36 m ²
TOTAL SUP. UTIL. P.ALTA	62.07 m ²

