



Sales - House - Estepona
2.450.000€

www.mibgroup.es
+34 662 58 96 58
info@mibgroup.es

IBI: 2,350 EUR / year

 5

 5

 733 m2

 6860 m2

FANTASTIC VILLA OF HIGH ARCHITECTURAL LEVEL, on three floors with impressive panoramic views of the Mediterranean Sea and the mountains. Very exceptional details, such as its own winery, private tennis court, swimming pool with waterfall, park-like garden with several fountains and orange trees. It also offers its own elevator, a large living room with access to the representative terrace, ideal for those who receive a lot of visitors. The villa is located in Estepona, a great opportunity, tranquility and, at the same time, being close to services. The visit is highly recommended.

Setting <ul style="list-style-type: none">✓ Town✓ Village✓ Close To Port✓ Close To Shops✓ Close To Sea✓ Close To Town✓ Close To Schools✓ Marina✓ Close To Marina✓ Urbanisation	Orientation <ul style="list-style-type: none">✓ East✓ South	Condition <ul style="list-style-type: none">✓ Good	Pool <ul style="list-style-type: none">✓ Private
Climate Control <ul style="list-style-type: none">✓ Air Conditioning✓ Hot A/C✓ Cold A/C✓ Fireplace	Views <ul style="list-style-type: none">✓ Sea✓ Mountain✓ Golf✓ Port✓ Country✓ Panoramic✓ Garden✓ Pool✓ Street	Features <ul style="list-style-type: none">✓ Covered Terrace✓ Lift✓ Fitted Wardrobes✓ Near Transport✓ Private Terrace✓ Satellite TV✓ Sauna✓ Games Room✓ Paddle Tennis✓ Tennis Court✓ Storage Room✓ Utility Room✓ Ensuite Bathroom✓ Jacuzzi✓ Bar✓ Barbeque✓ Double Glazing✓ Basement	Furniture <ul style="list-style-type: none">✓ Optional
Kitchen <ul style="list-style-type: none">✓ Fully Fitted	Garden <ul style="list-style-type: none">✓ Private	Security <ul style="list-style-type: none">✓ Gated Complex✓ Entry Phone✓ Alarm System	Parking <ul style="list-style-type: none">✓ Garage✓ Covered✓ More Than One
Utilities <ul style="list-style-type: none">✓ Electricity✓ Drinkable Water✓ Telephone	Category <ul style="list-style-type: none">✓ Investment✓ Resale		













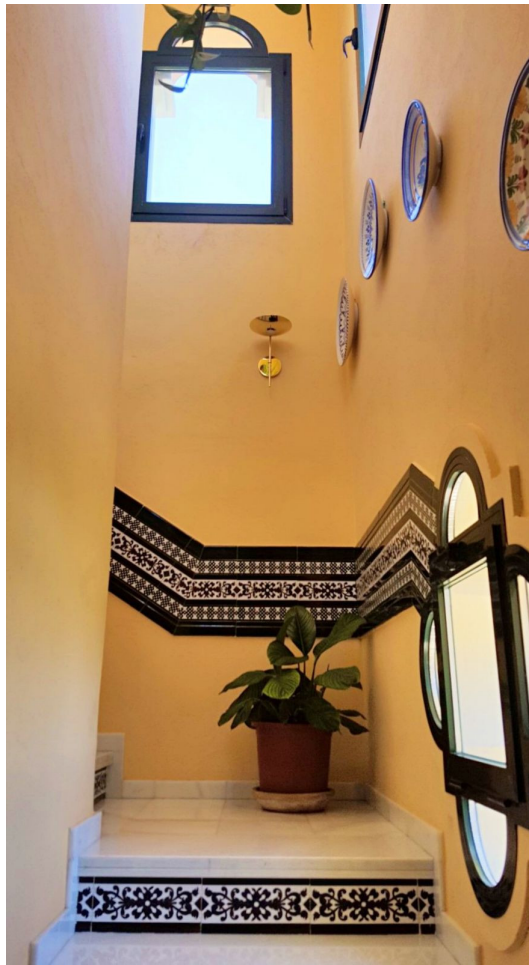














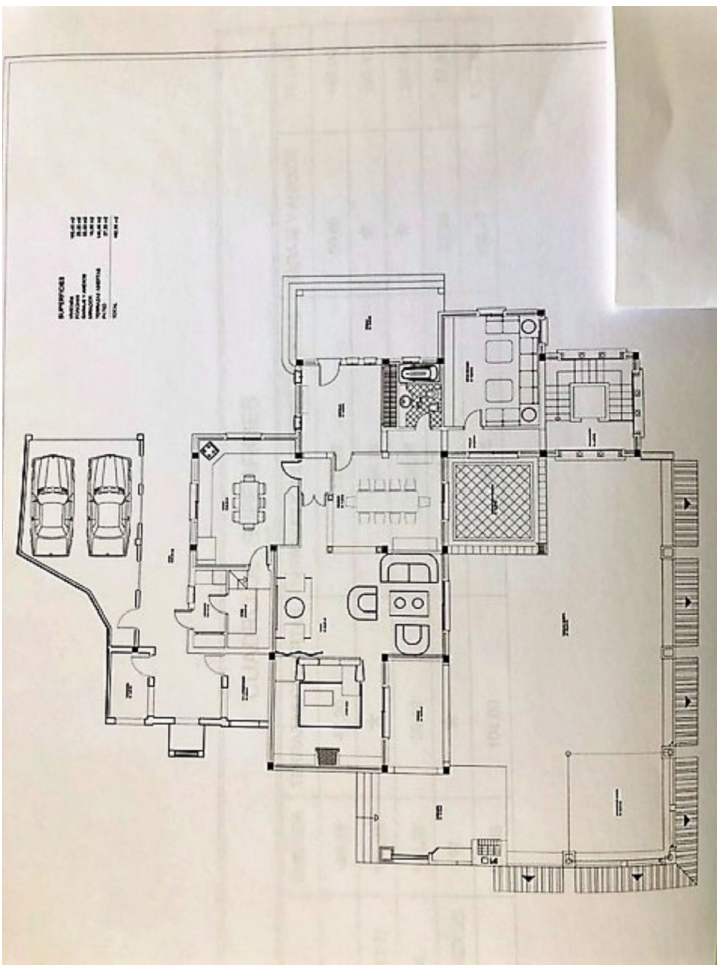


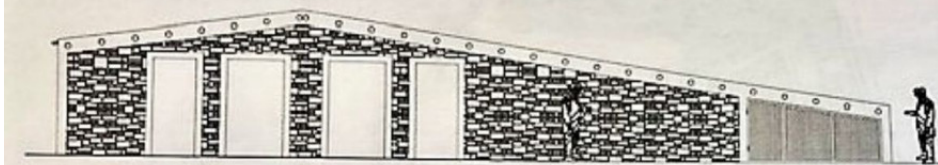






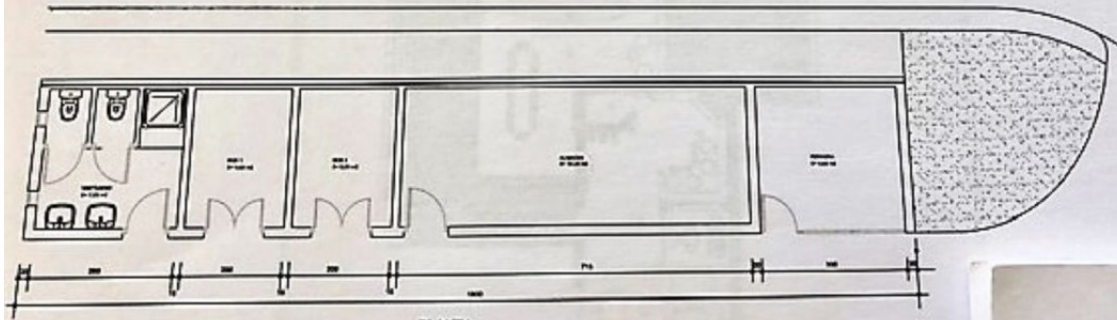






ALZADO SUR

SUPERFICIES
ALMACEN Y ANEXOS



PLANTA

CUADRO DE SUPERFICIES						
		m ²				
PLANTA	VIVIENDA	TERRAZAS CUBIERTAS	TERRAZAS Y SUPERFICIES ABIERTAS	GARAJE Y ANEXOS	TOTAL	
BAJA	190,45	47,80	173,95	50,60	462,80	
DORMITORIOS (-1)	186,95	*	54,15	*	241,10	
BODEGA Y SPA	144,05	56,10	134,25	*	334,40	
ALMACEN Y ANEXOS	*	*	*	57,60	57,60	
TOTAL	521,45	104,00	362,35	108,20	1.096,00	

