

Ref.-ID: MIBGR3380467

La Cala Golf

Plot



1402 m2

This superb building plot offers the most outstanding panoramic sea and mountain views. The 2 next door plots have already been sold and the plot backs onto a green zone meaning that nobody can build in front and in any way obstruct the wonderful views. The plot of 1.401m2 is located near the golf clubhouse, with services of: electricity, telephone, water, sewage, and 24 hour on site security. Current building regulations allow you to build your detached villa of 265 m2 + uncovered terraces, pool and basement Orientation : East, South East, South. Maximum height: 7m allowing 2 floors plus basement area, garage and swimming pool The La Cala Resort is a golf complex in the municipality of Mijas and in the province of Málaga. It includes three 18-hole golf courses (Campo América, Campo Asia and Campo Europa), a 6-hole par 3 pitch & putt course and a La Cala Golf Academy. It also has a four-star hotel La Cala Spa Hotel. The three 18-hole courses were designed by Cabell B. Robinson and have different levels of difficulty. Both the hotel and the other facilities are in traditional Andalusian style. It was inaugurated in 1989. Malaga and Marbella can be reached in about 30 minutes by car. Near the property is the famous German school la Mairena ! Please do not hesitate to contact us for further information.

Setting

- ✓ Close To Golf
- ✓ Close To Town

Orientation

- ✓ North East
- ✓ East
- ✓ South

Views

- ✓ Sea
- ✓ Mountain
- ✓ Golf
- ✓ Country
- ✓ Panoramic
- ✓ Garden
- ✓ Pool
- ✓ Courtyard
- ✓ Lake
- ✓ Forest

Category

- ✓ Cheap
- ✓ Investment
- ✓ Resale
- ✓ With Planning Permission

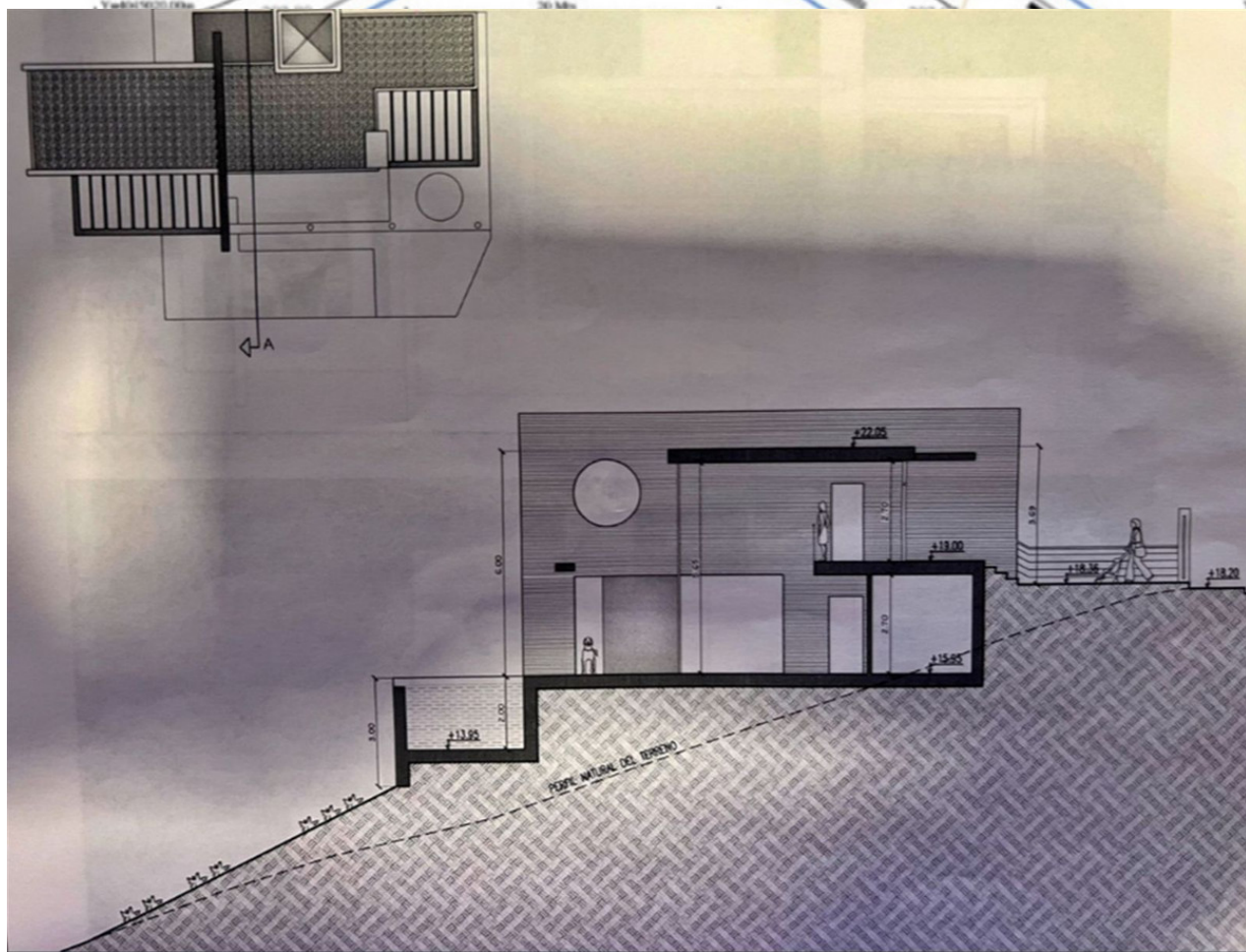


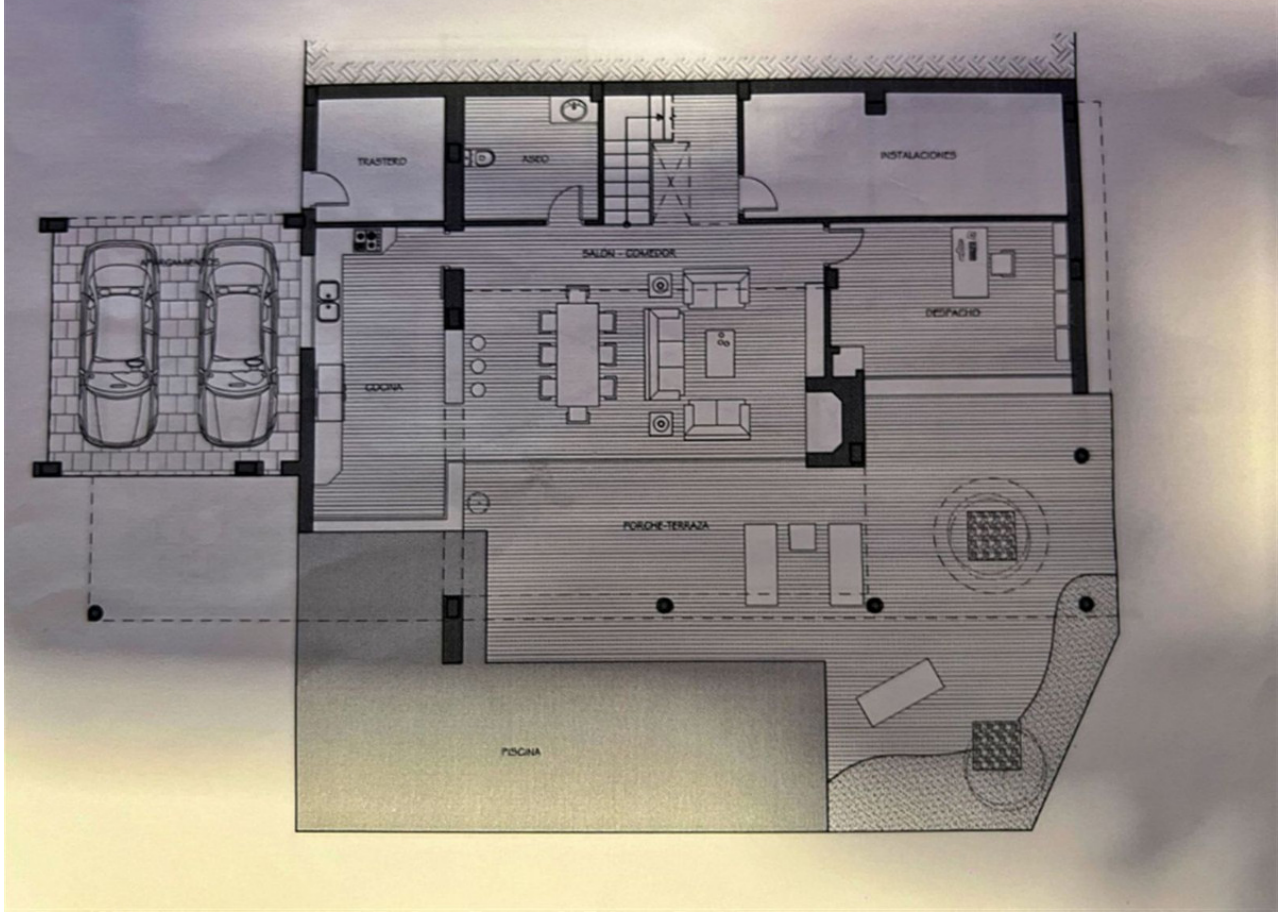












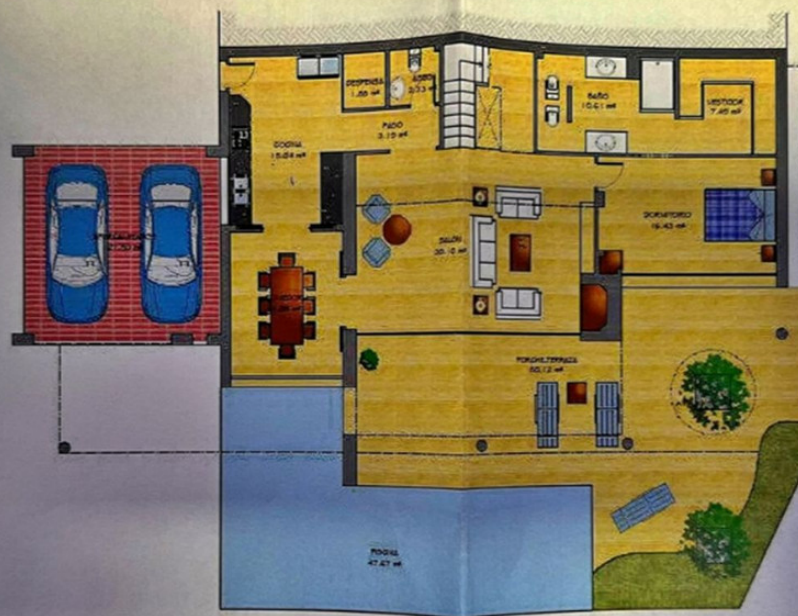


General Data

PLOT 12				
FLOOR	PROGRAM	Useful Area (m²)	Built-up Area (m²)	Total of Floors
FIRST FLOOR	Pool	13.34		
	Corridor	7.28		
	Bedroom 1	6.07		
	Core	13.36		
	Bedroom 2	14.08	123.49	
	Water Bedroom	13.80		
	Water Bedroom	18.18		
	Water Bedroom	8.26		
	Water Bedroom	11.20		
	Water Bedroom	11.20		
TOTAL		108.00	123.49	1
GROUND FLOOR	Core	11.85		
	Corridor	13.07		
	Water and Dining Room	40.80		
	Water	6.37		
	Living Room	20.22	143.30	
	Water	10.31		
	Water	10.31		
TOTAL		108.00	143.30	1
BASEMENT	Core	7.70		
	Corridor 1	6.19		
	Corridor 2	6.37		
	Laundry & Storage	6.18		
	Living Room	20.37		
	Bedroom	6.03		
	Bedroom 2	11.07		
	Bedroom 3	15.03		
	Corridor 3	7.80		
	Interior Garden	10.07		
TOTAL		108.00	108.00	1
TOTAL		246.78	475.28	3
EXTERNAL AREA	Pool		13.34	
	First Floor Uncovered Terrace		23.41	
	Ground Floor Uncovered Terrace		10.00	
	Basement Floor Uncovered Terrace		110.00	
TOTAL			236.75	

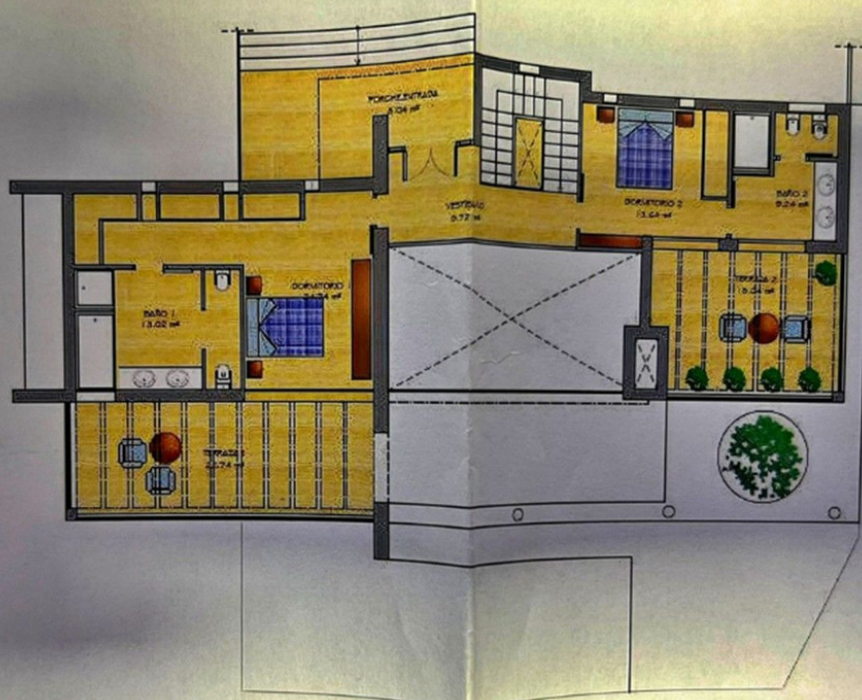
SUMMARY				
PLOT	BUILDABILITY	PLOT AREA (m²)	BUILDABILITY	SCENARIO
12	0.33	1,338.00	211.76	236.75

Notes:
 Algunas áreas pueden incluirse o no en el programa de construcción.
 El área construida es la suma de las áreas de construcción.
 Superficie construida es la suma de las áreas de construcción.
 Superficie útil es la suma de las áreas de construcción.



PLANTA BAJA
102.80 m²

ESCALA: 1/100



PLANTA ALTA
94.70 m²

ESCALA: 1/100









