

Ref.-ID: MIBGR3612701

Almachar

Plot

IBI: 44 EUR / year



1



1



150 m2

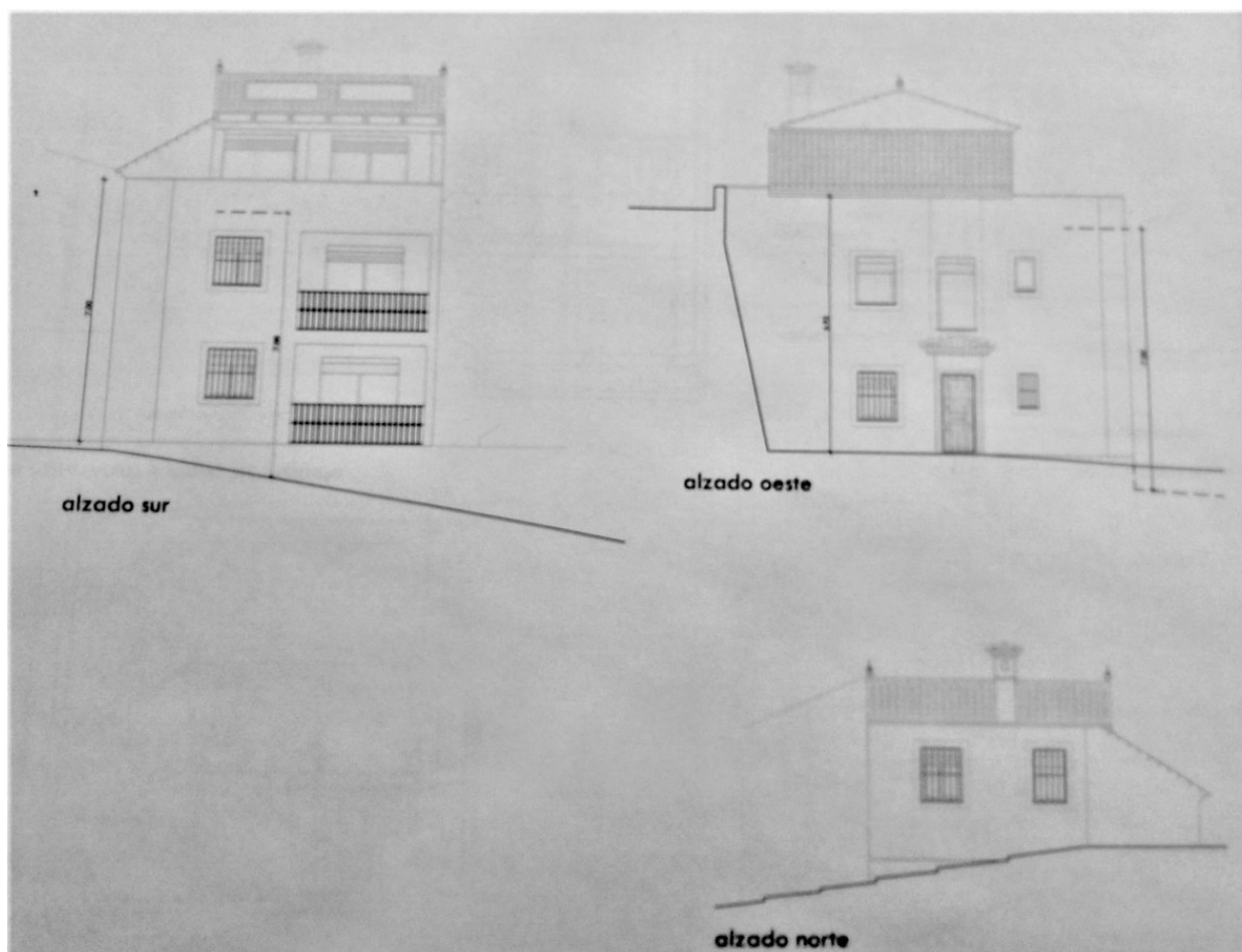


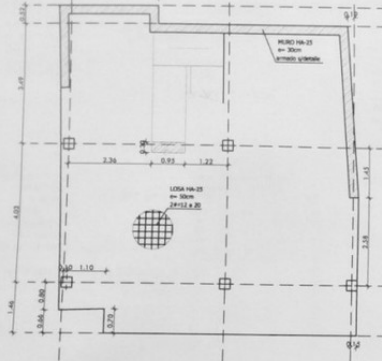
45 m2

Urban plot with a construction project approved by the City Council and ready to build a three-story house, with four bedrooms, three bathrooms, one of them ensuite in the master bedroom, also with dressing room. All bedrooms with fitted wardrobes. The last floor would have a large 24 sq mtr terrace with a wooden pergola and a storage room. It is located in the town of Almachar, a beautiful inland town in the province of Málaga. It is half an hour from the coast and 45 minutes from Malaga city and the airport.

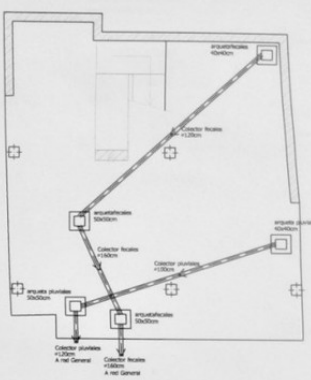
Setting

✓ Country





PLANTA DE CIMENTACIÓN



RED DE SANEAMIENTO HORIZONTAL

Materiales y Seguridad según EHE y NCSE

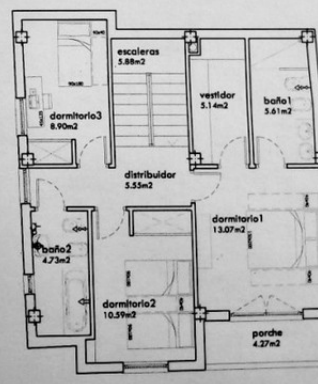
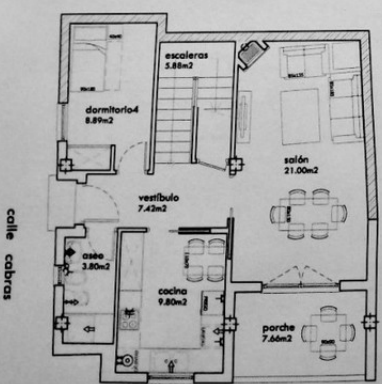
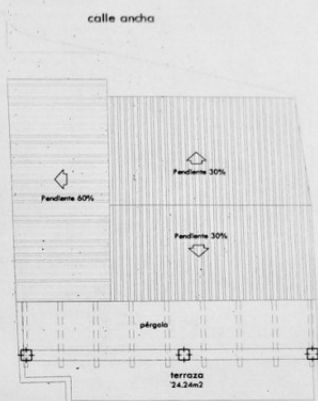
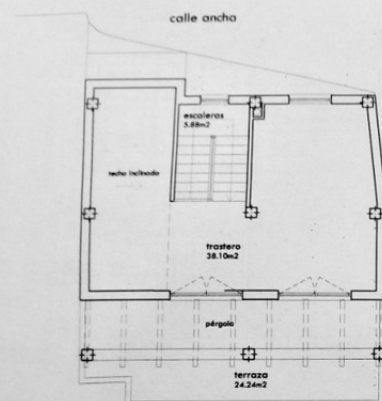
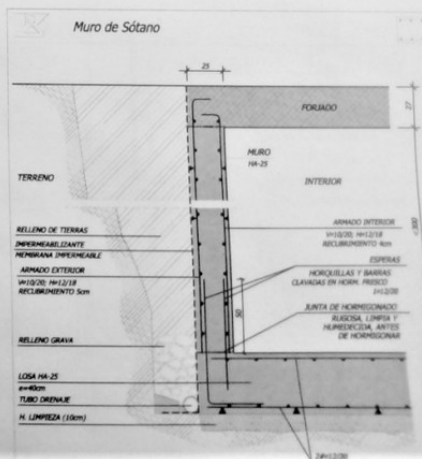
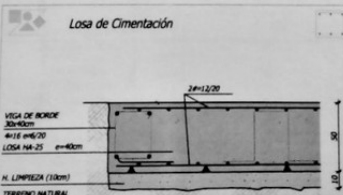
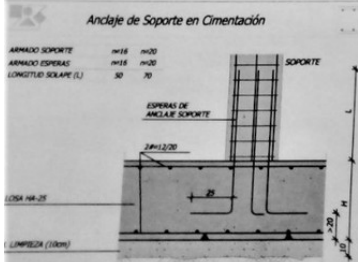
HORMIGÓN	ACCIONES	P.P.	Cargas	Sobrec.	Total
HA-25/18/10/20					
HA-25/18/10/20					
Seguridad: 1.5					
ACERO					
HA-40/10/10/20					
Seguridad: 1.15					

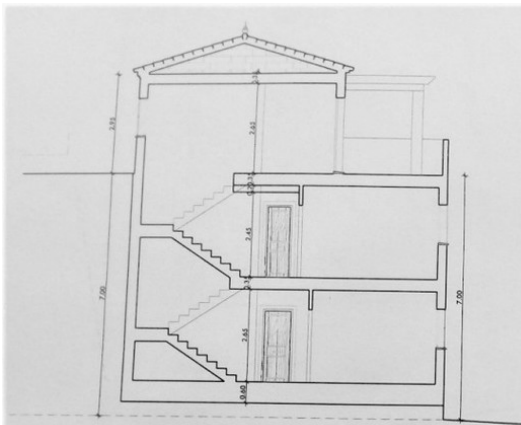
SISMO Municipal - Altimétrico
 Aceleración Sísmica (a_g) 0.17
 Coeficiente C=1.15 Terreno normal (Tipo II)
 Coeficiente de Amplificación = 2.20
 Aceleración Sísmica de Cálculo (a_c) 0.18
 Coeficiente de la estructura m=2 (B.M.)

CUADRO DE SOPORTES

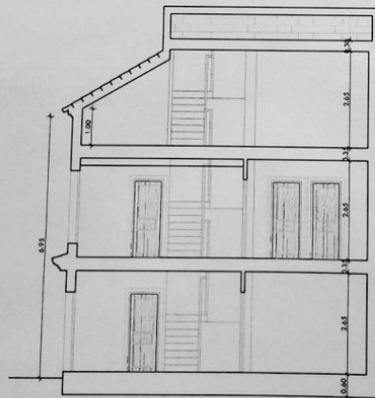
TIPO	SITUACIÓN	PLANTAS:	P.1-2	P.3-4
1	CENTRALES	SECCIÓN	Esquina 30x30 Centro 4x16 Cercos C-1	Esquina 30x30 Centro 4x16 C-1
2	PERIMETRALES	SECCIÓN	Esquina 30x30 Centro 4x16 Cercos C-1	Esquina 30x30 Centro 4x16 C-1

* C-1: Estribos #8/15, en extremos (70cm) a 10cm





sección transversal y plano de rasante



sección longitudinal

Sección Constructiva de la Fachada

