

**Ref.-ID: MIBGR3720593**

**Coín**

**Plot**

**IBI: 98 EUR / year**



**676 m2**

Residential plot with project already in place in a popular urbanisation in Coín. This south facing plot has simply magnificent views of the countryside and the Mijas mountains. The plot is gently sloping, with green zones in front and to the side. The project is for a modern 2 storey villa of 218m<sup>2</sup> with 4 bedrooms, 3 bathrooms, an additional 129m<sup>2</sup> basement and a swimming pool. The buyer will have the option to personalise the house to their own tastes. Plans are available upon request; contact us for more information.

**Setting**

- ✓ Close To Shops
- ✓ Close To Town
- ✓ Urbanisation

**Orientation**

- ✓ South

**Views**

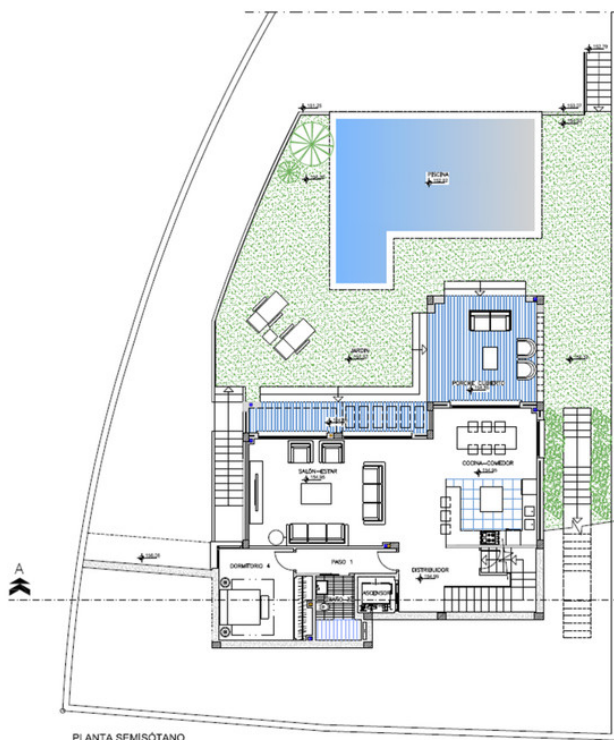
- ✓ Mountain
- ✓ Country
- ✓ Urban
- ✓ Street

**Parking**

- ✓ Street

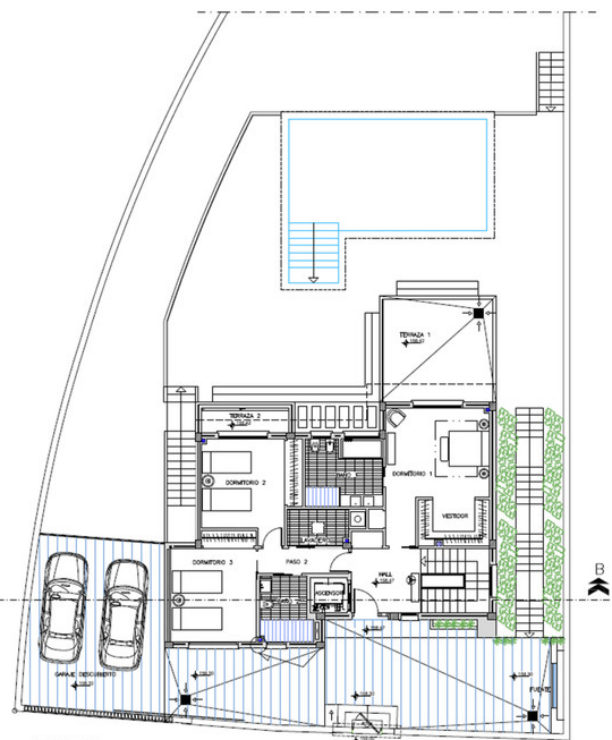
**Category**

- ✓ Investment
- ✓ Off Plan
- ✓ Resale
- ✓ With Planning Permission



PLANTA SEMISÓTANO  
DISTRIBUCIÓN

SUPERFICIES	CONSTRUIDAS	ÚTILES
<b>PLANTA SÓTANO:</b>		
TRASTERO, ESCALERA Y ASCENSOR...	126.59 M2	112.07 M2
<b>PLANTA SEMISÓTANO:</b>		
VIVIENDA...	108.52 M2	92.39 M2
PORCHE CUBIERTO...	20.07 M2	18.55 M2
PISCINA (Lámina de agua)...	40.20 m2	40.20 m2
<b>PLANTA BAJA:</b>		
VIVIENDA...	106.52 M2	90.97 M2
TERRAZA DESCUBIERTA 1...	20.07 M2	18.28 M2
TERRAZA DESCUBIERTA 2...	5.04 M2	3.53 M2
GARAJE DESCUBIERTO...	41.60 M2	36.37 M2



PLANTA BAJA  
DISTRIBUCIÓN

FECHA:	ESCALA:	5	DISTRIBUCIÓN PLANTA SEMISÓTANO Y BAJA
SEP. 2019	1/75		



















