

**Ref.-ID: MIBGR3849592**

**Almachar**

**House**



**5**



**2.5**



**210 m2**



**121 m2**

Almáchar is a white town in the interior of the province of Malaga. It is known for its Ajoblanco festival, the first weekend of September. Ajoblanco is a cold soup composed mainly of garlic and ground almonds to which grapes, apple or other seasonings are added, to suit the consumer. The town is an hour from Malaga airport and the city, and half an hour from the coast. In the upper part of the town, with impressive views of the mountains that surround the valley and of El Borge - the closest town-, is this fabulous semi-detached house, ready for you to design it to your liking and give it your personal touch. It has 210 m2 of construction. Three floors, where you can distribute five bedrooms, two bathrooms and a guest toilet, space for a living-dining room and kitchen, a garage with more than 100 m2, several storage rooms and an attic. It has space for a terrace at the rear, facing south and with panoramic views of La Maroma; the highest mountain in the province. You can see the design in the photos. We are pleased to be able to present this dream property to you soon, either personally or via virtual viewing. Because this world, it is unique - just like our Axarquía. In Andalusia. On the Costa del Sol. Here, on the sunny side of life...

**Orientation**

✓ South

**Views**

✓ Country

**Furniture**

✓ Not Furnished

**Parking**

✓ Garage  
 ✓ More Than One



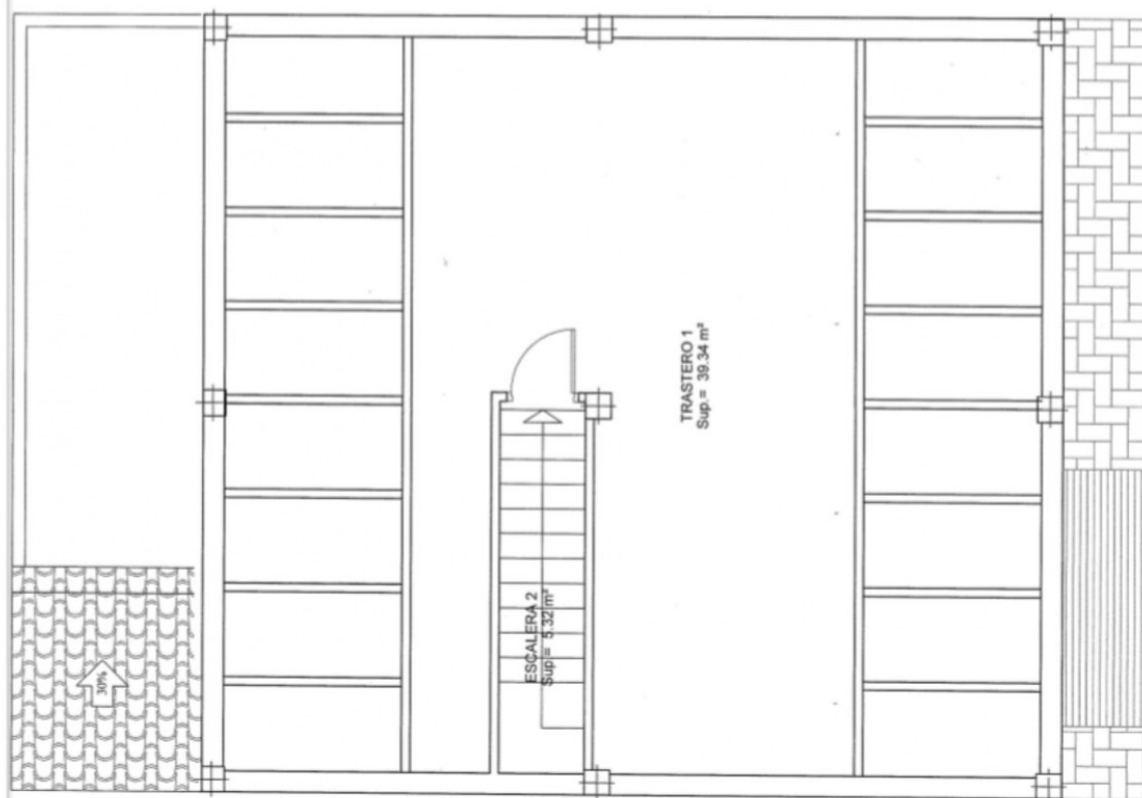






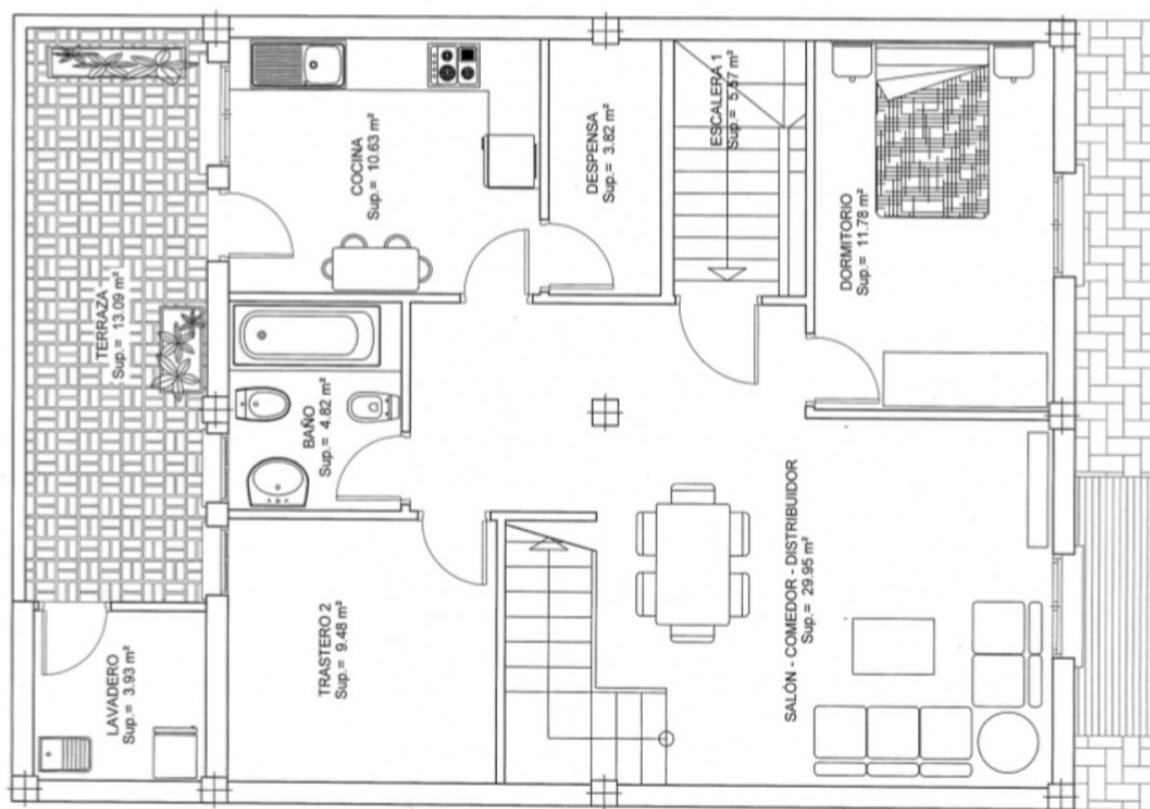






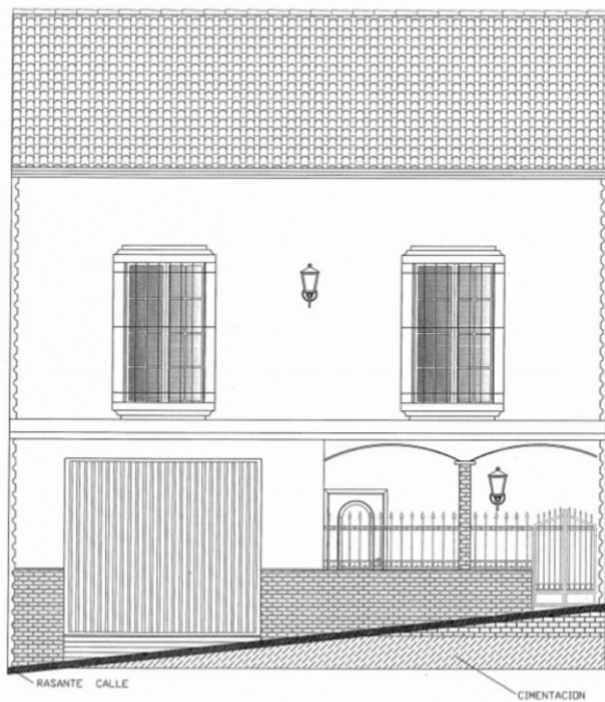
Escala: 1/50

PLANTA BAJO CUBIERTA



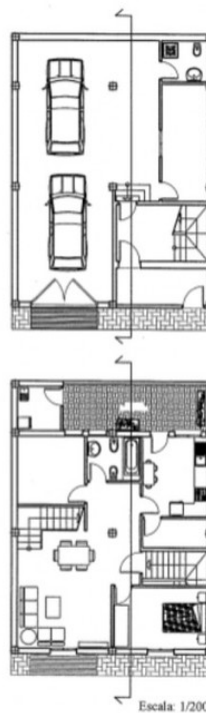
Escala: 1/50

PLANTA PRIMERA

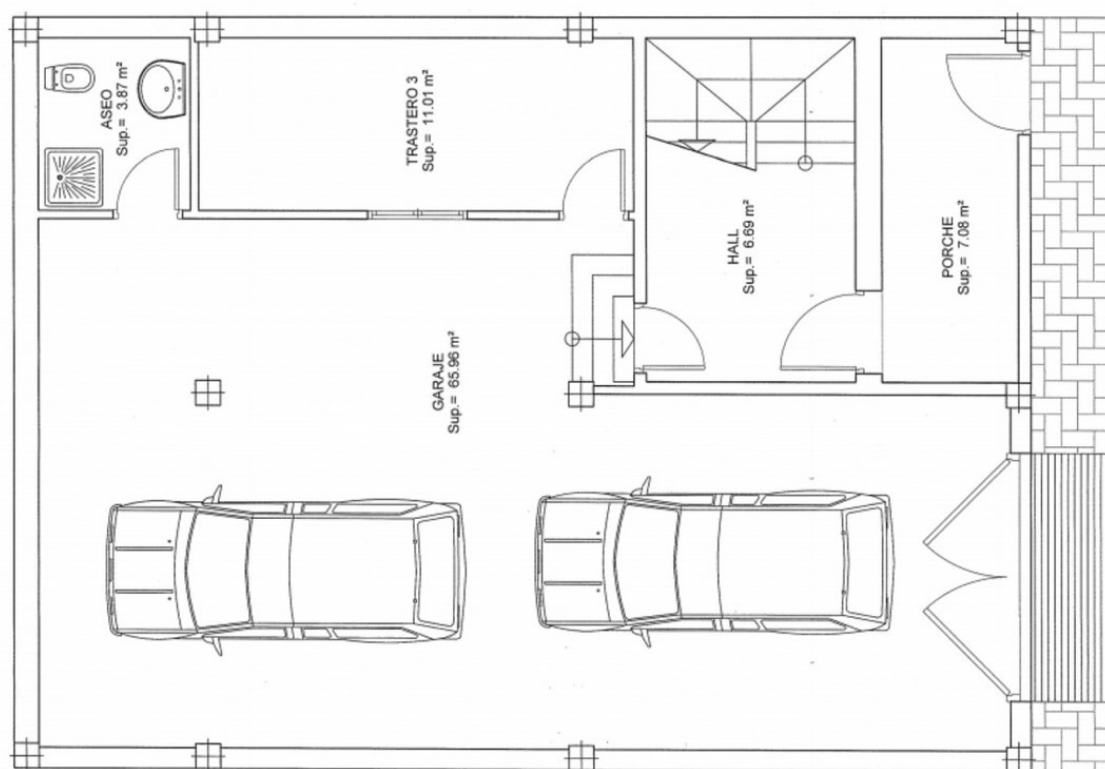


ALZADO PRINCIPAL

Escala: 1/50



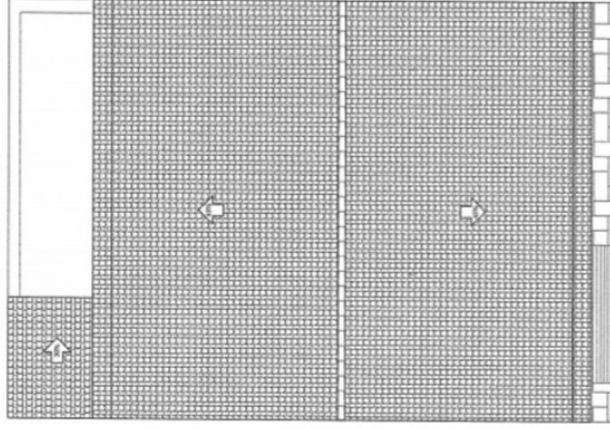
Escala: 1/75



PLANTA BAJA

CUADRO DE SUPERFICIES

SUPERFICIE ÚTL. PLANTA BAJA		SUP. m <sup>2</sup>	SUPERFICIE ÚTL. PLANTA PRIMERA		SUP. m <sup>2</sup>	SUPERFICIE ÚTL. BAO CUBIERTA		SUP. m <sup>2</sup>	SUPERFICIE DE CUBIERTA		SUP. m <sup>2</sup>
GARAJE		65.95	SALÓN - COMEDOR - DISTRIBUIDOR		25.95	TRASTERO 1		39.94	TERRAZA		13.09
TRASTERO 3		11.01	COCHIN		10.83	TOTAL SUPERFICIE ÚTL.		91.67	(Solo computa a efecto de valoración, no como superficie construida)		
HALL		6.69	DORMITORIO		11.78	TOTAL SUPERFICIE CONSTRUIDA		91.67			
PORCHE CUBIERTO		7.08	DESPENSA		3.82						
ASEO		3.87	BAÑO		4.82				SUPERFICIE ÚTL. POR USO		
TOTAL SUPERFICIE ÚTL.		94.81	TRASTERO 2		9.48						
TOTAL SUPERFICIE CONSTRUIDA		112.05	ESCALERA 1		5.57						
			LAVADERO		3.93	TOTAL SUPERFICIE ÚTL.		210.53 m <sup>2</sup>	VIVIENDA		54.14
						TOTAL SUPERFICIE CONSTRUIDA		300.52 m <sup>2</sup>	TRASTERO		60.43
									GARAJE		66.99



PLANTA CUBIERTA

Escala: 1/100