

Ref.-ID: MIBGR3955450

Fuengirola

House

Community: 1,200 EUR / year

IBI: 920 EUR / year



4



3



238 m2



27 m2

If your dream is to enjoy a luxury home in the center of Fuengirola and within walking distance of the promenade and the beach, you have just found the ideal home to make it come true. This brand new townhouse is completely renovated with luxury qualities. It has 4 double bedrooms, 3 bathrooms, a toilet, a fully furnished and equipped kitchen with the latest design and appliances, a living-dining room with access to the terrace with access to the community pool. The master bedroom has a large dressing room, and bathroom-ensuite. In addition, this house has a private and closed garage for two cars, and a semi-basement with the option of converting it into an apartment, cinema room, gym, games room, etc ... A luxury of enclave, of housing and location. Feel free to come visit her.

Setting

- ✓ Town
- ✓ Village
- ✓ Close To Shops
- ✓ Close To Sea
- ✓ Close To Town
- ✓ Close To Schools
- ✓ Close To Marina
- ✓ Urbanisation

Climate Control

- ✓ Air Conditioning
- ✓ Hot A/C

Kitchen

- ✓ Fully Fitted

Orientation

- ✓ South East

Views

- ✓ Urban

Security

- ✓ Electric Blinds

Condition

- ✓ Excellent
- ✓ Recently Renovated

Features

- ✓ Near Transport
- ✓ Solarium
- ✓ Storage Room
- ✓ Marble Flooring
- ✓ Double Glazing

Parking

- ✓ Underground
- ✓ Garage
- ✓ Private

Pool

- ✓ Communal

Furniture

- ✓ Part Furnished

















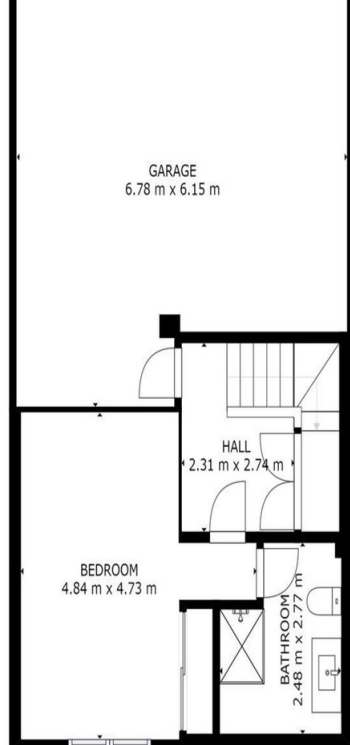










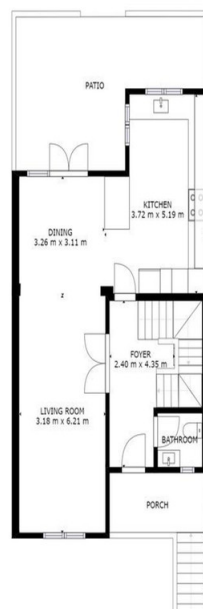
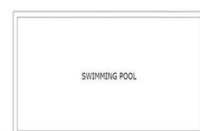


GROSS INTERNAL AREA
 FLOOR 1: 34 m², FLOOR 2: 64 m²
 FLOOR 3: 67 m², FLOOR 4: 12 m²
 EXCLUDED AREAS: GARAGE: 38 m²
 DECK: 9 m²
 TOTAL: 176 m²

SIZES AND DIMENSIONS ARE APPROXIMATE, ACTUAL MAY VARY.



FLOOR 1

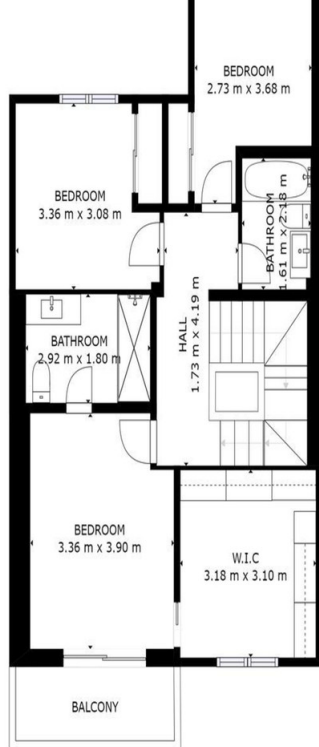


GROSS INTERNAL AREA
 FLOOR 1: 34 m², FLOOR 2: 64 m²
 FLOOR 3: 67 m², FLOOR 4: 12 m²
 EXCLUDED AREAS: GARAGE: 38 m²
 DECK: 9 m²
 TOTAL: 176 m²

SIZES AND DIMENSIONS ARE APPROXIMATE, ACTUAL MAY VARY.



FLOOR 2

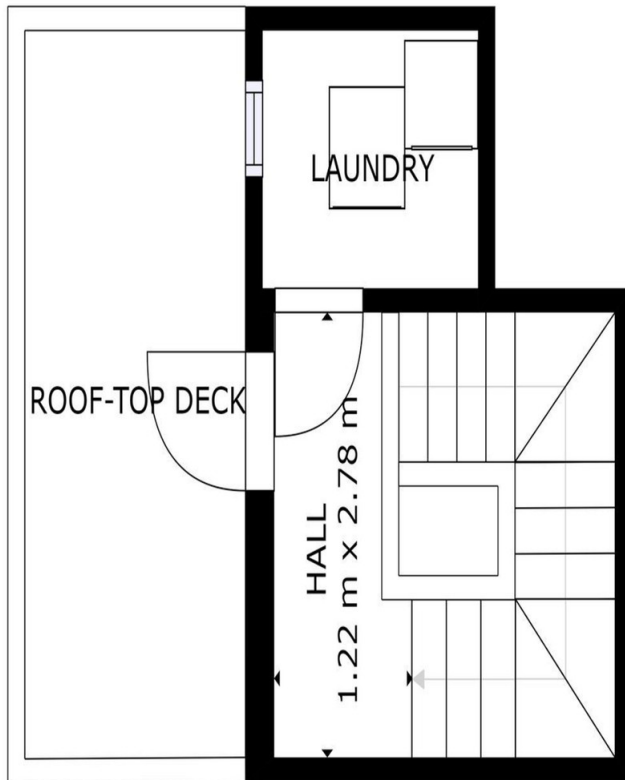


GROSS INTERNAL AREA
 FLOOR 1: 34 m², FLOOR 2: 64 m²
 FLOOR 3: 67 m², FLOOR 4: 12 m²
 EXCLUDED AREAS: GARAGE: 38 m²
 DECK: 9 m²
 TOTAL: 176 m²

SIZES AND DIMENSIONS ARE APPROXIMATE, ACTUAL MAY VARY.



FLOOR 3



GROSS INTERNAL AREA
 FLOOR 1: 34 m², FLOOR 2: 64 m²
 FLOOR 3: 67 m², FLOOR 4: 12 m²
 EXCLUDED AREAS: GARAGE: 38 m²
 DECK: 9 m²
 TOTAL: 176 m²

SIZES AND DIMENSIONS ARE APPROXIMATE, ACTUAL MAY VARY.



FLOOR 4