

Ref.-ID: MIBGR4248526

Altos de los Monteros

House

IBI: 4,000 EUR / year

Rubbish: 180 EUR / year



Marbella, the place where everyone wants to live This Villa offers everything a family could want to live a luxurious life near Marbella and Puerto Banus. Located at 10 minutes away from the center of Marbella, 5 minutes away from the best beach on the Costa del Sol "Bahía de Marbella" , and 30 minutes away from Malga International Airport. It is built on a plot of 76,000 square meters and offers sea views from almost all angles. It has 8 bedrooms and 8 bathrooms distributed in 3 levels, garage for 8 cars, stable for horses , 1.206 sqm built plus terraces. This rustic villa is more than you wish for. Schedule a visit and we'll be waiting for you for a presentation in the perfect location.

Setting

- ✓ Country
- ✓ Mountain Pueblo
- ✓ Close To Golf
- ✓ Close To Shops
- ✓ Close To Schools
- ✓ Close To Forest
- ✓ Urbanisation

Climate Control

- ✓ Air Conditioning
- ✓ Pre Installed A/C
- ✓ Central Heating
- ✓ Fireplace

Kitchen

- ✓ Fully Fitted
- ✓ Kitchen-Lounge

Utilities

- ✓ Electricity
- ✓ Drinkable Water
- ✓ Photovoltaic solar panels
- ✓ Solar water heating

Orientation

- ✓ East
- ✓ South
- ✓ West

Views

- ✓ Sea
- ✓ Mountain
- ✓ Country
- ✓ Panoramic
- ✓ Garden

Garden

- ✓ Private
- ✓ Landscaped

Category

- ✓ Bargain
- ✓ Cheap
- ✓ Investment

Condition

- ✓ Good

Features

- ✓ Covered Terrace
- ✓ Fitted Wardrobes
- ✓ Private Terrace
- ✓ Gym
- ✓ Games Room
- ✓ Utility Room
- ✓ Ensuite Bathroom
- ✓ Marble Flooring
- ✓ Bar
- ✓ Barbeque
- ✓ Stables
- ✓ Basement

Security

- ✓ Gated Complex
- ✓ Alarm System
- ✓ 24 Hour Security

Pool

- ✓ Private

Furniture

- ✓ Not Furnished
- ✓ Optional

Parking

- ✓ Garage
- ✓ Covered
- ✓ Private















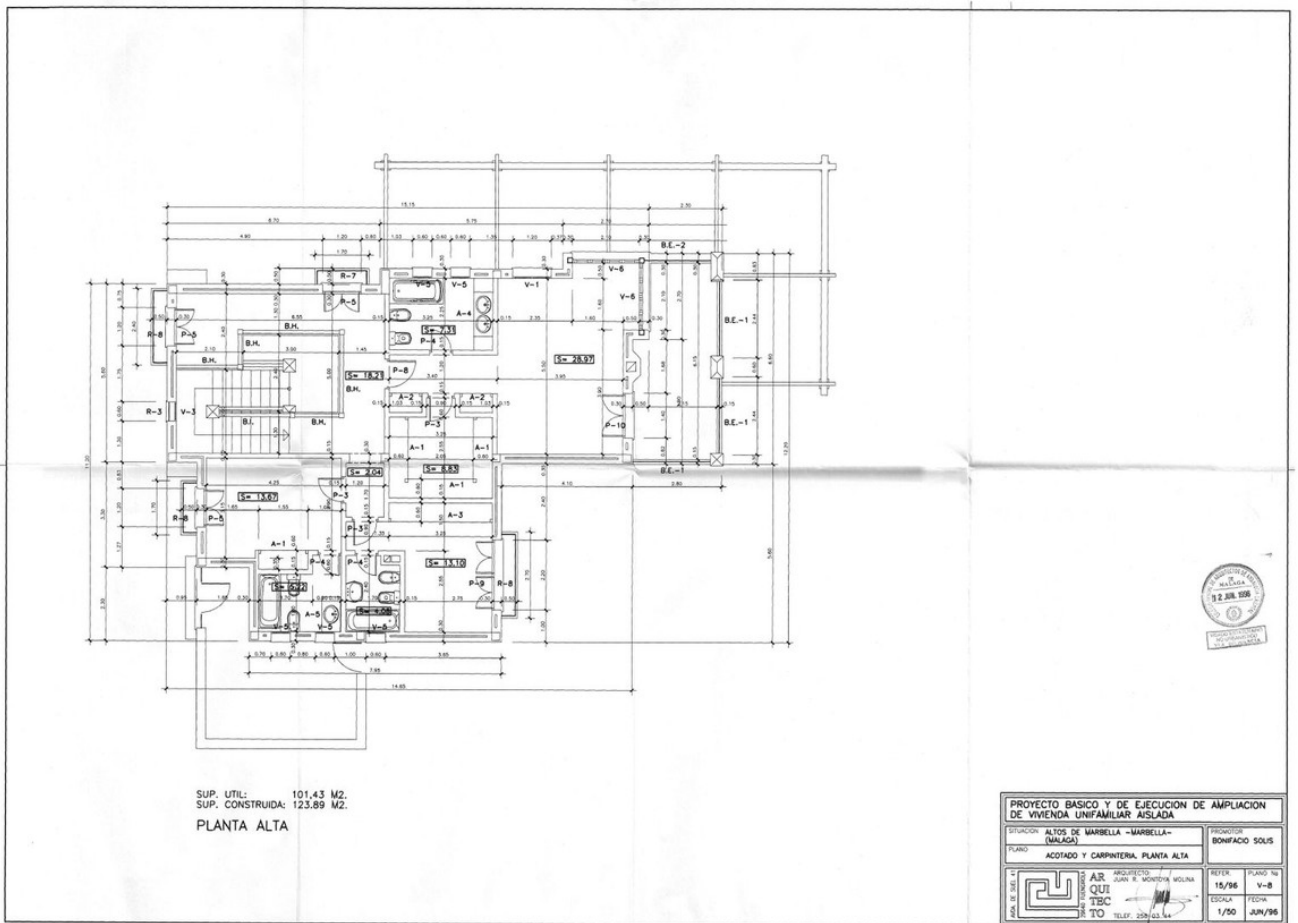


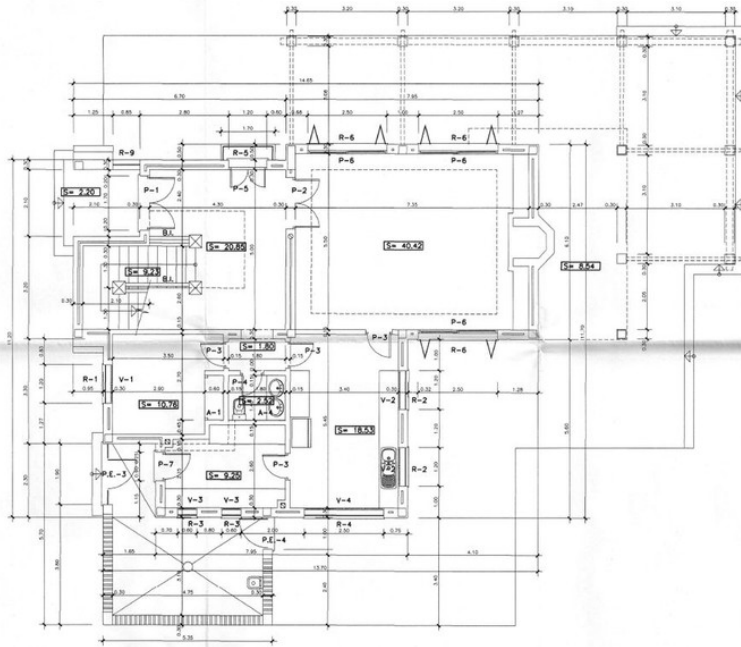












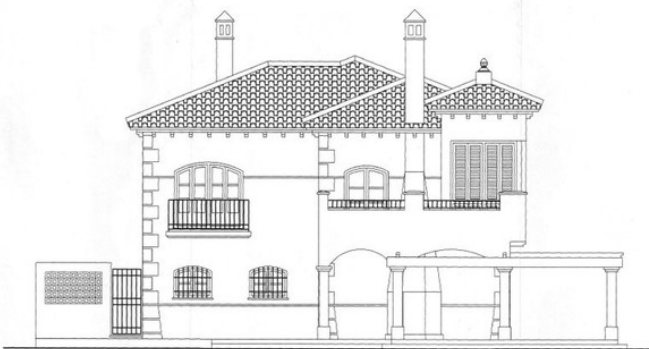
SUP. UTIL: 124,12 M2.
 SUP. CONSTRUIDA: 142,00 M2.
 PLANTA BAJA



PROYECTO BASICO Y DE EJECUCION DE AMPLIACION DE VIVIENDA UNIFAMILIAR AISLADA			
SITUACION: ALTOS DE MARBELLA - MARBELLA - (MÁLAGA)		PROMOTOR: BONIFACIO SOLIS	
PLANO: ACOTADO Y CARPINTERIA PLANTA BAJA			
	ARQUITECTO: JUAN R. MONTAÑA MOLINA	FECHA: 15/96	PLANO Nº: V-7
	QUI: TEC	ESCALA: 1/50	FECHA: JUN/96
TO: TELEF. 284.55.44			



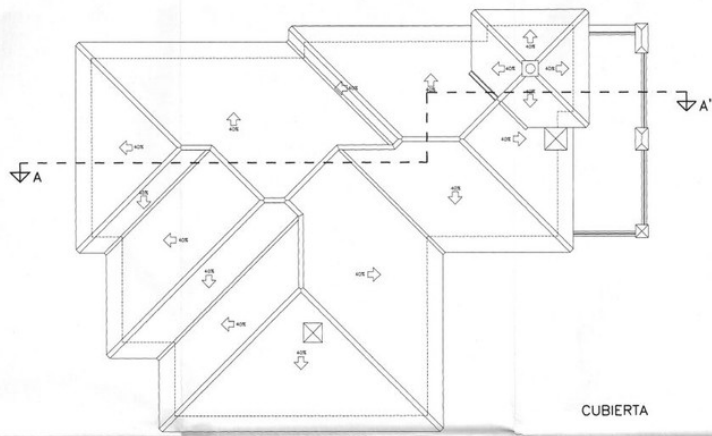
ALZADO PRINCIPAL



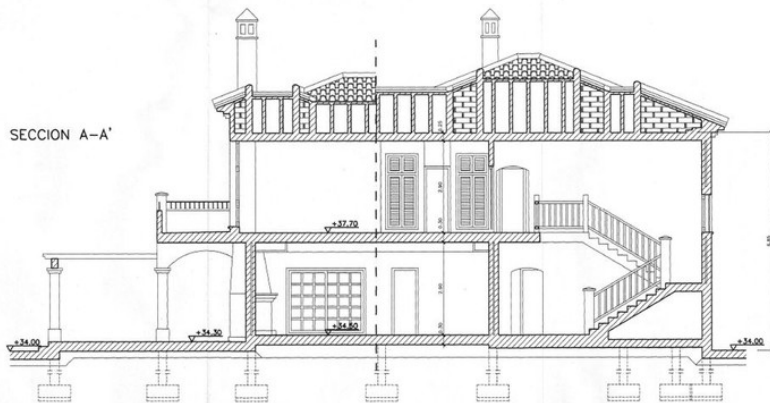
ALZADO POSTERIOR



PROYECTO BASICO Y DE EJECUCION DE AMPLIACION DE VIVIENDA UNIFAMILIAR AISLADA			
SITUACION: ALTOS DE MARBELLA - MARBELLA - (MÁLAGA)		PROMOTOR: BONIFACIO SOLIS	
PLANO: ALZADOS PRINCIPAL Y POSTERIOR			
	ARQUITECTO: JUAN R. MONTAÑA MOLINA	FECHA: 15/96	PLANO Nº: V-10
	QUI: TEC	ESCALA: 1/50	FECHA: JUN/96
TO: TELEF. 284.55.44			



CUBIERTA



SECCION A-A'



PROYECTO BASICO Y DE EJECUCION DE AMPLIACION DE VIVIENDA UNIFAMILIAR AISLADA			
ESTACION ALTO DE MARELLA - MARELLA - (MALAGA)		PROPIETARIO BONIFACIO SOLIS	
PLANO CUBIERTA Y SECCION A-A'		ESTER. PLANO No V-9	
	ARQUITECTO	TECHN. JUN/96	
	JUAN K. MORUA MOLINA	ESCALA	1/50
TEL. 358 53 44			