

Ref.-ID: MIBGR4417516

Benalmadena

Plot



16513 m2

Incredible land to build a hotel complex, aparthotel, also ideal as a sports hotel on an existing luxury base. This 16513m<sup>2</sup> plot has a total buildable area of more than 11500m<sup>2</sup>. With an elegant restaurant and cafe, a paddle tennis club with 5 courts, a children's playground and an indoor playground and several rooms to host different events, it has successfully catered for multiple weddings in a single day. It is a privileged location, a stone's throw from the famous Torrequebrada golf course, designed by the renowned José Gancedo, and just a few minutes from the beautiful sandy beaches of the Costa del Sol. From the prestigious Torrequebrada area you can find in the center of Benalmádena Costa, 8 minutes by car, 20 minutes from Malaga airport and 25 minutes from the center of Marbella. Contact us to find out more about this profitable investment, you won't be disappointed.

#### Setting

- ✓ Close To Port
- ✓ Close To Shops
- ✓ Close To Sea
- ✓ Close To Schools

#### Category

- ✓ Bargain
- ✓ Golf
- ✓ Holiday Homes

#### Views

- ✓ Sea
- ✓ Mountain
- ✓ Golf
- ✓ Country
- ✓ Panoramic

#### Features

- ✓ Paddle Tennis
- ✓ Restaurant On Site

#### Garden

- ✓ Private









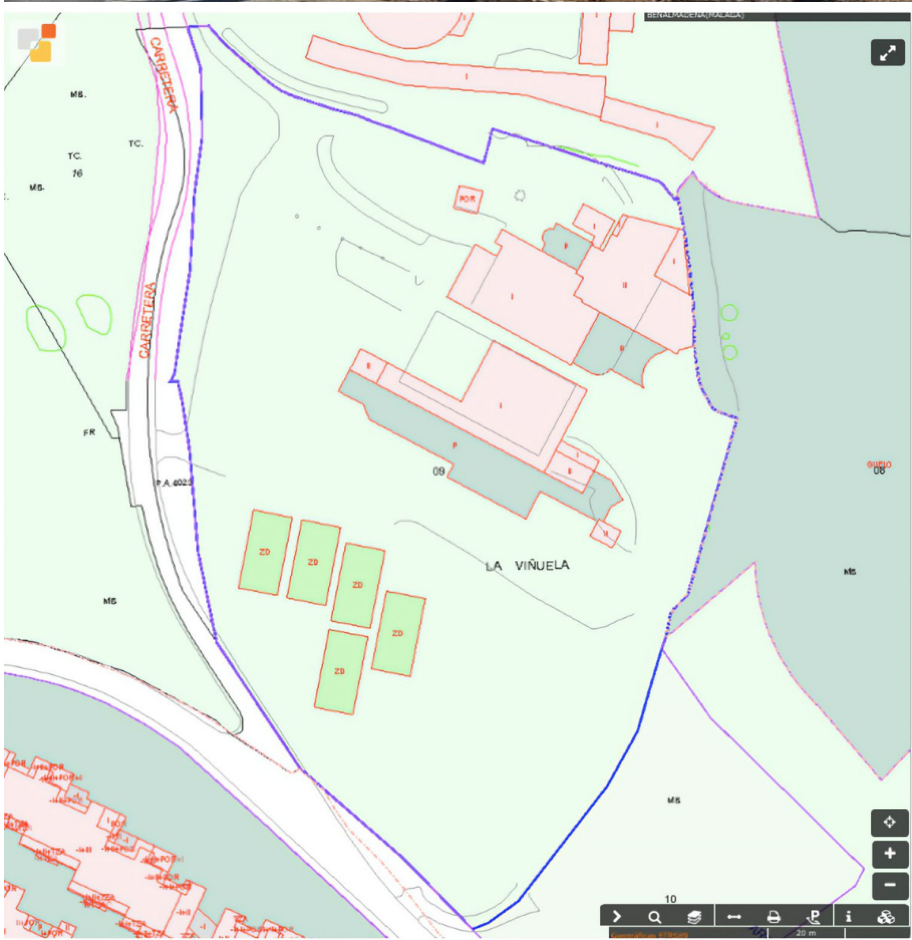


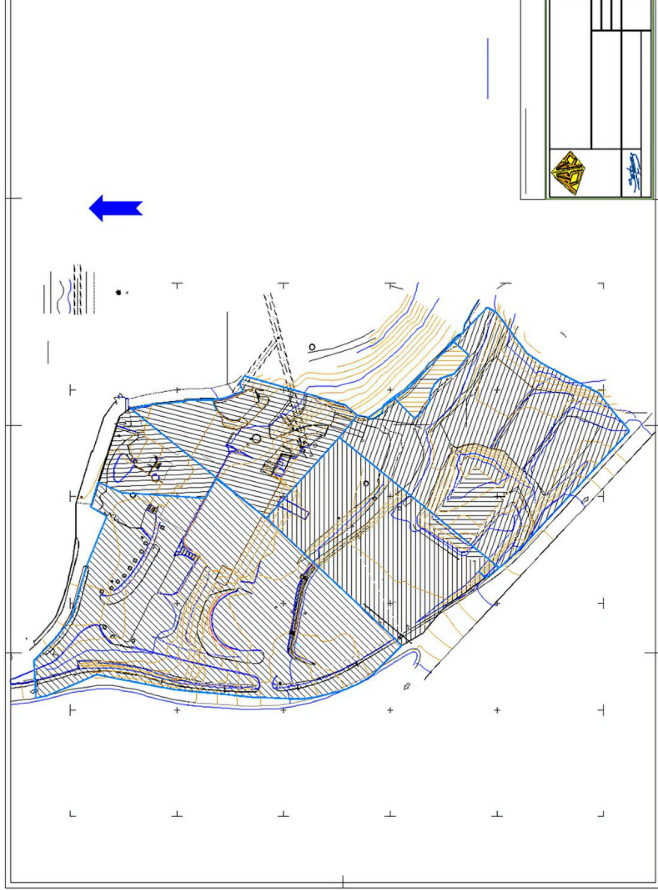












# BENALMÁDENA\*

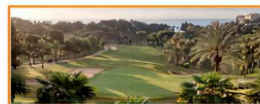


ESTUPA\*BUDISTA\*\*  
BENALMÁDENA\*PUEBLO\*

PUERTO\*MARINA



RESERVA\*DEL\*HIGUERÓN\*  
HOTEL\*HILTON\*



TORREQUEBRADA\*GOLF\*CLUB\*



HOTEL\*  
\*TORREQUEBRADA\*