

Ref.-ID: MIBGR4457248

Calahonda

Apartment

Community: 1,872 EUR / year IBI: 468 EUR / year

Rubbish: 90 EUR / year



3



3



116 m2

Penthouse Duplex with 3 Bedrooms, 3 Bathrooms. Discover the perfect blend of space, comfort, and convenience in this remarkable penthouse duplex. With three bedrooms, three bathrooms, a well-appointed kitchen, and a spacious living area, this residence offers a harmonious living experience. Spread across three levels, this home boasts a distinctive layout that provides privacy and space for every family member. Enjoy the outdoors on any of the three balconies or take in the breathtaking sea views from the expansive rooftop terrace. This spacious terrace is perfect for entertaining or relaxing while enjoying the azure vistas. Situated in the heart of Calahonda, this penthouse duplex is just a stone's throw away from bars, shops, and restaurants, offering a vibrant and lively atmosphere. Moreover, the beach is within walking distance, making it a perfect location for beach lovers. For those seeking tranquility, the lush pool area provides a serene escape, making it an excellent spot to unwind. This penthouse duplex embodies the ideal combination of style, comfort, and convenience, making it a unique opportunity for those looking to embrace the Spanish coastal lifestyle.

Setting

- ✓ Close To Golf
- ✓ Close To Shops
- ✓ Close To Sea
- ✓ Close To Town

Climate Control

- ✓ Air Conditioning

Kitchen

- ✓ Fully Fitted

Category

- ✓ Bargain
- ✓ Holiday Homes
- ✓ Investment
- ✓ Luxury
- ✓ Resale

Orientation

- ✓ East
- ✓ South
- ✓ West

Views

- ✓ Sea
- ✓ Panoramic
- ✓ Garden

Garden

- ✓ Communal

Condition

- ✓ Good

Features

- ✓ Covered Terrace
- ✓ Near Transport
- ✓ Private Terrace
- ✓ Marble Flooring
- ✓ Fiber Optic

Parking

- ✓ Street
- ✓ More Than One

Pool

- ✓ Communal

Furniture

- ✓ Fully Furnished

Utilities

- ✓ Electricity

















































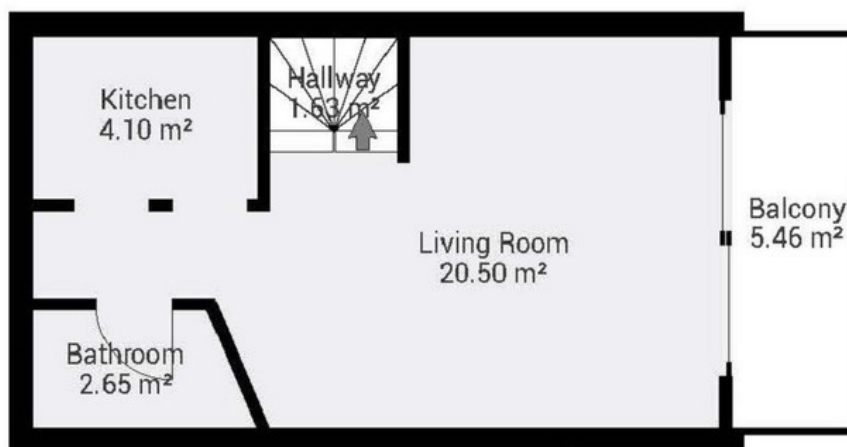




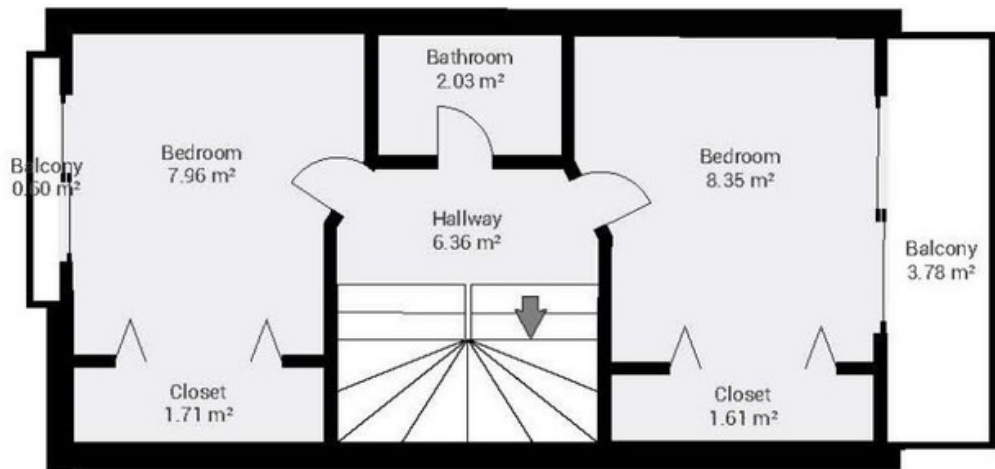




TOTAL AREA: 34.32 m² • LIVING AREA: 13.51 m² • ROOMS: 4



TOTAL AREA: 32.36 m² • LIVING AREA: 18.05 m² • ROOMS: 6



TOTAL AREA: 36.00 m² • LIVING AREA: 15.18 m² • ROOMS: 4

