

Ref.-ID: MIBGR4679404

La Quinta

Apartment

IBI: 651 EUR / year

Rubbish: 18 EUR / year



3



2



115 m2

This luxury ground floor apartment is located in the beautiful area of La Quinta, Benahavis. With its stunning frontline golf location, this property offers breathtaking views of the surrounding countryside, mountains, and golf course. Situated in a small and gated community, this apartment provides a secure and peaceful living environment. This south west apartment features 3 spacious bedrooms and 2 bathrooms, including a beautiful en-suite bathroom in the master bedroom, with a private dressing room. The built area of the apartment is 115m², providing ample space for comfortable living. Additionally, there is a private terrace with an area of 66m² that leads directly into the garden, perfect for enjoying the outdoor scenery and entertaining guests. This apartment is equipped with all the modern amenities you need for a luxurious lifestyle. It includes air conditioning throughout, ensuring a comfortable indoor climate all year round. The fully fitted kitchen is equipped with high-quality appliances, making it a pleasure to cook and entertain. The apartment also features a spacious living/dining area, providing plenty of space for relaxation and socializing that opens onto a very large wrap around covered terrace. This exclusive community is made up of 3 blocks of apartments, 6 apartments per block. Other notable features of this property includes 1 storage room, and 2 private garages. The apartment is in excellent condition and is ready to move in. With its close proximity to amenities, transport links, and the beach, this apartment offers convenience and easy access to everything you need.

Setting

- ✓ Close To Golf
- ✓ Close To Shops
- ✓ Close To Town
- ✓ Close To Schools

Climate Control

- ✓ Air Conditioning

Kitchen

- ✓ Fully Fitted
- ✓ Partially Fitted

Orientation

- ✓ South West

Views

- ✓ Mountain
- ✓ Golf
- ✓ Country
- ✓ Panoramic
- ✓ Garden

Garden

- ✓ Communal

Condition

- ✓ Good
- ✓ New Construction

Features

- ✓ Covered Terrace
- ✓ Lift
- ✓ Fitted Wardrobes
- ✓ Near Transport
- ✓ Private Terrace
- ✓ Storage Room
- ✓ Ensuite Bathroom
- ✓ Double Glazing

Security

- ✓ Alarm System

Pool

- ✓ Communal

Furniture

- ✓ Not Furnished

Parking

- ✓ Private



















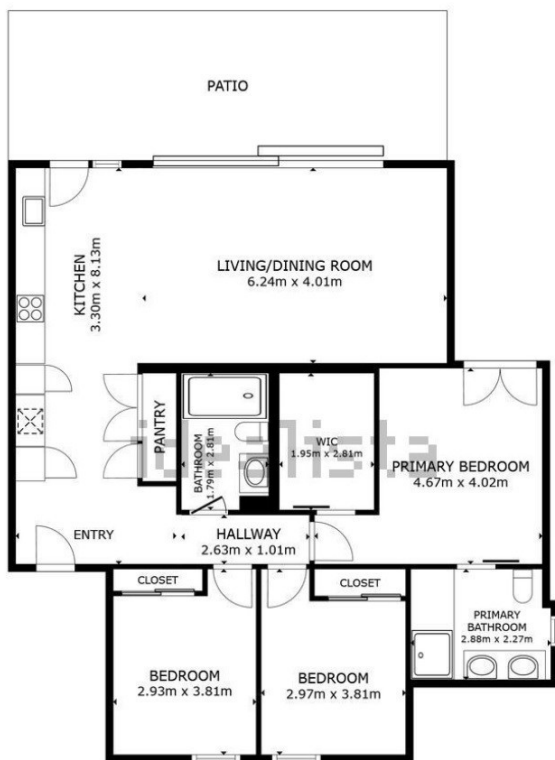
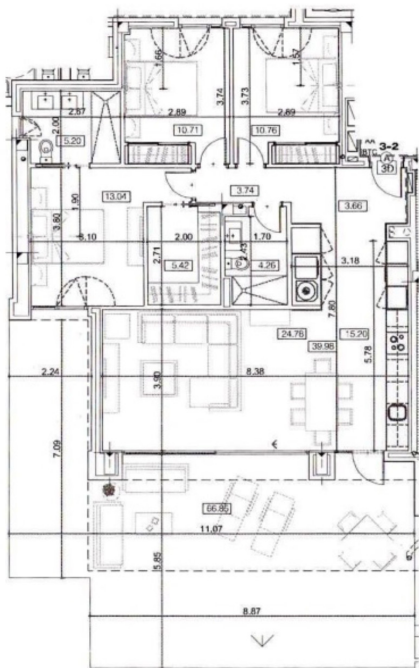












FLOOR PLAN

SIZES AND DIMENSIONS ARE APPROXIMATE, ACTUAL MAY VARY.