

Ref.-ID: MIBGR4776928

Fuengirola

Apartment

Community: 708 EUR / year

IBI: 395 EUR / year

Rubbish: 76 EUR / year



2



1



84 m2

Discover this wonderful penthouse in an unbeatable location that will captivate you from the first moment. Perfect for those looking for comfort, functional design and spectacular views of the sea. Upon entering, you will be greeted by a spacious and bright living room with large windows that frame stunning views of the sea. The living room integrates perfectly with the kitchen, creating a cozy and practical space. From here, you access a beautiful terrace, ideal for enjoying your morning coffee or a sunset drink while admiring the tones of twilight. Facing south, this terrace receives sun almost all day, becoming a natural extension of the living room, where you can relax and enjoy the views. The penthouse has two bedrooms, a large bathroom with shower and a private sauna with its own shower room, located at the rear. The sauna offers impressive views of the mountain and the emblematic figure of "El Toro". Additionally, there is another terrace at the rear, facing west, perfect for watching the beautiful sunsets over the mountains. This penthouse is sold fully furnished, with large built-in wardrobes in both bedrooms. It includes a parking space and is part of an urbanization that offers a community pool, as well as community gardens. The location in the lower area of Torreblanca is ideal. It is close to the beach, shops, restaurants, daycare, public transportation, train station and has easy access to the highway. Despite being close to everything, the area is very quiet, which makes it a perfect place both to live and to invest. With an existing tourist license, this penthouse guarantees a constant rental throughout the year. Don't miss the opportunity to live in this beautiful penthouse and enjoy a relaxed life on the sunny coast. Contact us today for more information and to schedule a showing!

Setting

- ✓ Beachside
- ✓ Close To Port
- ✓ Close To Shops
- ✓ Close To Town
- ✓ Close To Schools

Climate Control

- ✓ Air Conditioning

Kitchen

- ✓ Fully Fitted

Orientation

- ✓ South East
- ✓ South

Views

- ✓ Sea
- ✓ Mountain

Garden

- ✓ Communal

Condition

- ✓ Excellent
- ✓ Good

Features

- ✓ Covered Terrace
- ✓ Lift
- ✓ Fitted Wardrobes
- ✓ Near Transport
- ✓ Private Terrace
- ✓ Sauna
- ✓ Double Glazing

Parking

- ✓ Underground
- ✓ Private

Pool

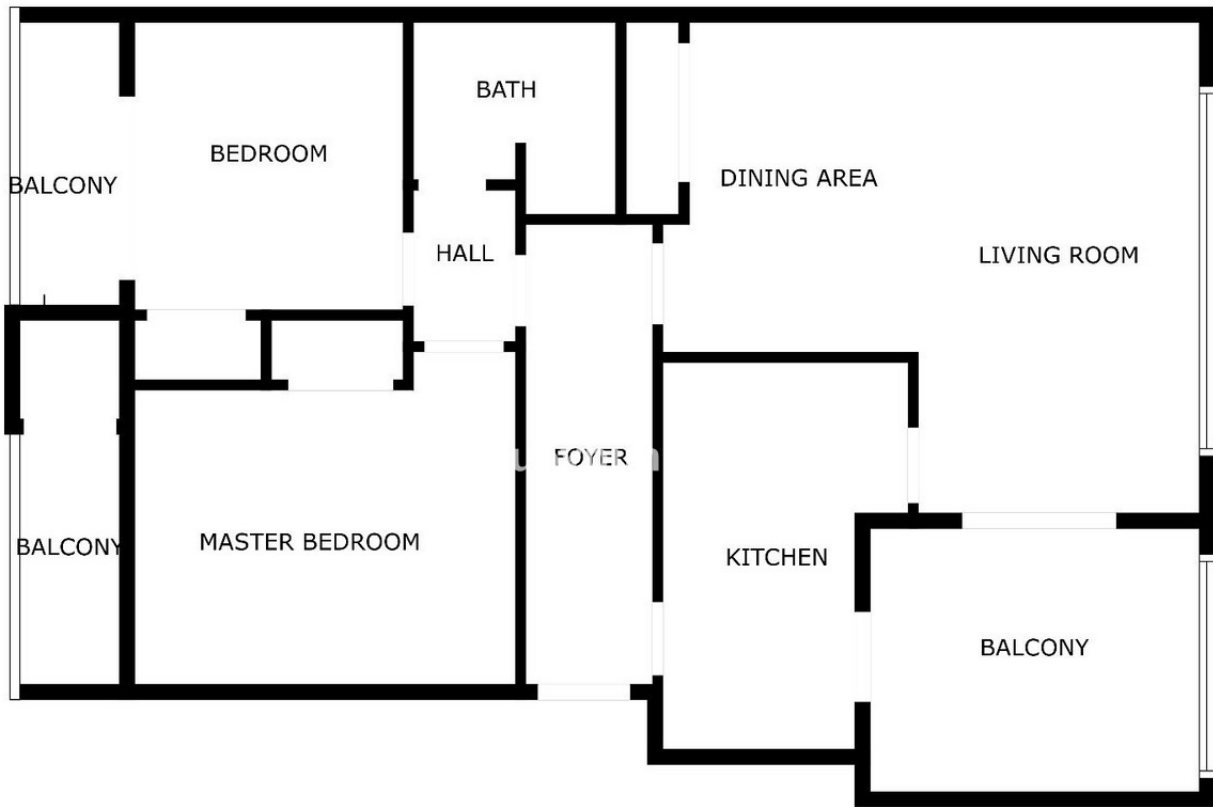
- ✓ Communal

Furniture

- ✓ Part Furnished

Category

- ✓ Investment



SIZES ARE APPROXIMATE, ACTUAL MAY VARY.









