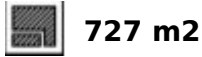


Ref.-ID: MIBGR4802929

Hacienda Las Chapas

Plot



Premium Plot with Luxury Villa Project & Sea Views - Hacienda Las Chapas, Marbella Discover a unique opportunity to build your dream home in one of Marbella's most prestigious and tranquil residential areas. This exceptional 1,933 m² plot comes with a fully designed project for a stunning contemporary villa of 727 m², created to embrace natural light, privacy, and the Mediterranean lifestyle. The future home is thoughtfully distributed over three levels plus a rooftop solarium, offering spacious open-plan living areas, floor-to-ceiling windows, and expansive terraces. The rooftop terrace provides beautiful sea views, perfect for enjoying Marbella's year-round sunshine. The project also includes a private garden and swimming pool, ideal for outdoor living and entertaining. One of the key advantages of this property is the flexibility it offers: as the project is still in its early stage, the design and finishes can be tailored to your personal taste, allowing you to create a truly bespoke home without starting from scratch. Building license expected in July, enabling a fast and efficient start to construction. Whether you are looking for a permanent residence, a holiday home, or a smart investment in the Costa del Sol, this is a rare opportunity to secure a prime property in a highly sought-after location.

Setting

- ✓ Close To Golf
- ✓ Close To Sea
- ✓ Close To Schools
- ✓ Urbanisation

Orientation

- ✓ South
- ✓ South West

Condition

- ✓ New Construction

Pool

- ✓ Private



















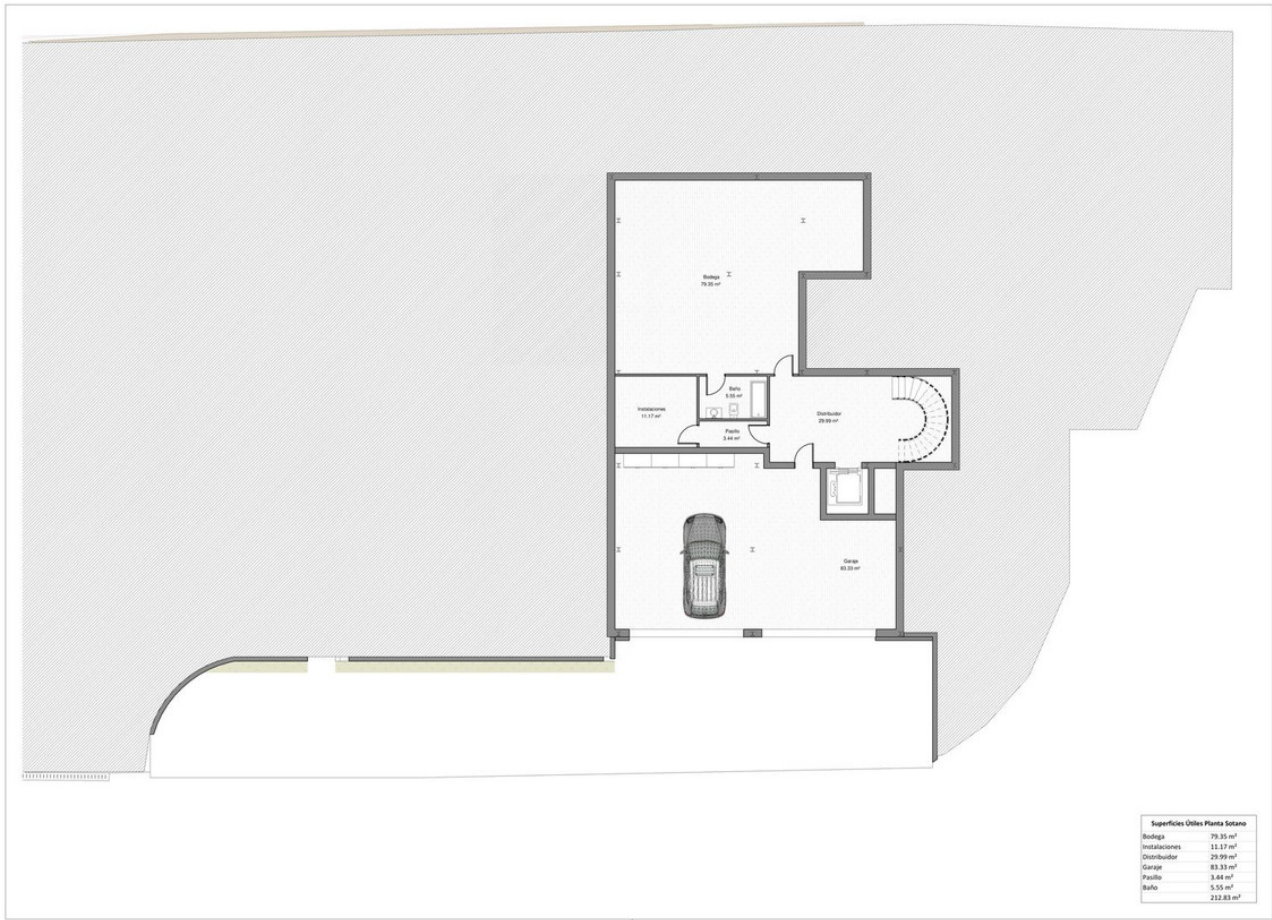


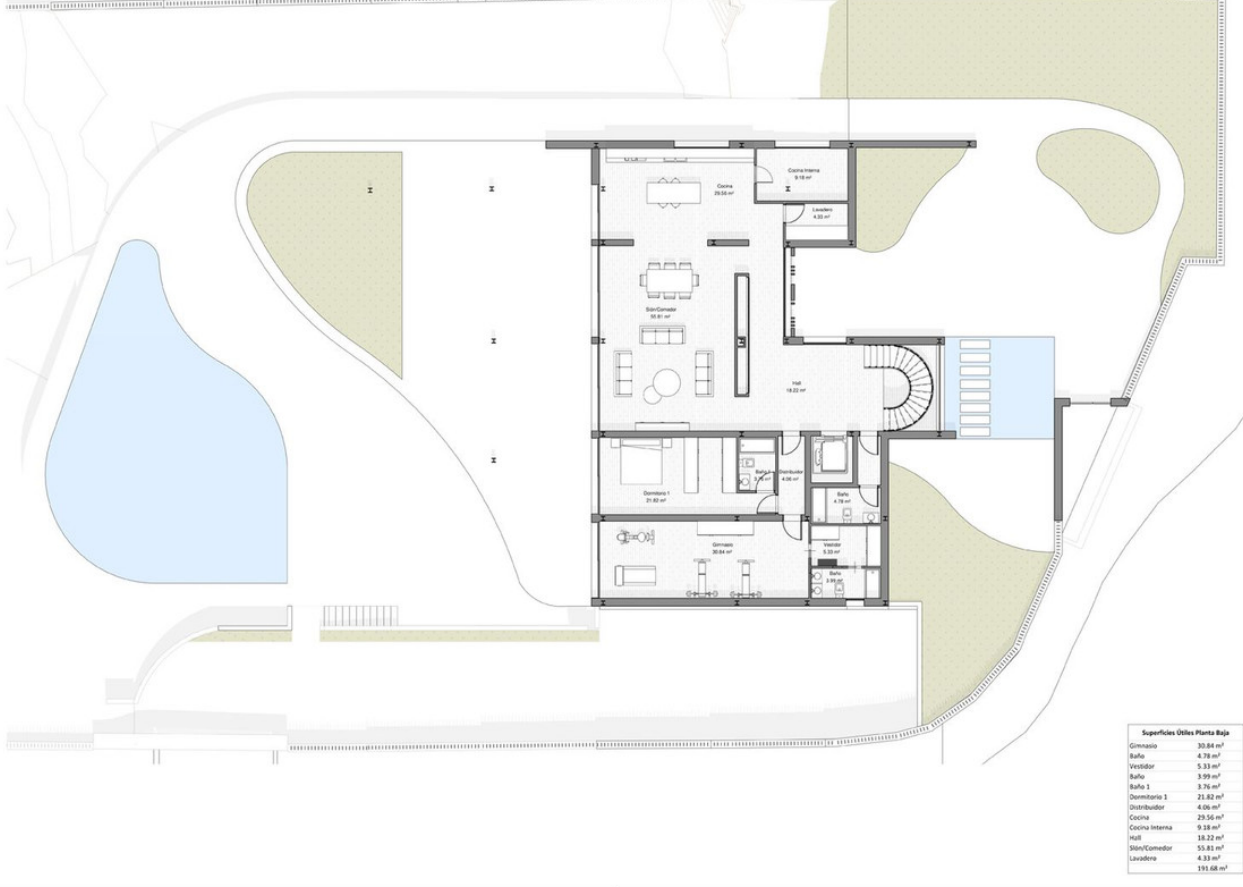






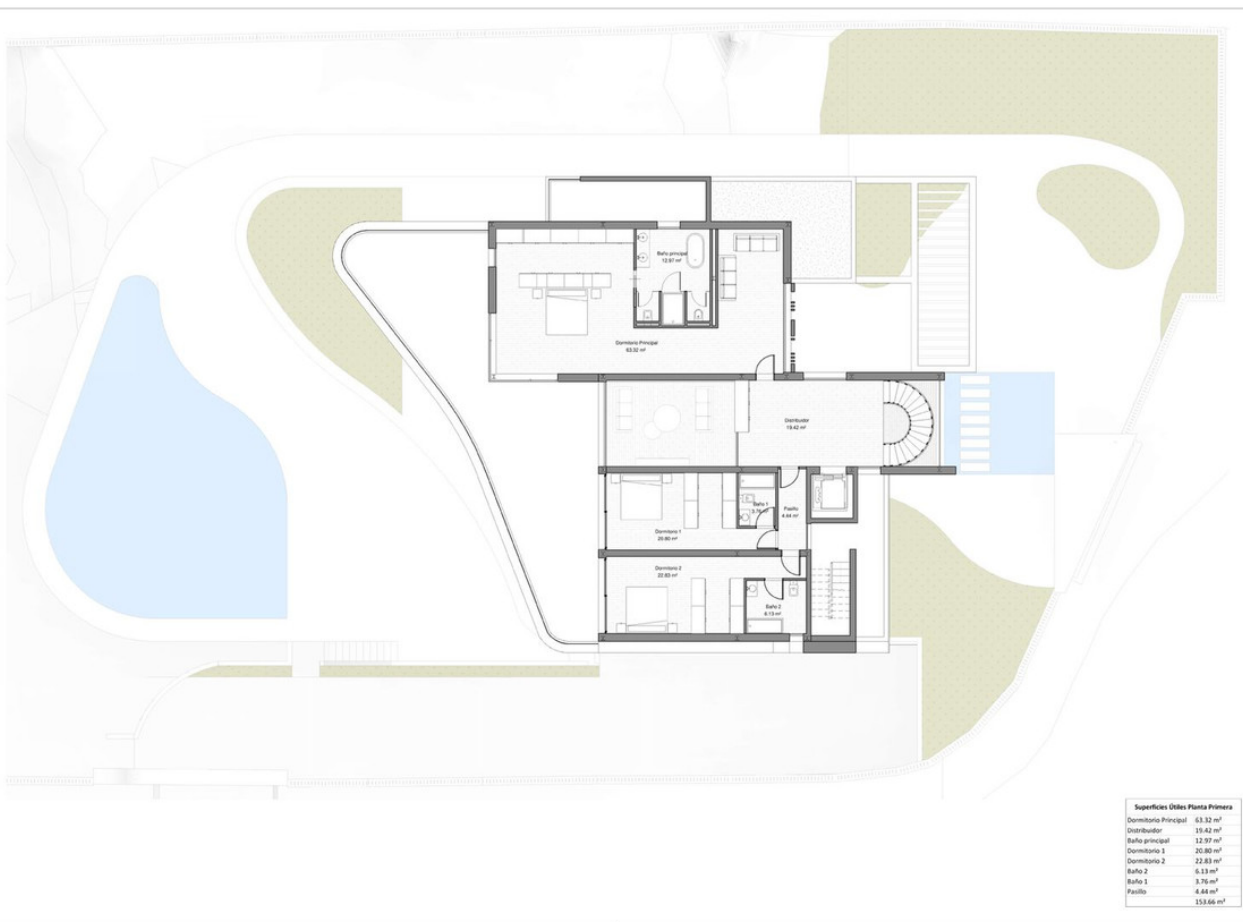






Superficies Útiles Planta Baja

Gimnasio	30.84 m ²
Baño	4.79 m ²
Wc/dor	5.33 m ²
Baño	5.99 m ²
Baño 1	5.76 m ²
Dormitorio 1	21.82 m ²
Distribuidor	4.06 m ²
Cocina	20.24 m ²
Cocina Interna	9.18 m ²
Hall	18.22 m ²
Bar/Comedor	30.84 m ²
Lavadero	4.33 m ²
Total	191.68 m²



Superficies Útiles Planta Primera

Dormitorio Principal	63.32 m ²
Distribuidor	18.42 m ²
Baño principal	12.97 m ²
Dormitorio 1	20.80 m ²
Dormitorio 2	12.83 m ²
Baño 2	6.13 m ²
Baño 1	5.76 m ²
Público	6.48 m ²
Total	159.66 m²

