

**Ref.-ID: MIBGR4876951**

**Fuengirola**

**Commercial**



Discover this incredible opportunity to acquire a commercial property in the heart of Fuengirola, just a few steps from the beautiful beaches. Located in a high-traffic area, this premises is surrounded by residential and hotel buildings, ensuring a constant flow of customers. Property Features: - Total area of 400 m<sup>2</sup>, plus additional large front terrace and communal parking. - Occupies the entire ground floor, situated on a corner, with access from two streets. - Fully renovated and ready to operate. - Opening licence as a "Special Hospitality Establishment with Music" and smoke extraction. Premises Layout: - Bar and restaurant area. - Spacious kitchen equipped with a preparation area and storage space. - Two large rooms, ideal for various uses (presently in use as a trampoline park). - Two bathrooms (one adapted for disabled access). - Staff changing room with shower & toilet/storage. - Independent office. - Air conditioning throughout the premises for added comfort. This commercial property represents an excellent opportunity for any potential owner, whether to run a thriving business or as a source of income through a leasehold. Unbeatable Location: Situated near the main road connecting Los Boliches and Fuengirola, this premises benefits from a constant flow of residents and tourists heading to the beach, located just a few metres away. The area is surrounded by hotels, apartments, bars, and restaurants, making it an ideal spot for any type of business. Additionally, the local community is dense and diverse, with a great mix of national and foreign residents. Additional Opportunities: - Possibility to convert the premises into 7 tourist apartments. Don't miss the chance to invest in this exceptional property! For more information, please feel free to contact us

**Setting**

- ✓ Beachside
- ✓ Close To Port
- ✓ Close To Shops
- ✓ Close To Town
- ✓ Close To Schools

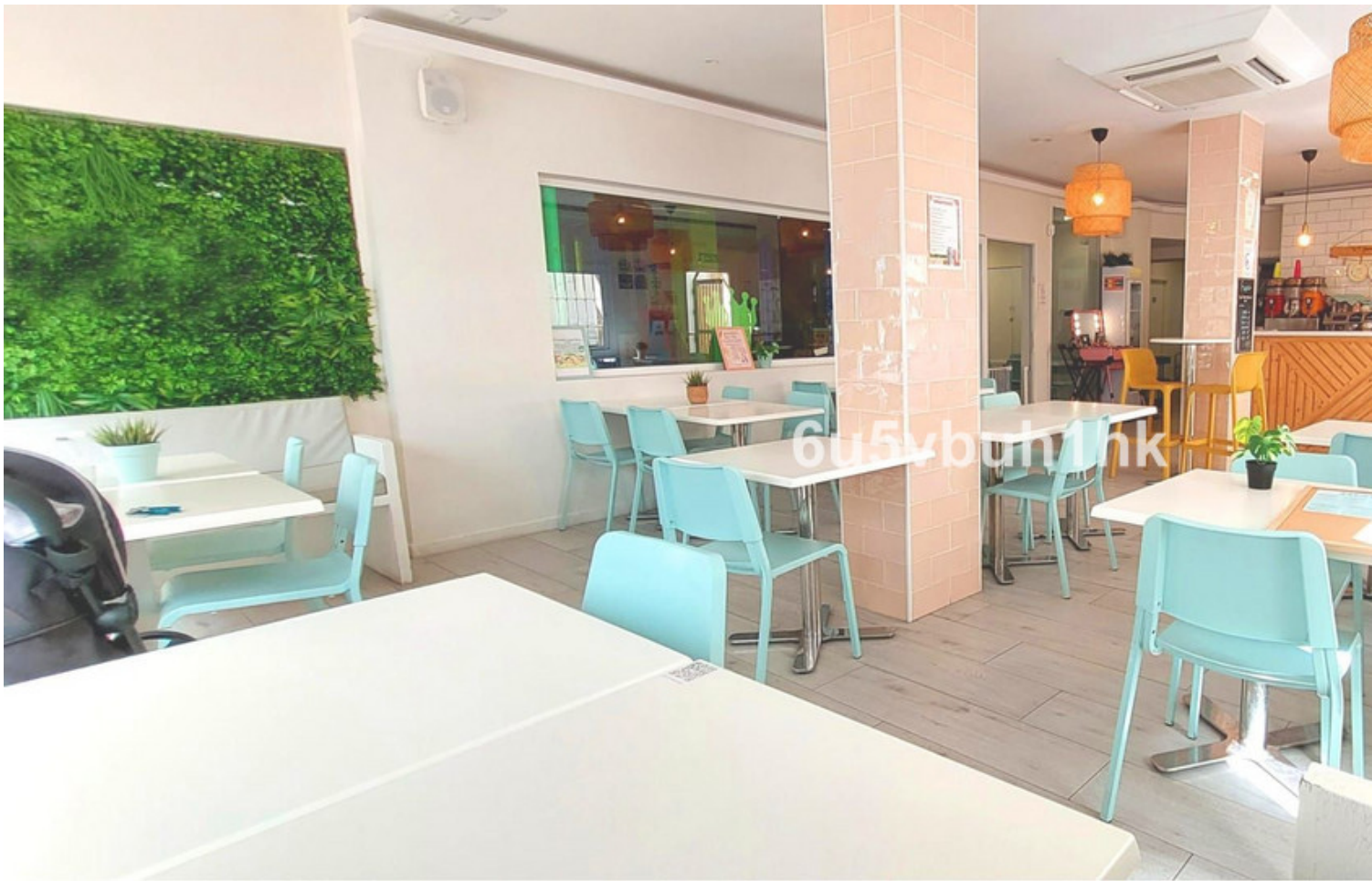
**Climate Control**

- ✓ Air Conditioning

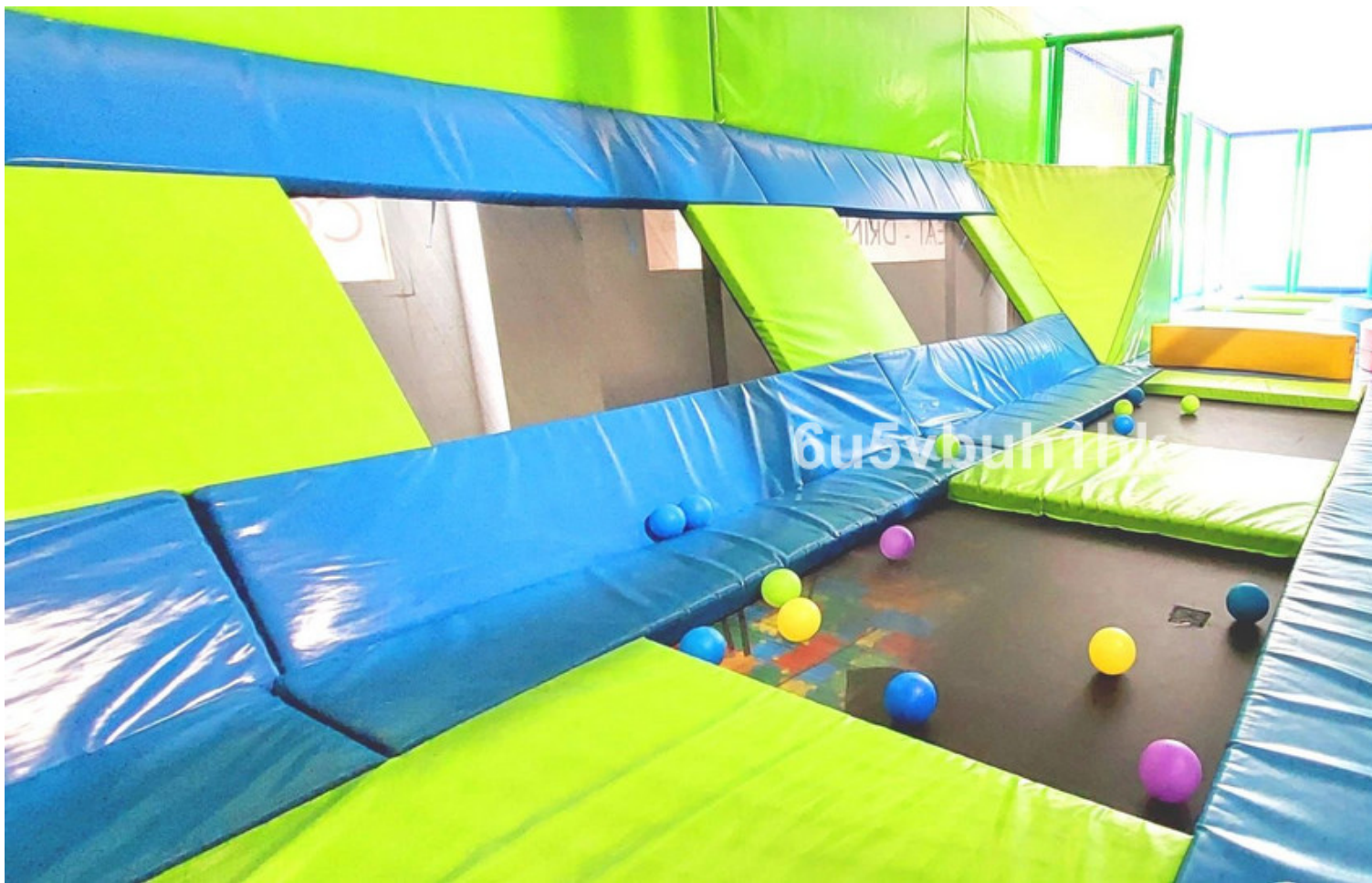
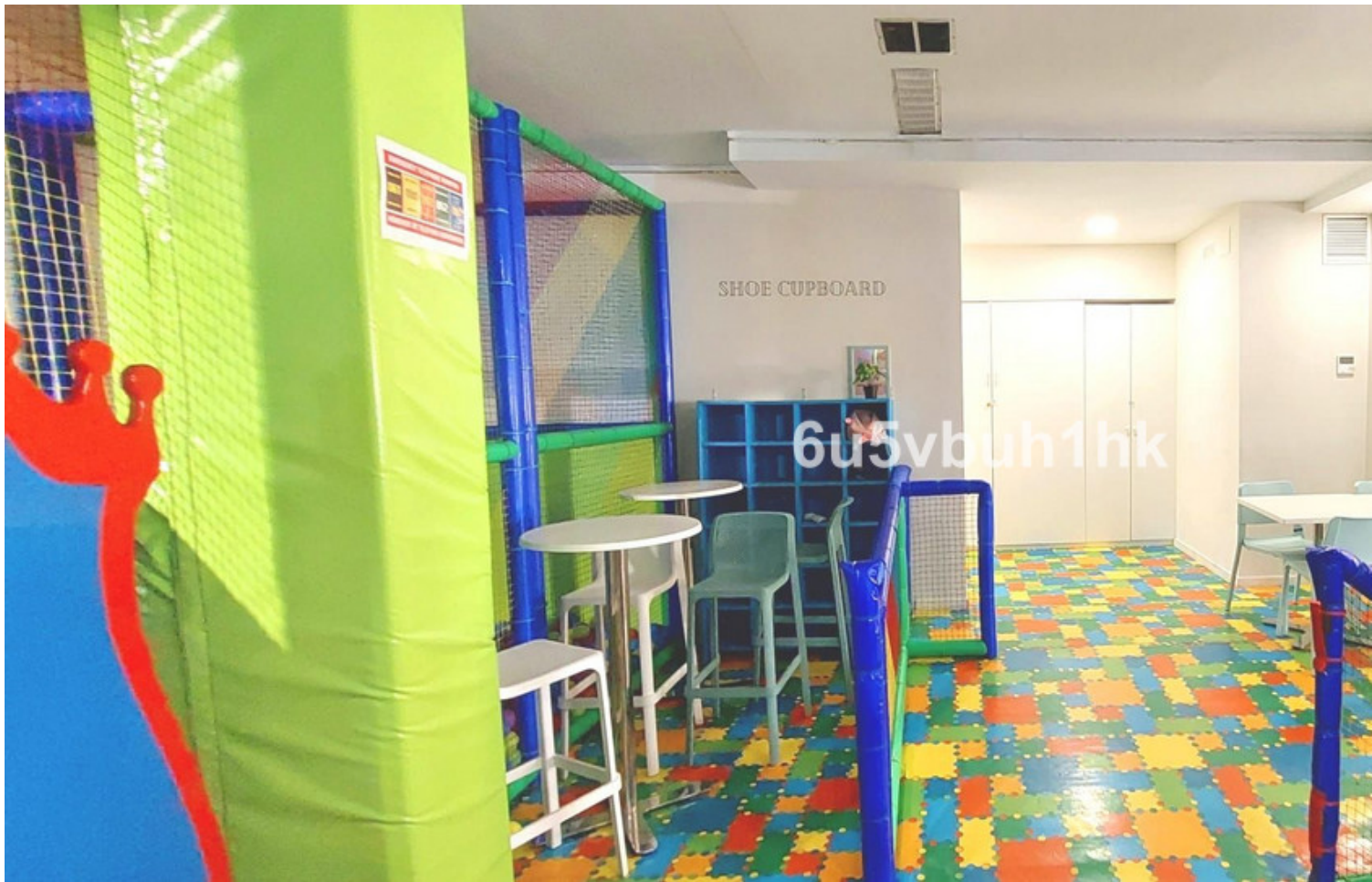
**Features**

- ✓ Near Transport





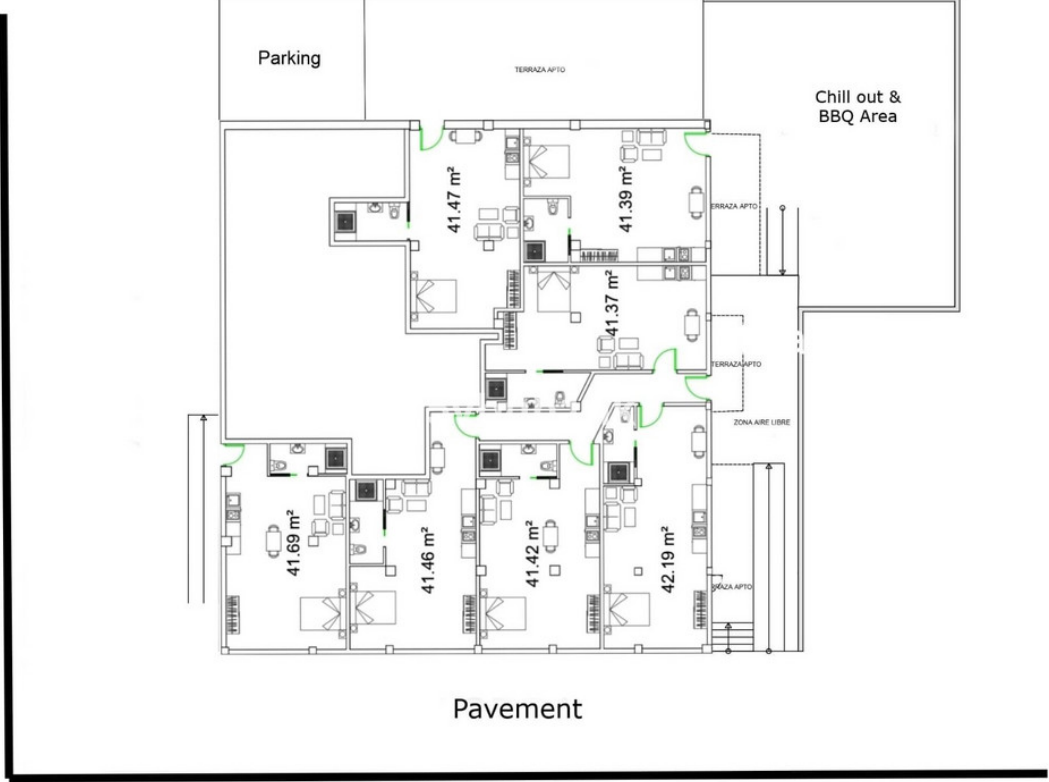












Street to the beach

