



Sales - House - Benahavís
2.150.000€

www.mibgroup.es
+34 662 58 96 58
info@mibgroup.es

Community: 2,364 EUR / year

IBI: 1,761 EUR / year

Rubbish: 18 EUR / year

 5

 4

 761 m2

 1217 m2

Well-Priced Andalusian Villa for Sale in La Alquería, Benahavís Bright and Inviting: The first two photos show a digitally enhanced exterior color to illustrate the villa’s potential appearance. The owner is willing to paint the house in your preferred color before handover, making this a move-in ready home tailored to your taste. Practical and Comfortable: This well-maintained Andalusian-style villa combines traditional charm with modern convenience. With spacious interiors and a functional layout, it is ideal as a family home or a sound long-term investment. Location: La Alquería is an exclusive community of villas and plots centred around Atalaya Golf and Country Club in Benahavís. Close to bilingual schools, local supermarkets, restaurants, and bars, with Estepona, Puerto Banús, and Marbella centre less than 15 minutes by car. Property Highlights: Outdoor Oasis: Heated pool, waterfall, and jacuzzi in landscaped gardens—perfect for year-round enjoyment. Spacious Living: Five double bedrooms, four en-suite. Master suite with vaulted ceiling and round jacuzzi bathtub. Versatile Spaces & Parking: Secure garage for five cars, additional parking outside, and a basement suitable for home cinema or games room. Elevator connecting all levels. Views & Security: Stunning panoramic views of the sea and La Concha Mountain. Top-tier security with video intercom, safety glass, 24-hour surveillance, and patrol cars within the urbanization. Exceptional Value: This villa represents a rare opportunity to purchase a well-priced, move-in ready property in one of Costa del Sol’s most sought-after areas. Ideal for families or as a sound investment, it offers a lifestyle of comfort, privacy, and potential growth. Contact: For more information or to schedule a viewing, please reach out today.

- Setting

✓ Close To Golf

Climate Control

✓ Air Conditioning

✓ Fireplace

Kitchen

✓ Fully Fitted

Category

✓ Resale
- Orientation

✓ West

Views

✓ Sea

✓ Mountain

✓ Golf

Garden

✓ Private

✓ Easy Maintenance
- Condition

✓ Excellent

Features

✓ Covered Terrace

✓ Lift

✓ Fitted Wardrobes

✓ Private Terrace

✓ Solarium

✓ Games Room

✓ Storage Room

✓ Ensuite Bathroom

✓ Access for people with reduced mobility

✓ Marble Flooring

✓ Jacuzzi

✓ Bar

✓ Basement

Security

✓ Electric Blinds

✓ Entry Phone

✓ Alarm System

✓ Safe
- Pool

✓ Private

✓ Heated

Furniture

✓ Fully Furnished

Parking

✓ Garage

✓ Private





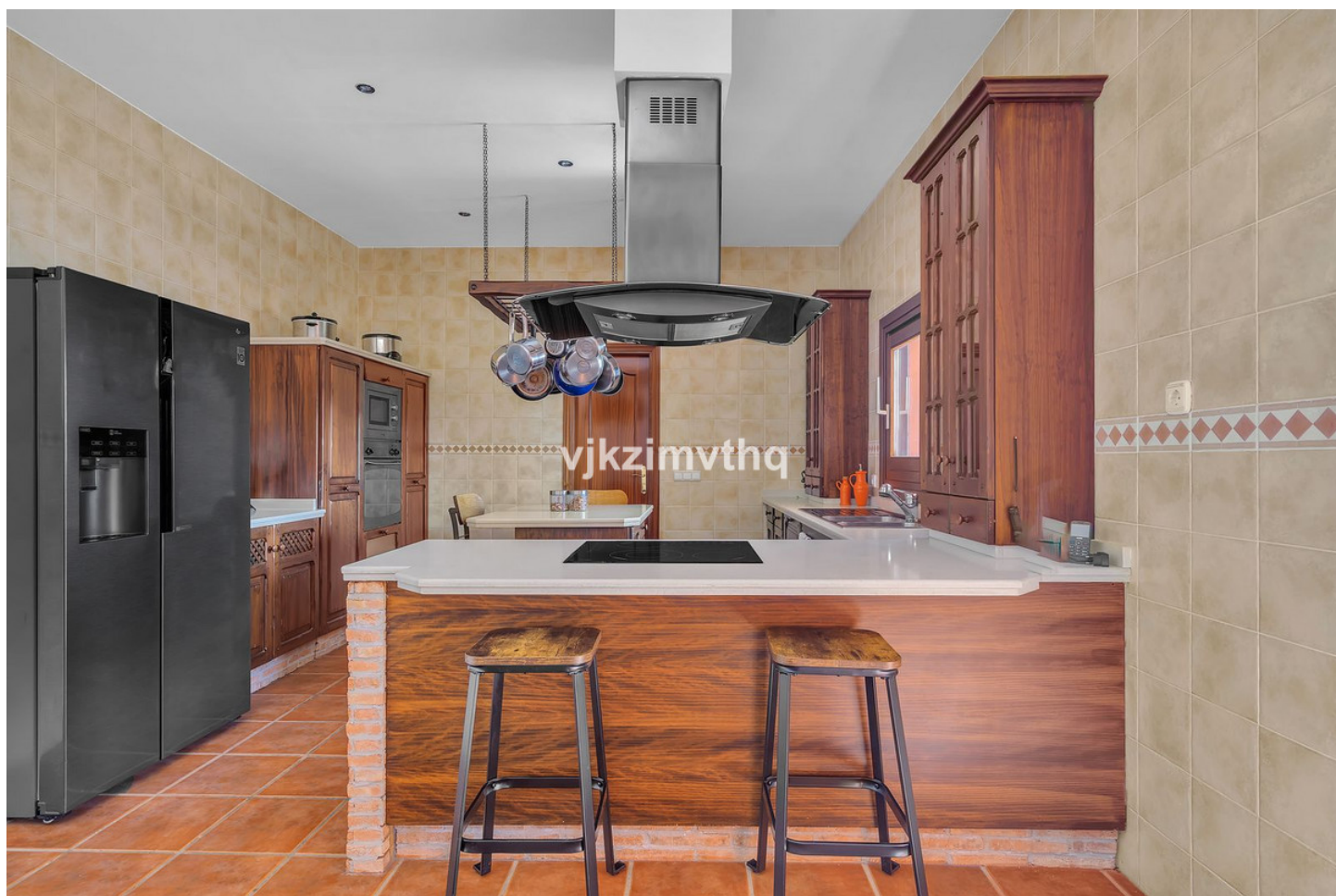












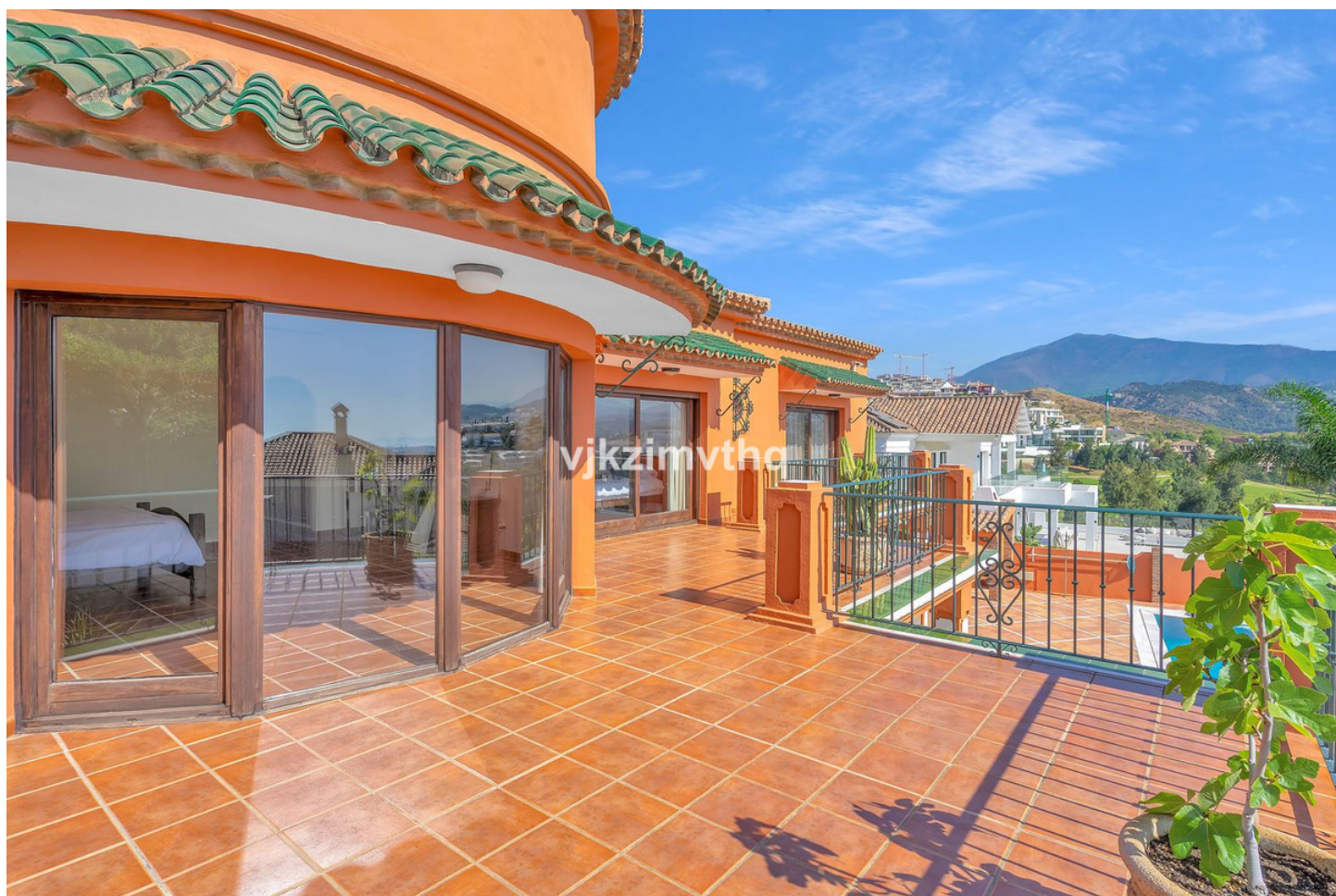














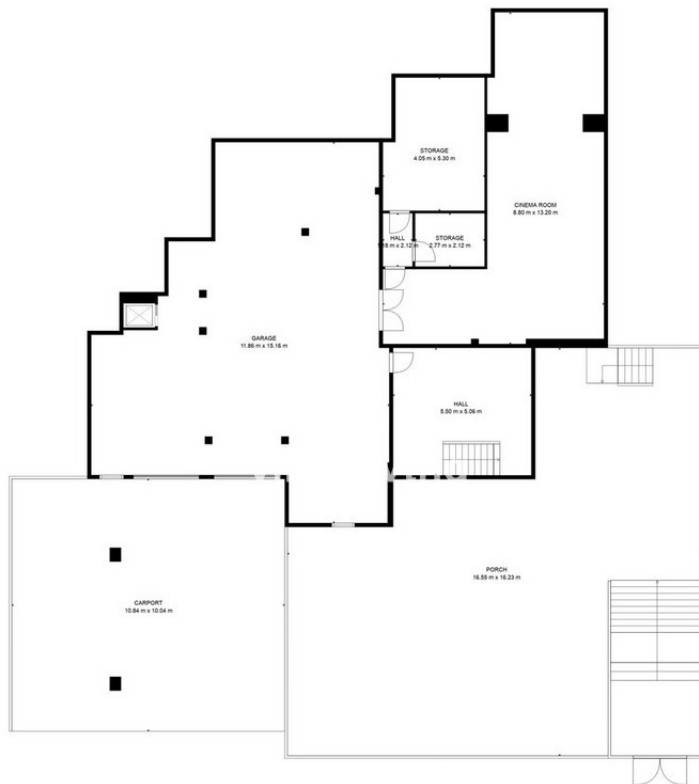
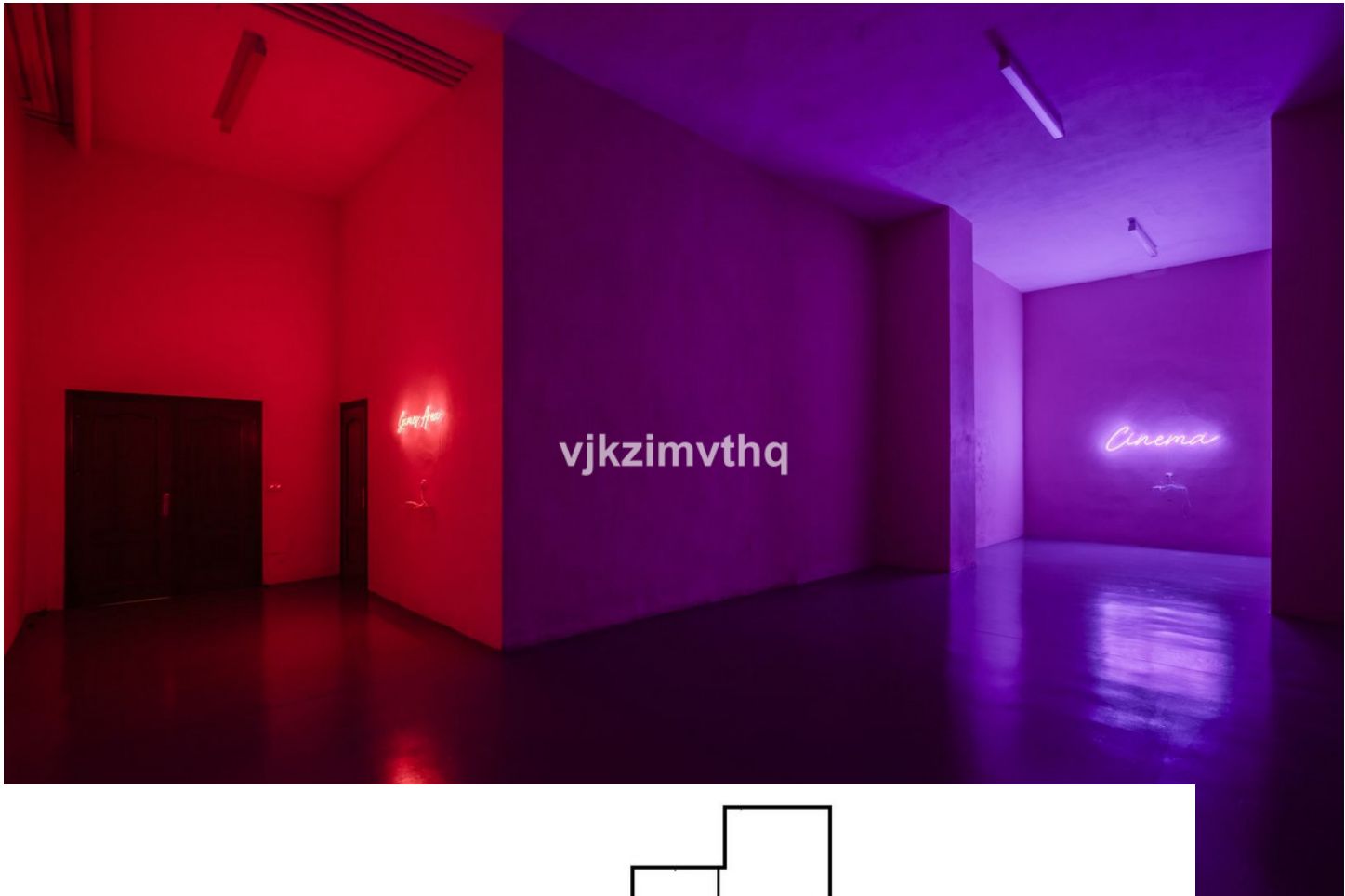




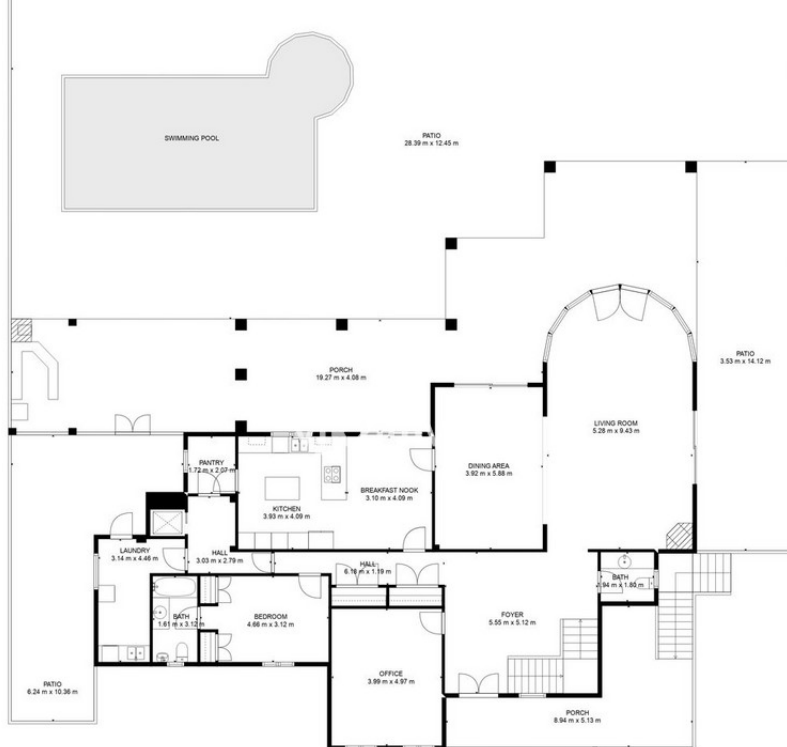






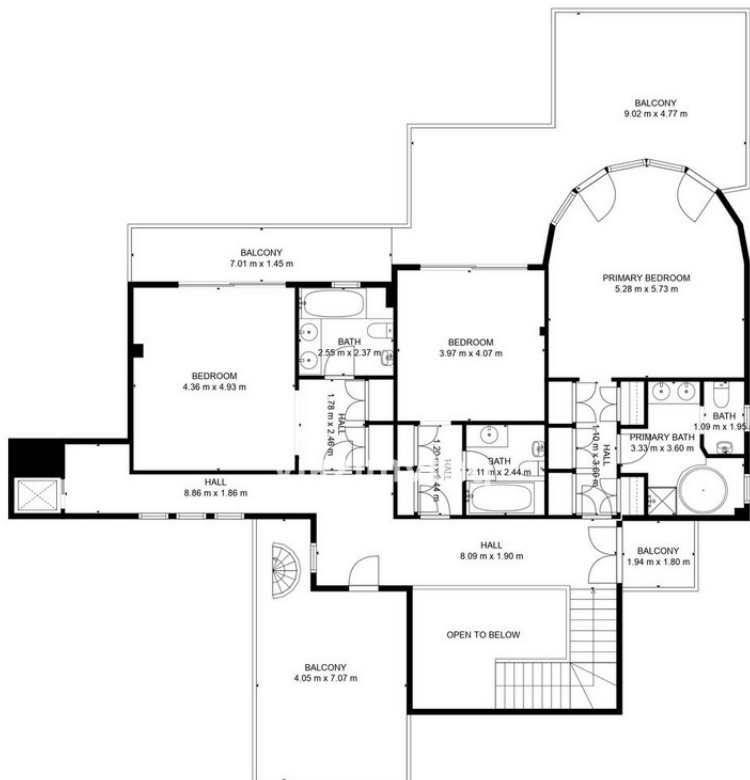


TOTAL: 461 m2
 FLOOR 0: 108 m2, FLOOR 1: 207 m2, FLOOR 2: 146 m2, FLOOR 3: 0 m2
 EXCLUDED AREAS: GARAGE: 131 m2, STORAGE: 26 m2, PORCH: 351 m2,
 CARPORT: 109 m2, PATIO: 334 m2, BALCONY: 74 m2,
 OPEN TO BELOW: 11 m2, TERRACE: 44 m2
 FLOOR PLAN CREATED BY CUBICASA APP. MEASUREMENTS DEEMED HIGHLY RELIABLE BUT NOT GUARANTEED.



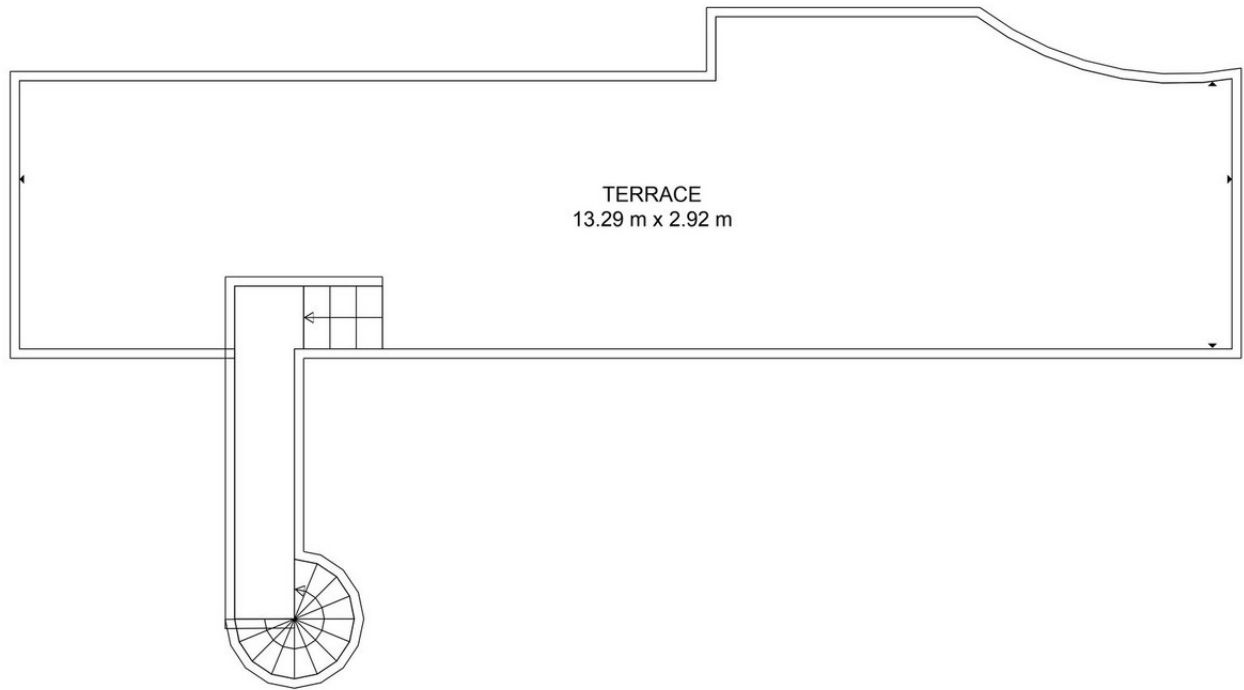
TOTAL: 461 m²
 FLOOR 0: 108 m², FLOOR 1: 207 m², FLOOR 2: 146 m², FLOOR 3: 0 m²
 EXCLUDED AREAS: GARAGE: 131 m², STORAGE: 26 m², PORCH: 351 m²,
 CARPORT: 109 m², PATIO: 334 m², BALCONY: 74 m²,
 OPEN TO BELOW: 11 m², TERRACE: 44 m²

FLOOR PLAN CREATED BY CUBICASA APP. MEASUREMENTS DEEMED HIGHLY RELIABLE BUT NOT GUARANTEED.



TOTAL: 461 m²
 FLOOR 0: 108 m², FLOOR 1: 207 m², FLOOR 2: 146 m², FLOOR 3: 0 m²
 EXCLUDED AREAS: GARAGE: 131 m², STORAGE: 26 m², PORCH: 351 m²,
 CARPORT: 109 m², PATIO: 334 m², BALCONY: 74 m²,
 OPEN TO BELOW: 11 m², TERRACE: 44 m²

FLOOR PLAN CREATED BY CUBICASA APP. MEASUREMENTS DEEMED HIGHLY RELIABLE BUT NOT GUARANTEED.



TOTAL: 461 m2
FLOOR 0: 108 m2, FLOOR 1: 207 m2, FLOOR 2: 146 m2, FLOOR 3: 0 m2
EXCLUDED AREAS: GARAGE: 131 m2, STORAGE: 26 m2, PORCH: 351 m2,
CARPORT: 109 m2, PATIO: 334 m2, BALCONY: 74 m2,
OPEN TO BELOW: 11 m2, TERRACE: 44 m2

FLOOR PLAN CREATED BY CUBICASA APP. MEASUREMENTS DEEMED HIGHLY RELIABLE BUT NOT GUARANTEED.

