

**Ref.-ID: MIBGR4934050**

**Benalmadena**

**Plot**



**16513 m2**

Incredible land to build a hotel complex, aparthotel, also ideal as a sports hotel on an existing luxury base. This 16513m<sup>2</sup> plot has a total buildable area of more than 11500m<sup>2</sup>. Of which 65% is for the hotel rooms., allowing for about 250 rooms to be built. With an elegant restaurant and cafe, a paddle tennis club with 5 courts, a children's playground and an indoor playground and several rooms to host different events, it has successfully catered for multiple weddings in a single day. The total amount built at this current time is 4000m<sup>2</sup>. It is a privileged location, a stone's throw from the famous Torrequebrada golf course, designed by the renowned José Gancedo, and just a few minutes from the beautiful sandy beaches of the Costa del Sol (1,2km to be exact). From the prestigious Torrequebrada area you can find in the center of Benalmádena Costa, 8 minutes by car, 20 minutes from Malaga airport and 25 minutes from the center of Marbella. Contact us to find out more about this profitable investment, you won't be disappointed.

**Setting**

- ✓ Close To Port
- ✓ Close To Shops
- ✓ Close To Sea
- ✓ Close To Schools

**Category**

- ✓ Bargain
- ✓ Golf
- ✓ Holiday Homes

**Views**

- ✓ Sea
- ✓ Mountain
- ✓ Golf
- ✓ Country
- ✓ Panoramic

**Features**

- ✓ Paddle Tennis
- ✓ Restaurant On Site

**Garden**

- ✓ Private









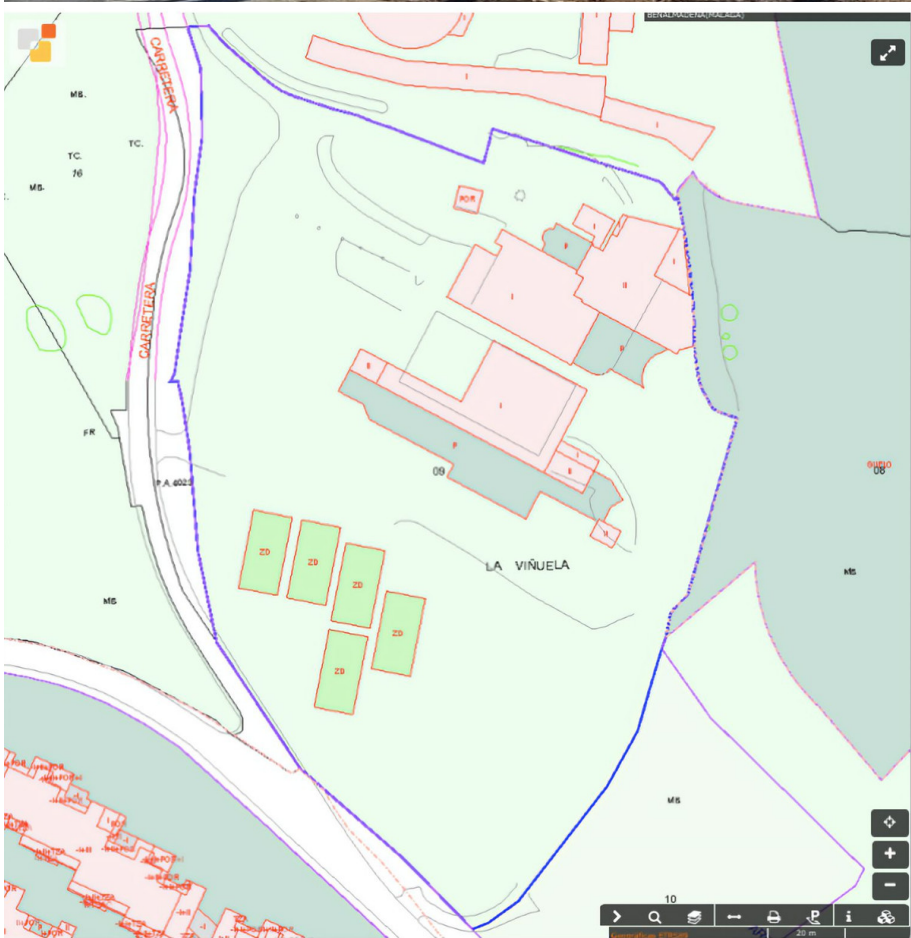


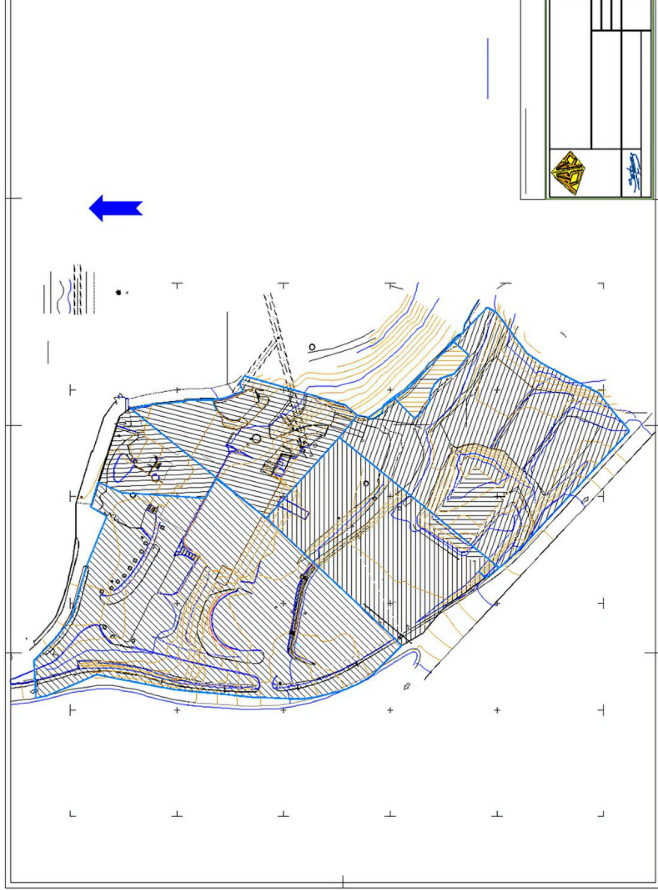












## BENALMÁDENA\*

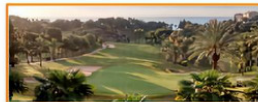


ESTUPA\*BUDISTA\*\*  
BENALMÁDENA\*PUEBLO\*

PUERTO\*MARINA



RESERVA\*DEL\*HIGUERÓN\*  
HOTEL\*HILTON\*



TORREQUEBRADA\*GOLF\*CLUB\*



HOTEL\*  
\*TORREQUEBRADA\*