



Sales - Apartment - Fuengirola
799.000€

www.mibgroup.es
+34 662 58 96 58
info@mibgroup.es

Ref.-ID: MIBGR4934299

Fuengirola

Apartment



3



2



117 m2



68 m2

Tucked away in the tranquil hills of El Higueron, this stylish newly built community is an exceptional residential urbanization that beautifully combines the best of luxury living, nature, and modern design. Just a short 3-minute walk from the renowned Higueron Resort, residents have easy access to exclusive amenities including the Sport Club, Spa, gourmet restaurants, a shopping center, and even the train station, ensuring ultimate convenience alongside indulgence. Set in the sun-drenched town of Fuengirola, the urbanization immerses you in the stunning Andalusian landscape, where sweeping views of lush greenery meet the gentle Mediterranean climate. The expansive natural surroundings provide the perfect backdrop for relaxation and outdoor adventures, with scenic hiking trails just steps from your doorstep. The serene Carvajal Beach, famous for its calm waters, is just 10 minutes away, offering the perfect escape to unwind by the sea. Designed to blend seamlessly with its surroundings, this stylish resale apartment offers spacious 3-bedroom, 2-bathroom home where nature and comfort coexist in perfect harmony. The apartment is equipped with underfloor heating, a private garden, a jacuzzi, and partial sea views, creating an elevated living experience that prioritizes both elegance and relaxation. Sustainability is at the heart of this development, with the community adhering to Breeam and Wellness certifications, ensuring eco-friendly living without compromising on luxury. The project spans over 20,000 square meters of lush Mediterranean vegetation and aromatic plants, providing a serene environment where nature lovers can truly feel at home. With six beautiful swimming pools scattered across the development, offering ample opportunities to enjoy the outdoors and create unforgettable moments with family and friends. Experience Mediterranean living at its finest, where every detail is designed to enhance your lifestyle and bring you closer to the natural beauty that surrounds you.

Setting

- ✓ Close To Port
- ✓ Close To Shops
- ✓ Close To Sea
- ✓ Close To Town
- ✓ Close To Schools
- ✓ Close To Marina
- ✓ Urbanisation

Climate Control

- ✓ Air Conditioning
- ✓ Pre Installed A/C
- ✓ Hot A/C
- ✓ Cold A/C
- ✓ U/F Heating
- ✓ U/F/H Bathrooms

Kitchen

- ✓ Fully Fitted

Utilities

- ✓ Electricity

Orientation

- ✓ South
- ✓ South West

Views

- ✓ Sea
- ✓ Garden
- ✓ Pool

Garden

- ✓ Communal
- ✓ Private
- ✓ Landscaped
- ✓ Easy Maintenance

Category

- ✓ Investment
- ✓ Luxury
- ✓ Resale

Condition

- ✓ Excellent
- ✓ New Construction

Features

- ✓ Covered Terrace
- ✓ Lift
- ✓ Fitted Wardrobes
- ✓ Near Transport
- ✓ Private Terrace
- ✓ Storage Room
- ✓ Utility Room
- ✓ Ensuite Bathroom
- ✓ Jacuzzi
- ✓ Double Glazing
- ✓ Fiber Optic

Security

- ✓ Gated Complex
- ✓ Entry Phone

Pool

- ✓ Communal

Furniture

- ✓ Not Furnished

Parking

- ✓ Underground
- ✓ Garage
- ✓ More Than One
- ✓ Private







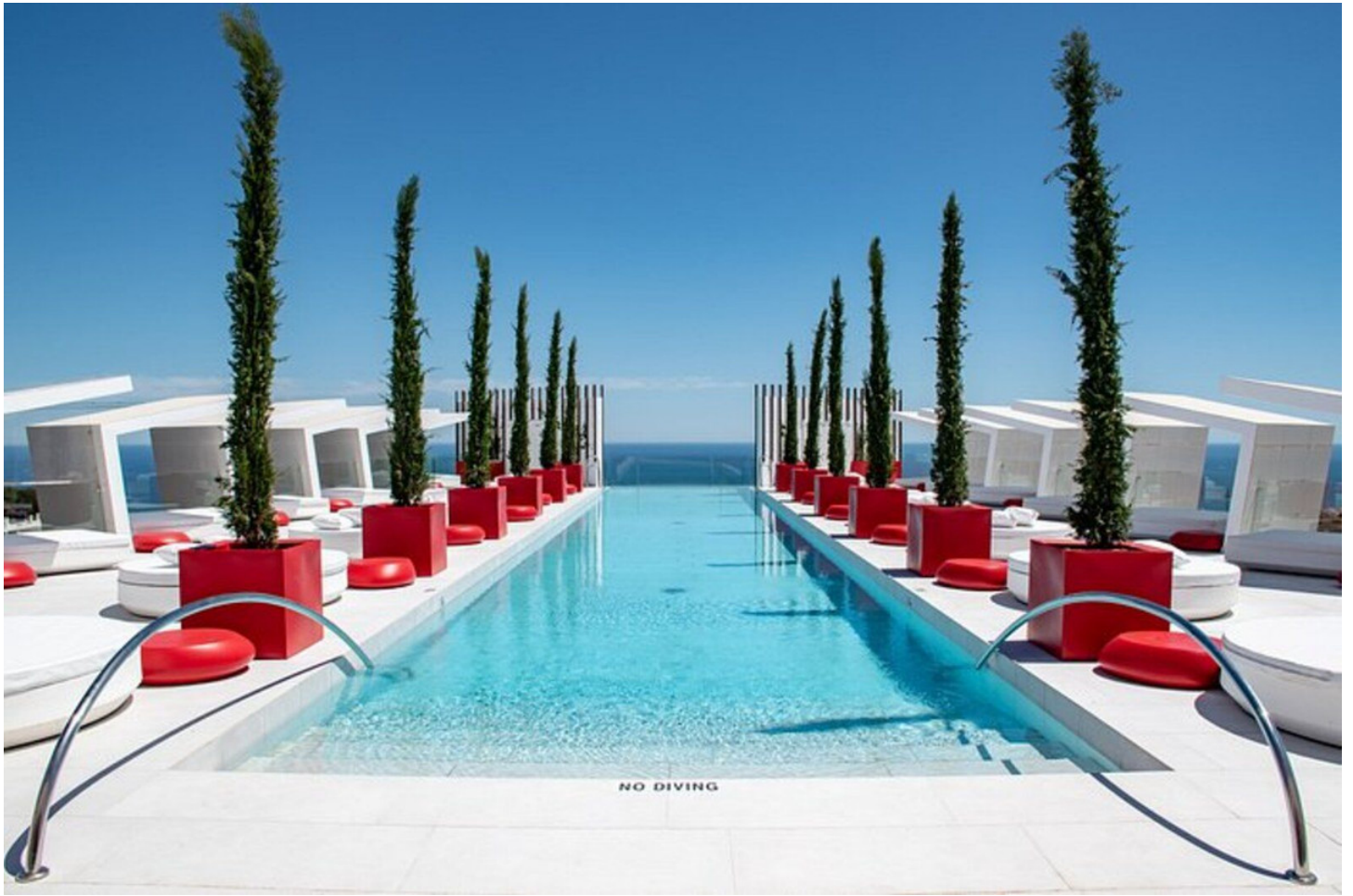




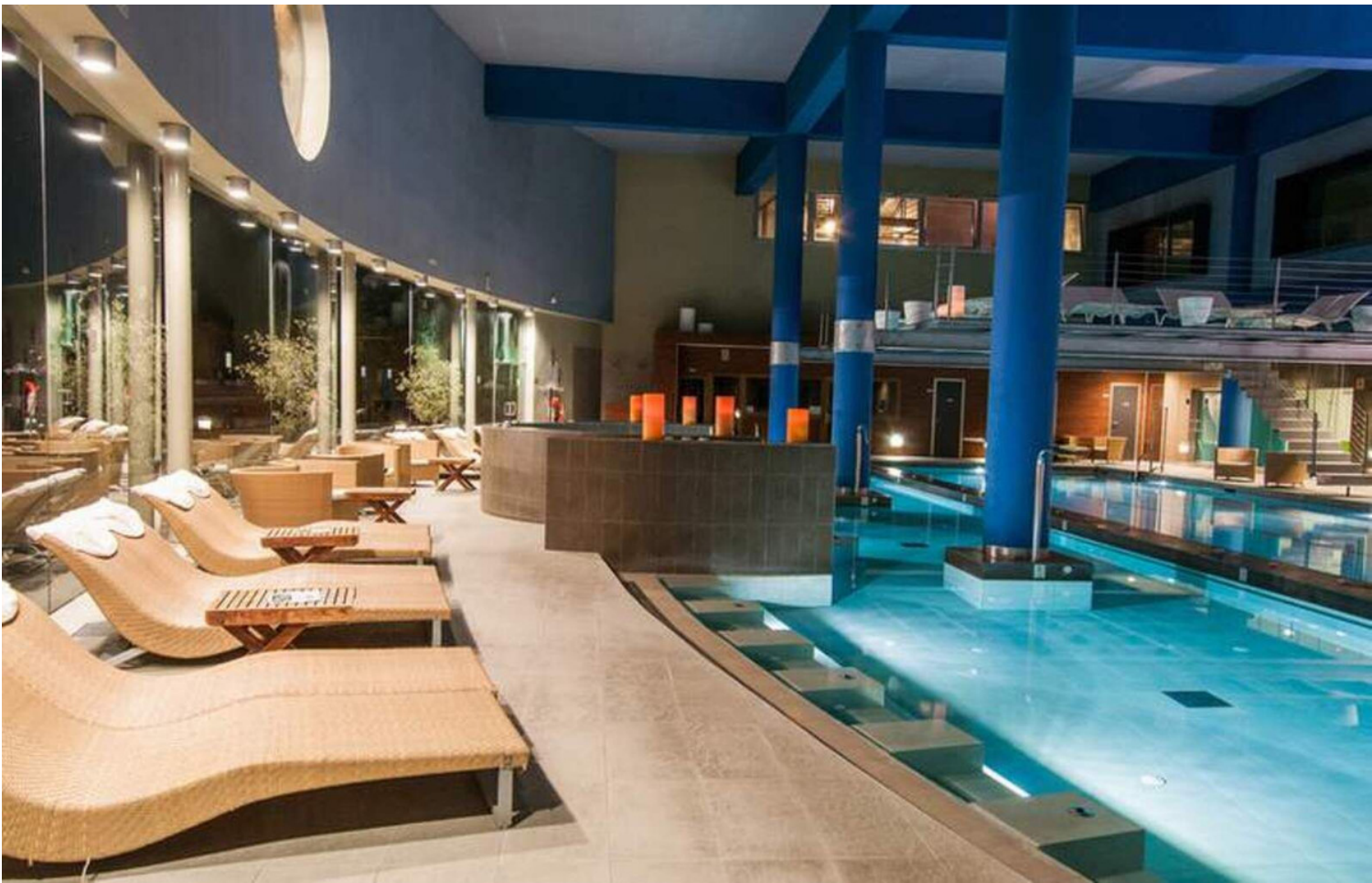


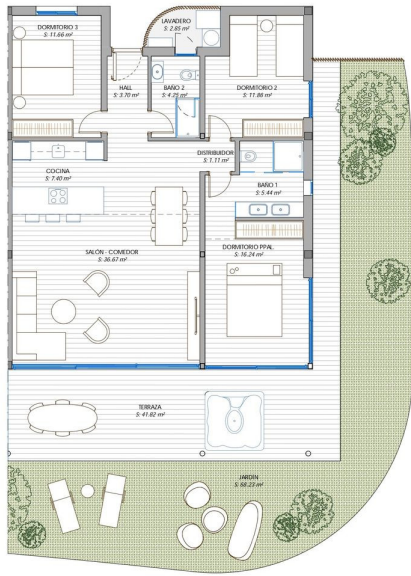




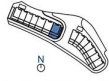








SUPERFICIE CONSTRUIDA VIVIENDA 116.90 m²
 SUPERFICIE CONSTRUIDA TERRAZA 41.82 m²
 SUPERFICIE AREA 88.23 m²
 SUPERFICIE EXTERIOR TOTAL 110.95 m²



PLANOS ORIENTATIVOS SELECTOS E IDENTIFICACIONES POR DISEÑOS EXISTENTES, TÉCNICOS COMPLEMENTARIOS, A.S. N.º 11-11-2004 EN PLANO DE INDICAR LAS SUPERFICIES DE CADA CANTONADA, RESOLVA 1754















