

Ref.-ID: MIBGR4981414

Benalmadena

House



3



4



552 m2



805 m2

Wonderful brand new luxury villa in one of the most sought-after areas of Benalmádena, in the heart of the Costa del Sol. The real star of the show is the exterior. Enjoy the magnificent sun terrace, designed for leisure and relaxation, with an impressive swimming pool with a waterfall that blends in with the blue of the sea and the green of the vegetation. Everything is brand new, in one of the most sought-after areas of Benalmádena (Higuerón) in the heart of the Costa del Sol. It has 3 bedrooms, 3 bathrooms, a guest toilet, a huge living room with a fireplace, a top-of-the-range kitchen and large windows with panoramic views. Gym. Some of the additional premium features: Solar panels, underfloor heating throughout the house, air conditioning/heating with airzone. The property boasts exceptional qualities. Huge living room with fireplace opening onto a 150 m² porch, where you can contemplate an oasis of peace, tranquillity and sea views. Kitchen open to the living room with top-of-the-range appliances, laundry area. The master bedroom has its own designer en-suite bathroom and an unrivalled dressing room. Everything straight out of a fairy tale.

Setting

- ✓ Town
- ✓ Close To Golf
- ✓ Close To Town
- ✓ Close To Schools
- ✓ Close To Forest
- ✓ Urbanisation

Climate Control

- ✓ Air Conditioning

Kitchen

- ✓ Fully Fitted

Utilities

- ✓ Electricity
- ✓ Drinkable Water
- ✓ Telephone

Orientation

- ✓ South

Views

- ✓ Sea
- ✓ Panoramic
- ✓ Garden
- ✓ Pool
- ✓ Forest

Garden

- ✓ Private

Category

- ✓ Luxury
- ✓ Resale
- ✓ Contemporary

Condition

- ✓ Excellent

Features

- ✓ Fitted Wardrobes
- ✓ Near Transport
- ✓ Private Terrace
- ✓ Satellite TV
- ✓ Gym
- ✓ Storage Room
- ✓ Ensuite Bathroom
- ✓ Barbeque
- ✓ Double Glazing
- ✓ Courtesy Bus
- ✓ Basement

Security

- ✓ Gated Complex
- ✓ Entry Phone

Pool

- ✓ Private

Furniture

- ✓ Optional

Parking

- ✓ More Than One
- ✓ Private

























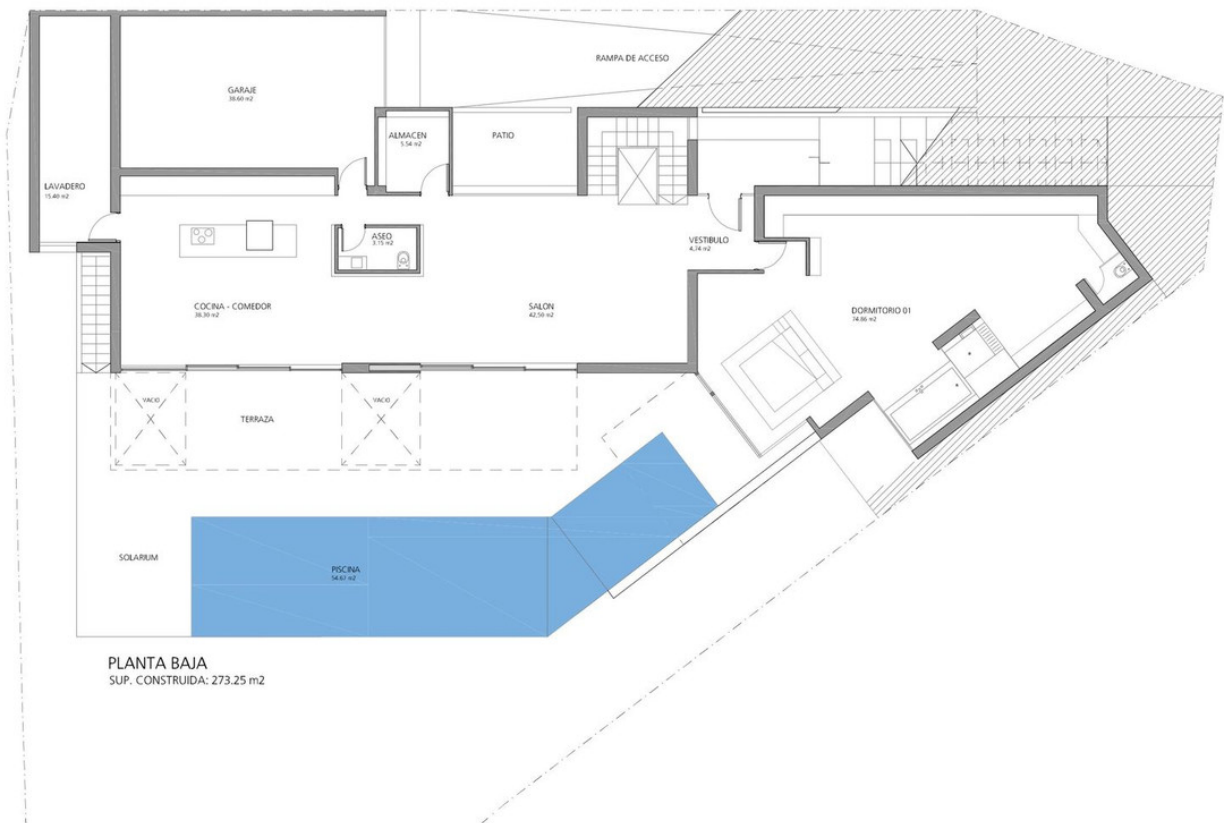


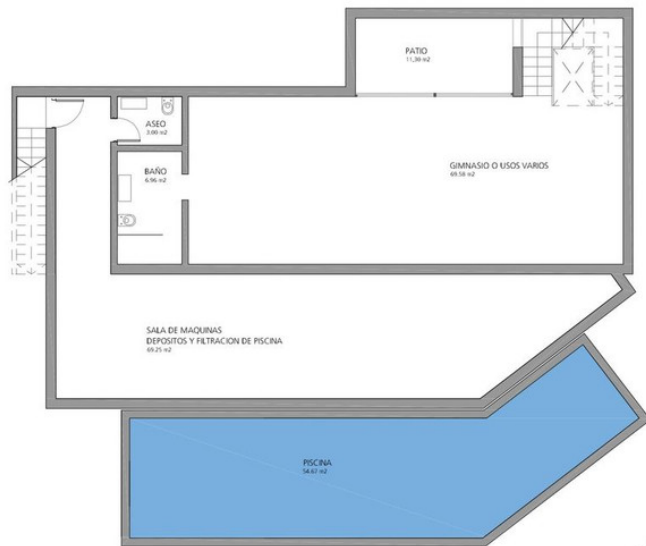




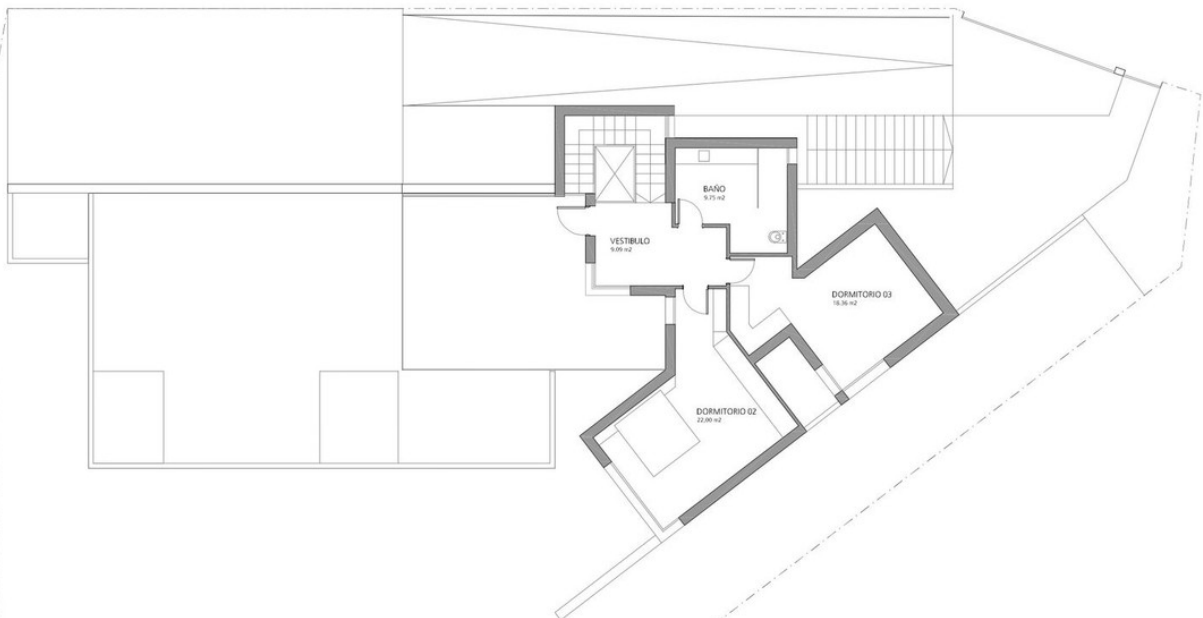








PLANTA SOTANO
SUP. CONSTRUIDA: 194.67 m²



PLANTA ALTA
SUP. CONSTRUIDA: 84.91 m²