

**Ref.-ID: MIBGR5048134**

**Benahavís**

**House**



**5**



**5.5**



**520 m2**



**1208 m2**

Exceptional New-Build Villa with Panoramic Sea Views – Ready This Summer Introducing a stunning luxury villa new to the market—offering 4 to 5 spacious bedrooms and 5.5 elegant bathrooms, this property is an outstanding opportunity in a prime elevated location with uninterrupted panoramic views of the sea and surrounding landscape. Thoughtfully designed across two floors and a basement, the layout maximizes natural light and captures the breathtaking vistas from every angle. The southeast-facing orientation ensures sun-filled mornings and bright interiors throughout the day. Highlights include: - Incredible Sea Views from expansive terraces - Heated Infinity Pool – Perfect for year-round enjoyment - Fully Fitted Oak Kitchen with high-end Miele appliances - Underfloor Heating throughout the home for ultimate comfort - Private Parking for Two Vehicles adjacent to the villa - Top-Quality Materials & Finishes selected for both style and durability And much more! Every detail of this home has been crafted to offer modern luxury and seamless indoor-outdoor living, making it ideal as a permanent residence, holiday home, or investment. This is a rare opportunity to own a brand-new, move-in-ready villa in one of the most desirable areas on the Costa del Sol. About Puerto del Capitán Puerto del Capitán is a sought-after gated residential community located in the hills of Benahavís, just a short drive from Marbella, San Pedro, and the famous Puerto Banús marina. Known for its tranquil surroundings, elevated views, and exclusive atmosphere, the area offers residents privacy, security, and convenience—all within reach of the Costa del Sol's best amenities. Set against a backdrop of rolling hills and the Mediterranean Sea, Puerto del Capitán combines natural beauty with modern living. The community features a collection of stylish villas, each with its own character and charm. With 24-hour security, well-maintained infrastructure, and proximity to top golf courses like Los Arqueros and La Quinta, it's a favorite among both permanent residents and international property investors. From here, you're just 10 minutes to Puerto Banús, surrounded by world-class golf courses, Close to beaches, restaurants, and schools and Moments from shopping, dining, and nightlife Puerto del Capitán offers the perfect blend of peaceful living and easy access to the vibrant lifestyle of the Costa del Sol.

**Setting**

- ✓ Close To Golf
- ✓ Close To Shops
- ✓ Close To Town

**Climate Control**

- ✓ Air Conditioning
- ✓ Central Heating

**Kitchen**

- ✓ Fully Fitted

**Category**

- ✓ Luxury
- ✓ Contemporary

**Orientation**

- ✓ South East

**Views**

- ✓ Sea
- ✓ Panoramic

**Garden**

- ✓ Easy Maintenance

**Condition**

- ✓ Excellent
- ✓ New Construction

**Features**

- ✓ Covered Terrace
- ✓ Fitted Wardrobes
- ✓ Near Transport
- ✓ Private Terrace
- ✓ WiFi
- ✓ Guest Apartment
- ✓ Ensuite Bathroom

**Security**

- ✓ Gated Complex

**Pool**

- ✓ Private
- ✓ Heated

**Furniture**

- ✓ Not Furnished

**Parking**

- ✓ Covered
- ✓ More Than One





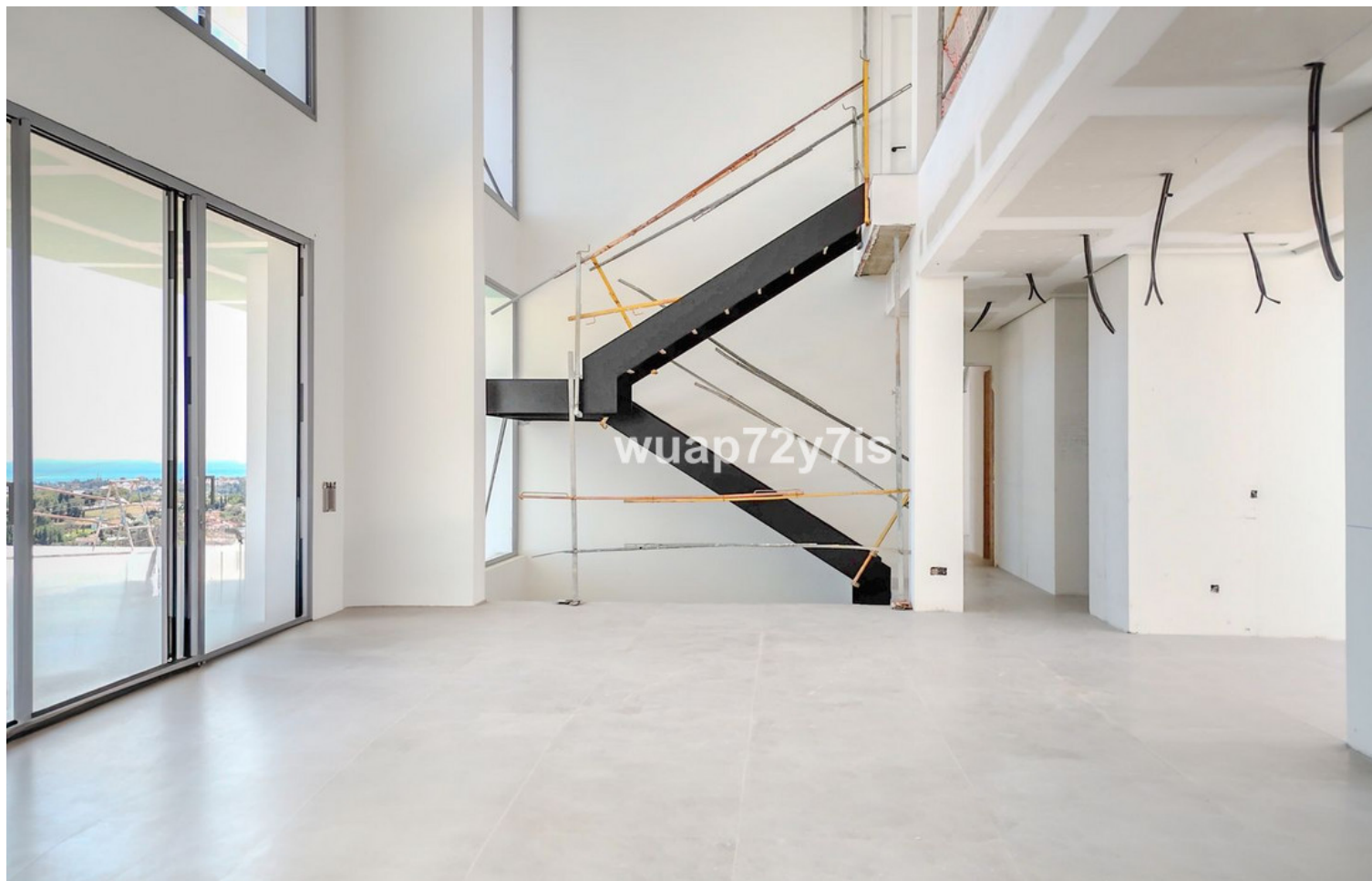
















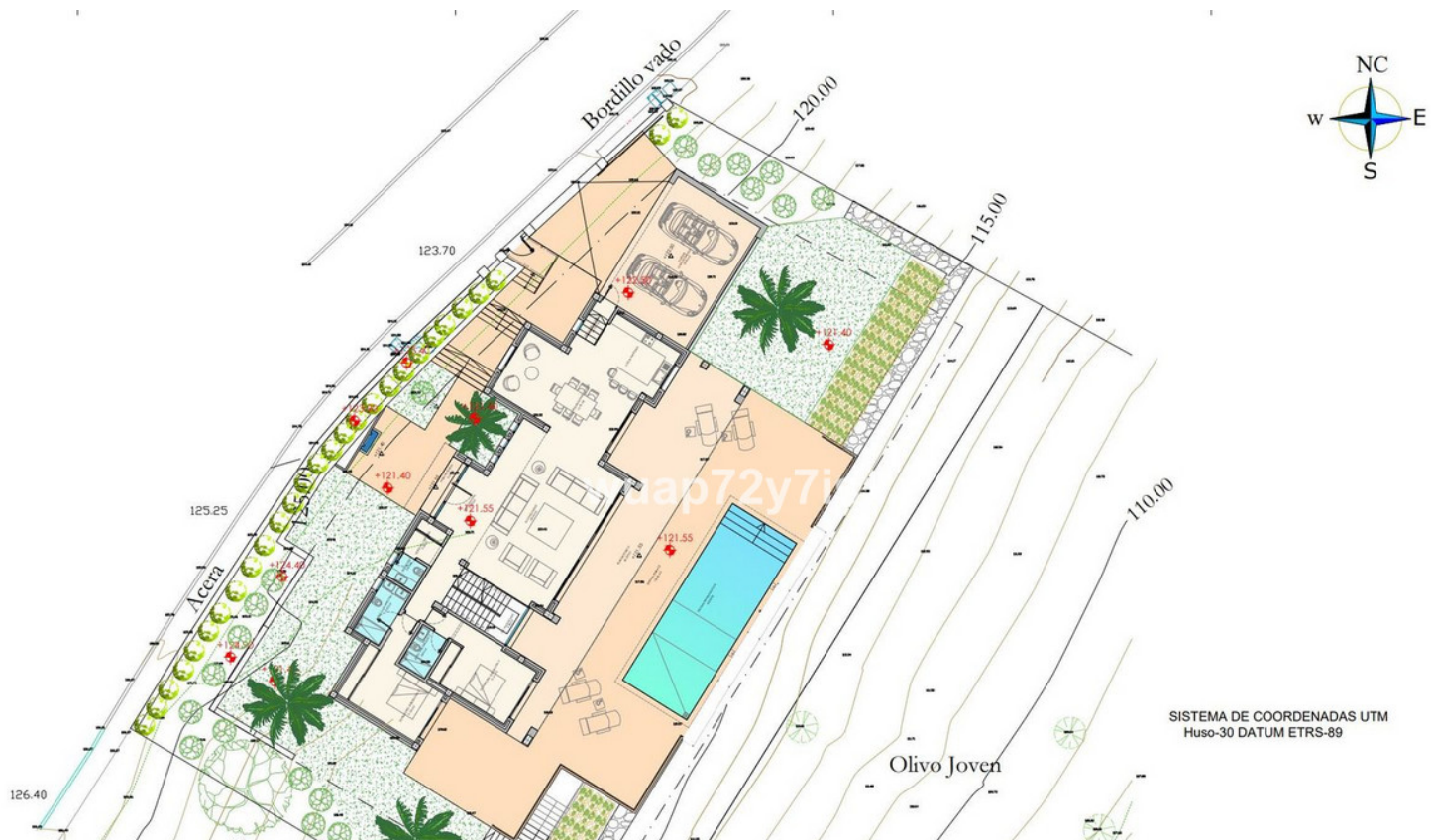




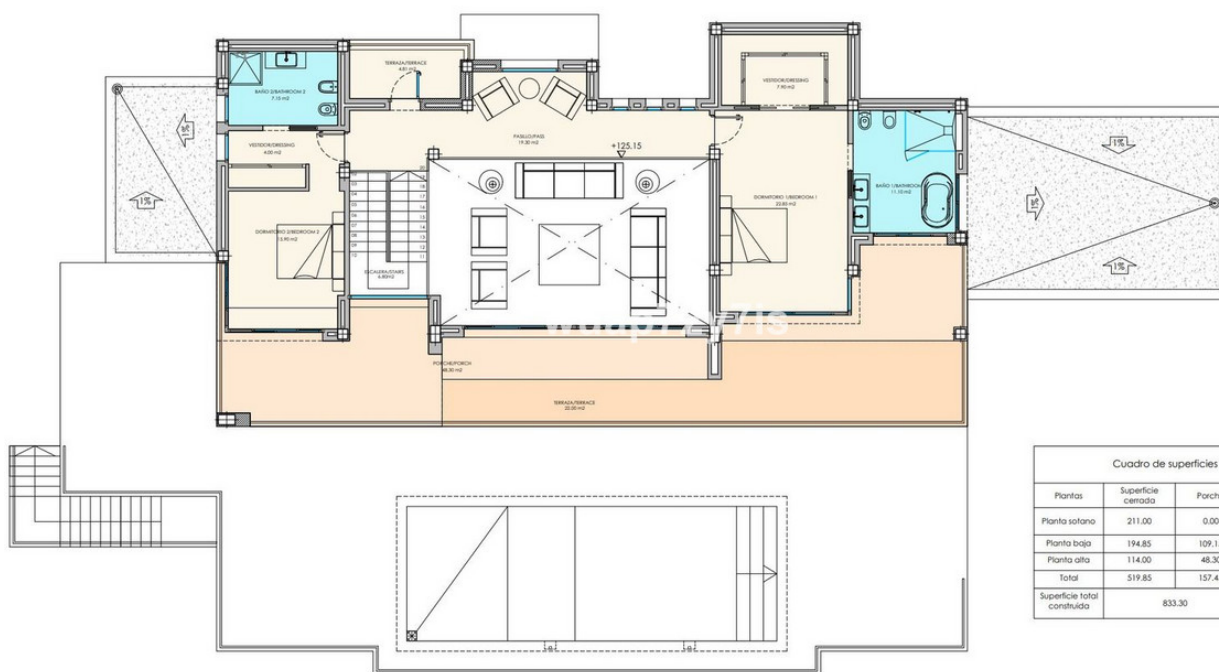








51: 1.208,00 m<sup>2</sup>



PLANTA ALTA  
114.00m<sup>2</sup>

Cuadro de superficies (m <sup>2</sup> )			
Plantas	Superficie cerrada	Parche	Terrazas
Planta sótano	211.00	0.00	0.00
Planta baja	194.85	109.15	134.00
Planta alta	114.00	48.30	22.00
Total	519.85	157.45	156.00
Superficie total construida	833.30		

Situación:  
Parcela 51. URB. El Capitán, Benahavís. (Málaga).

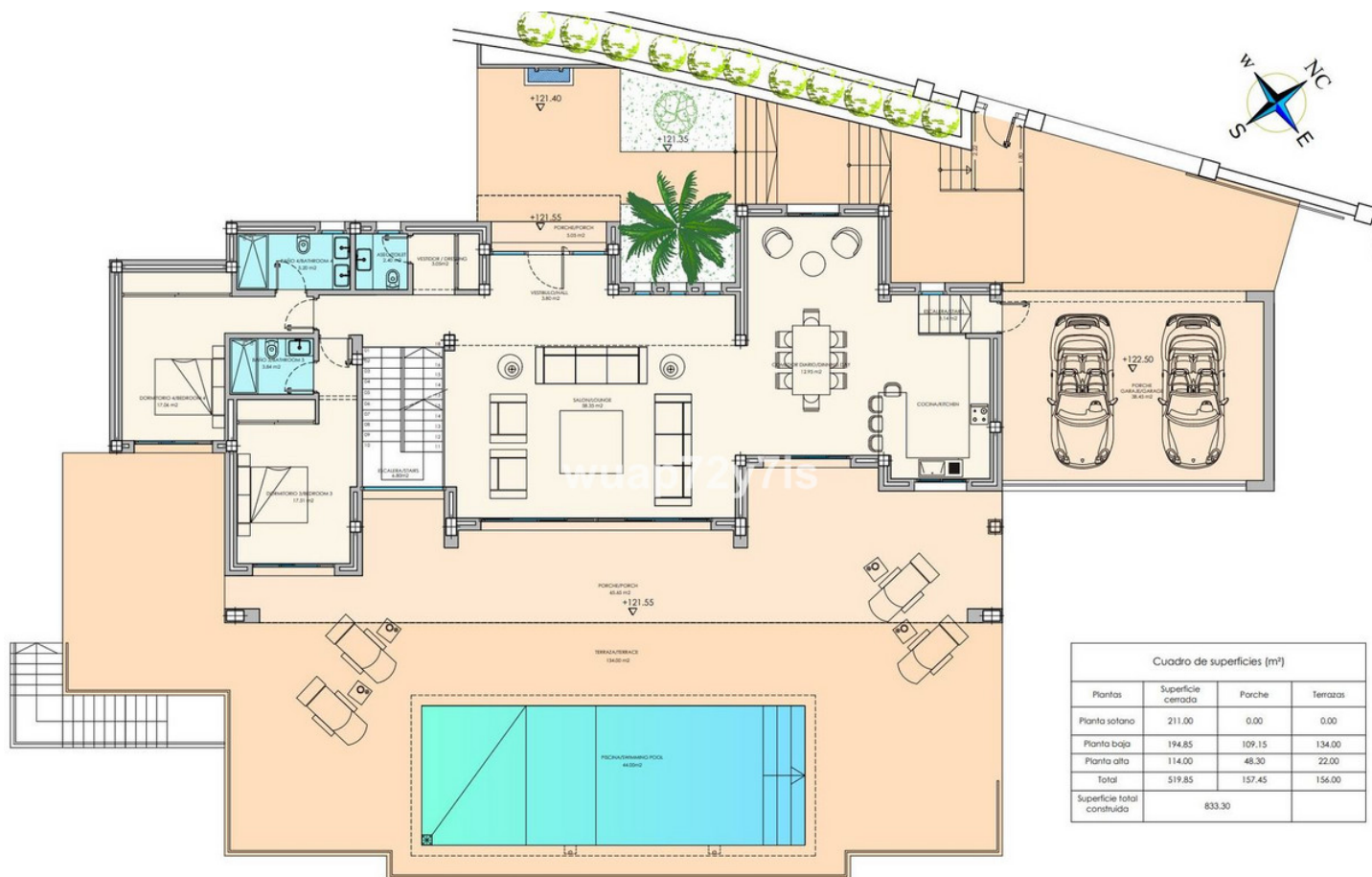
Descripción:  
Planta alta. Distribución y Amueblamiento

**roblesdíazararquitectos**  
málaga marbella ayamonte



Plan created: 5/2/2008 Málaga. www.roblesdiazarquitectos.com. Tel: +34 952 217146. Fax: +34 952 222461. info@roblesdiazarquitectos.com

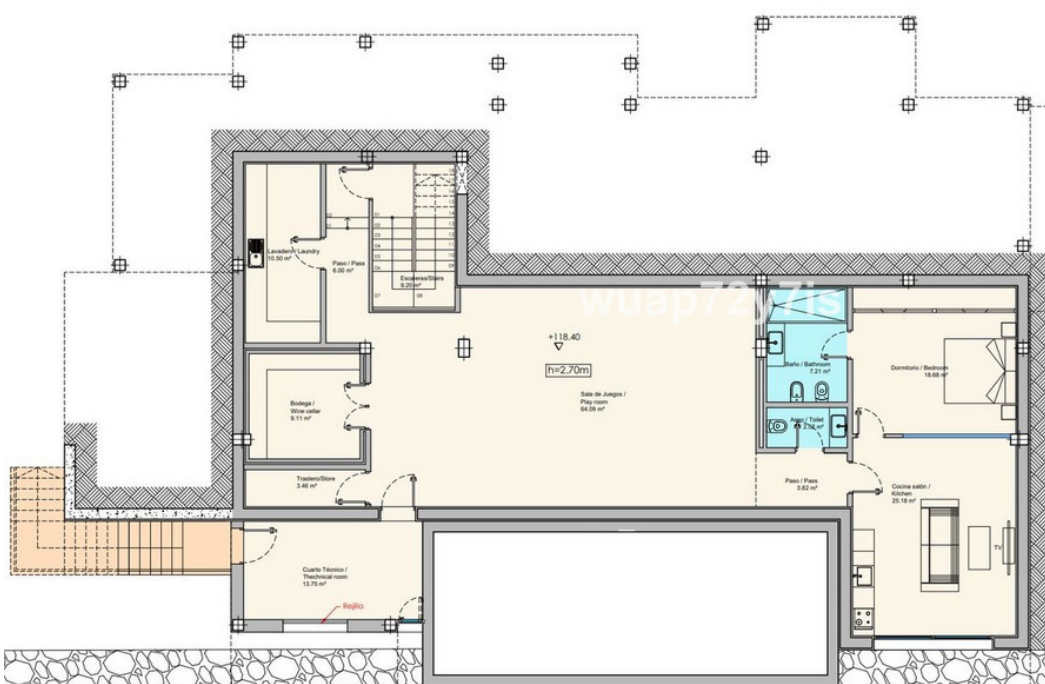




PLANTA BAJA  
194.85 m<sup>2</sup>

Cuadro de superficies (m <sup>2</sup> )			
Plantas	Superficie cerrada	Porche	Terrazas
Planta sótano	211.00	0.00	0.00
Planta baja	194.85	109.15	134.00
Planta alta	114.00	48.30	22.00
Total	519.85	157.45	156.00
Superficie total construida	833.30		

Situación:  
Parcela 51, URB. El Capitán, Benahavís. (Málaga).  
Descripción:



PLANTA SÓTANO  
211.00 m<sup>2</sup>

Cuadro de superficies (m <sup>2</sup> )			
Plantas	Superficie cerrada	Porche	Terrazas
Planta sótano	211.00	0.00	0.00
Planta baja	194.85	109.15	134.00
Planta alta	114.00	48.30	22.00
Total	519.85	157.45	156.00
Superficie total construida	833.30		

Situación:  
Parcela 51, URB. El Capitán, Benahavís. (Málaga).  
Descripción:  
Planta sótano. Distribución y Amueblamiento