

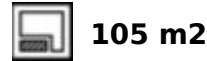
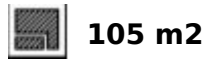
Ref.-ID: MIBGR5062999

Mijas

House

Community: 25,056 EUR / year IBI: 450 EUR / year

Rubbish: 120 EUR / year



Welcome to a charming townhouse set right on the golf course in Mijas, surrounded by nature, peace, and Andalusian charm. This beautifully maintained home offers a private garden with open green views, backing directly onto a well-kept golf area, ideal for morning coffee, afternoon barbecues, or relaxing after a round of golf. The property is distributed over two levels. Upstairs, you'll find two spacious en-suite bedrooms on opposite sides of the home, ensuring privacy for family or guests. On the main floor, a bright living room with a fireplace connects seamlessly to a modern, semi-open kitchen, with large doors leading out to your garden oasis. Every corner of the home enjoys views of greenery and tranquility. Perfect for golf enthusiasts and investors alike, this home is ideal for mid-term rentals (2-11 months), enjoy golfing part of the year and rent it out the rest. A smart combination of lifestyle and return. Highlights: - Located directly on the golf course - 5 minutes from the beach - Close to Fuengirola, La Cala & all amenities - Peaceful green surroundings - Move-in ready, no renovation needed A rare opportunity for golf lovers seeking comfort, charm, and investment potential, come and fall in love with this Mijas gem. Contact us today to schedule a viewing.

Setting

- ✓ Frontline Golf
- ✓ Close To Golf
- ✓ Close To Schools

Climate Control

- ✓ Air Conditioning
- ✓ Fireplace

Kitchen

- ✓ Fully Fitted

Category

- ✓ Golf
- ✓ Holiday Homes
- ✓ Investment

Orientation

- ✓ West

Views

- ✓ Mountain
- ✓ Golf
- ✓ Country
- ✓ Garden

Garden

- ✓ Communal
- ✓ Private

Condition

- ✓ Good

Features

- ✓ Fitted Wardrobes
- ✓ Near Transport
- ✓ Private Terrace
- ✓ Solarium
- ✓ Ensuite Bathroom
- ✓ Double Glazing

Security

- ✓ Gated Complex

Pool

- ✓ Communal

Furniture

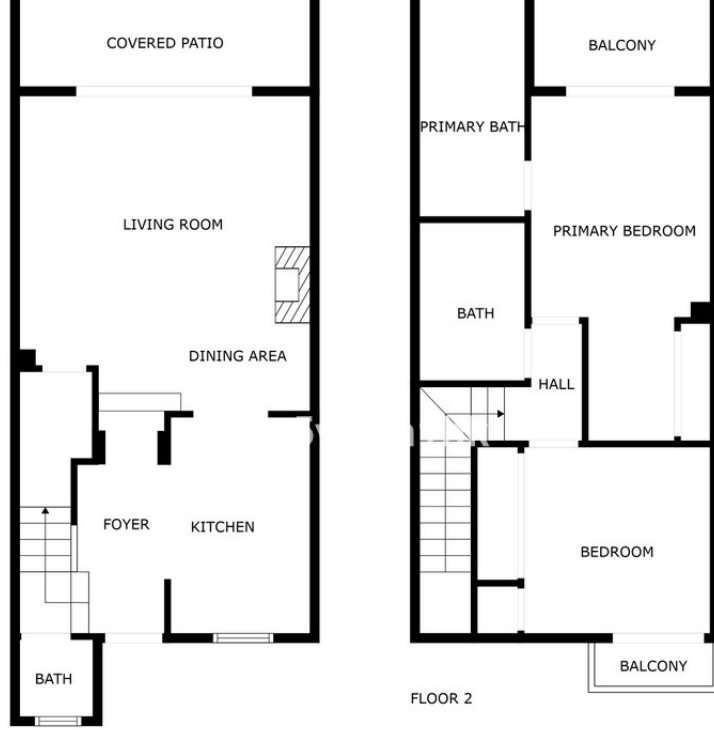
- ✓ Part Furnished

Parking

- ✓ Communal







FLOOR 1

FLOOR 2

SIZES ARE APPROXIMATE, ACTUAL MAY VARY.









6u5vbuh1hk



6u5vbuh1hk













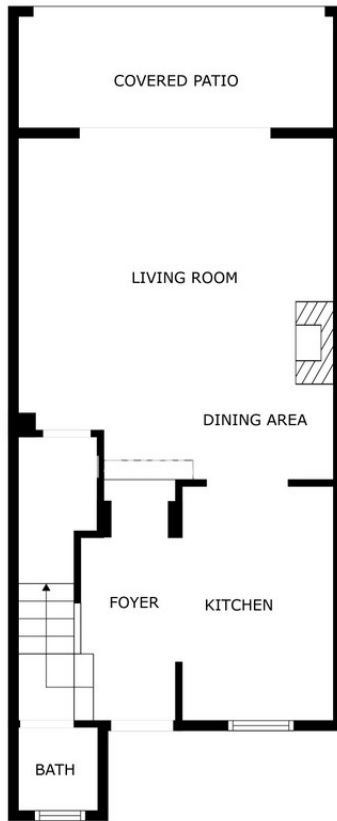






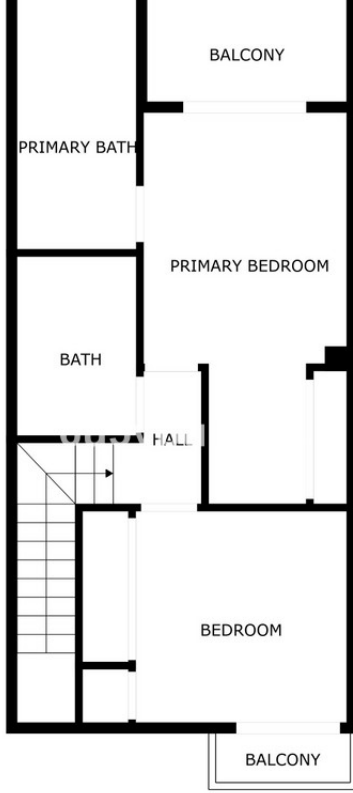




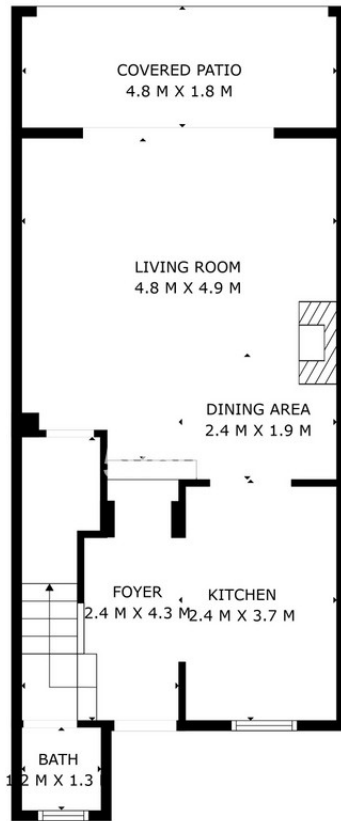


SIZES ARE APPROXIMATE, ACTUAL MAY VARY.



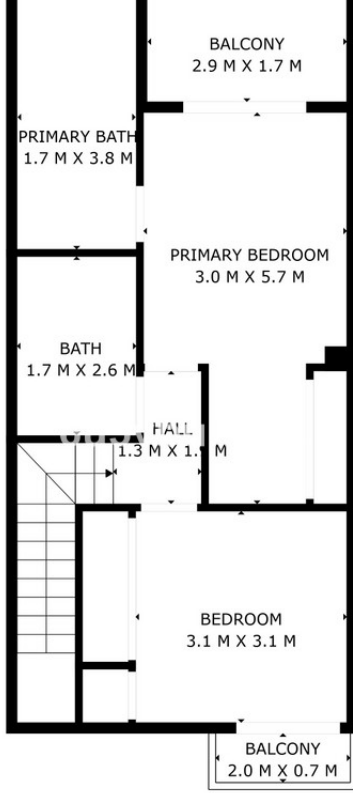


SIZES ARE APPROXIMATE, ACTUAL MAY VARY.

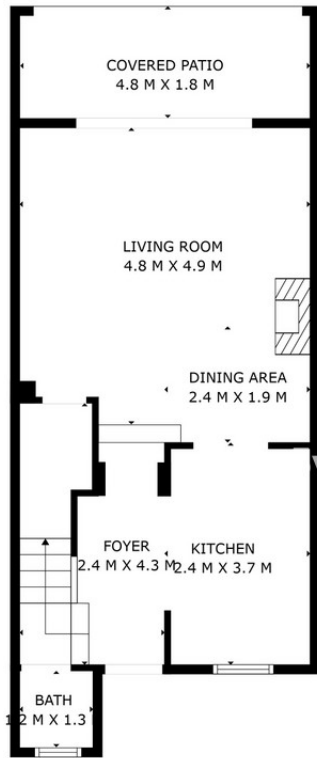


SIZES ARE APPROXIMATE, ACTUAL MAY VARY.

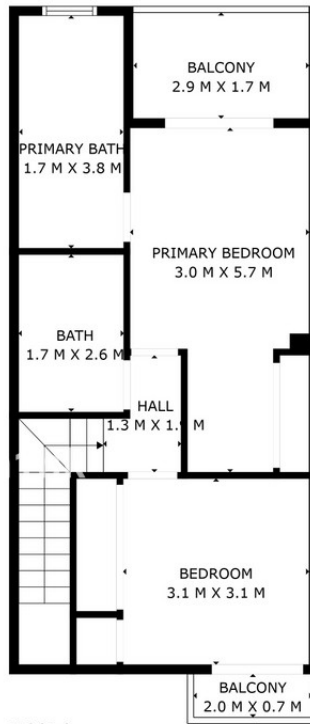




SIZES ARE APPROXIMATE, ACTUAL MAY VARY.



FLOOR 1



FLOOR 2

SIZES ARE APPROXIMATE, ACTUAL MAY VARY.

