

**Ref.-ID: MIBGR5109166**

**Fuengirola**

**House**



**5**



**6**



**312 m2**



**466 m2**

This stunning villa, perfectly positioned near the beach and Castillo Sohail, offers a unique blend of modern design, comfort, and breathtaking views. The entrance level welcomes you with a bright open floor plan, featuring a modern newly renovated kitchen, a spacious living area, a guest toilet, and a sun drenched terrace. A stylish bedroom on this level adds convenience and flexibility. On the second floor, three elegant bedrooms and three contemporary bathrooms provide a serene retreat. The master suite is a standout, boasting panoramic views of the sea, the castle, and Fuengirola, with direct access to a private terrace and an idyllic spot to enjoy the scenery. The lower level functions as an independent apartment with its own entrance, offering two sleeping areas, a fully equipped kitchen, and seamless access to the private pool. Ideal for guests, extended family, or rental income, this space adds exceptional versatility to the home. Designed for effortless enjoyment, the outdoor area is low maintenance and features a private pool and a brand-new sauna with a shower, your personal oasis for relaxation. With its unbeatable location, spectacular views, and flexible layout, this villa is a rare gem and perfect as a family home, a luxury vacation retreat, or a high return investment. Don't miss this opportunity to own a piece of paradise by the beach. Schedule your private viewing today!

#### **Setting**

- ✓ Beachside
- ✓ Close To Port
- ✓ Close To Shops
- ✓ Close To Town

#### **Pool**

- ✓ Private

#### **Climate Control**

- ✓ Air Conditioning

#### **Views**

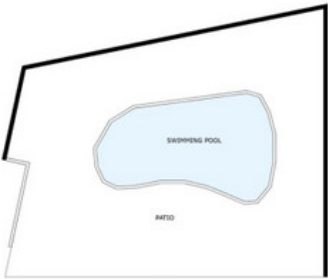
- ✓ Sea
- ✓ Mountain
- ✓ Garden
- ✓ Pool
- ✓ Urban

#### **Features**

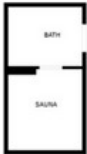
- ✓ Covered Terrace
- ✓ Fitted Wardrobes
- ✓ Near Transport
- ✓ Private Terrace
- ✓ Guest Apartment
- ✓ Guest House
- ✓ Ensuite Bathroom
- ✓ Barbeque
- ✓ Near Church
- ✓ Basement
- ✓ Fiber Optic

#### **Furniture**

- ✓ Fully Furnished



FLOOR 1



FLOOR 2



FLOOR 3

SIZES ARE APPROXIMATE, ACTUAL MAY VARY.













































































