

Ref.-ID: MIBGR5110600

Estepona

Apartment



2



2



102 m2

Modern Living on the New Golden Mile – 2-Bedroom Apartment with Large Private Terrace This stylish, ground-floor apartment is part of a cutting-edge residential complex in one of Estepona’s most desirable areas – the New Golden Mile. Designed with elegance and functionality in mind, the property offers a bright, open layout that seamlessly integrates indoor and outdoor living. Featuring 2 spacious bedrooms and 2 bathrooms, this home also includes a generous private terrace, perfect for enjoying the sun, al fresco dining, or entertaining. Surrounded by lush gardens and premium communal spaces, it brings together comfort, quality, and contemporary design. Set in a peaceful, secure environment with easy access to the beach, golf courses, restaurants, and all key amenities, this property stands out as an ideal permanent residence, holiday retreat, or investment opportunity. Estimated delivery by developer: 2026.

Setting

- ✓ Town
- ✓ Commercial Area
- ✓ Beachside
- ✓ Port
- ✓ Village
- ✓ Close To Port
- ✓ Close To Shops
- ✓ Close To Sea
- ✓ Close To Town
- ✓ Close To Schools
- ✓ Urbanisation

Features

- ✓ Covered Terrace
- ✓ Near Transport
- ✓ Private Terrace
- ✓ Gym
- ✓ Jacuzzi

Parking

- ✓ Garage

Condition

- ✓ New Construction

Furniture

- ✓ Fully Furnished

Category

- ✓ Holiday Homes
- ✓ Luxury

Pool

- ✓ Communal
- ✓ Indoor

Kitchen

- ✓ Fully Fitted

Views

- ✓ Sea
- ✓ Mountain
- ✓ Port
- ✓ Country

Garden

- ✓ Communal
- ✓ Private















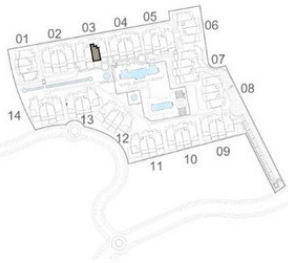






2 Bed First Floor Apartment

Site Plan

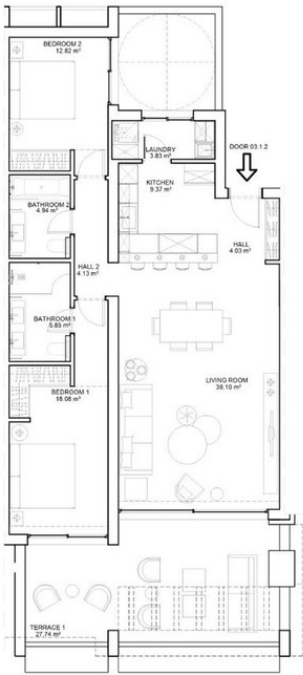


Block 03

Solarium		Solarium	
03.2.2	03.1.3	03.2.1	03.1.1
03.1.4	03.1.2	03.0.2	03.0.1
03.0.4	03.0.3		

Apartment 03.1.2 - 2 Bedroom

Indoor Usable Area	101.15 m ²
Terrace Usable Area	27.74 m ²
Total Usable Area	128.89 m²
Indoor Constructed Area	118.34 m ²
Terrace Constructed Area	31.69 m ²
Total Constructed Area	150.03 m²



E: 1/100

This document is for information only. The areas and measurements shown are approximate and may be modified for technical reasons and/or administrative issues. All furniture shown is for illustrative purposes.