



**Sales - Apartment - Estepona
970.000€**

**www.mibgroup.es
+34 662 58 96 58
info@mibgroup.es**

Community: 4,272 EUR / year IBI: 732 EUR / year

Rubbish: 148 EUR / year



2



2



105 m2

Modern-style apartment located on the beachfront, offering stunning sea views and the chance to enjoy spectacular sunrises. Set within the magnificent Horizon Beach development, built by the prestigious developer Taylor Wimpey, it stands out for its contemporary design and high-quality finishes. The beautifully maintained community features direct access to the beach, landscaped gardens, and a heated outdoor pool—ideal for year-round enjoyment. In addition, it offers communal areas with showers, sun loungers, and a spacious covered terrace perfect for relaxing. Just a 5-minute drive from both the center of Estepona and La Duquesa Marina, with all amenities close at hand. Includes a convenient underground parking space and a large storage room located directly opposite the parking bay. A fantastic beachfront opportunity that's truly worth visiting!

Setting

- ✓ Beachfront
- ✓ Beachside
- ✓ Close To Port
- ✓ Close To Shops
- ✓ Close To Sea
- ✓ Close To Town
- ✓ Close To Schools
- ✓ Close To Marina
- ✓ Urbanisation
- ✓ Front Line Beach Complex

Climate Control

- ✓ Air Conditioning
- ✓ Hot A/C
- ✓ Cold A/C
- ✓ Central Heating

Kitchen

- ✓ Fully Fitted

Utilities

- ✓ Electricity
- ✓ Drinkable Water
- ✓ Telephone

Orientation

- ✓ South West

Views

- ✓ Sea
- ✓ Mountain
- ✓ Beach
- ✓ Country
- ✓ Panoramic
- ✓ Garden
- ✓ Pool

Garden

- ✓ Communal
- ✓ Easy Maintenance

Category

- ✓ Beachfront
- ✓ Resale

Condition

- ✓ Excellent

Features

- ✓ Covered Terrace
- ✓ Lift
- ✓ Fitted Wardrobes
- ✓ Near Transport
- ✓ Private Terrace
- ✓ Satellite TV
- ✓ WiFi
- ✓ Storage Room
- ✓ Ensuite Bathroom
- ✓ Access for people with reduced mobility
- ✓ Marble Flooring
- ✓ Barbeque
- ✓ Double Glazing
- ✓ Fiber Optic

Security

- ✓ Gated Complex
- ✓ Electric Blinds
- ✓ Entry Phone
- ✓ Alarm System

Pool

- ✓ Communal
- ✓ Heated

Furniture

- ✓ Optional

Parking

- ✓ Underground
- ✓ Open
- ✓ Communal
- ✓ Private



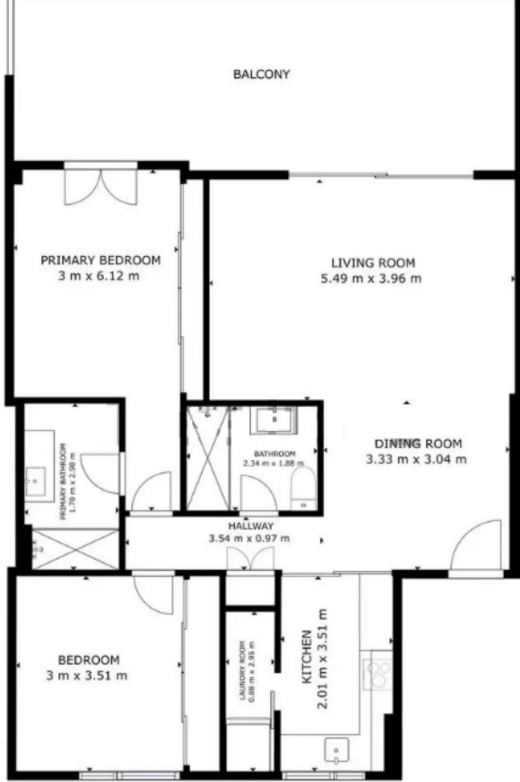












GROSS INTERNAL AREA
 FLOOR 1: 87.13 m²
 EXCLUDED AREAS; BALCONY: 27.39 m²
 TOTAL: 87.13 m²
 SIZES AND DIMENSIONS ARE APPROXIMATE, ACTUAL MAY VARY.





































